

Installation & CARE

2010-2012 VERSION HYUNDAI GENESIS COUPE TAIL LIGHTS INSTALLATION INSTRUCTIONS

BEFORE INSTALLATION:

- If you experience any difficulties that the instructions did not cover, please seek assistance at local a automotive shop.
- Please wear protection before you work on any vehicle.
- An assistant is useful when removing the front bumper from your vehicle.
- Please be cautions when working with the bumper or any parts belonging to the vehicles's body to prevent scratching.
- Do not make direct contact with the halogen bulbs or the wire assembly until the unit has cooled down after use.

TOOLS AND SUPPLIES REQUIRED

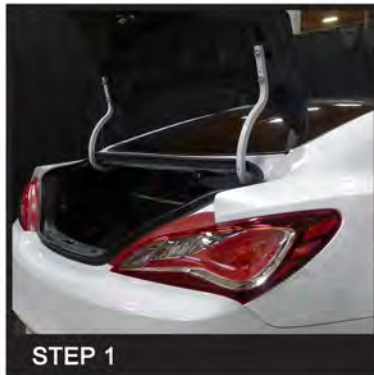
¼" Ratchet	8 mm Deep Socket	10 mm Deep Socket
		

PRODUCT NUMBER

LT-GENS210RLED-TM
 LT-GENS210RGLED-TM
 LT-GENS210JMLED-TM
 LT-GENS210BKLED-TM
 LT-GENS210GLED-TM



LET'S START THE INSTALLATION



STEP 1

Open the trunk



STEP 2

Remove the tail light cover inside the trunk



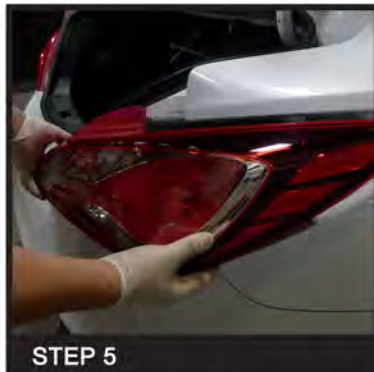
STEP 3

Disconnect the tail light harness



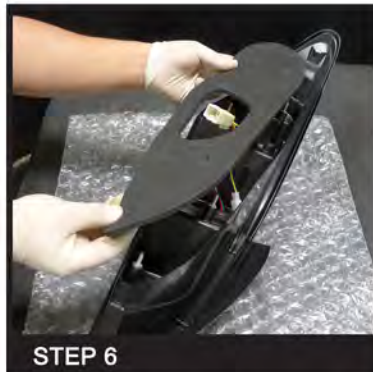
STEP 4

Remove the 4 mounting nuts.
 For 2010-12 models: 8mm nuts
 For 2013-15 models: 10mm nuts



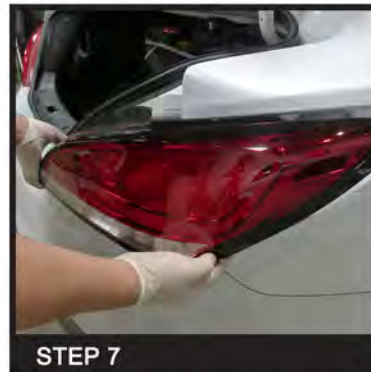
STEP 5

Remove the factory tail light housing



STEP 6

Install the tail light gasket



STEP 7

Install the new tail light housing



STEP 8

Fasten the 4 mounting nuts. 2010-12 models 8mm nuts and 2013-15 models 10mm nuts.



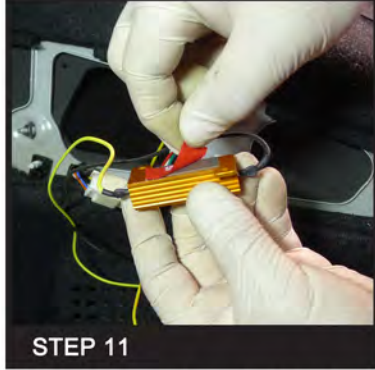
STEP 9

Connect the tail light harness



STEP 10

Connect the resistor



STEP 11

Remove the double sided tape film on the resistor



STEP 12

Set the resistor on the metal area



STEP 13

Install the tail light cover



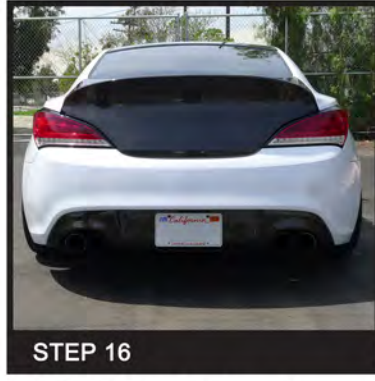
STEP 14

Please repeat the steps from 2 to 13 for the opposite side



STEP 15

Close the trunk and complete



STEP 16

The installation is now complete