





Installation & CARE

2008-2016 FORD F250 LED TAILLIGHTS INSTALLATION

BEFORE INSTALLATION

- If you experience any difficulties that the instruction did not cover, please seek assistance at local automotive shop.
- Please wear protection before you work on any vehicle.
- An assistant is useful when removing the front bumper from your vehicle.
- Please be cautious when working with the bumper or any parts belonging to the vehicles's body to prevent scratching.
- Do not make direct contact with the halogen bulbs or the wire assembly until the unit has cooled down after use.

TOOLS AND SUPPLIES REQUIRED

1/4" Ratchet	Plastic prying	8 mm socket	Razor blade
			

PRODUCT NUMBER

LT-F25008JMLED-TM
 LT-F25008RLED-TM
 LT-F25008CLED-TM
 LT-F25008GLED-TM



LET'S START THE INSTALLATIONS



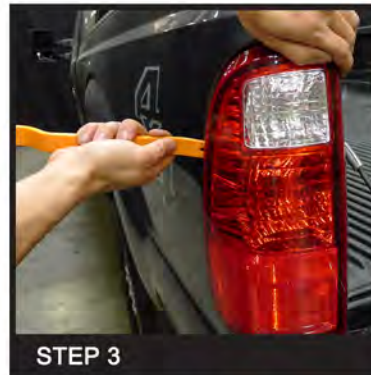
STEP 1

Lower the trunk



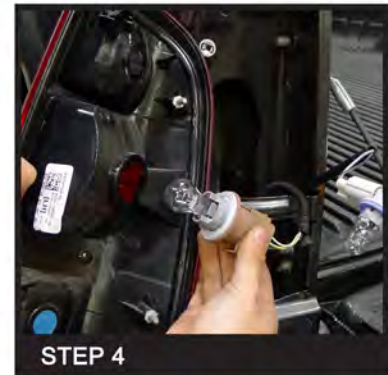
STEP 2

Remove (2) 8mm bolts



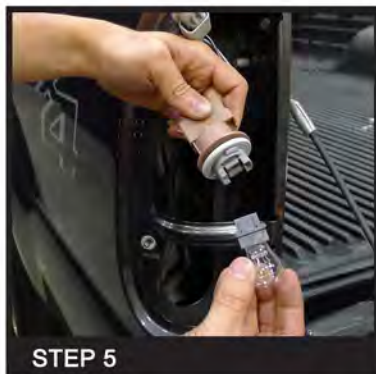
STEP 3

Remove the tail light housing



STEP 4

Disconnect the bulb sockets



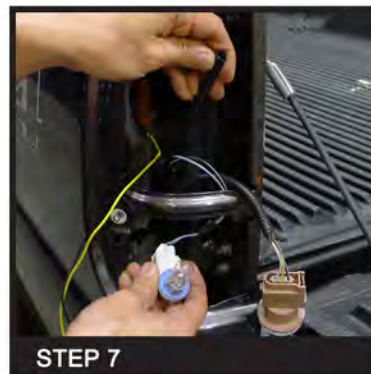
STEP 5

Disconnect bulb from main socket



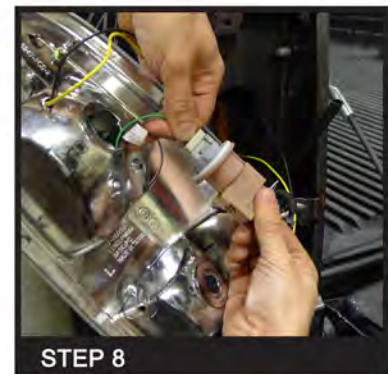
STEP 6

Attach the resistor to cleaned metal part of chassis



STEP 7

Undo tape for the reverse bulb in order to give slack to wiring. Connect the tail-light harness



STEP 8

Attach the LED connector to the bulb socket - black wire should match the Black-white wire



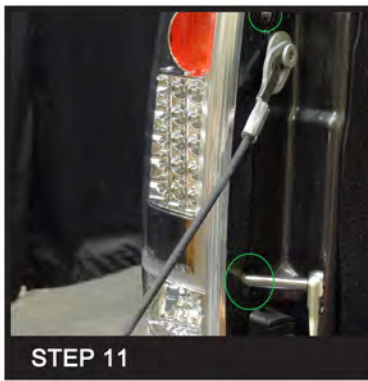
STEP 9

Secure all the bulb sockets to the tail light



STEP 10

Install the tail light housing



STEP 11

Remove (2) 8mm bolts



STEP 12

Close the trunk



STEP 13

Please repeat the steps from 2 to 11 for the opposite side



The installation is now complete