

# Installation & CARE

## 2015 AND UP FORD F150 LED TAILLIGHTS INSTALLATION

### BEFORE INSTALLATION

- If you experience any difficulties that the instruction did not cover, please seek assistance at local automotive shop.
- Please wear protection before you work on any vehicle.
- Please be cautious when working with the bumper or any parts belonging to the vehicles's body to prevent scratching.
- Do not make direct contact with the halogen bulbs or the wire assembly until the unit has cooled down after use.

### TOOLS AND SUPPLIES REQUIRED

1/4" Ratchet	Plastic Pry bar	8 mm socket	
			

### PRODUCT NUMBER

LT-F15015BBLED-TM  
 LT-F15015CLED-TM  
 LT-F15015GLED-TM  
 LT-F15015JMLED-TM  
 LT-F15015RLED-TM  
 LT-F15015RGLED-TM

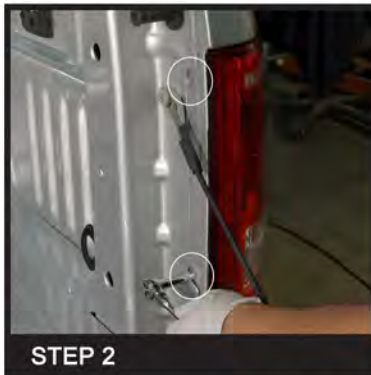


### LET'S START THE INSTALLATIONS



**STEP 1**

Lower trunk



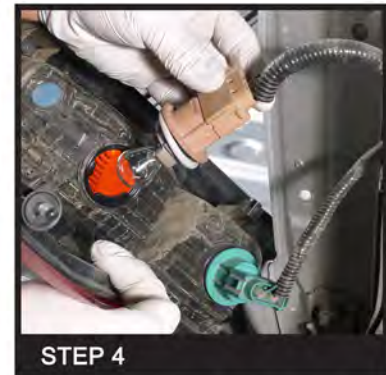
**STEP 2**

Locate and remove two 8mm bolts



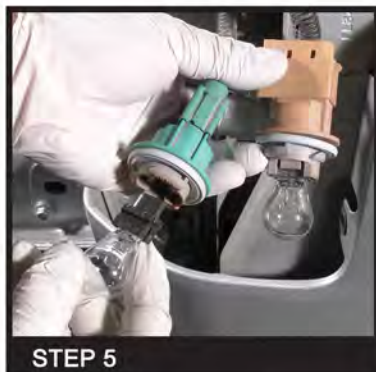
**STEP 3**

Remove tail light



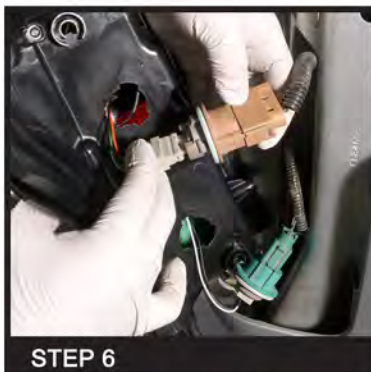
**STEP 4**

Disconnect bulb sockets from tail light



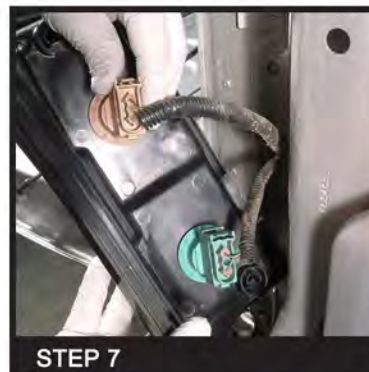
**STEP 5**

Remove bulb from sockets



**STEP 6**

Connect LED Harnesses to bulb sockets



**STEP 7**

Reinstall bulb sockets



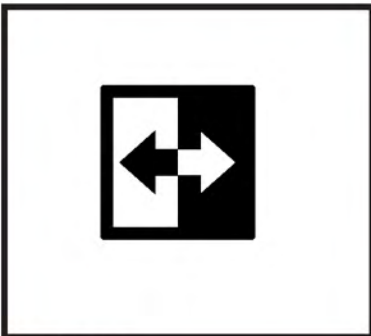
**STEP 8**

Install tail light housing



**STEP 9**

Reinstall two 10mm bolts and close trunk



**STEP 10**

Please repeat the steps from 2 to 9 for the opposite side



The installation is now complete

