

Installation & CARE

1998-2001 MERCEDES-BENZ M-CLASS W163 LED TAIL LIGHTS INSTALLATION INSTRUCTIONS

BEFORE INSTALLATION:

- If you experience any difficulties that the instructions did not cover, please seek assistance at a local automotive shop.
- Please wear proper protective equipment before you work on any vehicle.
- An assistant is recommended when removing the front bumper from your vehicle.
- Please be cautious when working with the bumper or any parts belonging to the vehicle's body to prevent scratching.
- Do not make direct contact with the halogen bulbs or the wire assembly until the unit has cooled down after use.

TOOLS AND SUPPLIES REQUIRED

1/4" Ratchet	8 mm socket	Plastic Pry bar
		

PRODUCT NUMBER

LT-BW16398GLED-TM
 LT-BW16398RLED-TM
 LT-BW16398RGLED-TM

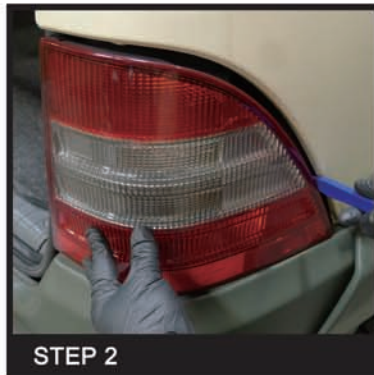


LET'S START THE INSTALLATION



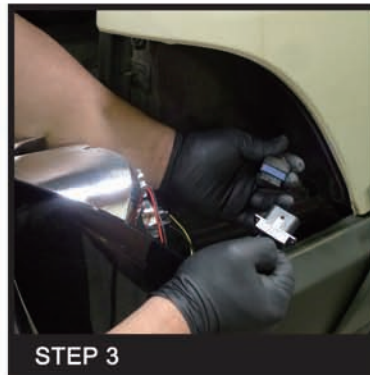
STEP 1

Remove the two 8mm tail light mounting nuts



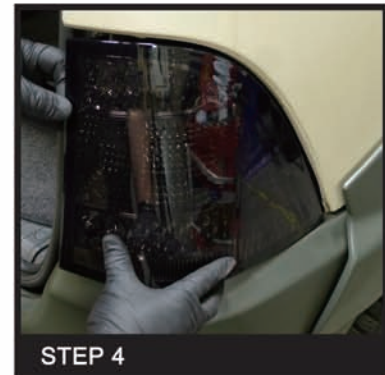
STEP 2

Disconnect the tail light harness and remove the factory tail light housing



STEP 3

Connect the tail light harness



STEP 4

Seat the new tail light assembly in place



STEP 5

Reinstall the two 8mm tail light mounting nuts



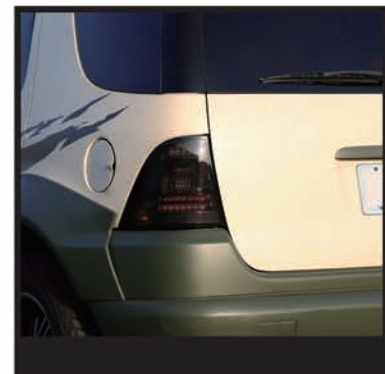
STEP 6

Please repeat the steps from 1 to 5 for the opposite side



STEP 7

Close the trunk to complete installation



Installation & CARE

SPEC-D
Tuning

INNOVATE PROFESSIONAL SERVICE

1998-2001 MERCEDES-BENZ M-CLASS W163 LED TAIL LIGHTS INSTALLATION INSTRUCTIONS

BEFORE INSTALLATION:

- If you experience any difficulties that the instructions did not cover, please seek assistance at a local automotive shop.
- Please wear proper protective equipment before you work on any vehicle.
- An assistant is recommended when removing the front bumper from your vehicle.
- Please be cautious when working with the bumper or any parts belonging to the vehicle's body to prevent scratching.
- Do not make direct contact with the halogen bulbs or the wire assembly until the unit has cooled down after use.

1998-2001 MERCEDES-BENZ M-CLASS W163 LED TAIL LIGHTS INSTALLATION INSTRUCTIONS

