

SPEC-D *Tuning*

1998-2000 FORD RANGER PROJECTOR HEADLIGHTS INSTALLATION INSTRUCTIONS

If you experience any difficulties that the instruction did not cover, Please seek assistance at a local automotive shop

Please wear protection before you work on any vehicle.



An assistant is useful when removing the front bumper from your vehicle.

Please be cautious when working with the bumper or any parts belonging to the vehicle's body to prevent scratching.

Do not make direct contact with the halogen bulbs or the wire assembly until the unit has cooled down after use.

TOOLS AND SUPPLIES REQUIRED

¼" Drive Ratchet

6" Extension

¼" Socket

Needle Nose Pliers

If your Headlight is Halo type, you also need:

Wire Crimper

4 Blue Quick Splice Wire Connectors

4 Blue Male Quick Wire Connectors

4 Blue Female Quick Wire Connectors

2 Red Wires (8 inch)

2 Black Wires (8 inch)

Product Part Numbers:

LHP-RAN98-RS

LHP-RAN98JM-RS

LHP-RAN98G-RS



1998-2000 FORD RANGER PROJECTOR HEADLIGHTS INSTALLATION INSTRUCTIONS

If you experience any difficulties that the instruction did not cover, Please seek assistance at a local automotive shop

Please wear protection before you work on any vehicle.



An assistant is useful when removing the front bumper from your vehicle.

Please be cautious when working with the bumper or any parts belonging to the vehicle's body to prevent scratching.

Do not make direct contact with the halogen bulbs or the wire assembly until the unit has cooled down after use.



1. (2) .25 in. screws location



2. Remove the (2) .25 in. screws



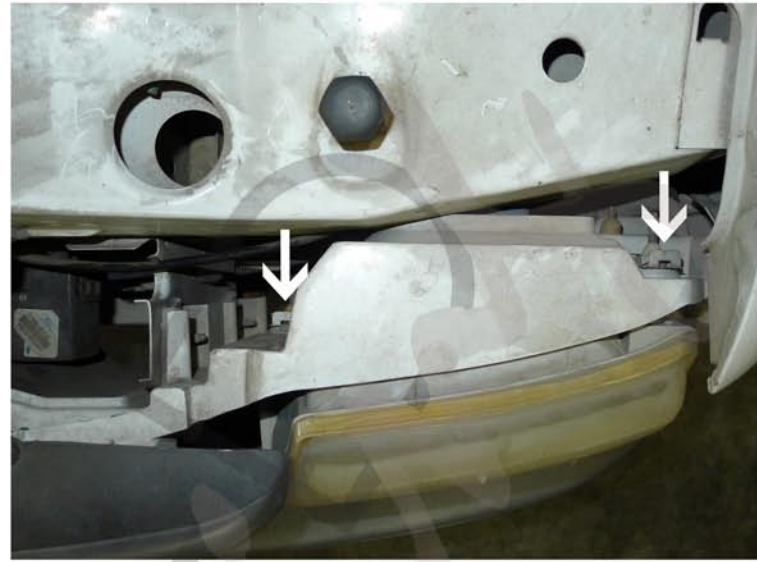
3. Remove the corner-bumper light



4. Disconnect the light sockets



5. Disconnect the light sockets



6. (2) Retainer clips location



7. Remove the (2) retainer clips



8. Remove the (2) retainer clips



9. Remove the stock headlight



10. Unplug the headlight bulb



11. Connect the headlight harness to the projector headlight
Please see the " L. E. D. tail lights installation instructions"
If your tail lights don't have L. E. D. You can skip the installation instructions.



12. Place the projector headlight in the stock location



13. Replace the (2) retainer clips



14. Replace the light sockets into the bumper light



15. Replace the corner-bumper light in the original location



16. Tighten the (2) .25 in. screws



17. Tighten the (2) .25 in screws



18. Please repeat the steps in order from 1 to 18 for the opposite side



19. The installation is now complete