

SPEC-D *Tuning*

1998-2005 LEXUS GS300/GS400 PROJECTOR HEADLIGHTS INSTALLATION INSTRUCTIONS

*If you experience any difficulties that the instructions did not cover, Please seek assistance at local automotive shop.

*Please wear protection before you work on your vehicle.

*An assistant is useful when removing the front bumper from your vehicle.

*Please be cautious when working with the bumper or any parts belonging to the vehicles' body prevent scratching.

*Do not make direct contact with the halogen bulb or the wire assembly until the unit has cooled down after use.



TOOLS AND SUPPLIES REQUIRED

¼" Drive Ratchet

10mm Socket

6" Extension

Product Part Numbers:

LHP-GS30098-RS

LHP-GS30098JM-RS



LEXUS GS300/GS400 PROJECTOR HEADLIGHTS INSTALLATION INSTRUCTIONS

If you experience any difficulties that the instruction did not cover, Please seek assistance at a local automotive shop

Please wear protection before you work on any vehicle.



An assistant is useful when removing the front bumper from your vehicle.

Please be cautious when working with the bumper or any parts belonging to the vehicle's body to prevent scratching.

Do not make direct contact with the halogen bulbs or the wire assembly until the unit has cooled down after use.



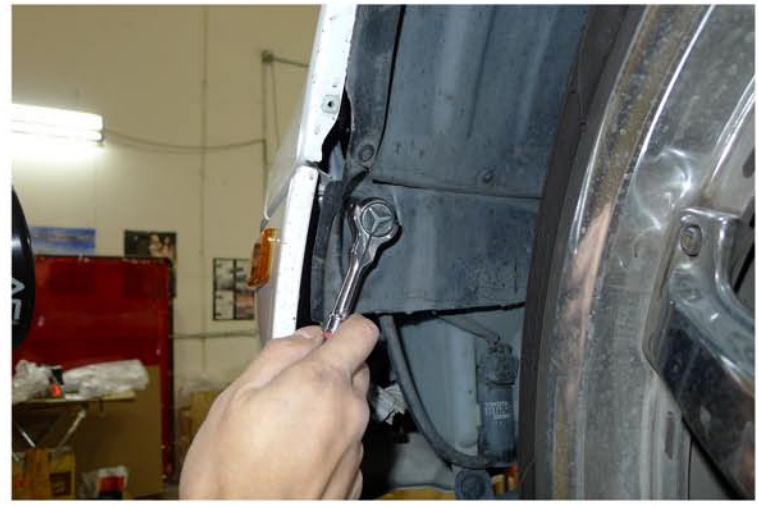
1. (10) 10mm bolt locations



2. Remove the 10mm screw



3. Disconnect the bumper light socket



4. Remove the 10mm screw



5. Remove the 10mm nut



6. Remove the (2) 10mm bolts



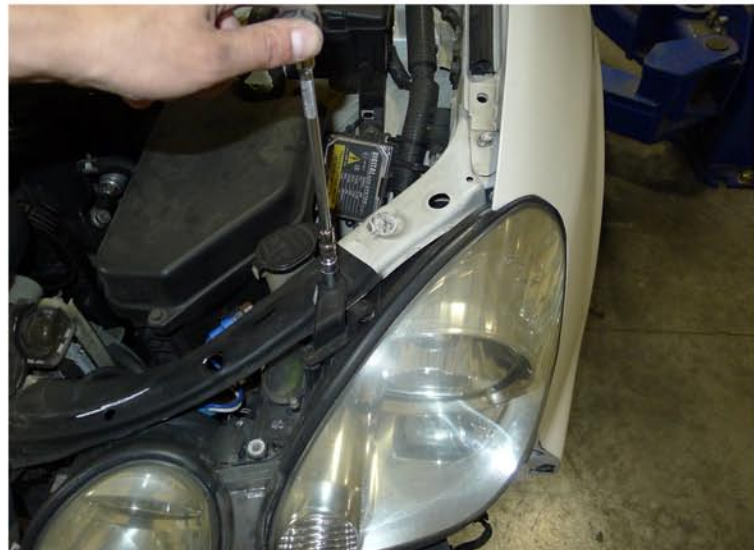
7. Remove the (2) 10mm bolts



8. Remove the front bumper



11. Remove the 10mm bolt



12. Remove the 10mm bolt



11. Remove the 10mm bolt



12. Remove the headlight



13. Disconnect the headlight harness



14. Disconnect the headlight harness



15. Disconnect the headlight harness



16. Connect the headlight harness to the new headlight



17. Remove the 10mm bolt



18. Remove the headlight



19. Disconnect the headlight harness



20. Disconnect the headlight harness



21. Disconnect the headlight harness



22. Connect the headlight harness to the new headlight



23. Connect the headlight harness to the new headlight



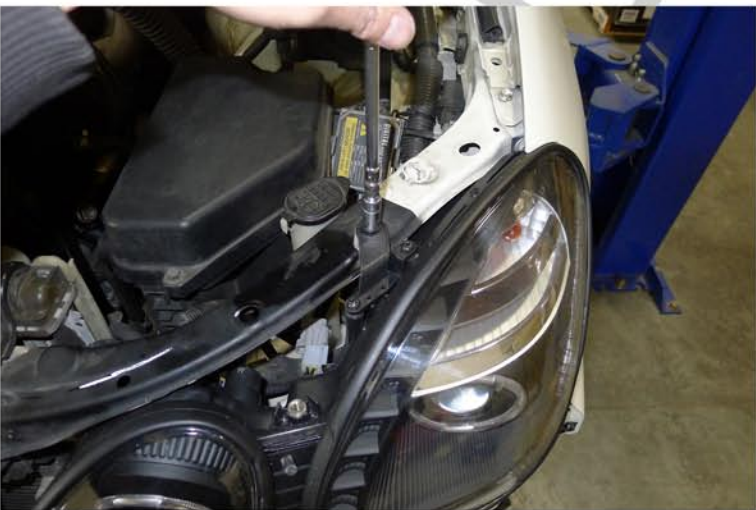
24. Connect the headlight harness to the new headlight



25. Tighten the (3) 10mm bolts



26. Tighten the (3) 10mm bolts



27. Tighten the (3) 10mm bolts



28. Replace the front bumper



29. Tighten the (2) 10mm bolts



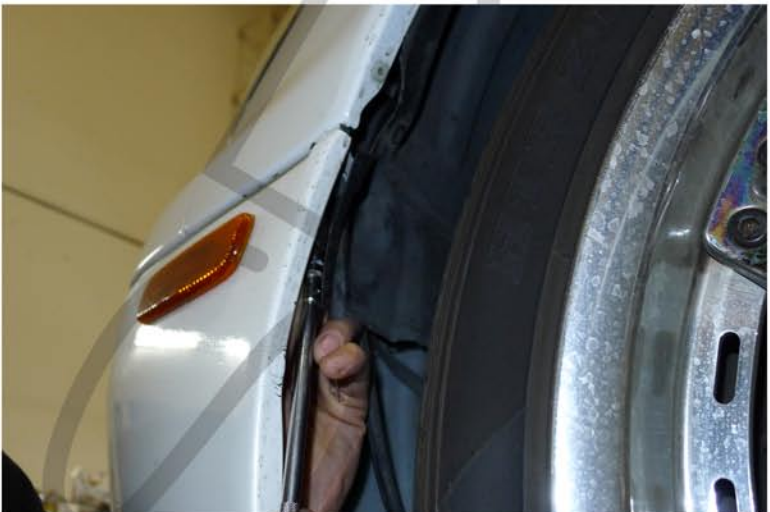
30. Tighten the (2) 10mm bolts



31. Tighten the 10mm nut



32. Tighten the 10mm screw



33. Tighten the 10mm screw



34. Connect the bumper light socket



35. Please repeat the steps in order from 1 to 34 for the opposite side. The installation is now complete