

Installation & CARE

2010 CHEVY CAMARO PROJECTOR HEADLIGHTS INSTALLATION INSTRUCTIONS

BEFORE INSTALLATION:

- If you experience any difficulties that the instructions did not cover, please seek assistance at local a automotive shop.
- Please wear protection before you work on any vehicle.
- An assistant is useful when removing the front bumper from your vehicle.
- Please be cautions when working with the bumper or any parts belonging to the vehicles's body to prevent scratching.
- Do not make direct contact with the halogen bulbs or the wire assembly until the unit has cooled down after use.

TOOLS AND SUPPLIES REQUIRED

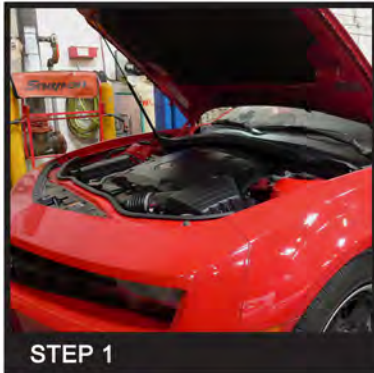
1/4" Ratchet	Plastic Fastener Remover	10 mm Socket	7 mm Socket
			
10 mm Flex Socket	ST20 Torx Bit Socket	6" Extension	12" Extension
			
Pocket Flat Head Screwdriver			
			

PRODUCT NUMBER

LHP-CMR10-TM
LHP-CMR10JM-TM
LHP-CMR10G-TM



LET'S START THE INSTALLATION



STEP 1

Raise the hood



STEP 2

Remove the six plastic fastener clips and two 10mm bolts



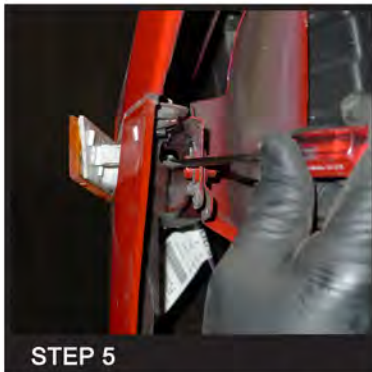
STEP 3

Remove the two 10mm bolts under the front bumper



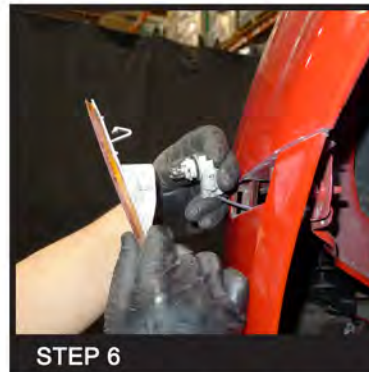
STEP 4

Remove the three T20 bolts on the wheel liner



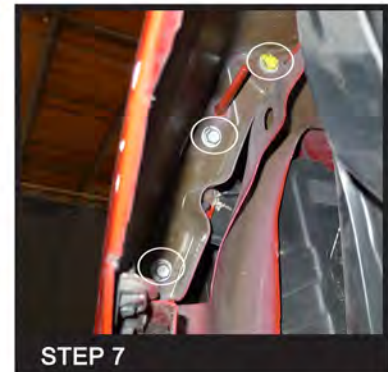
STEP 5

Use the flathead screwdriver to remove the side marker light



STEP 6

Remove the side marker light



STEP 7

Remove the three 10mm front bumper mounting bolts



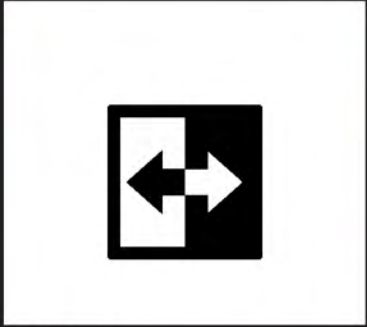
STEP 8

Remove one 7mm and one 10mm front bumper mounting bolt on the side of the bumper



STEP 9

Disconnect the fog light harness



STEP 10

Please repeat the steps from 4 to 9 for the opposite side



STEP 11

Remove the front bumper



STEP 12

Remove the two 7mm headlight mounting bolts at the bottom of the headlight



STEP 13

Remove the other two 7mm headlight mounting bolt at the top on the headlight



STEP 14

Disconnect the headlight harness and remove the factory headlight housing



STEP 15

Connect the LED light bar wire to the driving light circuit to get power, white wire for positive and black wire for negative



STEP 16

For LH side driving light, the purple wire is positive and black wire is negative



STEP 17

For RH side driving light, the brown wire is positive and black wire is negative



STEP 18

Connect the headlight harness



STEP 19

Seat the headlight assembly in place



STEP 20

Reinstall the two 7mm headlight mounting bolts at the top



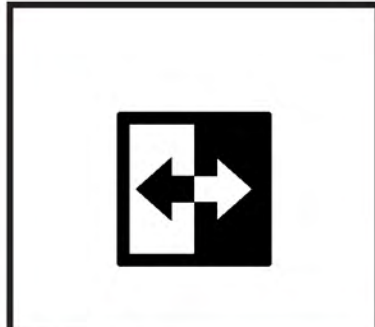
STEP 21

Reinstall the two 7mm headlight mounting bolt at the bottom



STEP 22

Connect the fog light harness



STEP 23

Please repeat the steps from 12 to 22 for the opposite side



STEP 24

Reinstall the front bumper



STEP 25

Reinstall the three 10mm front bumper mounting bolts



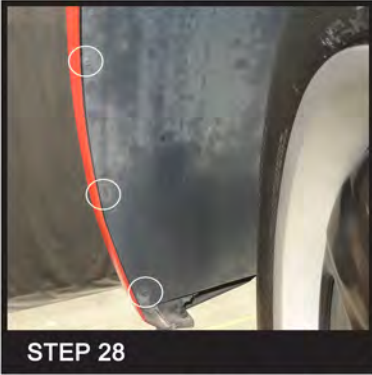
STEP 26

Reinstall one 7mm and one 10mm front bumper mounting bolt on the side of the bumper



STEP 27

Reinstall the side marker light



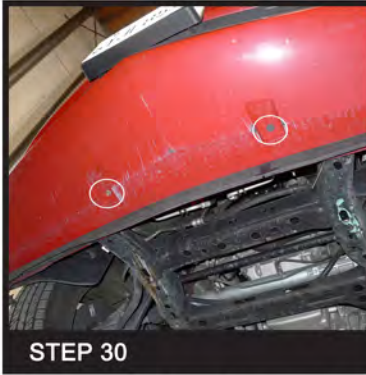
STEP 28

Reinstall the three T20 bolts on the wheel liner



STEP 29

Please repeat the steps from 25 to 28 for the opposite side



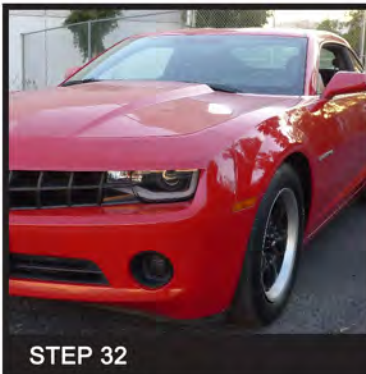
STEP 30

Reinstall the two 10mm bolts under the front bumper



STEP 31

Reinstall the six plastic fastener clips and two 10mm bolts



STEP 32

Close the hood. The installation is now complete

Installation & CARE

2010 CHEVY CAMARO PROJECTOR HEADLIGHTS INSTALLATION INSTRUCTIONS

BEFORE INSTALLATION

- If you experience any difficulties that the instruction did not cover, please seek assistance at local automotive shop.
- Please wear protection before you work on any vehicle.
- An assistant is useful when removing the front bumper from your vehicle.
- Please be cautious when working with the bumper or any parts belonging to the vehicles's body to prevent scratching.
- Do not make direct contact with the halogen bulbs or the wire assembly until the unit has cooled down after use.

2010 CHEVY CAMARO PROJECTOR HEADLIGHTS INSTALLATION INSTRUCTIONS

High/Low Beam Adjustment Screws

