

SPEC-D *Tuning*

2006-2009 NISSAN 350Z PROJECTOR HEADLIGHTS INSTALLATION INSTRUCTIONS

If you experience any difficulties that the instruction did not cover, Please seek assistance at a local automotive shop

Please wear protection before you work on any vehicle.



An assistant is useful when removing the front bumper from your vehicle.

Please be cautious when working with the bumper or any parts belonging to the vehicle's body to prevent scratching.

Do not make direct contact with the halogen bulbs or the wire assembly until the unit has cooled down after use.

TOOLS AND SUPPLIES REQUIRED

3/8" Drive Ratchet

6" Extension

10mm Socket

Phillips Screwdriver

Handy Remover

If your Headlight is Halo type, you also need:

Wire Stripper

Wire Crimper

4 Blue Quick Splice Wire Connectors

4 Blue Male Quick Wire Connectors

4 Blue Female Quick Wire Connectors

2 Red Wires (8 inch)

2 Black Wires (8 inch)

Product Part Numbers:

LHP-350Z06JM-RS

LHP-350Z06-RS



NISSAN 350Z PROJECTOR HEADLIGHTS INSTALLATION INSTRUCTIONS

If you experience any difficulties that the instruction did not cover, Please seek assistance at a local automotive shop

Please wear protection before you work on any vehicle.



An assistant is useful when removing the front bumper from your vehicle.

Please be cautious when working with the bumper or any parts belonging to the vehicle's body to prevent scratching.

Do not make direct contact with the halogen bulbs or the wire assembly until the unit has cooled down after use.



1. Before



2. (10) 10mm bolts location



3. Remove (10) 10mm bolts



4. (6) plastic clips location



5. Remove (6) plastic clips



6. Remove the (3) plastic clips



7. (3) 10mm bolts location



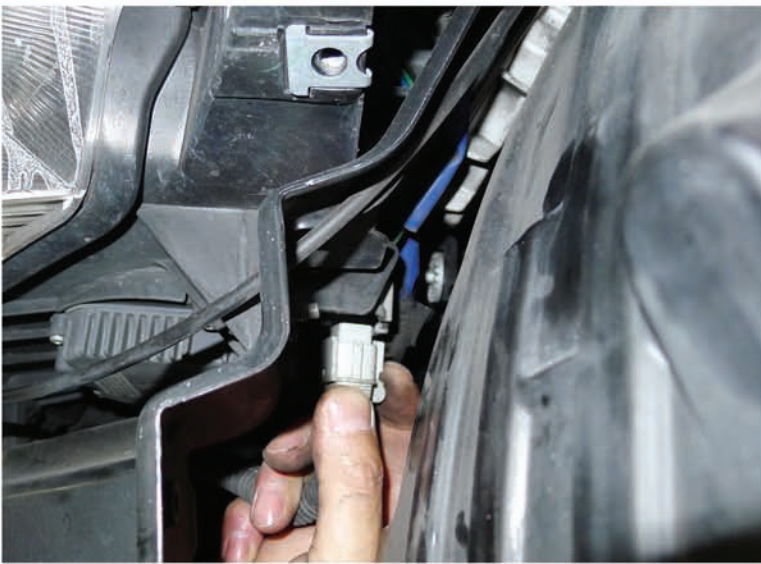
8. Remove (3) 10mm bolts



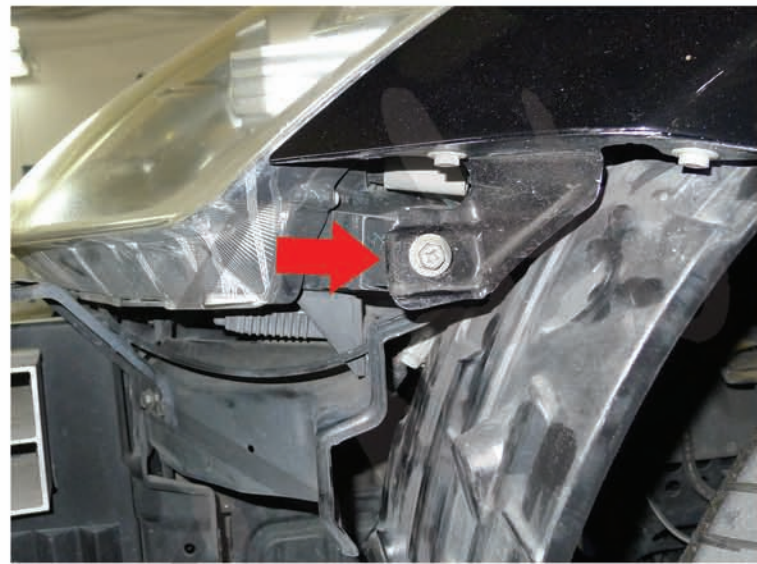
9. Remove the front bumper



10. Remove the impact absorber



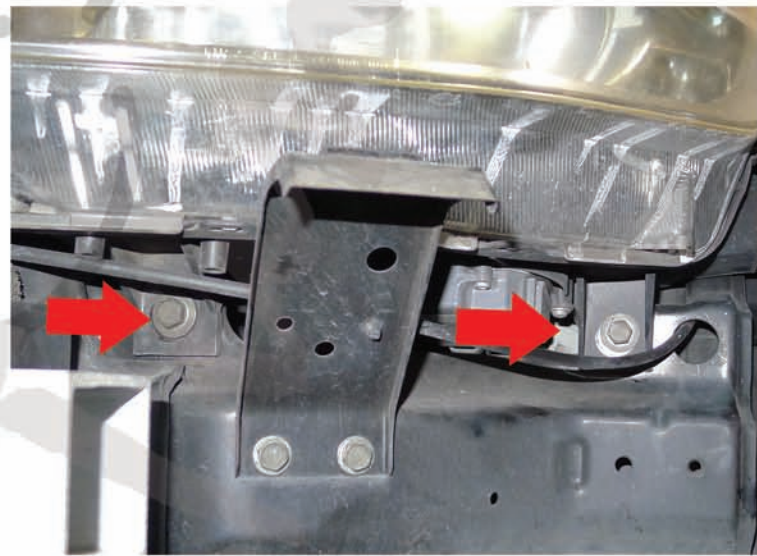
11. Disconnect the headlight harness



12. 10mm bolt location



13. Remove the 10mm bolt



14. (2) 10mm bolts location



15. Remove (2) 10mm bolts



16. Remove the 10mm bolt

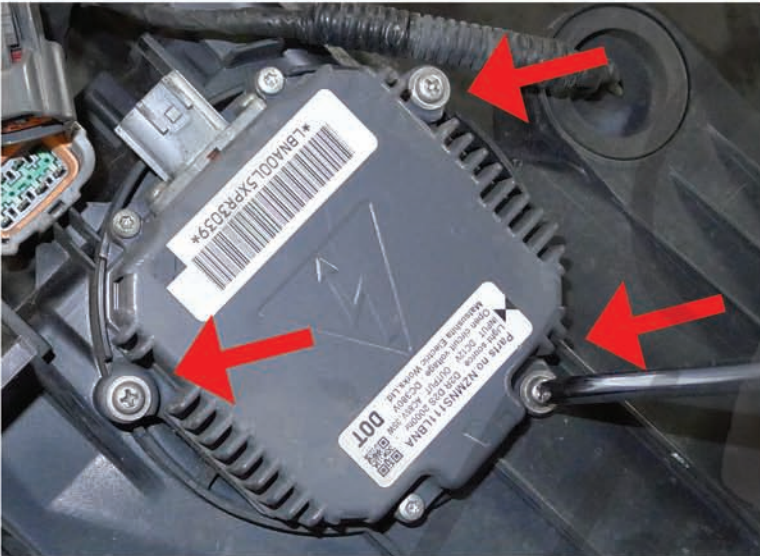


17. Remove the factory headlight



18. Disconnect the harness from the ballast

Please see the "Halo and L. E. D. headlights installation instructions"
If your headlights don't have Halo and L. E. D. You can skip the installation instruction.



19. Remove (3) Phillips head screws



20. Remove the access hole cover



21. Disconnect the HID bulb socket



22. Remove the HID bulb



23. Remove the ballast from the headlight housing



24. Remove the Phillips head screw



25. Disconnect the HID light socket harness from the ballast



26. Remove the HID light socket harness from the factory housing



27. New projector headlight



28. Remove the access hole cover from the new projector headlight



29. Install the HID bulb into the new projector headlight



30. Lock the HID bulb



31. Run the HID bulb socket harness through the new headlight housing



32. Install the HID socket onto HID bulb



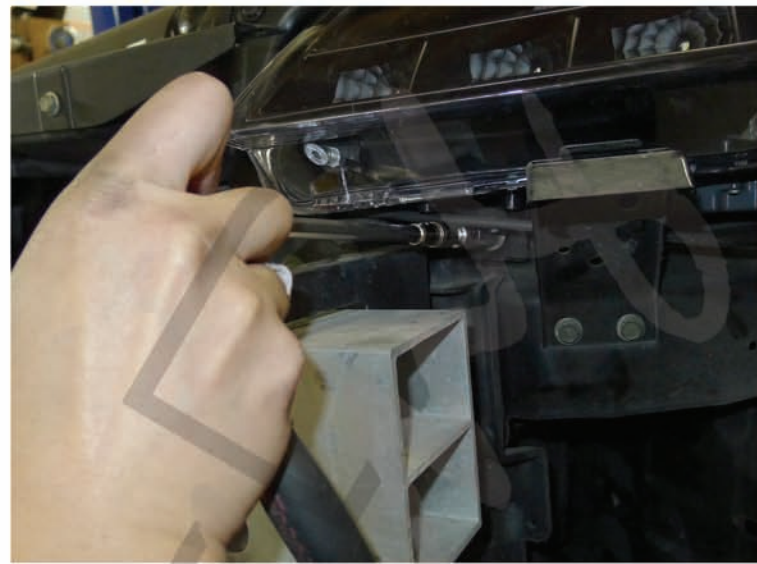
33. Replace the access hole cover



34. Connect the HID socket harness to the ballast



35. Tighten (2) 10mm bolts



63. Tighten (2) 10mm bolts



64. Replace the impact absorbing foam



65. Replace the front bumper



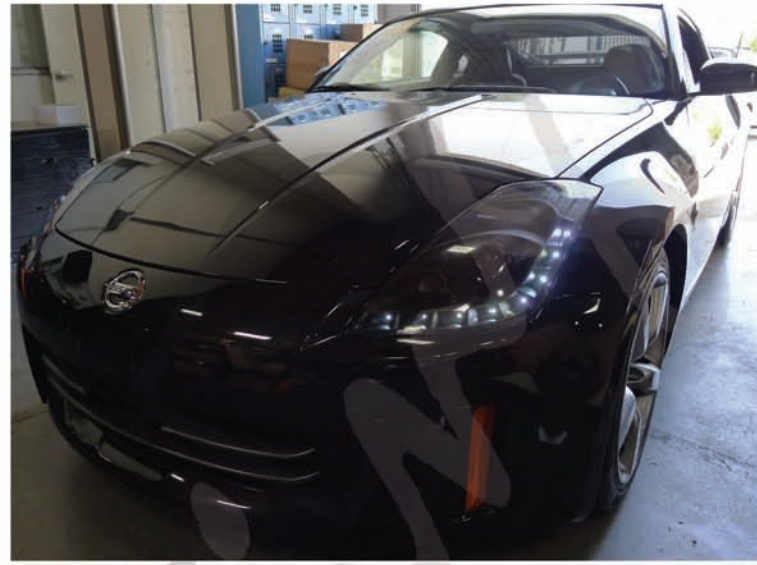
39. Replace (6) plastic clips



40. Tighten (3) 10mm bolts



41. Tighten (10) 10mm bolts
Please repeat the steps from 1 to 41 for the opposite side



42. The installation is now complete

SPEC TUNING