

SPEC-D *Tuning*

1996-1998 HONDA CIVIC FOG LIGHTS INSTALLATION INSTRUCTIONS

*If you experience any difficulties that the instructions did not cover, Please seek assistance at local automotive shop.

*Please wear protection before you work on your vehicle.

*An assistant is useful when removing the front bumper from your vehicle.

*Please be cautious when working with the bumper or any parts belonging to the vehicles' body prevent scratching.

*Do not make direct contact with the halogen bulb or the wire assembly until the unit has cooled down after use.



TOOLS AND SUPPLIES REQUIRED

1/4" Drive Ratchet	Knife/Box cutter
6" Extension	Pliers
10mm Socket	Cutter
Phillips Screwdriver	Test Light

Product Part Numbers:

LF-CV96AM-DP

LF-CV96G-DP

LF-CV96AM-WJ

LF-CV96G-WJ



1996-1998 HONDA CIVIC FOG LIGHTS INSTALLATION INSTRUCTIONS

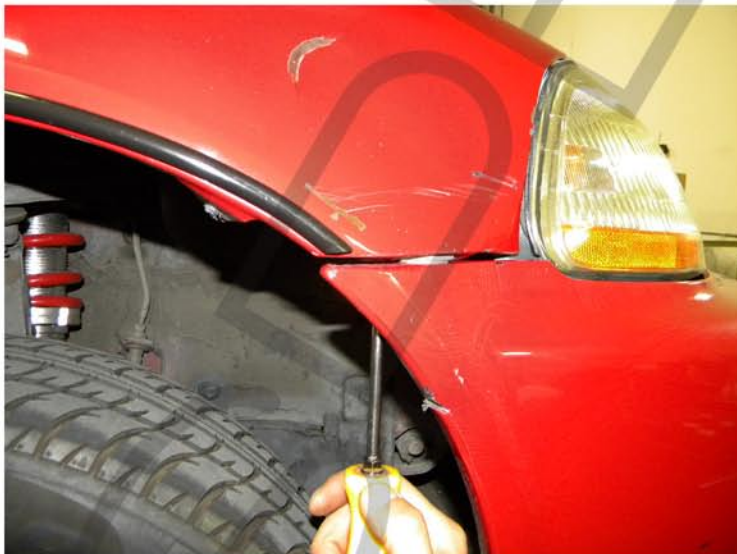
- *If you experience any difficulties that the instructions did not cover, Please seek assistance at local automotive shop.
- *Please wear protection before you work on your vehicle.
- *An assistant is useful when removing the front bumper from your vehicle.
- *Please be cautious when working with the bumper or any parts belonging to the vehicles' body prevent scratching.
- *Do not make direct contact with the halogen bulb or the wire assembly until the unit has cooled down after use.



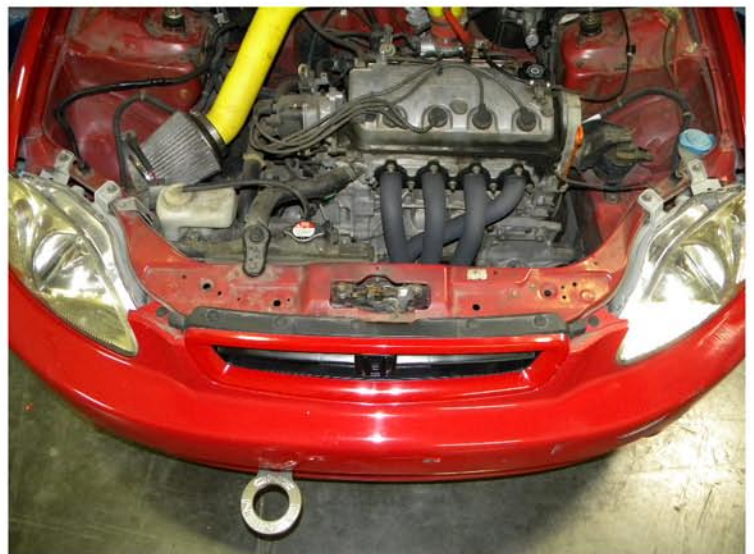
1. Under the bumper are the 10mm bolt locations



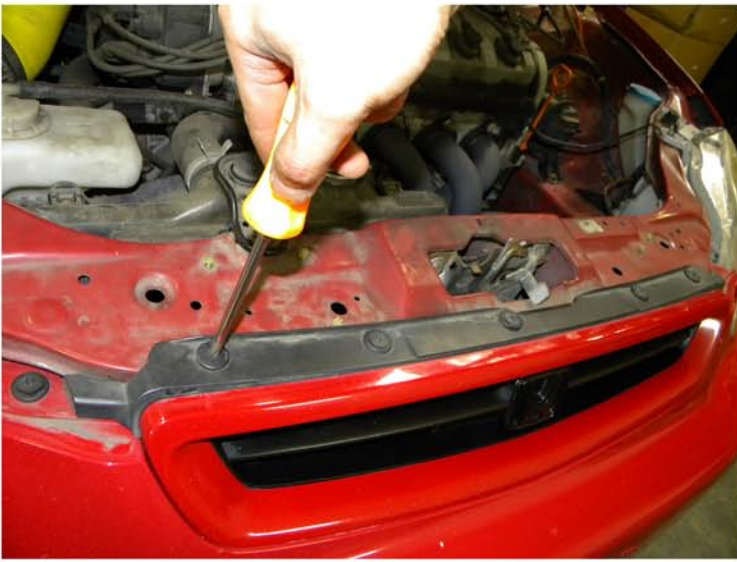
2. Remove the (2) 20mm bolts



3. Remove the phillips head screw



4. Top of the bumper are the (7) clip locations



5. Remove the (7) plastic clips



6. Remove the front bumper



7. Remove the cut out from the front bumper



8. Remove the cut out from the front bumper



9. Remove the cut out from the front bumper



10. Remove the cut out from front the bumper



11. Remove the cut out from the front bumper



12. Cut the center rib with a cutter or a saw



13. Remove the center rib



14. Center the rib removed



15. Place the fog light mounting bracket into the position



16. Fasten the mounting brackets onto the bumper with the (2) phillips head screws



17. Tighten the phillips head screws



18. Place the fog light assembly into the position



19. Tighten the phillips head screw



20. Remove the 10mm bolt



21. Connect the red wire from the fog light harness and tighten the 10mm bolt



22. Run the fog light harness through the bulkhead along the stock harness



23. Run the fog light harness along the stock harness



24. Rubber grommet locate



25. Cut a small slit in the rubber grommet



26. Run the fog light harness wire switch through the rubber grommet



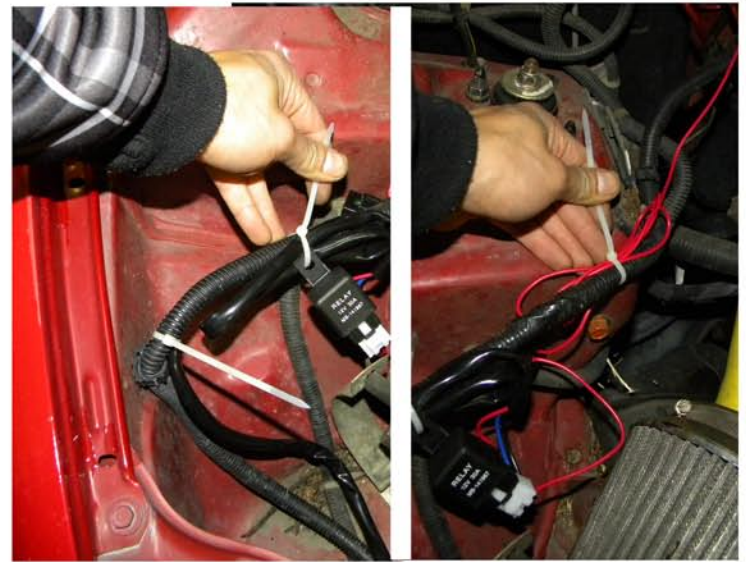
27. Remove the 10mm bolt



28. Connect the fog light harness ground wire to the 10mm bolt and tighten



29. Zip the fog light harness onto the stock harness



30. Zip the excess wiring and relay to the stock harness



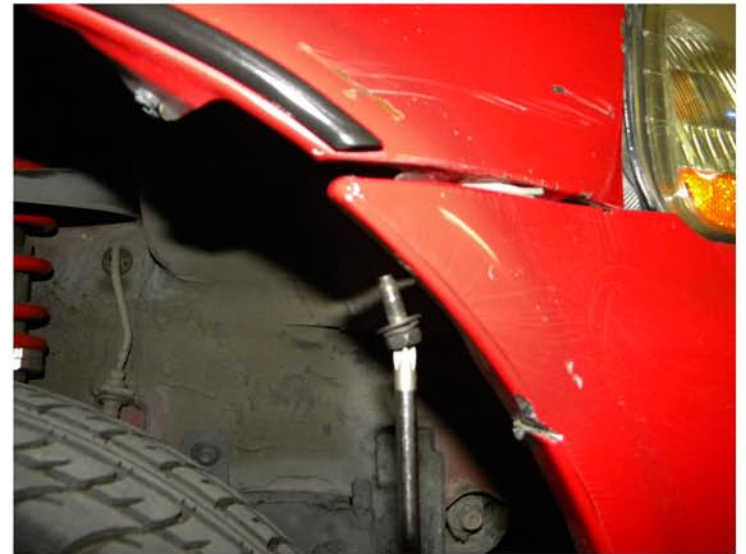
31. Connect the fog light to the fog light harness



32. Replace the front bumper



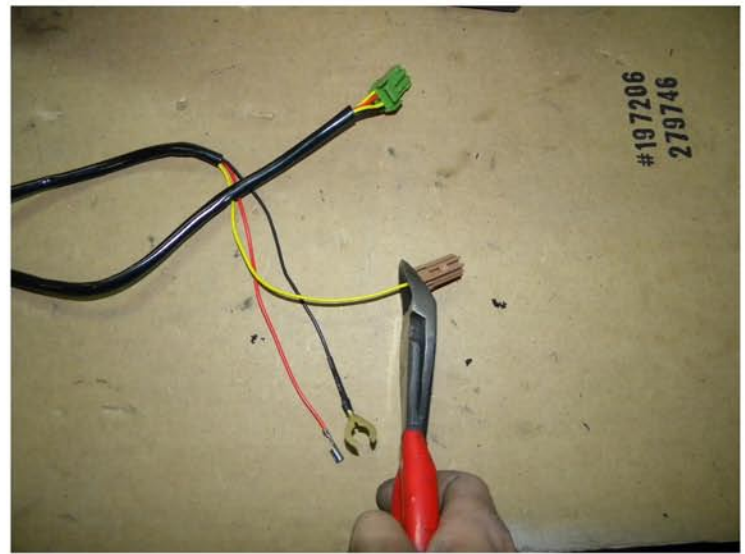
33. Replace the (7) plastic clips



34. Replace the phillips head screw



35. Tighten the (2) 10mm bolts



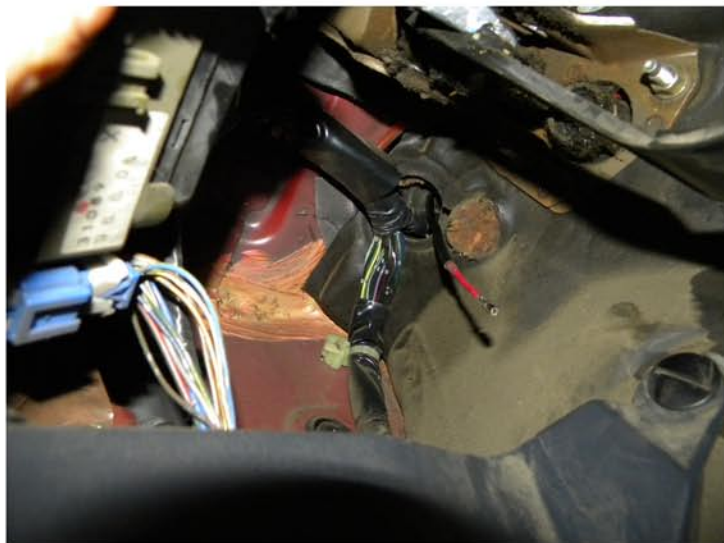
36. Remove the brown connector front switch harness



37. Remove the (3) phillips head screws from the lower dash panel



38. Remove the lower dash panel



39. Locate the red switch wire though the rubber grommet



40. Connect the switch harness



41. Remove the 10mm bolt



42. Connect the switch harness ground wire to the 10mm bolt and tighten the 10mm bolt



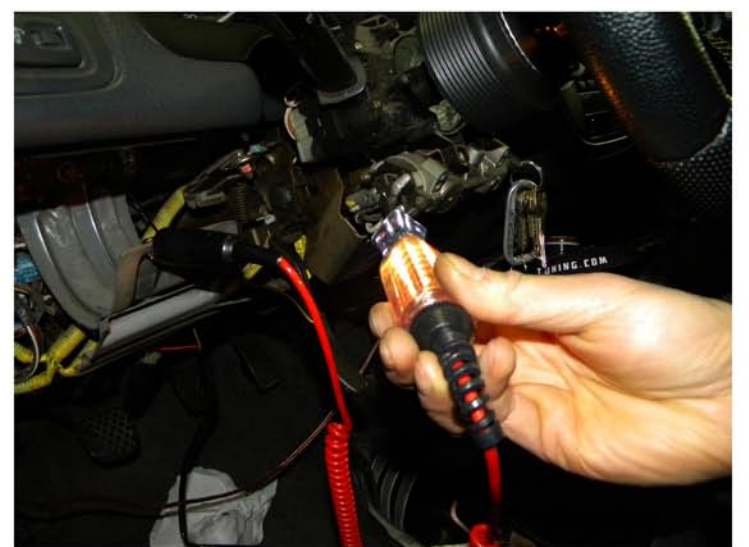
43. Switch the harness ground wire



44. Remove the (3) phillips head screws from the steering column cover



45. Remove the steering column cover



46. Locate the ACC power wire with the test light



47. Connect the yellow wire on the switch harness to the ACC power wire using a quick connector



48. Replace the steering column cover



49. Tighten the (3) phillips head screws



50. Remove the plastic cover on the lower dash panel



51. Replace the cover with a fog light switch



52. Connect the switch harness to the fog light switch



53. Replace the lower dash panel



54. Tighten the (3) Phillips head screws



55. Please repeat the steps in order from 1 to 54 for the opposite side



56. The installation now is complete

