

SPEC-D *Tuning*

2006-2007 SUBARU IMPREZA WRX LED PROJECTOR HEADLIGHTS INSTALLATION INSTRUCTIONS

If you experience any difficulties that the instruction did not cover, Please seek assistance at a local automotive shop

Please wear protection before you work on any vehicle.



An assistant is useful when removing the front bumper from your vehicle.

Please be cautious when working with the bumper or any parts belonging to the vehicle's body to prevent scratching.

Do not make direct contact with the halogen bulbs or the wire assembly until the unit has cooled down after use.

TOOLS AND SUPPLIES REQUIRED

½" Drive Ratchet

Trim Pad Remover

10mm Socket

Flat Tip Screwdriver

Phillips Screwdriver

Product Part Numbers:

2LHP-WRX06JM-TM

2LHP-WRX06-TM

2LHP-WRX06G-TM



2006-2007

SUBARU IMPREZA WRX LED PROJECTOR HEADLIGHTS INSTALLATION INSTRUCTIONS

If you experience any difficulties that the instruction did not cover, Please seek assistance at a local automotive shop

Please wear protection before you work on any vehicle.



An assistant is useful when removing the front bumper from your vehicle.

Please be cautious when working with the bumper or any parts belonging to the vehicle's body to prevent scratching.

Do not make direct contact with the halogen bulbs or the wire assembly until the unit has cooled down after use.



1. (7) Plastic clips location



2. Remove the (7) plastic clips



3. Plastic clip location



4. Remove the plastic clip located under the splash guard



5. Location of the (6) plastic clips



6. Remove the (6) plastic clips



7. Remove the (2) plastic clips



8. Remove the grill



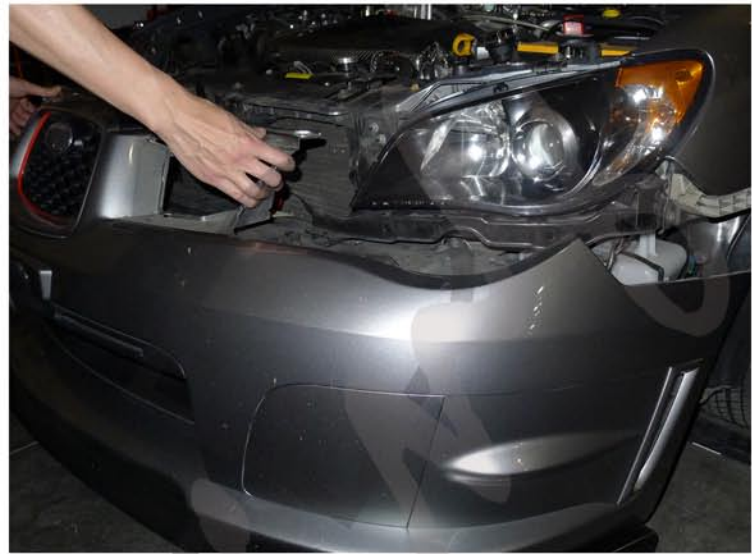
9. Plastic clip location



10. Remove the plastic clip



11. Remove the plastic clip



12. Remove the front bumper



13. 10mm bolt location



14. Remove the 10mm bolt



15. (2) 10mm nut and the (2) 10mm bolts location



16. Remove the (2) 10mm nuts and the (2) 10mm bolts



17. 10mm bolt and the plastic clip location



18. Remove the plastic clip



19. Remove the 10mm bolt



20. Undo the plastic retainer



21. Disconnect the headlight harness
Please see the "Halo and L.E.D installation instructions"
If your headlights don't have HALO or L.E.D. You can skip this step



22. Remove the headlight



23. Remove the metal bracket



24. Place the metal bracket on the new headlight



25. Connect the headlight harness to the new headlight



26. Place the new headlight in the stock location



27. Replace the plastic clip



28. Tighten the 10mm bolt



29. Tighten the 10mm bolt



30. Tighten the (2) 10mm nuts and the (2) 10mm bolts



31. Replace the front bumper



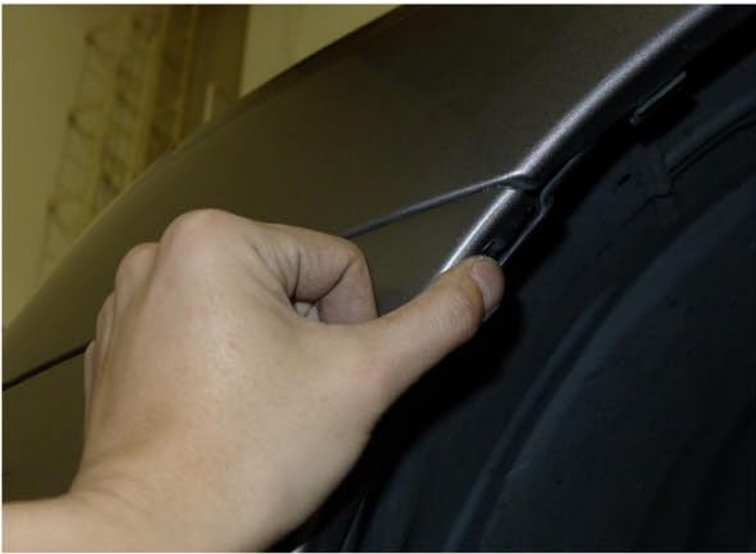
32. Replace the plastic clip



33. Replace the grill



34. Replace the (10) plastic clips on the top side of the bumper



35. Replace the plastic clip



36. Replace the plastic clip located under the splash guard



37. Replace the (7) plastic clips



38. The installation is now complete

