

SPEC-D *Tuning*

2005-2010 TOYOTA TACOMA HALO LED PROJECTOR HEADLIGHTS INSTALLATION INSTRUCTIONS

*If you experience any difficulties that the instructions did not cover, Please seek assistance at local automotive shop.

*Please wear protection before you work on your vehicle.

*An assistant is useful when removing the front bumper from your vehicle.

*Please be cautious when working with the bumper or any parts belonging to the vehicles' body prevent scratching.

*Do not make direct contact with the halogen bulb or the wire assembly until the unit has cooled down after use.



TOOLS AND SUPPLIES REQUIRED

¼" Drive Ratchet

Trim Pad Remover

10mm Socket

6" Extension

Flat Head Screwdriver

If your Headlight is Halo type, you also need:

Wire Stripper

Wire Crimper

4 Blue Quick Splice Wire Connectors

4 Blue Male Quick Wire Connectors

4 Blue Female Quick Wire Connectors

2 Red Wires (8 inch)

2 Black Wires (8 inch)

Product Part Numbers:

2LHP-TAC06JM-TM

2LHP-TAC06-TM



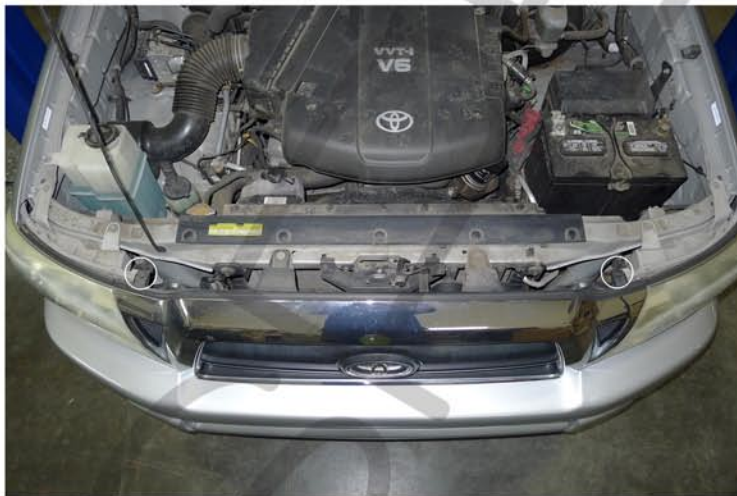
- *If you experience any difficulties that the instructions did not cover, Please seek assistance at local automotive shop.
- *Please wear protection before you work on your vehicle.
- *An assistant is useful when removing the front bumper from your vehicle.
- *Please be cautious when working with the bumper or any parts belonging to the vehicles' body prevent scratching.
- *Do not make direct contact with the halogen bulb or the wire assembly until the unit has cooled down after use.



1. (2) 10mm screws location



2. Remove the (2) 10mm screws



3. (2) plastic clips location



4. Remove the (2) plastic clips



5. Remove the front grill



6. Remove the plastic clip



7. Remove the headlight garnish



8. (3) plastic clips location



9. Remove the (3) plastic clips



10. Pull the front bumper forward to expose 10mm screw



11. Remove the 10mm screw



12. Remove the plastic clip



13. Pull inner fender liner aside



14. Reach in to remove the 10mm bolt attached to the headlight



15. Remove the 10mm bolt



16. Remove the (2) 10mm screws



17. Remove the headlight



18. Disconnect the light sockets



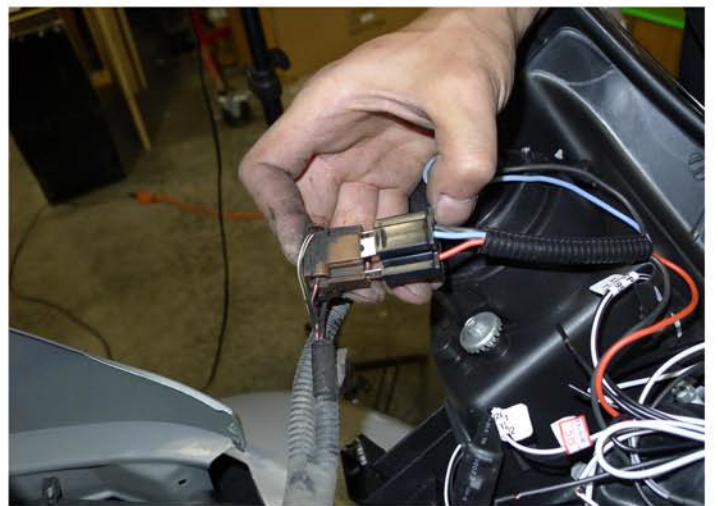
19. Disconnect the light socket



20. Disconnect the headlight harness



21. Connect the light sockets to the new headlight
Please see the Halo and L.E.D installation instruction
If your headlights don't have HALO or L.E.D. You can skip it



22. Connect the headlight harness to the new headlight



23. Place the new headlight in the stock location



24. Tighten the (2) 10mm screws



25. Tighten the 10mm screw



26. Replace the headlight garnish



27. Replace the plastic clip



28. Replace the (3) plastic clips



29. Replace the front grill



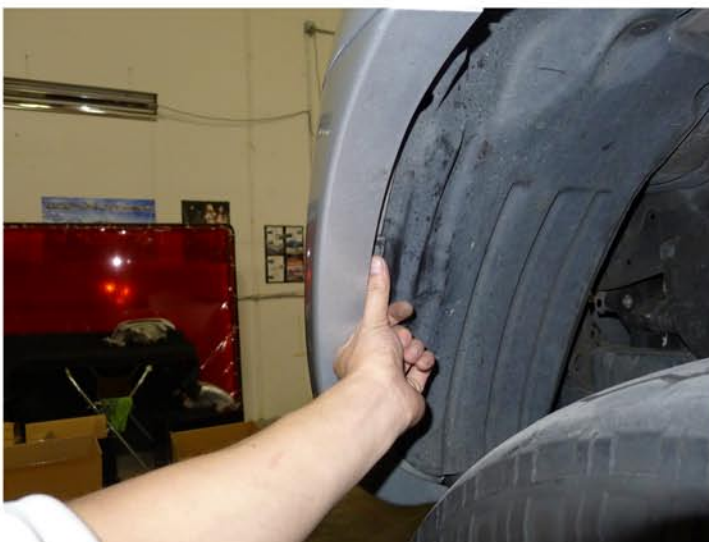
30. Replace the (2) plastic clips



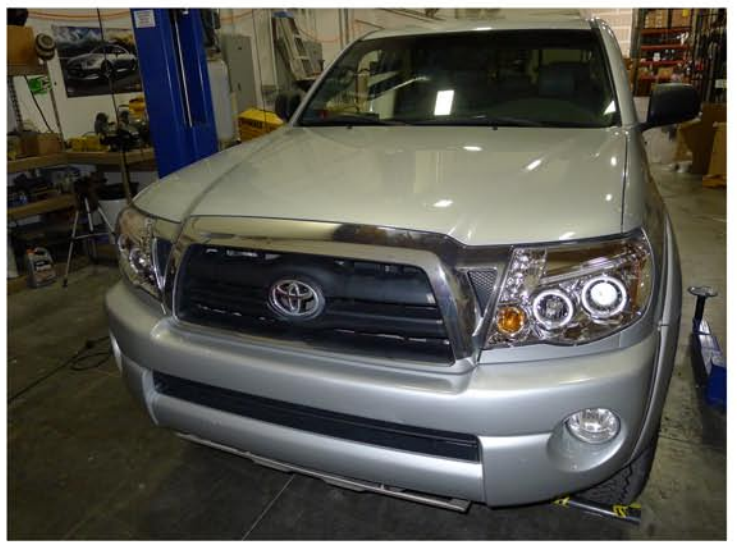
31. Replace the (2) 10mm screws



32. Tighten the 10mm bolt attached to headlight



33. Replace the plastic clip
Please repeat the steps in order from 1 to 33 for the opposite side



34. The installation is now complete