

INSTALLATION & CARE

2004-2008 FORD F150 PROJECTOR HEADLIGHTS INSTALLATION INSTRUCTIONS

BEFORE INSTALLATION:

- If you experience any difficulties that the instructions did not cover, please seek assistance at a local automotive shop.
- Please wear proper protective equipment before you work on any vehicle.
- An assistant is recommended when removing the front bumper from your vehicle.
- Please be cautious when working with the bumper or any parts belonging to the vehicle's body to prevent scratching.
- Do not make direct contact with the halogen bulbs or the wire assembly until the unit has cooled down after use.

TOOLS AND SUPPLIES REQUIRED

1/4" Ratchet	Plastic Pry bar	10 mm Socket	Trim Pad Remover
			

PRODUCT NUMBER

2LHP-F15004-G2-TM
 2LHP-F15004JM-G2-TM
 2LHP-F15004G-G2-TM
 2LHP-F15004SM-G2-TM

LET'S START THE INSTALLATION



STEP 1

Remove the plastic fastener clip



STEP 2

Remove the 10mm headlight mounting bolt at the top



STEP 3

Remove the two 10mm headlight mounting bolts at the grille side



STEP 4

Unseat the factory headlight housing



STEP 5

Disconnect the headlight harness and remove the factory headlight housing



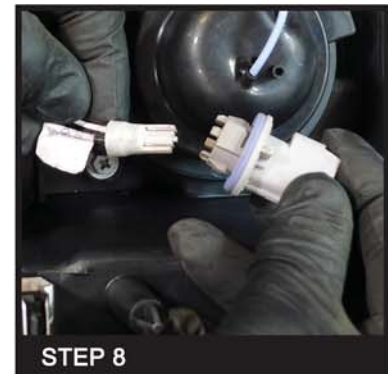
STEP 6

Remove the parking light socket and the signal light socket from the factory headlight housing



STEP 7

Remove the parking light bulb from the socket



STEP 8

Install the socket to the wire plug from the new headlight housing



STEP 9

Install the parking light socket to the new headlight housing



STEP 10

Install the signal light socket to the new headlight housing



STEP 11

Connect the headlight harness



STEP 12

Seat the new headlight assembly in place



STEP 13

Reinstall the three 10mm headlight mounting bolts



STEP 14

Reinstall the plastic fastener clip



STEP 15A

Install the rubber molding at the side of the headlights



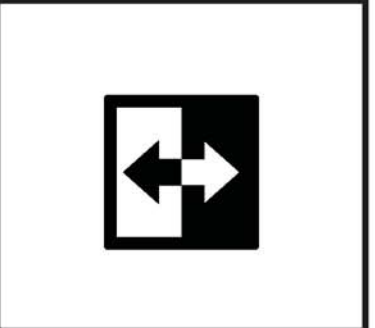
STEP 15B

Install the rubber molding at the side of the headlights



STEP 15C

Install the rubber molding at the side of the headlights



STEP 16

Please repeat the steps from 1 to 15C for the opposite side



STEP 17

Close the hood to complete the installation

