

SPEC-D *Tuning*

2006-2009 DODGE CALIBER HALO PROJECTOR HEADLIGHTS INSTALLATION INSTRUCTIONS



If you experience any difficulties that the instruction did not cover, Please seek local auto shop for advise. Please wear protection before you work on your vehicle.

An assistant is helpful when removing the front bumper.

Please be careful while working with the bumper or body part to avoid scratching.

Do not make direct contact with the halogen bulb or the wire assembly until the unit has cooled down after use.

TOOLS AND SUPPLIES REQUIRED

Trim Pad Remover 7mm Socket

Handy Remover ¼" Drive Extensions (6 to 10 inches)

T25 Socket ¼" Drive Ratchet

10mm Socket Pliers

If your Headlight is Halo type, you also need: 4 Blue Male Quick Wire Connectors

Wire Stripper 4 Blue Female Quick Wire Connectors

Wire Crimper 2 Red Wires (8 inch)

4 Blue Quick Splice Wire Connectors 2 Black Wires (8 inch)

Product Part Numbers:

2LHP-CAL06-TM

2LHP-CAL06B-TM

2LHP-CAL06JM-TM

2LHP-CAL06JMB-TM



DODGE CALIBER HALO PROJECTOR HEADLIGHTS INSTALLATION INSTRUCTIONS



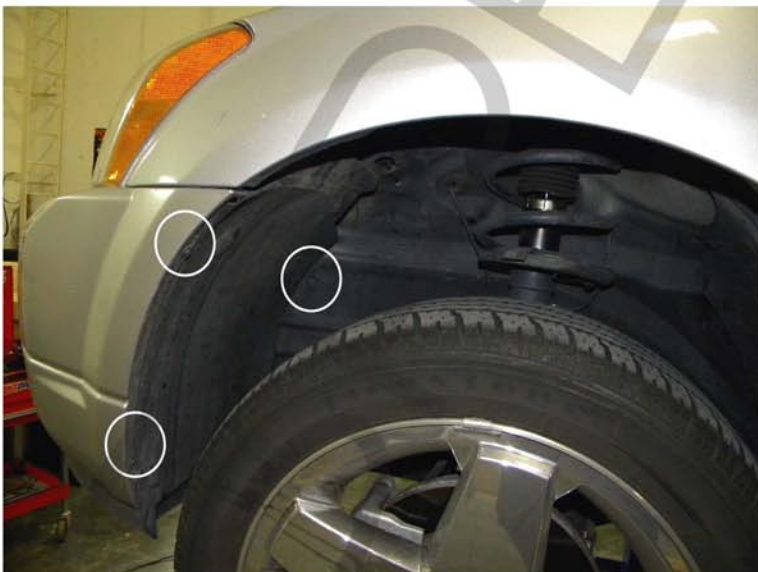
If you experience any difficulties that the instruction did not cover, Please seek local auto shop for advise.
Please wear protection before you work on your vehicle.
An assistant is helpful when removing the front bumper.
Please be careful while working with the bumper or body part to avoid scratching.
Do not make direct contact with the halogen bulb or the wire assembly until the unit has cooled down after use.



1. Remove four clips and three 10mm bolts



2. Disconnect the fog light harness



3. Remove one clip and two 7mm bolts



4. Remove one 7mm bolt and one clip from inside of the bumper



5. Remove six T25 bolts



6. Remove the front bumper



7. Remove three 10mm headlight bolts



8. Pull out the headlight



9. Disconnect all headlight harnesses then remove the headlight



10. Connect all the headlight harnesses

Please see the Halo and L.E.D installation instruction
If your headlights don't have HALO or L.E.D. You can skip it



11. Install the projector headlight back to original location



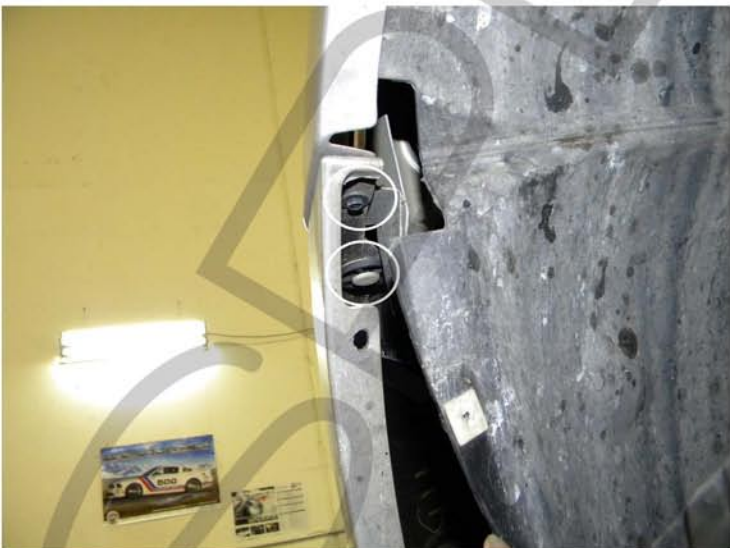
12. Install three 10mm headlight bolts



13. Install the front bumper



14. Install six T25 bolts



15. Install one 7mm bolt and one clip on inside of the bumper



16. Install one clip and two 7mm bolts



17. Connect the fog light harness



18. Install four clips and three 10mm bolts



19. Please repeat the steps from 1 to 19 for the opposite side



20. The installation is now complete

SPEC-D