

Installation & CARE

2006-2010 CHEVY IMPALA HEADLIGHTS INSTALLATION

BEFORE INSTALLATION

- If you experience any difficulties that the instruction did not cover, please seek assistance at local automotive shop.
- Please wear protection before you work on any vehicle.
- An assistant is useful when removing the front bumper from your vehicle.
- Please be cautious when working with the bumper or any parts belonging to the vehicles's body to prevent scratching.
- Do not make direct contact with the halogen bulbs or the wire assembly until the unit has cooled down after use.

TOOLS AND SUPPLIES REQUIRED

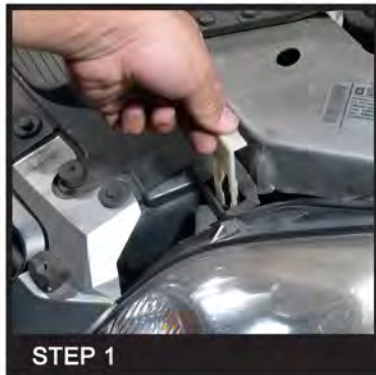
¼" Ratchet	7 mm socket		
			

PRODUCT NUMBER

2LH-IPA06JM-V2-RS
2LH-IPA06G-V2-RS
2LH-IPA06-V2-RS



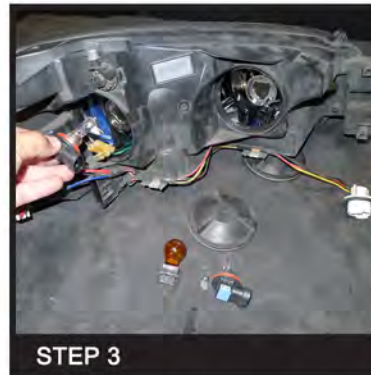
LET'S START THE INSTALLATIONS



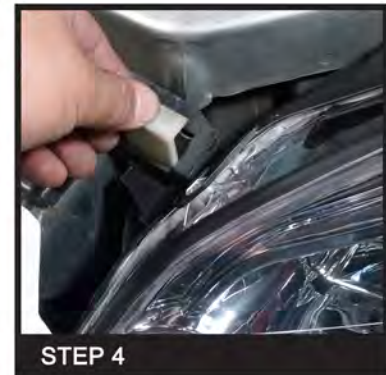
Remove (1) retainers



Remove (1) 7mm bolt then remove the headlight



Transfer all the light bulb from the stock headlight to the new headlight



Install (1) retainers



Tighten (1) 7mm bolt



The installation is completed