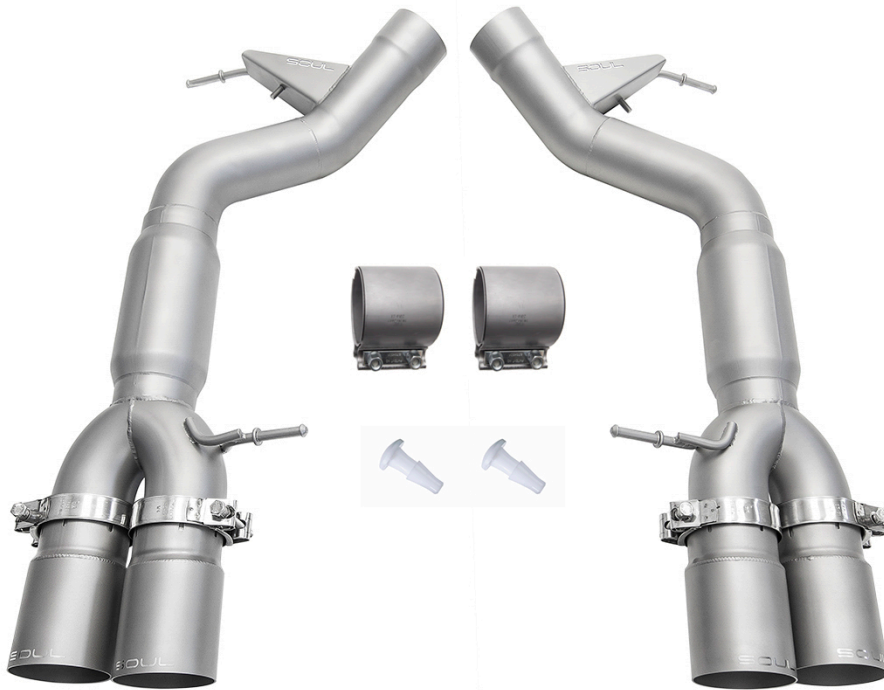


**Disclaimer:** This installation guide is intended to clarify the install of your new Soul Performance Products exhaust. Please take proper precautions and safety measures when working on your vehicle and perform this work at your own risk.



- (1) Driver Side Bypass
- (1) Passenger Side Bypass
- (2) Exhaust Clamps (Torca)
- (4) Exhaust Tips (with clamps)
- (2) Vacuum plugs

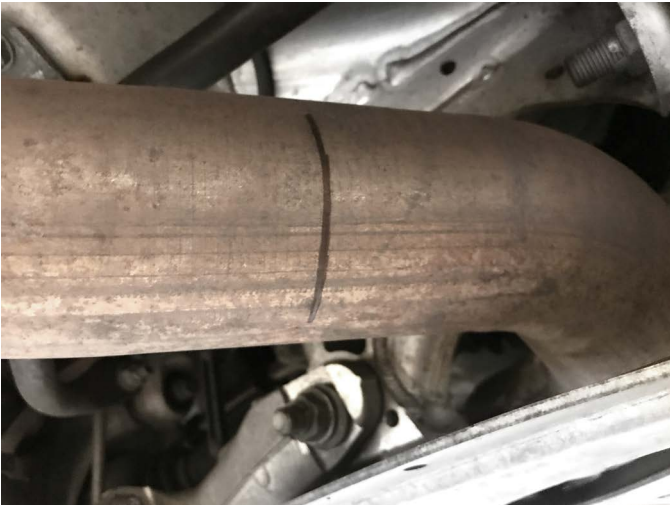
Packing Sign Off \_\_\_\_\_

Shipped on \_\_\_\_/\_\_\_\_/\_\_\_\_



**Pictured Left:** Start by removing the exhaust grounding strap (13mm bolt) from the OEM Exhaust.

**Pictured Right:** Locate the OEM factory cut point / dimples on the underside of the exhaust



**Pictured Left:** We recommend drawing a straight line around the OEM tubing as a guide for a straight cut

**Pictured Right:** Cut the exhaust tubing with the method of your choice. We recommend a reciprocating saw. Clean up any rough edges with sandpaper or a file.

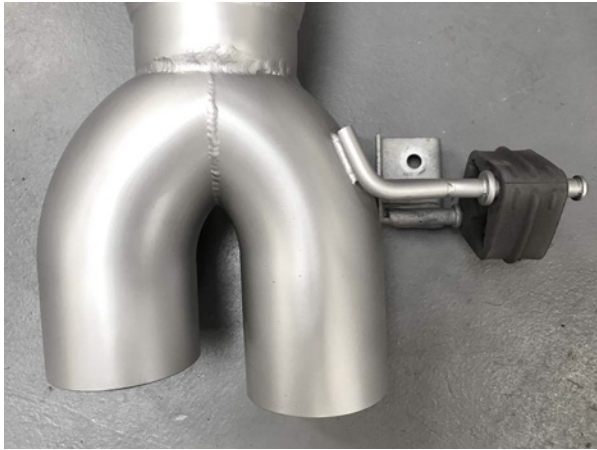




**Pictured Left:** Remove and plug the vacuum line going to the factory exhaust valves with included plugs



**Pictured Left:** Unbolt the factory exhaust hangers to release the factory rear mufflers from the car.



**Pictured Left:** Transfer the OEM exhaust hangers over to your Soul Performance exhaust.



**Pictured Right:** Insert Torca clamps onto factory exhaust and insert SOUL exhaust pipes into the couplers.  
  
Try to ensure the clamp is distributed equally between the factory exhaust and SOUL exhaust.



**Pictured Left:** Reattach the exhaust grounding straps.





**Pictured Above:** Attach SOUL tips (13mm bolts) and adjust them to your liking.



**BE SURE TO THOROUGHLY CLEAN YOUR  
NEW EXHAUST TO REMOVE  
FINGERPRINTS BEFORE STARTING VEHICLE**

**NOTE:** You may notice that after you have heated the exhaust up to operating temperature for the first time that you may need to check all mounting hardware and re-torque as needed. Tips may move slightly after first drive, simply adjust and retighten if necessary.

You have now successfully completed the installation of your new Soul Performance Headers!

**SOUL**  
PERFORMANCE PRODUCTS