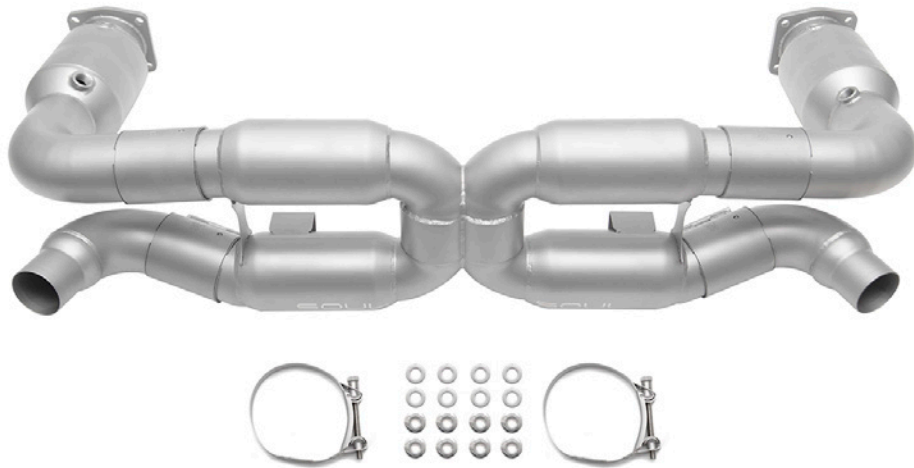


Disclaimer: This installation guide is intended to clarify the install of your new Soul Performance exhaust. **Please review this guide in full before beginning installation.** Do take proper precautions and safety measures when working on your vehicle and perform this work at your own risk.



Please ensure that all components listed below are accounted for before beginning installation:

INCLUDED COMPONENTS

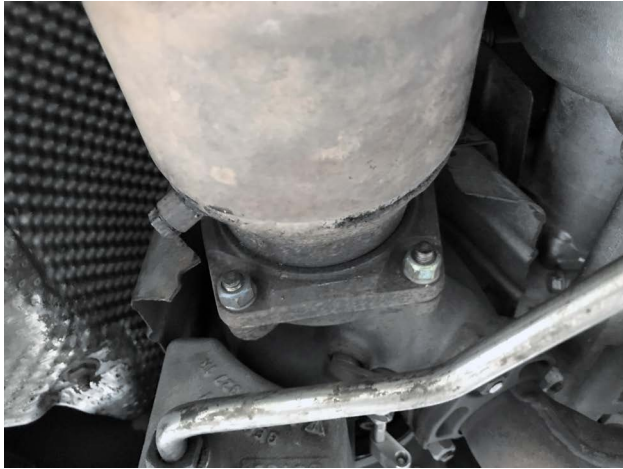
- (1) X-Pipe Exhaust
- (2) Catted Pipes
- (2) Tip Outlets
- (8) Flat Washers
- (8) Locking Nuts
- (4) Exhaust Couplers (Torca)

Packing Sign Off _____

Shipped on ____ / ____ / ____



Step 1: Remove the rear bumper. Follow Porsche service manual instructions or any of the guides available online.



Step 2: Loosen and remove the nuts holding the exhaust to the turbochargers. (Four 13mm nuts on each side)



Step 3: Remove turbo heat shield bolt on both turbos.



Step 4: Support muffler with jack before removing straps



Step 5: Unbolt both OEM muffler band straps while supporting the muffler using M6 allen socket / extension.



Step 6: Slide muffler band straps off brackets



Step 7: CAREFULLY lower exhaust slightly then remove all four O2 sensors (22mm wrench).



Step 8: Pull factory exhaust free from turbo studs and carefully remove from vehicle.



Step 9: After removing exhaust, put heat shields back in place



Step 10: Clean and reinstall OEM turbo gaskets if in good condition, or install new OEM gaskets.



Step 11: LOOSELY install catted sections and install O2 sensors (catless pipes pictures). This allows for play later when installing center X-pipe section.



Step 12: Slide Torca clamps onto ends of catless pipes.



Step 13: Install X-pipe section by lining up with catless sections and slide Torca clamps over.



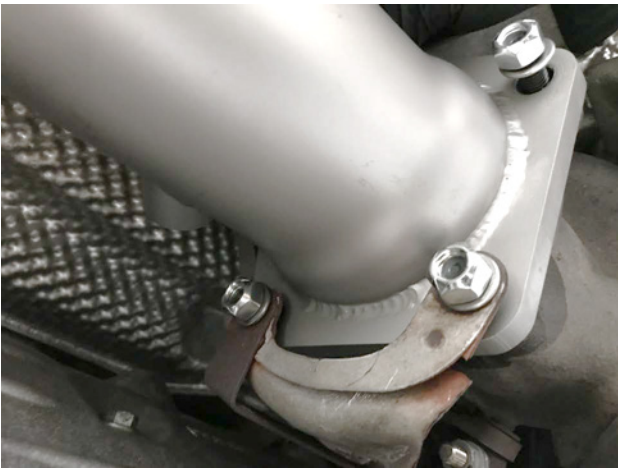
Step 14: Install new band clamps loosely



Step 15: Center X-pipe section into alignment and tighten band clamps.



Step 16: Tighten Torca clamps



Step 17: Tighten and fully torque down exhaust to turbo bolts and heat shield bolts.

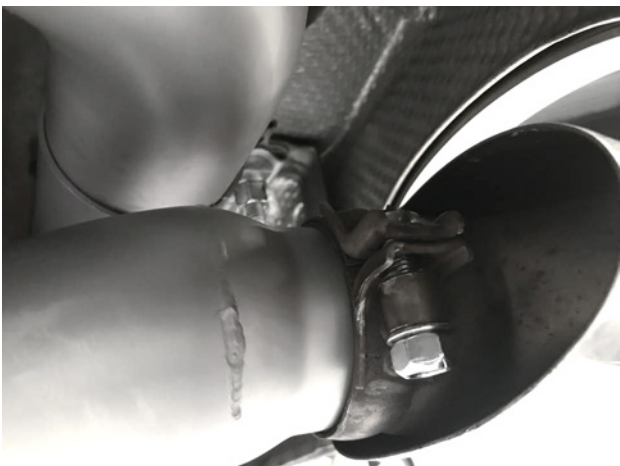


Step 18: Slide Torca clamps onto tip outlets.

Step 19: Reinstall the rear bumper



Step 20 Install tip outlet pipes



Step 21: Install tips and line up tip outlet pipes.

Step 22: At this point, evaluate overall alignment of exhaust before fully tightening down tips to ensure proper alignment and fitment.





Step 23: Double check all hardware is tight, then enjoy your new exhaust!



BE SURE TO THOROUGHLY CLEAN YOUR NEW EXHAUST COMPONENTS TO REMOVE FINGERPRINTS BEFORE STARTING

You have now successfully completed the installation of your new Soul Performance Products exhaust components!

 You may find that after your first full heat cycle of the exhaust that you need to re-adjust the tip placement to your liking. Additionally, the tone and sound of your exhaust will likely change as the mufflers get broken in, roughly a thousand miles or so.

 You may notice smoke and fumes coming from the system upon first starting up the vehicle. This is due to oils used in manufacturing and is not a problem. The smell will dissipate in a short period of time after the exhaust has reached normal operating temperature.

S O U L
PERFORMANCE PRODUCTS