



Installation Instructions
Tire Relocation Bracket
Part # 3721
(CJ, YJ, TJ, JK)

Note: Read instructions entirely before installing this part

Parts Included	Qty	Parts Included	Qty
Relocation Bracket	1	Flat Washer	3
Lug Bolt	3	Lock-nut	3

Step 1: Determine the correct lug bolt pattern you will need depending on the vehicle you have. (See Below)



(41-86 CJ 5x5.5")



(87-06 YJ/TJ 5x4.5")



(07+ JK 5x5")

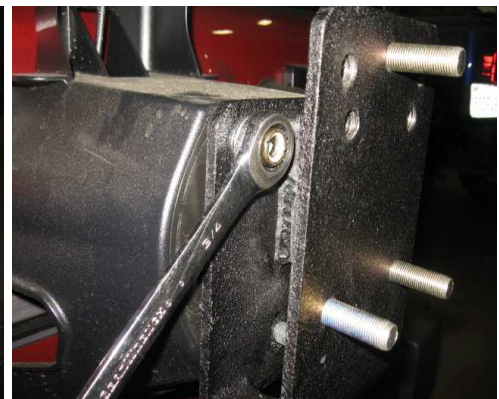
Step 2: Insert the bolts from the back side and thread outward and snug tight. (You may need to angle the bolt in between the bracket plates and then straighten it to thread it in.) Fig A



(Fig A)



(Fig B)



(Fig C)



Installation Instructions
Tire Relocation Bracket
Part # 3721
(CJ, YJ, TJ, JK)

Step 3: Place the bracket onto your tire carrier and secure completely using the included flat washers and ny-lock nuts. (Fig B,C)

Step 4: Mount your spare tire on the bracket and secure using the OEM lug nuts. Torque to OEM specifications. Installation is now complete.



Compliment your tire
from Smittybilts
complete line/sizes
of spare tire covers.

CARE AND MAINTENANCE

Textured coated finishes should be cleaned with a mild soap on a damp sponge. Do not apply polish or wax that requires to be removed by means of buffing. This type of wax is commonly used at car wash facilities.