



## Installation Instructions

### Nerf Steps

07-14 JK 2 & 4 Door

Part # J0746, J0764, J1246

Please read instructions entirely before installing this product.

Parts Included	Qty
Nerf Step Passenger Side	1
Nerf Step Driver Side	1
Adapter Bracket	2
Tek Screw	2
10mm Ny-Lock Nut	2

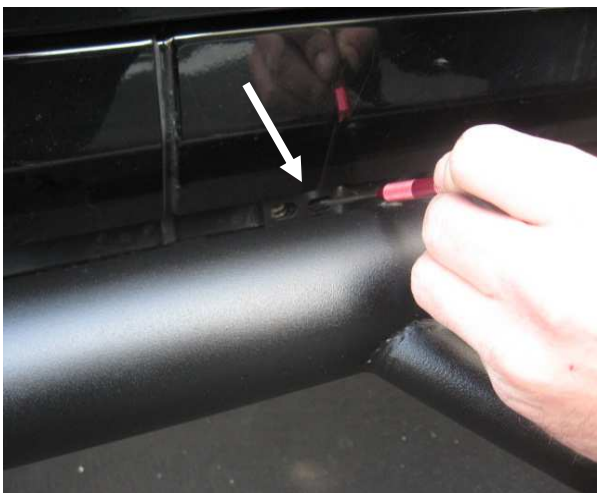
Parts Included	Qty
5/16" Clip	18
5/16" Bolt	18
5/16" Washer	18
10mm Flat Washer	2

**Step 1:** Identify the passenger and driver side bars.

**Step 2:** Remove any OEM or aftermarket side rails/guards (If equipped)

**Step 3:** Hold the step up against the pinch weld with the brackets on the outside of the pinch weld. Using the brackets as a template mark the mounting holes along the pinch weld. (Fig A) Before moving to step 4 with assistance while holding the bar against pinch weld make sure underneath brackets that mount into the bottom of the body tub line up with a hole/slot.

**Step 4:** Set bar to the side and carefully drill marked holes using a 3/8" drill bit. If some of the holes in the pinch weld line up with holes on the bracket proceed to drill these out as well. (Fig B)



(Fig A)



(Fig B)

**Step 5:** Slide the included nut-clips on the holes you previously drilled out. Each pinch weld bracket uses two bolt/clips. (Fig C)

**Step 6:** Install pinch weld bracket bolts. Do not tighten completely at this time. (Fig D)



## Installation Instructions

### Nerf Steps

07-14 JK 2 & 4 Door

Part # J0746, J0764, J1246

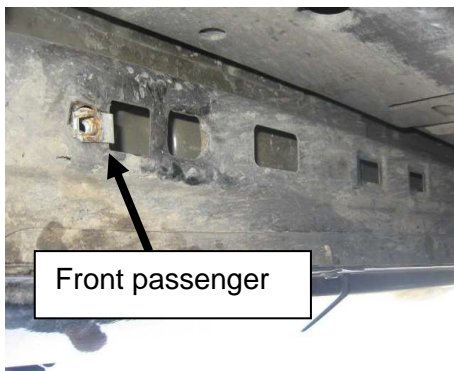


(Fig C)

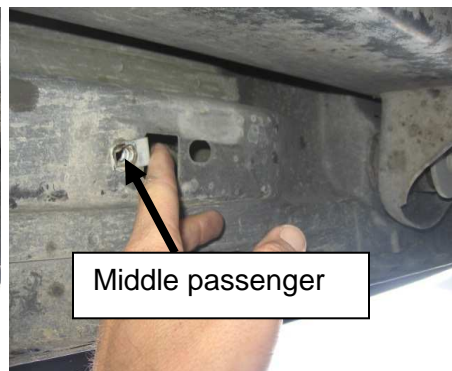


(Fig D)

**Step 7:** Using the brackets as a guide on the underside of the vehicle, place nut clips in bottom of body tub. (Fig E, F, 4-Door shown) The rear bracket lines up with a pre-threaded hole, no nut clip needed. (Fig G) Secure with included hardware. Do not tighten completely.



(Fig E)



(Fig F)



(Fig G)

**Step 8:** With all bolts loosely attached proceed to tighten securely starting with the pinch weld bolts. Repeat steps for opposite side. Installation is now complete.



## Installation Instructions

### Nerf Steps

07-14 JK 2 & 4 Door

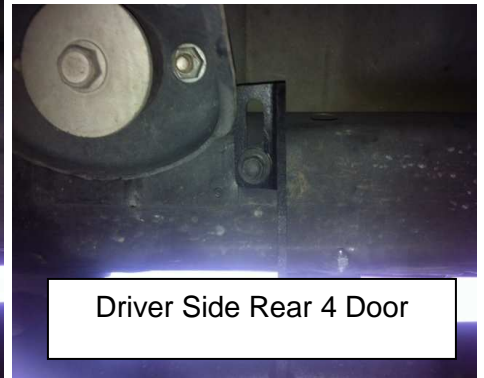
Part # J0746, J0764, J1246



Driver Side Front 4 Door



Driver Side Middle 4 door

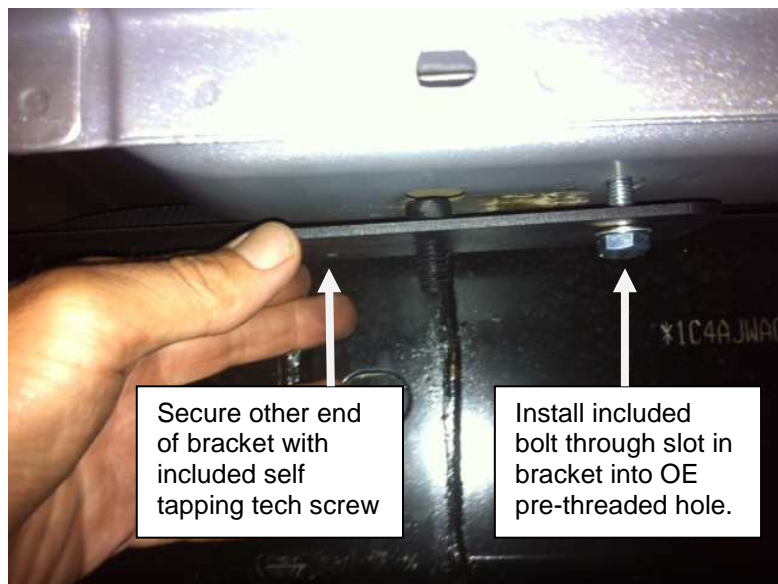


Driver Side Rear 4 Door

### 2012-2014 2-Door Models Rear Bracket Part #J1246

The rear bracket on newer 2 door models do not line up to a hole on the underneath portion of the body. Install the included adapter plates to install nerf steps.

**Step A:** Place the adapter bracket on the bottom of body, the bend on the bracket will go inward on one side and outward on the other. Line the slot in the bracket with the OEM pre-threaded hole and secure with included bolt. Secure the opposite end of the bracket with the included tek screw. (Fig H, J) Before tightening completely make sure rear bracket on Nerf step will line up with threaded stud on bracket. (Fig J)



Secure other end of bracket with included self tapping tech screw

Install included bolt through slot in bracket into OE pre-threaded hole.

(Fig H)

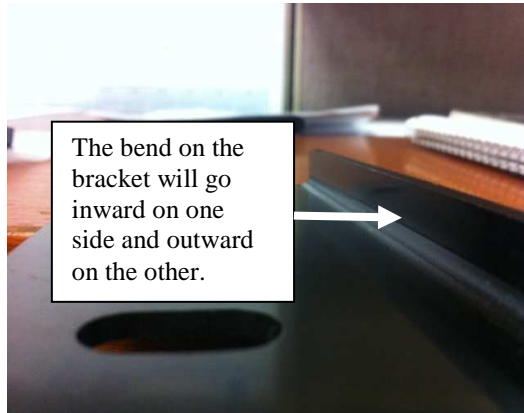


## ***Installation Instructions***

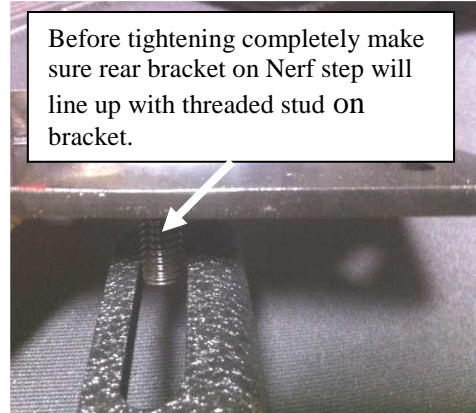
### **Nerf Steps**

07-14 JK 2 & 4 Door

Part # J0746, J0764, J1246



(Fig I)



(Fig J)

**Step B:** Place step to the side and proceed with above installation instructions starting at Step 3 above.

**Step C:** The rear bracket on the step attaches to the adapter plate you previously installed with the included 10mm hardware.





## Installation Instructions

### Nerf Steps

07-14 JK 2 & 4 Door

Part # J0746, J0764, J1246

Please read instructions entirely before installing this product.

Parts Included	Qty
Nerf Step Passenger Side	1
Nerf Step Driver Side	1
Adapter Bracket	2
Tek Screw	2
10mm Ny-Lock Nut	2

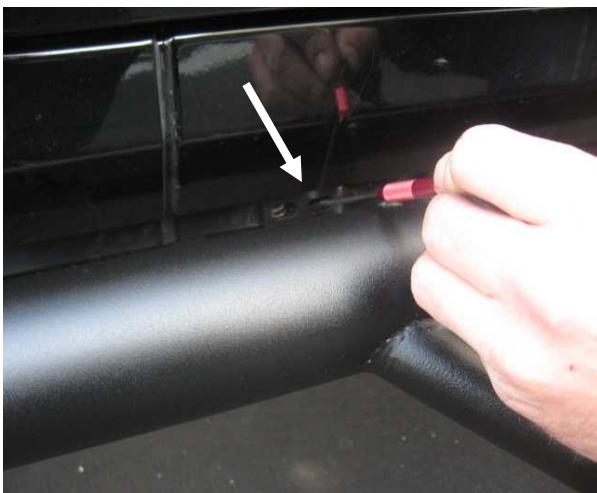
Parts Included	Qty
5/16" Clip	18
5/16" Bolt	18
5/16" Washer	18
10mm Flat Washer	2

**Step 1:** Identify the passenger and driver side bars.

**Step 2:** Remove any OEM or aftermarket side rails/guards (If equipped)

**Step 3:** Hold the step up against the pinch weld with the brackets on the outside of the pinch weld. Using the brackets as a template mark the mounting holes along the pinch weld. (Fig A) Before moving to step 4 with assistance while holding the bar against pinch weld make sure underneath brackets that mount into the bottom of the body tub line up with a hole/slot.

**Step 4:** Set bar to the side and carefully drill marked holes using a 3/8" drill bit. If some of the holes in the pinch weld line up with holes on the bracket proceed to drill these out as well. (Fig B)



(Fig A)



(Fig B)

**Step 5:** Slide the included nut-clips on the holes you previously drilled out. Each pinch weld bracket uses two bolt/clips. (Fig C)

**Step 6:** Install pinch weld bracket bolts. Do not tighten completely at this time. (Fig D)



## ***Installation Instructions***

### **Nerf Steps**

07-14 JK 2 & 4 Door

Part # J0746, J0764, J1246

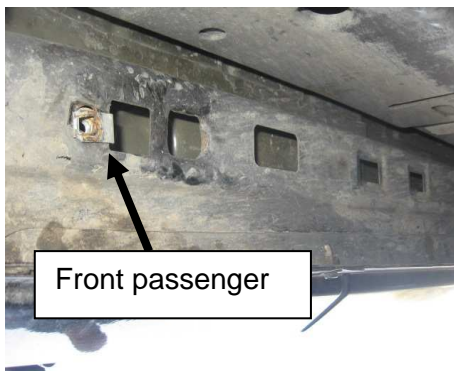


(Fig C)

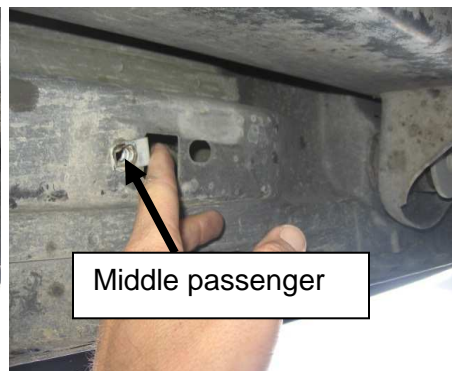


(Fig D)

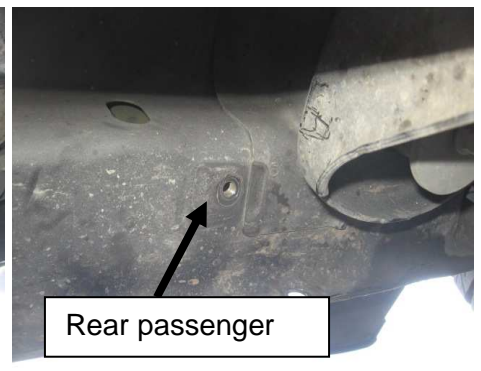
**Step 7:** Using the brackets as a guide on the underside of the vehicle, place nut clips in bottom of body tub. (Fig E, F, 4-Door shown) The rear bracket lines up with a pre-threaded hole, no nut clip needed. (Fig G) Secure with included hardware. Do not tighten completely.



(Fig E)



(Fig F)



(Fig G)

**Step 8:** With all bolts loosely attached proceed to tighten securely starting with the pinch weld bolts. Repeat steps for opposite side. Installation is now complete.



## Installation Instructions

### Nerf Steps

07-14 JK 2 & 4 Door

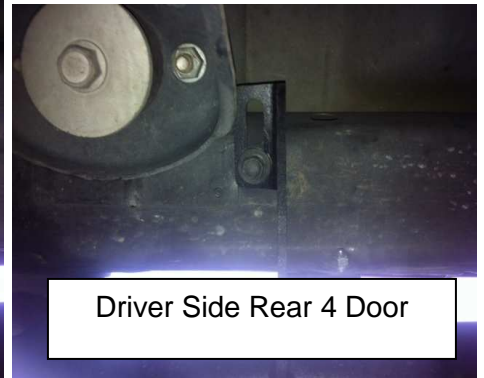
Part # J0746, J0764, J1246



Driver Side Front 4 Door



Driver Side Middle 4 door

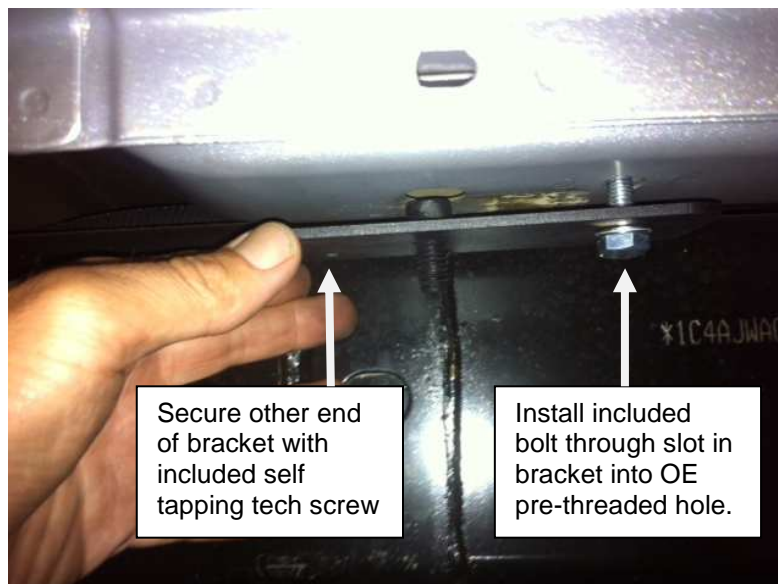


Driver Side Rear 4 Door

### 2012-2014 2-Door Models Rear Bracket Part #J1246

The rear bracket on newer 2 door models do not line up to a hole on the underneath portion of the body. Install the included adapter plates to install nerf steps.

**Step A:** Place the adapter bracket on the bottom of body, the bend on the bracket will go inward on one side and outward on the other. Line the slot in the bracket with the OEM pre-threaded hole and secure with included bolt. Secure the opposite end of the bracket with the included tek screw. (Fig H, J) Before tightening completely make sure rear bracket on Nerf step will line up with threaded stud on bracket. (Fig J)



Secure other end of bracket with included self tapping tech screw

Install included bolt through slot in bracket into OE pre-threaded hole.

(Fig H)

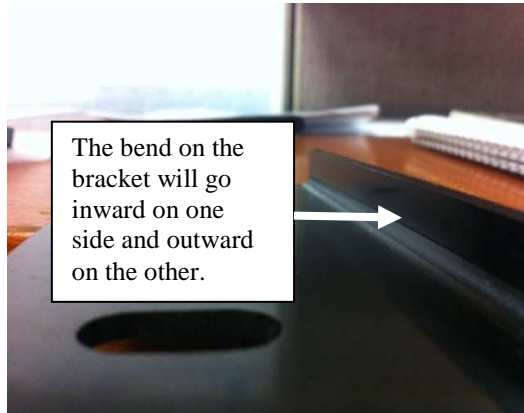


## ***Installation Instructions***

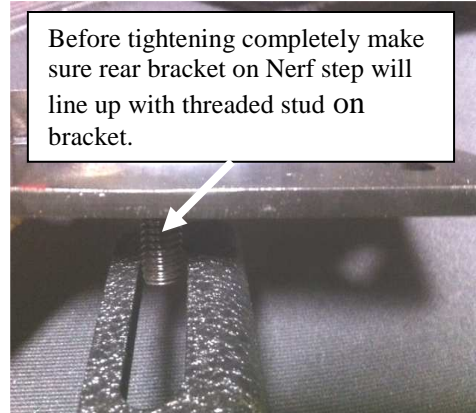
### **Nerf Steps**

07-14 JK 2 & 4 Door

Part # J0746, J0764, J1246



(Fig I)



(Fig J)

**Step B:** Place step to the side and proceed with above installation instructions starting at Step 3 above.

**Step C:** The rear bracket on the step attaches to the adapter plate you previously installed with the included 10mm hardware.

