



## Installation Instructions

C-RES (*Cargo Restraint System*)

07-10 Unlimited (4-Door)

Part #581035

Please read instructions entirely before installing this part

**NOTE:** You will need to have the following to install this part correctly.

1. Tailgate retaining bar and brackets.

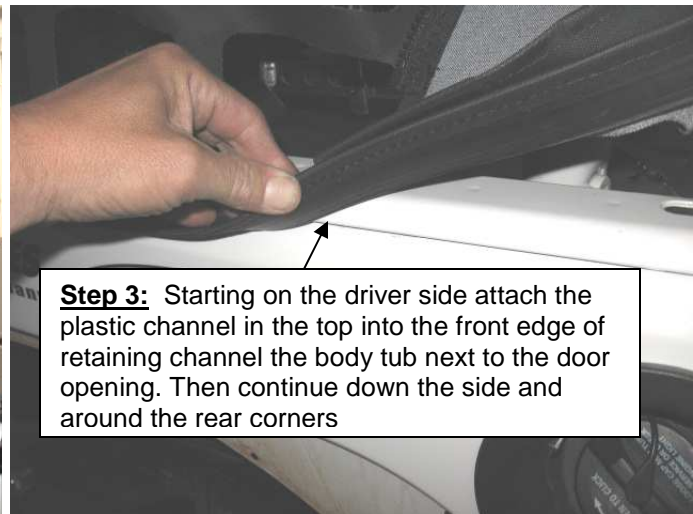
**Step 1:** *To avoid damage to your CRES It is recommended to remove your soft top to install this product.* Remove your existing soft top at this time (If equipped)

**Step 2:** Unfold the C-RES top and lay it out over the rear of the vehicle. (Fig A)

**Step 3:** Starting on the driver side attach the plastic channel in the top into the front edge of retaining channel the body tub next to the door opening. Then continue down the side and around the rear corners. (Fig B) Repeat on the passenger side. If installing with the OEM door surrounds continue to Step 4, if you are installing without the proceed to Step 9.



(Fig A)



(Fig B)

**Step 4:** Begin inserting the plastic channel in the top into the vertical part of the door surround on the driver side. (Fig C)



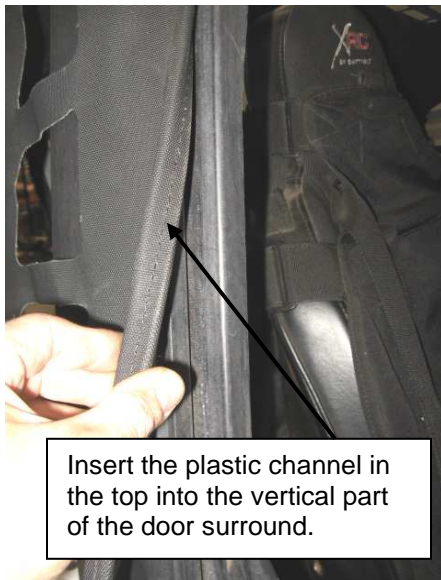
## Installation Instructions

C-RES (Cargo Restraint System)

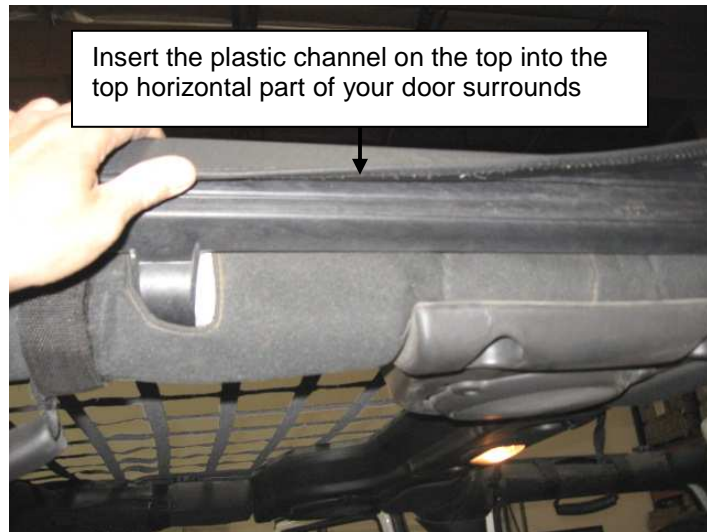
07-10 Unlimited (4-Door)

Part #581035

**Step 5:** Now insert the plastic channel on the top into the top horizontal part of your door surrounds. (Fig D) Repeat step 4 and 5 on the passenger side now.



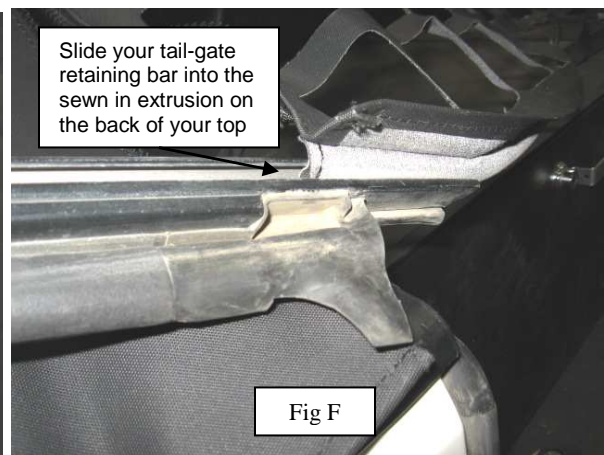
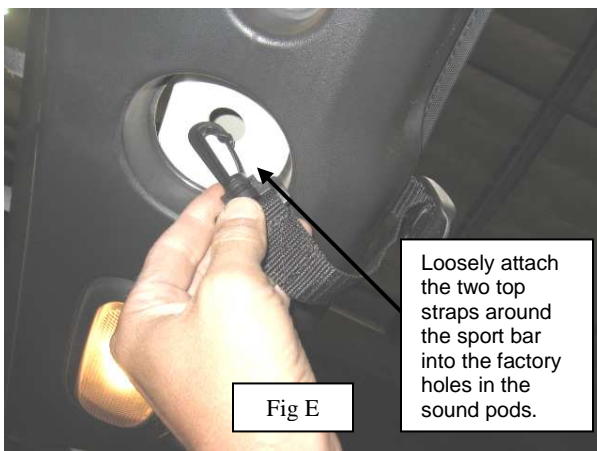
(Fig C)



(Fig D)

**Step 6:** Loosely attach the two top straps around the sport bar into the factory holes in the sound pods. (Fig E)

**Step 7:** Slide your tail-gate retaining bar into the sewn in extrusion on the back of your top (Fig F) Once all the way on lock the bar into the brackets (Fig G)





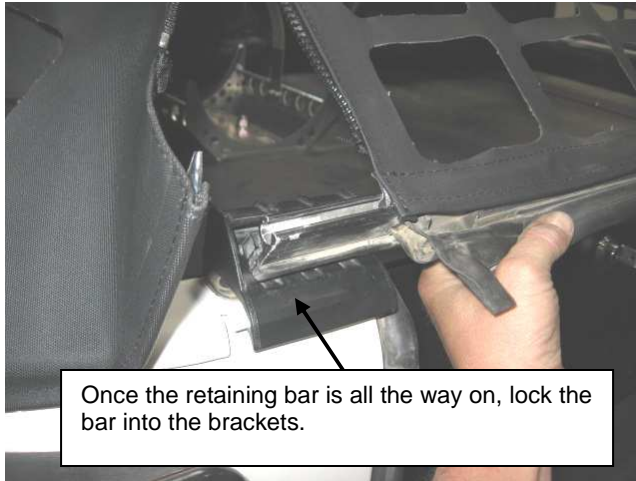
## Installation Instructions

*C-RES (Cargo Restraint System)*

07-10 Unlimited (4-Door)

Part #581035

**Step 8:** Now pull the straps around the sport bar securely. Installation is now complete. The C-RES can be used in conjunction with briefs and extended tops. Simply maneuver the straps on the briefs through the holes on the C-RES in the best location. Installation is now complete. (Fig H)



(Fig G)



(Fig H)

**Step 9:** Wrap the center side straps around the sport bar and secure with buckle. (Fig I, K)

**Step 10:** Wrap the side corner straps around the sport bar and secure with buckle (Fig J, K)

**Step 11:** Slide the front corner straps around the roll bar and back to the buckle, secure snugly. (Fig L) Now, finish installation by going through steps 6-8



(Fig I)



(Fig J)



## Installation Instructions

*C-RES (Cargo Restraint System)*

07-10 Unlimited (4-Door)

Part #581035



(Fig K)



(Fig L)