



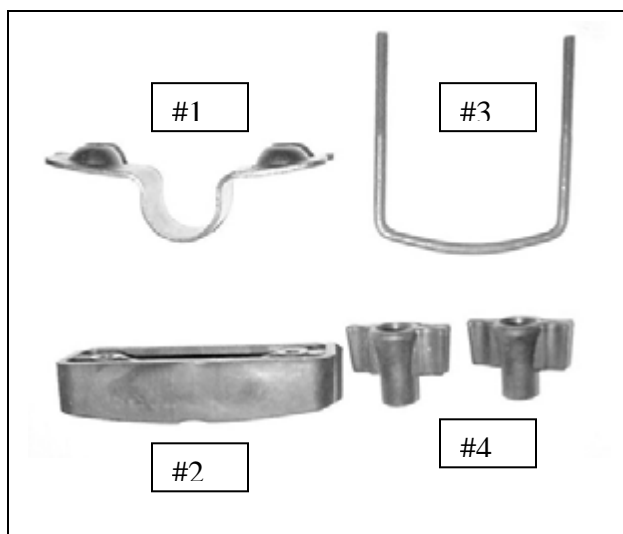
Installation Instructions

Rugged Rack

Part # 17185

NOTE: Carefully read entire instructions thoroughly before attempting to install this part.

Rugged Rack Assembling Components		Mounting Foot Hardware	
Description	Qty.	Description	Qty.
Floor slat attachment screws	25 ea.	#1. Upper Cross Bar Bracket	4 ea.
Assembly screws	8 ea.	#2. Center Cross Bar Bracket	4 ea.
Side uprights	2 ea.	#3. Lower Cross Bar Bracket	4 ea.
Front and rear uprights	2 ea.	#4. Wing Nuts	8 ea.
Floor slats	5 ea.		
Cross Members	5 ea.		



ASSEMBLING THE RACK

Step 1: On a clean smooth surface lay out the parts. (Figure 1)

Step 2: Begin the assembly process by sliding the cross member tube into the holes on the side of the uprights. (Figure 2) Be sure to turn the cross members so that the threaded holes are facing up. (Figure 3)



Installation Instructions

Rugged Rack

Part # 17185



(Figure 1)



(Figure 2)

Step 3: Push the front upright into the side upright. (Figure 4) Do this step at all four corners.

Note: It may be necessary to use a rubber mallet to carefully tap parts together.



(Figure 3)



(Figure 4)

Step 4: Lay the floor flat slats out over the cross members. Align the holes in the floor slats with the holes on the cross members. (Figure 5)

Step 5: Attach the floor slats to the cross members using the screws provided. (Figure 6)



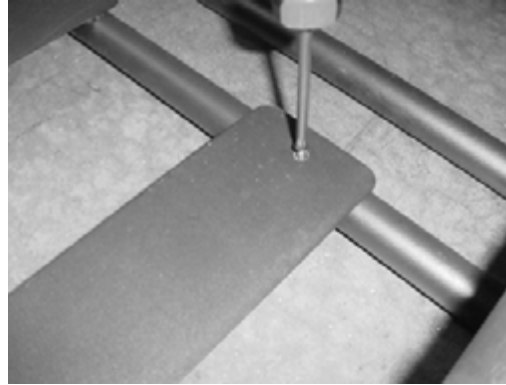
Installation Instructions

Rugged Rack

Part # 17185

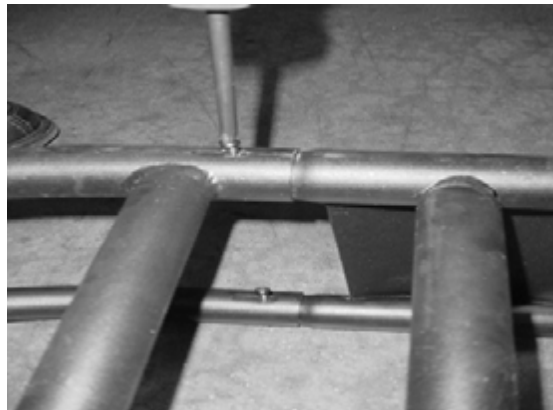


(Figure 5)



(Figure 6)

Step 6: With care, turn the rack upside down. Align the slots in the front upright with the holes in the side upright. Attach the parts using the screws provided. (Figure 7)



(Figure 7)

ATTACHING THE RUGGED RACK TO VEHICLE ROOF RACK

Note: The Rugged Rack comes complete with installation hardware. To attach the Rack your vehicle must be equipped with a roof rack and cross rails.

Step 1: Loosen the vehicles factory cross rails and move them to the furthest outside position. Place the assembled Rack onto the vehicles cross members (Figure 1)

Step 2: Align the vehicles roof rack cross rails with the outside cross member of the Rack. (Figure 2)



Installation Instructions

Rugged Rack

Part # 17185

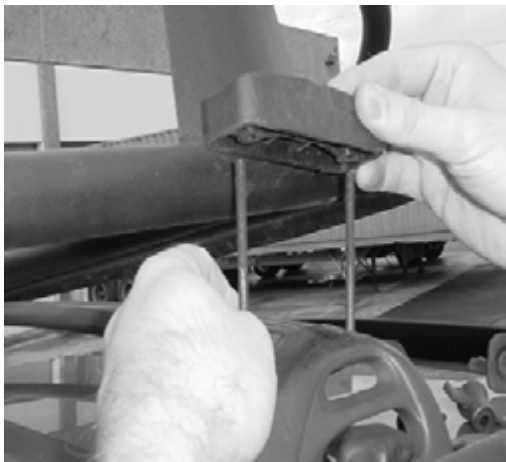


(Figure 1)



(Figure 2)

Step 3: Place the lower cross bar bracket under the vehicle roof rack cross rail. Push the lower bracket through the holes in the center cross bar bracket. (Figure 3, 4)



(Figure 3)



(Figure 4)

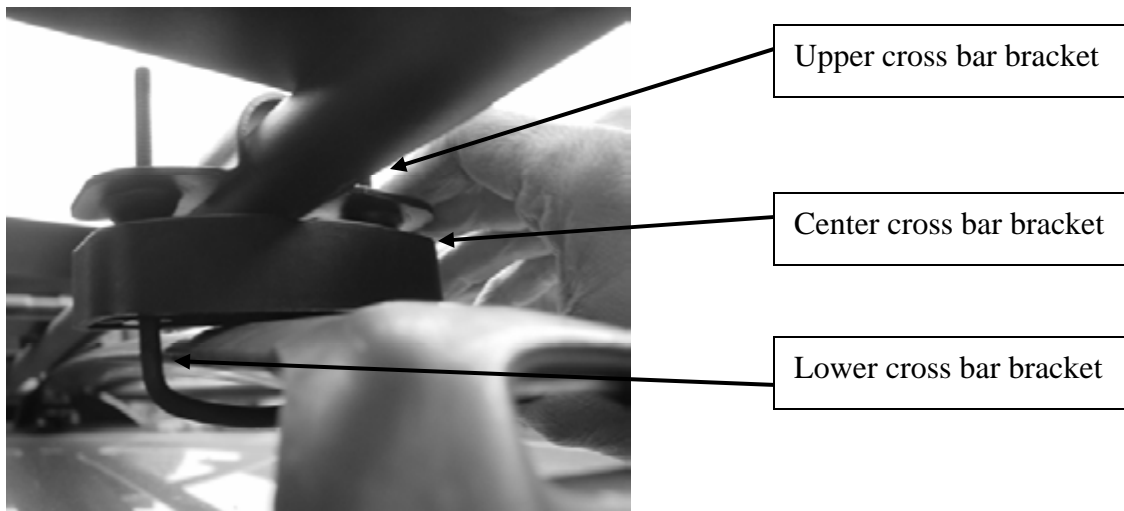
Step 4: Place the upper cross bar bracket over the Racks cross member and push down onto the lower cross bar bracket. (Figure 5)



Installation Instructions

Rugged Rack

Part # 17185



(Figure 5)

Step 5: Secure the Rack to the vehicle with the supplied wing nuts. (Figure 6,7)



(Figure 6)



(Figure 7)

Step 6: Make sure all hardware is tight. Installation is now complete.