



# Installation Instructions:

(Part # SB76921)

2007-2014

## Evap Canister Skid Plate Kit

**NOTE:** Carefully read entire instructions thoroughly before attempting to install this part.

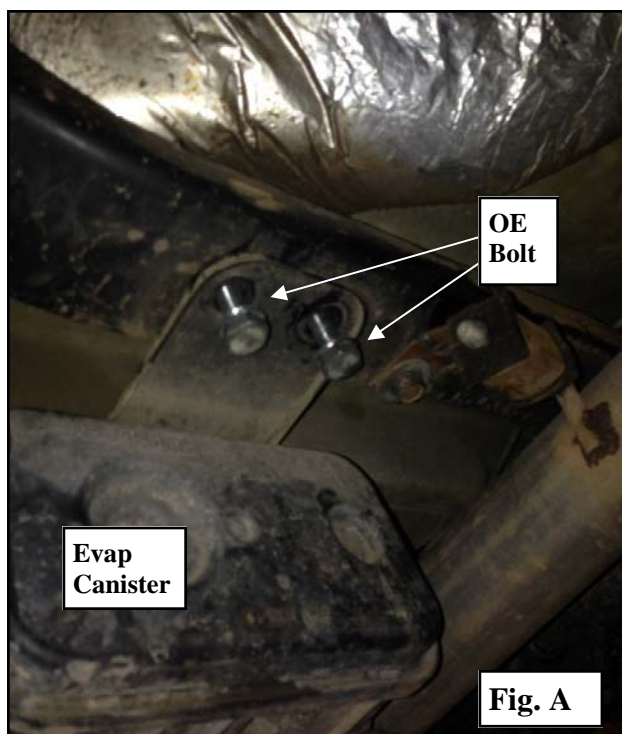
Parts Included	Qty
93-10035 Evap Canister Skid Plate: Lower	1
93-10036 Evap Canister Skid Plate: Upper	1
90-6339 Hardware Pack: Skid Plate	1
7/16"-14 X 1" Hex Bolt Gr. 8	2
7/16" SAE Flat Washer	2
7/16"-14 Stover Nut Gr. C	2
7/16" Hardened Flat Washer	2

### INSTALLATION:

**Step 1:** Place the vehicle on a flat, level surface and engage the parking brake.

**Step 2:** Remove the (2) front evap canister OE mounting bolts. Save the hardware for reinstallation. (Fig. A)

*NOTE: Do not remove the rear bolt at this time. Keep the rear bolt in place to secure evap canister in place during installation.*





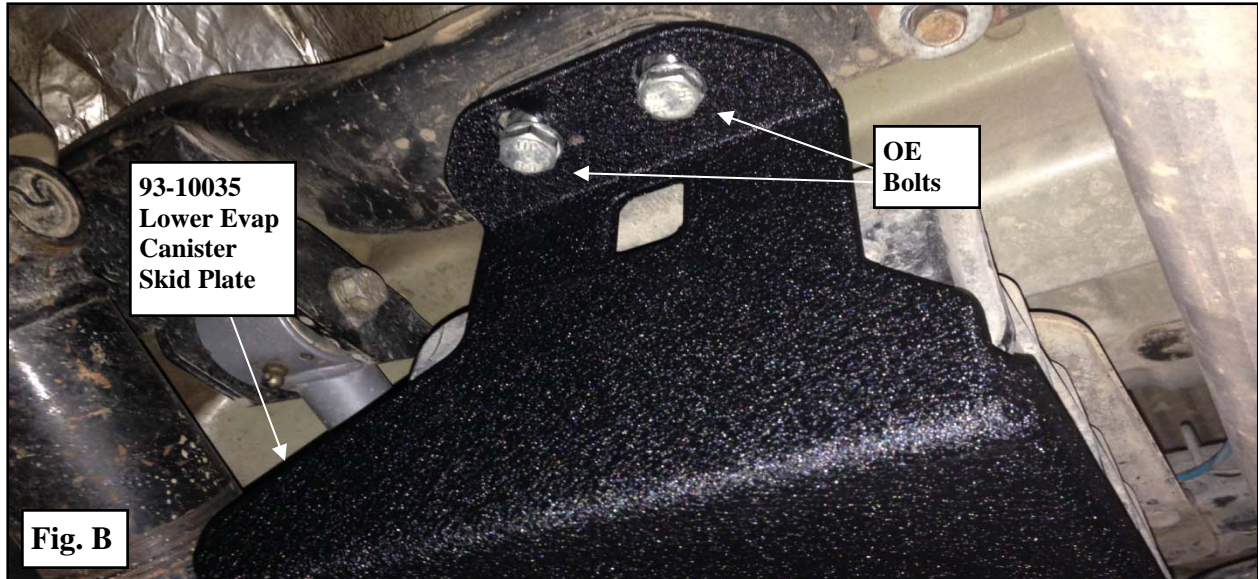
## Installation Instructions:

(Part # SB76921)

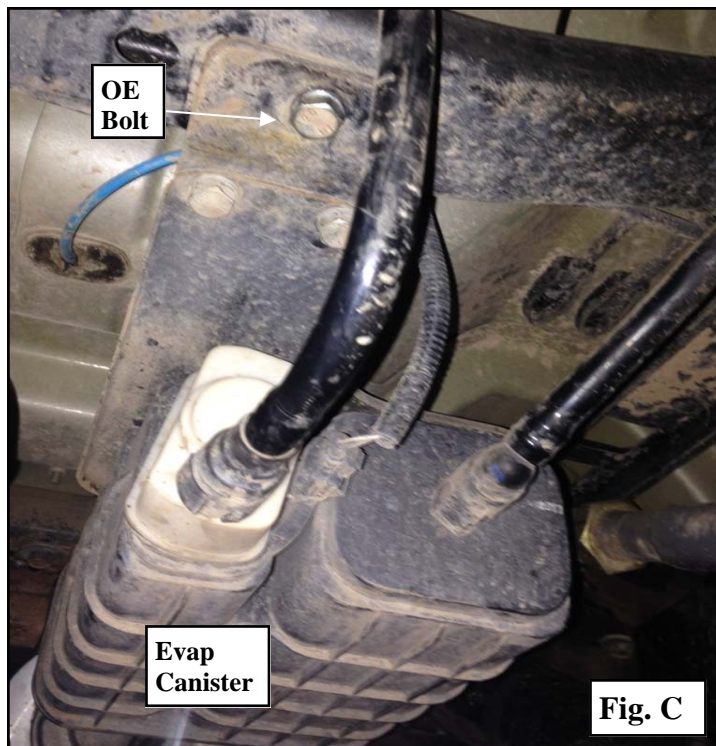
2007-2014

### Evap Canister Skid Plate Kit

**Step 3:** Install the lower evap canister skid plate (93-10035) using the (2) previously removed OE bolts. Do not tighten at this time. Leave the bolts loose to help align the upper evap canister skid plate (93-10036) mounting bolt. (Fig. B)



**Step 4:** Remove the rear canister OE mounting bolt. Save hardware for reinstallation. (Fig. C)







## Installation Instructions:

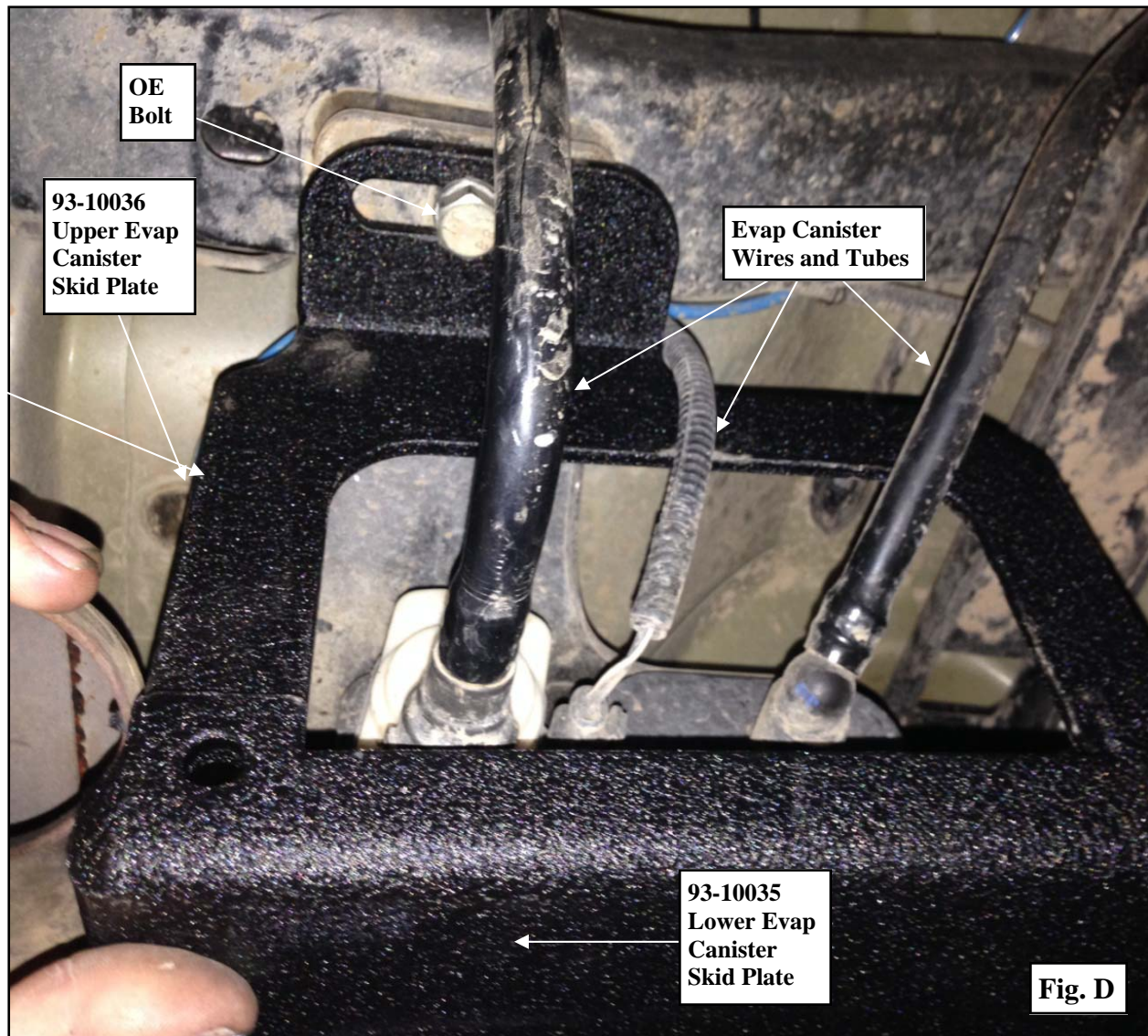
(Part # SB76921)

2007-2014

### Evap Canister Skid Plate Kit

**Step 5:** Install the upper evap canister skid plate (93-10036) using the previously removed OE rear bolt. (Fig. D)

**NOTE:** Be sure all evap canister tubes and wires are all routed securely inside the upper evap canister skid plate legs.



**Step 6:** Secure the lower evap canister skid plate (93-10035) and the upper skid plate (93-10036) together using the supplied 7/16" X 1" bolts and hardware. (Fig. E)

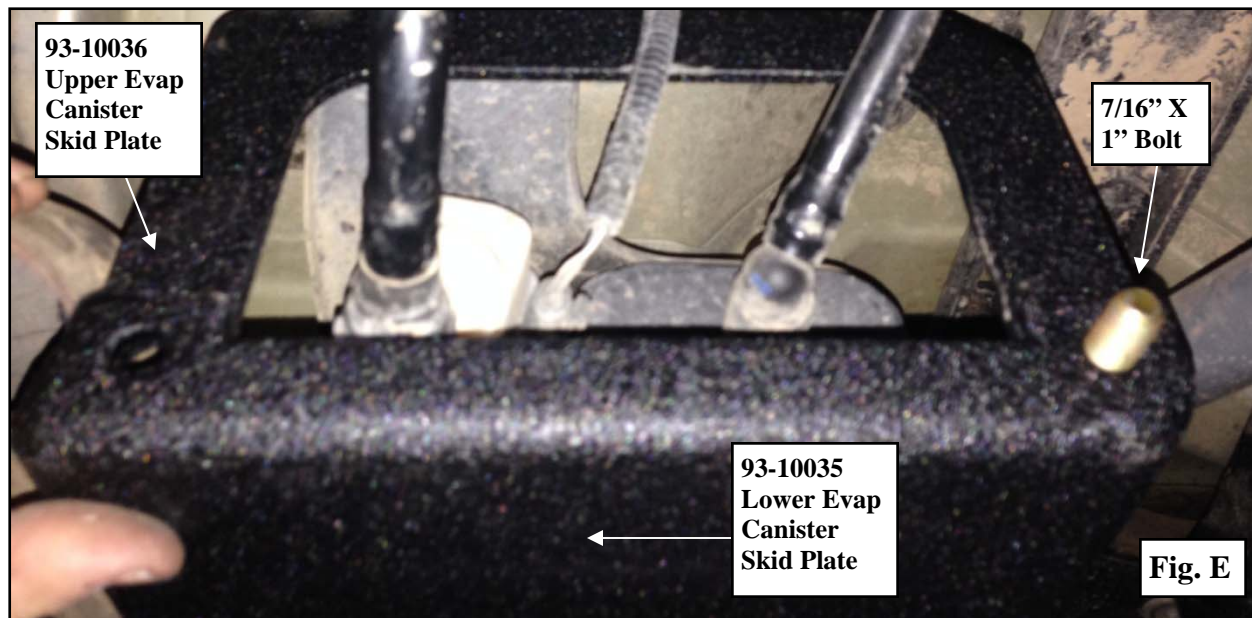


## Installation Instructions:

(Part # SB76921)

2007-2014

Evap Canister Skid Plate Kit



**Step 7:** Torque the OE evap canister skid plate hardware to manufacturer's specifications and the 7/16" hardware to 50 ft./lbs.

**Step 8:** Make sure all hoses and wiring **DO NOT** make contact with the evap canister skid plate assembly.

**Step 9:** Installation is now complete.



# Installation Instructions:

(Part # SB76921)

2007-2014

## Evap Canister Skid Plate Kit

Use this only as a guide for hardware without a called out torque specification in the instruction manual.

<b>Bolt Torque and ID</b>						
<b>Decimal System</b>			<b>Metric System</b>			
All Torques in Ft. Lbs. Maximums						
Bolt Size	Grade 5	Grade 8	Bolt Size	Class 9.8	Class 10.9	Class 12.9
5/16	15	20	M6	5	9	12
3/8	30	45	M8	18	23	27
7/16	45	60	M10	32	45	50
1/2	65	90	M12	55	75	90
9/16	95	130	M14	85	120	145
5/8	135	175	M16	130	165	210
3/4	185	280	M18	170	240	290

1/2-13x1.75 HHCS

Grade 5    Grade 8  
(No. of Marks + 2)

D T L X

G = Grade (Bolt Strength)  
D = Nominal Diameter (Inches)  
T = Thread Count (Threads per Inch)  
L = Length (Inches)  
X = Description (Hex Head Cap Screw)

M12-1.25x50 HHCS

P

D T L X

P = Property Class (Bolt Strength)  
D = Nominal Diameter (Millimeters)  
T = Thread Pitch (Thread Width, mm)  
L = Length (Millimeters)  
X = Description (Hex Head Cap Screw)