



Installation Instructions

Part # 7620
97-06 Jeep Wrangler
[XRC Foot Pegs](#)

Step 1: Push spring ends together opening the spring up. (Fig A)

Step 2: Slide spring over dome light switch pin. (Fig B)



(Fig A)



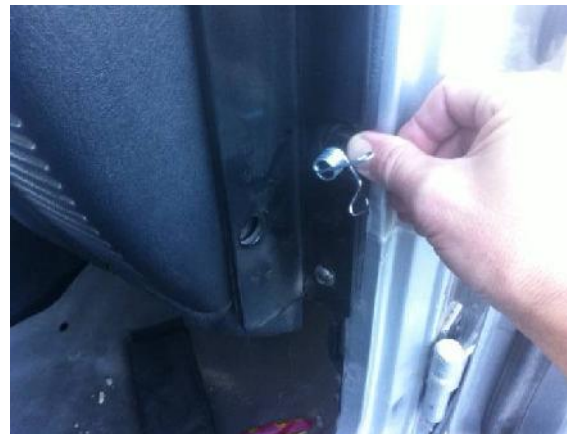
(Fig B)

Step 3: Push pin inward with spring open. (Fig C)

Step 4: Release spring ends. (Fig D) Installation is now complete.



(Fig C)



(Fig D)



Installation Instructions:

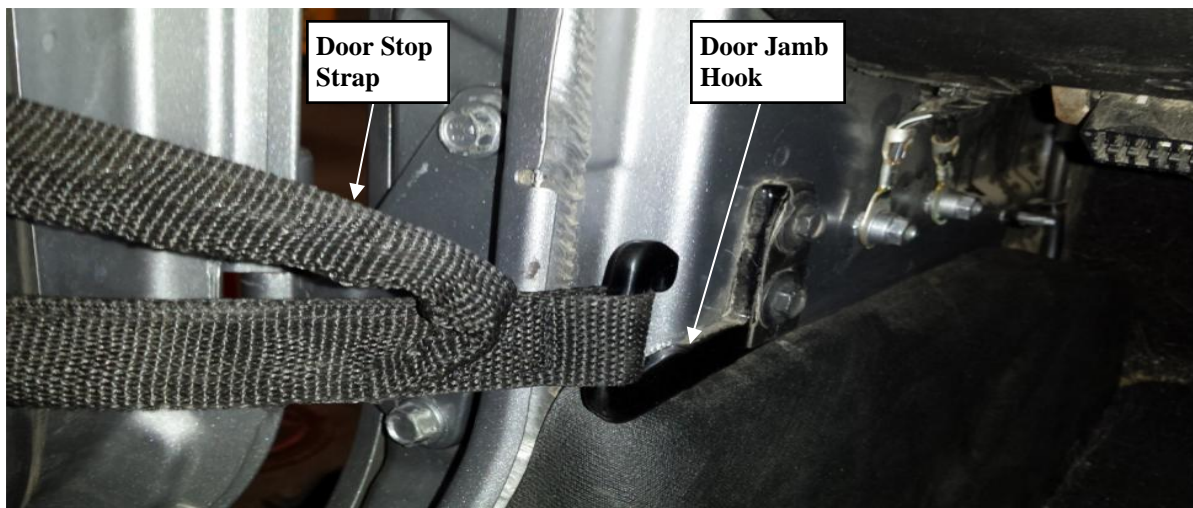
(Part # SB7619) 2007-2014 Jeep JK
 (Part # SB7620) 1997-2006 Jeep TJ
Foot Rest Kit

NOTE: Carefully read entire instructions thoroughly before attempting to install this part.

Parts Included	Qty	Parts Included	Qty
SB7619 JK: (Shown in Instructions)		SB7620 TJ:	
93-10038 Foot Rest: Drvr	1	93-10049 Foot Rest: Drvr	1
93-10041 Foot Rest: Pass	1	93-10052 Foot Rest: Pass	1
90-60011 Hardware Pack: End Plate	1	90-60012 Hardware Pack: End Plate	1
10mm-1.5 X 65mm HEX BOLT	2	8mm-1.25 X 60mm HEX BOLT	2
10mm Flat Washer	4	8mm Flat Washer	4
10mm-1.5 Nylock Nut	2	8mm -1.25 Nylock Nut	2
90-40022 Edge Trim	2	90-40022 Edge Trim	2

INSTALLATION:

Step 1: Working on one side of the vehicle at a time, remove the door stop by unhooking the strap at the hook located inside the door jamb. (Fig. A)



(Fig A)

Step 2: Unplug the door electrical plug, if equipped.

Step 3: Remove the door by removing the upper and lower door hinge bolts. Carefully lift the door upward while swinging the door slightly open and closed. (Fig. B)



Installation Instructions:

(Part # SB7619) 2007-2014 Jeep JK
(Part # SB7620) 1997-2006 Jeep TJ
Foot Rest Kit

(Fig B)



Step 4: Install the edge trim (90-40022) onto foot rest (JK: 93-10038 drvr and 93-10041, TJ: 93-10049 drvr and 93-10052). (Fig. C)



(Fig C)



Installation Instructions:

(Part # SB7619) 2007-2014 Jeep JK
(Part # SB7620) 1997-2006 Jeep TJ
Foot Rest Kit

Step 5: Install the foot rest (JK: 93-10038 drvr and 93-10041 or TJ: 93-10049 drvr and 93-10052) onto bottom hinge and secure using the supplied JK: 10mm x 65mm or TJ: 8mm X 60mm bolt and hardware. (Fig. D)

NOTE: Make sure the foot rest edge trim is pressed firmly against the back-side of the door hinge.



(Fig D)

Step 6: Repeat steps for passengers side.



(Fig. E)

Step 7: Installation is now complete. (Fig. E)



Installation Instructions:

(Part # SB7619) 2007-2014 Jeep JK
 (Part # SB7620) 1997-2006 Jeep TJ
 Foot Rest Kit

Bolt Torque and ID						
Decimal System			Metric System			
All Torques in Ft. Lbs.						
Bolt Size	Grade 5	Grade 8	Bolt Size	Class 9.8	Class 10.9	Class 12.9
5/16	15	20	M6	5	9	12
3/8	30	45	M8	18	23	27
7/16	45	60	M10	32	45	50
1/2	65	90	M12	55	75	90
9/16	95	130	M14	85	120	145
5/8	135	175	M16	130	165	210
3/4	185	280	M18	170	240	290

<p>1/2-13x1.75 HHCS</p> <p>Grade 5 Grade 8 (No. of Marks + 2)</p> <p>D T L X</p>	<p>M12-1.25x50 HHCS</p> <p>D T L X</p>
--	--

<p>G = Grade (Bolt Strength)</p> <p>D = Nominal Diameter (Inches)</p> <p>T = Thread Count (Threads per Inch)</p> <p>L = Length (Inches)</p> <p>X = Description (Hex Head Cap Screw)</p>	<p>P = Property Class (Bolt Strength)</p> <p>D = Nominal Diameter (Millimeters)</p> <p>T = Thread Pitch (Thread Width, mm)</p> <p>L = Length (Millimeters)</p> <p>X = Description (Hex Head Cap Screw)</p>
---	--