

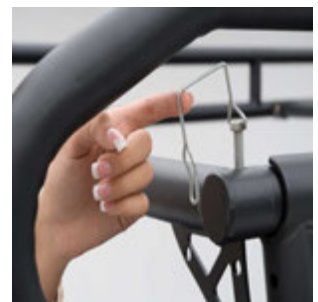


Installation Instructions

CONTRACTORS RACK

PART # 18604

NOTE: Please read this information entirely before installing. To obtain correct installation, we recommend you follow these step-by-step instructions carefully. Please take care when installing this product to protect the finish and your investment.





Installation Instructions

CONTRACTORS RACK

PART # 18604

IMPORTANT SAFETY PRECAUTIONS

- Make sure loads are always evenly distributed and balanced
- Do not carry or load rack with rear cross bar removed
- This rack is rated at 800lb capacity (evenly distributed)
- Randomly check to make sure all hardware is tight and secure.

Component List

ITEM #	QTY	DESCRIPTION
1	2	Front side rails
2	2	Rear side-rails
3	1	Front hoop bar
4	2	Front vertical uprights (P & D)
5	2	Rear vertical uprights (P & D)
6	1	Driver side front mounting plate
7	1	Driver side rear mounting plate
8	1	Passenger side front mount plate
9	1	Passenger side rear mount plate
10	1	Front Horizontal cross bar
11	1	Adjustable Center cross bar
12	1	Rear Horizontal cross bar

Hardware List

ITEM#	DESCRIPTION	SETS
(Each set includes 1 bolt, 2 flat washers, 1 lock washer, 1 nut)		
A	M10x70 bolt set (Center cross bar)	2
B	M12x90 bolt set	2
C	M12x65 bolt set	8
D	M10x70 bolt set	6
E	M8x45 bolt set (Center cross bar)	2
F	M18x90 bolt set	4
G	M12x40 bolt set	12
H	“J” Hook (with flat washer and nut)	8
I	Quick release pin	4

TOOLS REQUIRED

1. Adjustable Wrench
2. Ratchet/Socket Set
3. Tape Measure
4. Rubber Mallet/Hammer



Installation Instructions

CONTRACTORS RACK

PART # 18604



A



B



C



D



E



F



G



H



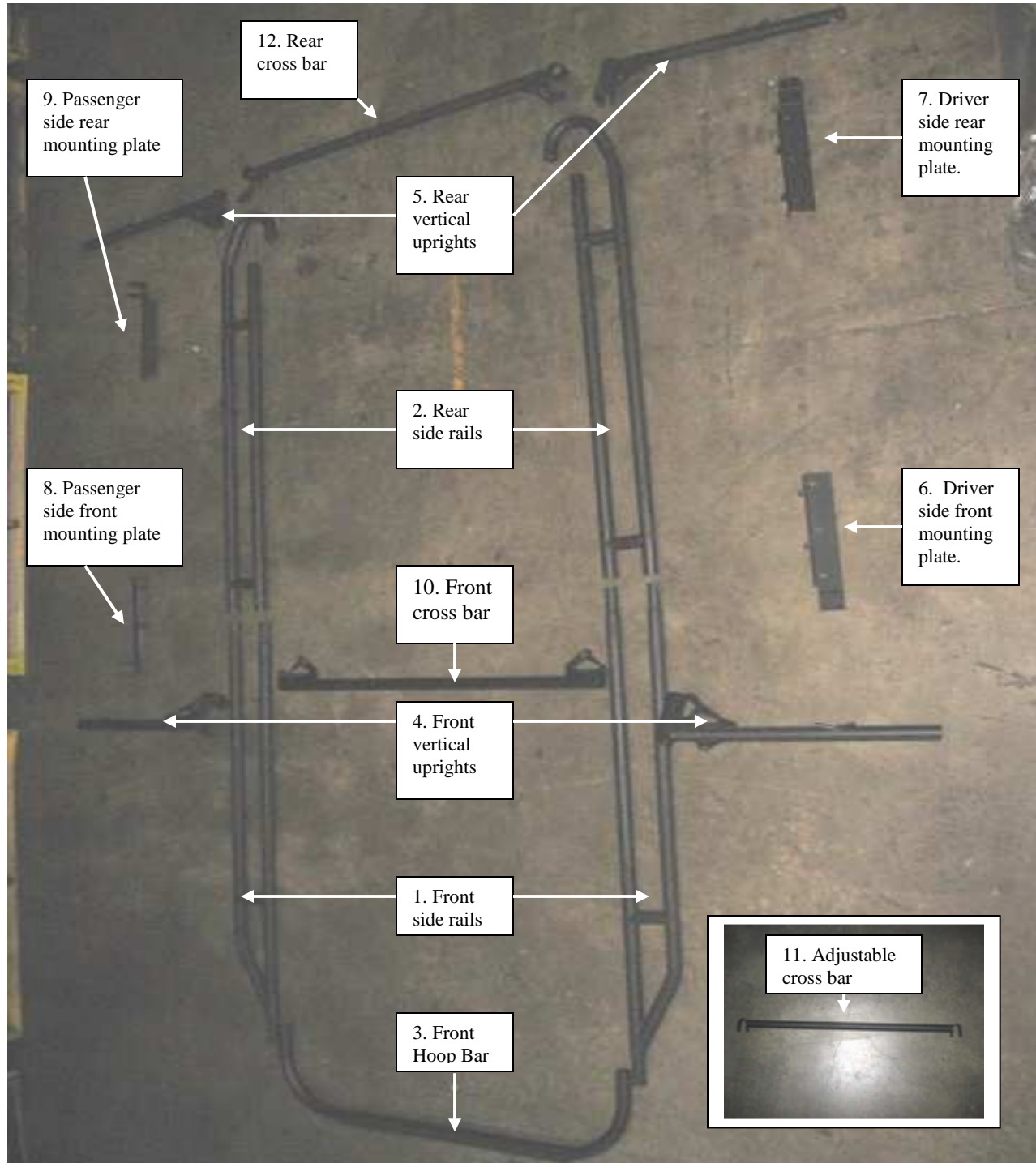
I



Installation Instructions

CONTRACTORS RACK

PART # 18604





Installation Instructions

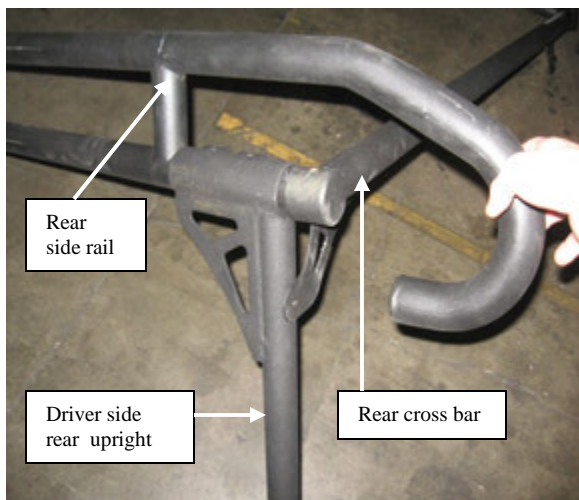
CONTRACTORS RACK

PART # 18604

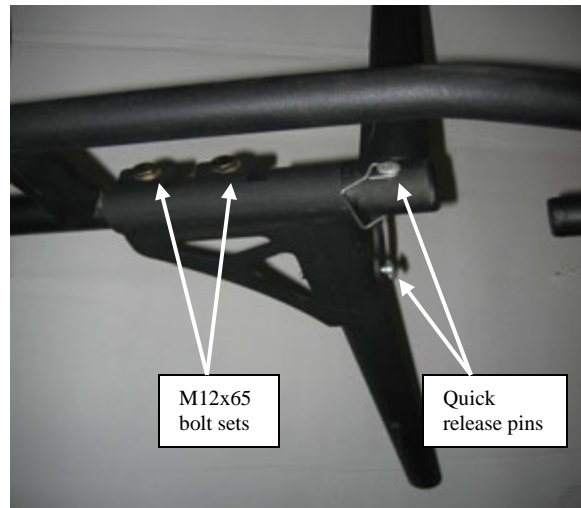
NOTE: It is recommended to have an assistant while assembling and installing this product.

REAR SECTION ASSEMBLY

STEP 1: Slide the rear driver side vertical upright (#5) onto the rear side rail (#2), then slide the rear cross bar (#12) over the end of the side rail. (Fig A)
Attach using the M12x65 bolts and two quick release pins. (Fig B) Tighten snug but not completely. Repeat same steps for rear passenger side. (Fig C)



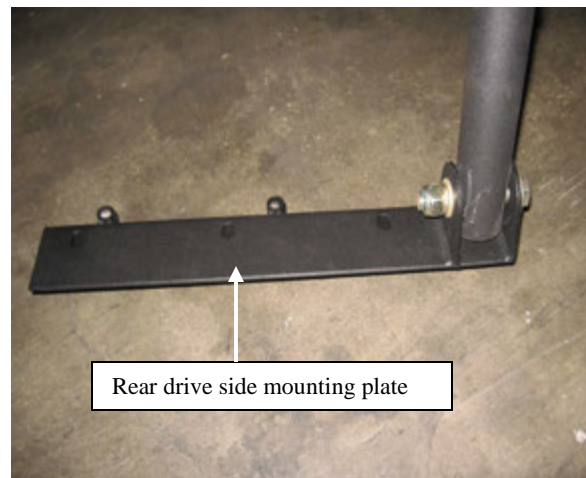
(Fig A)



(Fig B)



(Fig C)



(Fig D)

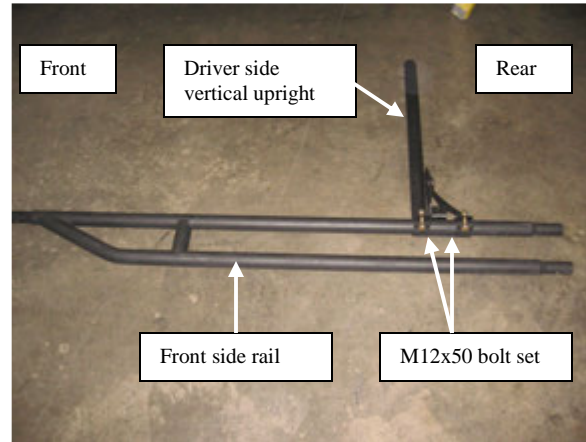


Installation Instructions *CONTRACTORS RACK* *PART # 18604*

STEP 2: Attach the driver side rear mounting plate (#6) to the bottom of the upright using one M18x90 bolt set. (Fig D) (**NOTE:** The driver side front and passenger side rear mounting plates are the same, as is the passenger side front and driver side rear) Tighten snug, but not completely. Repeat the same step for the rear passenger side. You are now down assembling the rear section (Fig E)



(Fig E)



(Fig F)

FRONT SECTION ASSEMBLY

STEP 3: Slide the driver side front upright (# 4D) over the bottom tube on the front side rail. (**NOTE:** The gusset supports on the front uprights will be facing towards the rear) Attach using two M12x50 bolt sets. (Fig F) Do not tighten completely. Repeat this for the opposite side using the passenger side front upright.

STEP 4: Slide the front driver side rail into the rear side rail. (**NOTE:** You may need assistance with this step. Secure the two side rails together with two M10x70 bolts.(Fig G,H) You may tighten completely. Repeat step for passenger side.

STEP 5: Attach the driver side mounting plate to the upright using one M18x90 bolt set. (Fig I) Repeat on passenger side. Do not tighten completely.

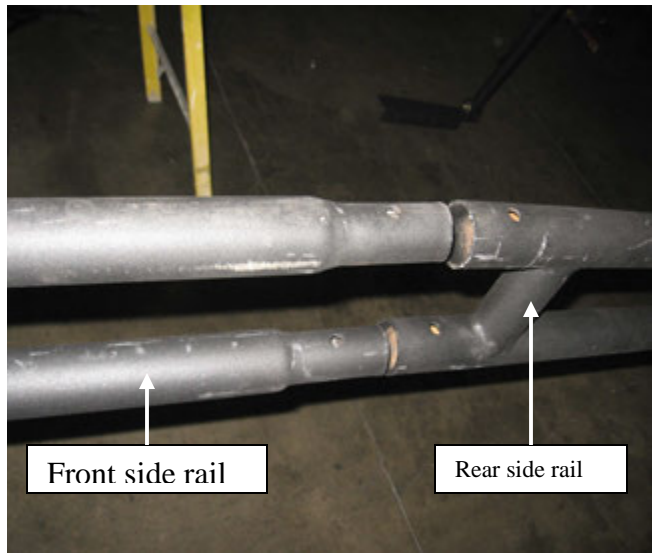
STEP 6: Install front cross bar to the two front uprights using two M8x45 bolt sets and two M10x70 bolt sets. (Fig J,K) Tighten snug but not completely.



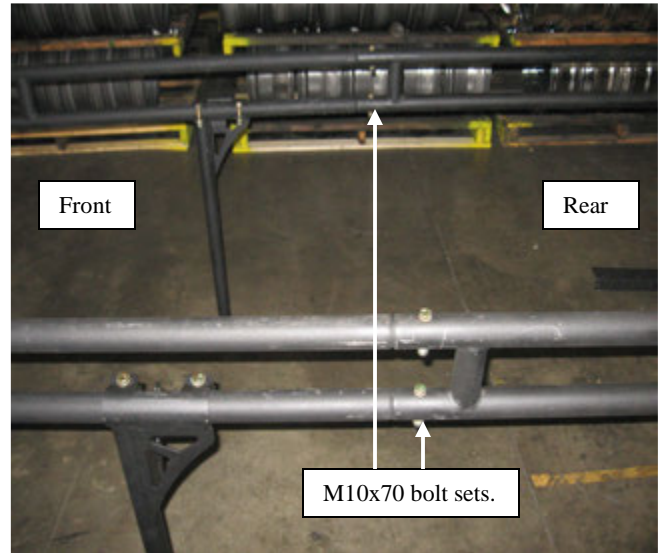
Installation Instructions

CONTRACTORS RACK

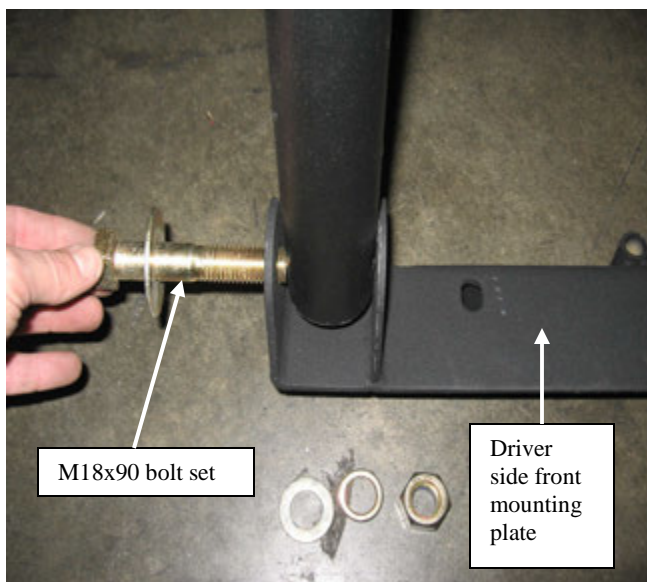
PART # 18604



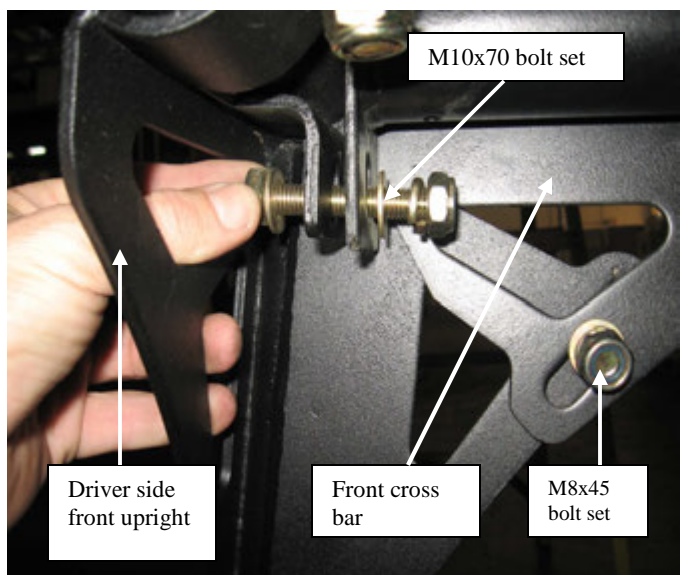
(Fig G)



(Fig H)



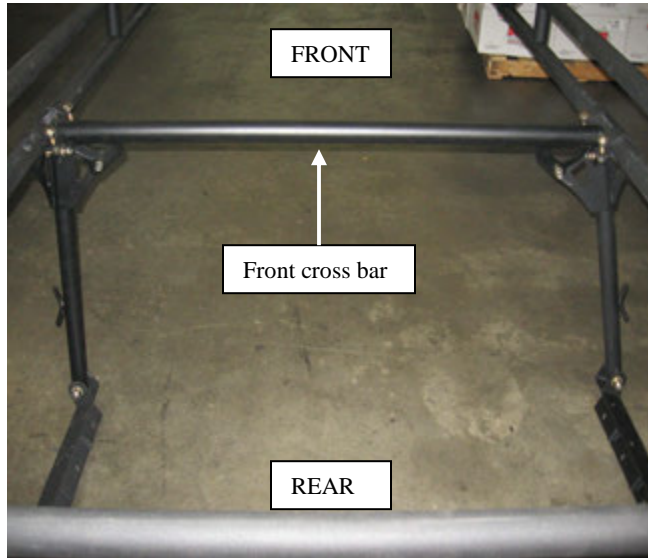
(Fig I)



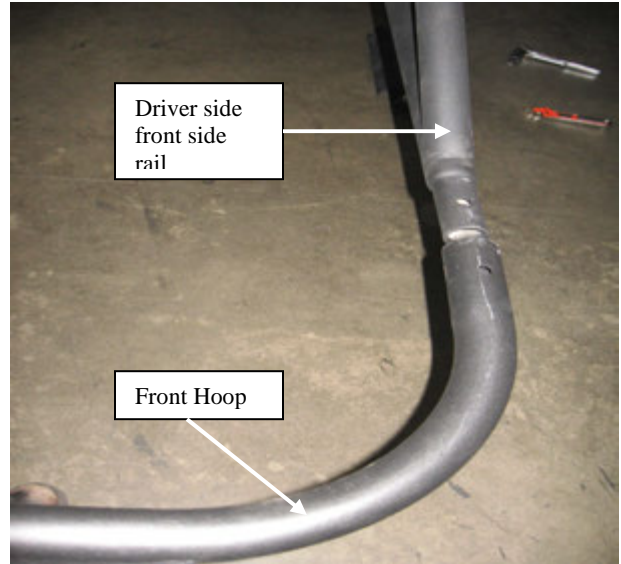
(Fig J)



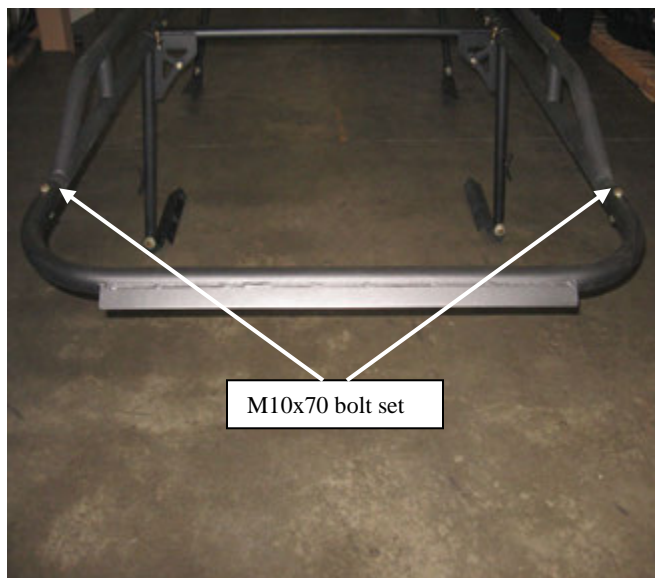
Installation Instructions *CONTRACTORS RACK* *PART # 18604*



(Fig K)



(Fig L)



(Fig M)



(Fig N)

STEP 7: Install the front hoop to the front side rails using M10x70 bolt set. (Fig L, M)
(Make sure the air deflector is pointing down.) You may tighten completely at this time

STEP 8: General assembly is now complete. It is time to size the rack now.



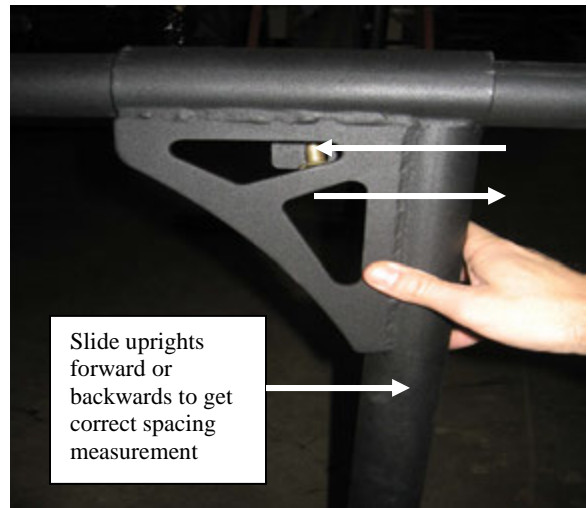
Installation Instructions CONTRACTORS RACK PART # 18604

INSTALLTION OF RACK

STEP 9: Measure the length of the top rail on your truck bed with the tailgate closed. Subtract 3 ½" from this measurement, this gives you the approximate spacing needed between the front and rear uprights. Adjust your front uprights by sliding them forward or backwards to match this measurement. (Fig O, P) Once position is correct tighten bolts snug, but not completely.



(Fig O)

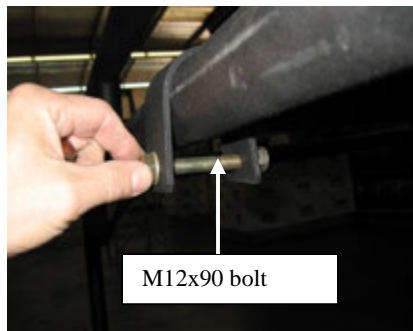


(Fig P)

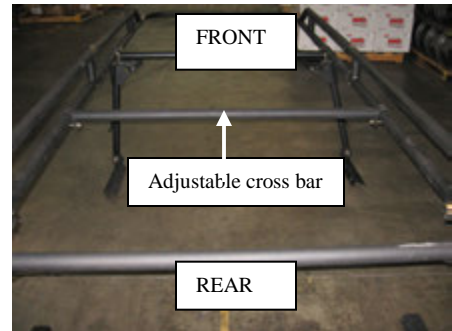
STEP 10: Place the adjustable cross bar (#11) in the desired location. This bar can always be moved around depending on the size and weight of your load. (Fig Q,R,S)
Attach using two M12x75 bolt sets. You may tighten completely at this time.



(Fig Q)



(Fig R)



(Fig S)



Installation Instructions

CONTRACTORS RACK

PART # 18604

NOTE: Take caution in the following steps in order to protect the finish of your rack and vehicle. The following steps will require the help of additional personnel.

STEP 11: Your rack is now ready to be installed on your vehicle.

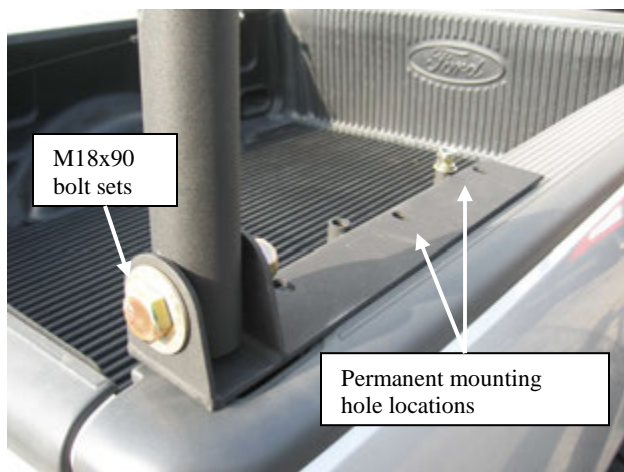
Carefully lift the rack onto the side bed rails of your vehicle aligning the mounting plates as close as possible to the corners of the bed rail. (Fig T)

The uprights and mounting plates can be adjusted while the rack is resting on the vehicle bed rail.

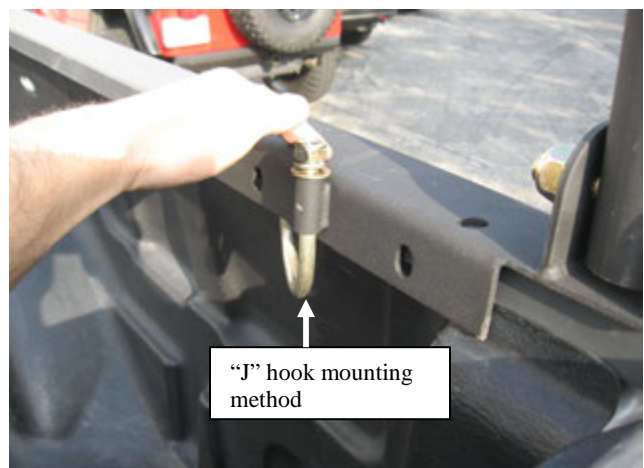
STEP 12: Once the desired location of the rack has been decided you can secure the mounting plates on the bed rail .This can be done two different ways, using (1) “J Hooks or (2) bolting it down.

1. Slide the “J” hook up through the sleeve in the mounting plate and secure with washer and nut. Make sure the plate on the end of the “J” hook is resting flush underneath the bed rail. (FigU)
2. Use the mounting plate as a template to mark and drill 7/16” holes through your bedrail. Be sure to check underside for any obstructions. Attach with M12x50 bolt sets.

Secure mounting plates to bed rail completely at this time.



(Fig T)

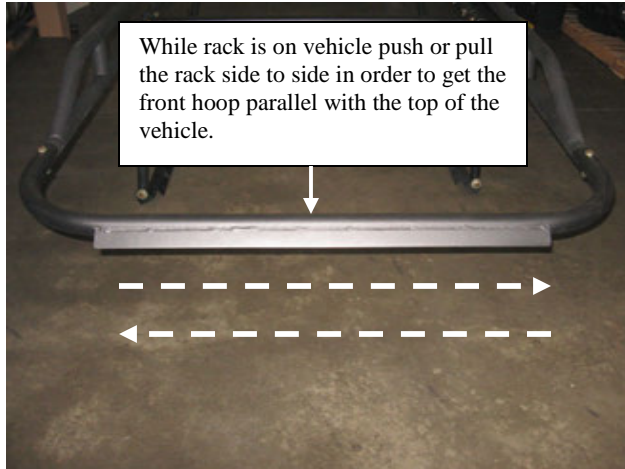


(Fig U)

STEP 13: Standing in front of the vehicle to check the horizontal alignment of the front hoop in relation to the top of the vehicle. Have an assistant push or pull the rack side to side in order to have the front hoop become parallel with the top of the vehicle (Fig V)



Installation Instructions *CONTRACTORS RACK* *PART # 18604*



(Fig V)



(Fig W)

STEP 14: When you are satisfied with the alignment of the rack proceed to securely tighten all four M18x19 bolts that hold the uprights to the mounting plates. (Fig T)
Now proceed to securely tighten the two M12x50 bolts that hold the uprights to the side rails. (8 total) (Fig B)

**CHECK TO MAKE SURE ALL HARDWARE IS COMPLETELY TIGHT AT THIS TIME.
INSTALLATION IS NOW COMPLETE**

NOTE: In order to load tall items you may remove the rear cross bar by simply removing the four quick release pins. (Fig W) Be sure to re-attach bar and fasten after loading.

DO NOT CARRY LOAD WITHOUT REAR CROSS BAR

CLEANING

To keep your rack finish looking good, you can simply wash with a soft rag and mild soap.