



Installation Instructions

Bowless Top

(Part #9973235 97-06 TJ)

(Part # 9083235 07-15 JK 4-Door)

(Part # 9073235JK 07-15 2-Door)

Note: Read instructions entirely before installing this product. It is recommended to install this product when temperatures are above 75 degrees. If temperatures are below this; the material can contract up to an inch. Wrinkles from packaging will go away once the material relaxes. Vehicle picture may vary from your actual vehicle.

NOTE: You will need to have the following to install this part correctly.

1. Windshield Header (Smittybilt Part #90104 TJ , # 90105 JK)
2. Tailgate retaining bar and brackets.
3. OE Door Surrounds

Step 1: Remove your hardtop or soft top and bow assembly. (If equipped).

Step 2: JK- Lay the center extended top section on a clean surface. Remove the knobs and latch Bracket from your header and then slide header into the front of the top. Connect the snaps on the top to the ones on the header. (Fig A, B)

TJ- Mount header on TJ windshield frame per header instructions.

Step 3: Lay the header on top of the windshield frame and spread top back over vehicle. (Fig C)



(Fig A)



(Fig B)



Installation Instructions

Bowless Top

(Part #9973235 97-06 TJ)

(Part # 9083235 07-15 JK 4-Door)

(Part # 9073235JK 07-15 2-Door)

Step 4: Reattach the brackets to the header using the knobs (JK) or clamps (TJ) previously removed and secure the header. (Fig D). TJ: Slide plastic channel into header. It helps to keep slight tension to keep it in place.



(Fig C)



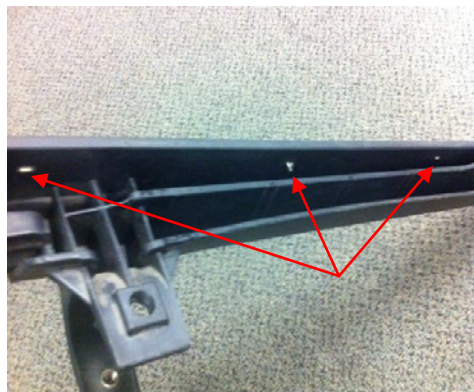
(Fig D)

(2010-2014 Models)

If you have a 2010-2014 model you will need to make a small modification to the door surrounds. To utilize the channel on the top part of the door surround you will need to remove the added extrusion on them by removing the staples that hold them on. FIG (E,F,G, AND H.)



(Fig E)



(Fig F)



(Fig G)



Installation Instructions

Bowless Top

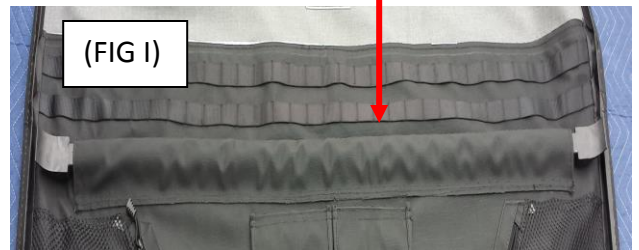
(Part #9973235 97-06 TJ)

(Part # 9083235 07-15 JK 4-Door)

(Part # 9073235JK 07-15 2-Door)



Step 5: Install front and rear cross bars into the sewn in channels. Longer crossbar goes in the front. The front cross bar will sit inside the door surround. FIG (I)



Step 6: Insert the plastic channel into door surrounds. Pull top towards rear of jeep to make the front part of the top over the doors smooth. FIG (J)

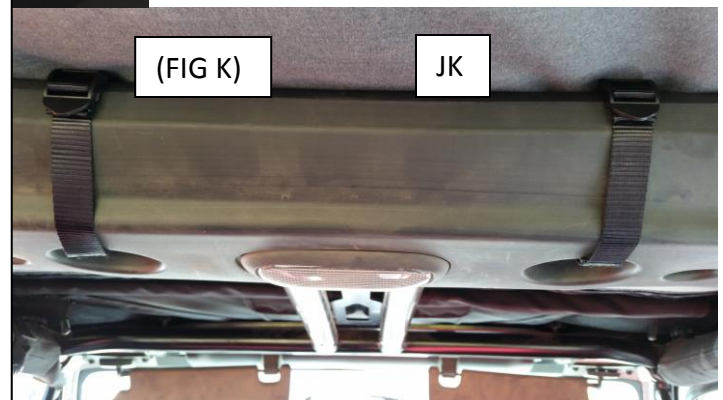


Step 7:

JK: wrap center straps around rear of roll bar and attach j-hook into opening in sound bar. FIG (K)

TJ: Wrap center strap around roll bar and thru footman loop on windshield. FIG (L)

Pull straps to tighten top. **DO NOT OVER TIGHTEN DO NOT USE TOOLS TO TIGHTEN.**





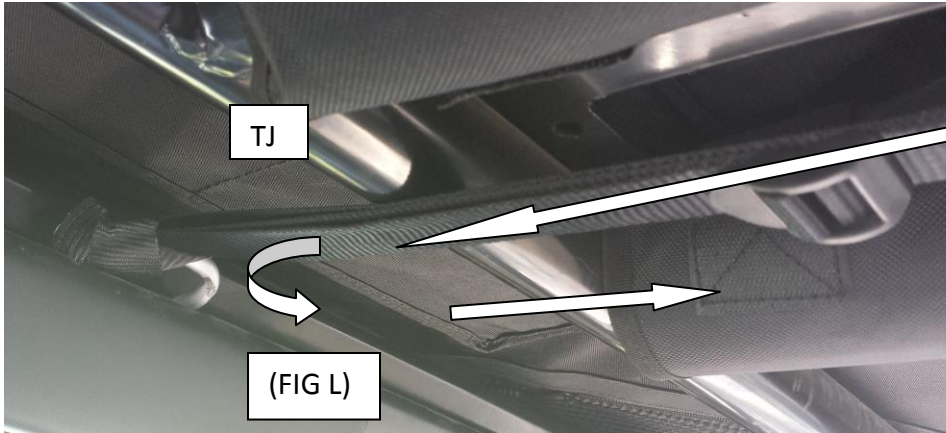
Installation Instructions

Bowless Top

(Part #9973235 97-06 TJ)

(Part # 9083235 07-15 JK 4-Door)

(Part # 9073235JK 07-15 2-Door)



Step 8: Pull top toward rear and attach seat belt straps around rear seat belt stud. Strap will go on inside of roll bar, around seat belt bolt and back out the outside of roll bar to the buckle. Tighten strap. FIG (M).

NOTE: Make sure strap does not interfere with seat belt operation.





Installation Instructions

Bowless Top

(Part #9973235 97-06 TJ)

(Part # 9083235 07-15 JK 4-Door)

(Part # 9073235JK 07-15 2-Door)

Step 9: Attach side windows by first zipping them on half way, then insert plastic channel into door surround. Leave bottom loose. FIG (N)

Step 10: Attach rear window to the 3 straps along the main top. Then loosely attach side window top strap. It will go over the rear window strap. FIG (O+P)



(FIG N)



(FIG O)



(FIG P)



Installation Instructions

Bowless Top

(Part #9973235 97-06 TJ)

(Part # 9083235 07-15 JK 4-Door)

(Part # 9073235JK 07-15 2-Door)

(FIG Q)



(FIG R)



(FIG S)



Step 11: Insert main top adjustable corner strap through the corner where side window and rear window meet. You will attach and tighten these once all components are in place. FIG (Q)



Installation Instructions

Bowless Top

(Part #9973235 97-06 TJ)

(Part # 9083235 07-15 JK 4-Door)

(Part # 9073235JK 07-15 2-Door)



Step 12: Attach rear window zipper to side window zipper. Zip half way down. Install your tailgate retaining bar onto rear window. FIG (T).

(FIG T)



Installation Instructions

Bowless Top

(Part #9973235 97-06 TJ)

(Part # 9083235 07-15 JK 4-Door)

(Part # 9073235JK 07-15 2-Door)

Step 13: Finish installing side windows into the belt rail, starting in front and working your way back. Stop and install tailgate bar into retainers before going around the rear corner. Then zip side windows on completely. Now clip the adjustable strap on onto the body tub next to the tail gate bar retainer and tighten. FIG (U). **DO NOT OVER TIGHTEN.** Next completely zip rear window.



Step 14: Close all Velcro enclosures. Installation of your new top is now complete!



Installation Instructions

Bowless Top

(Part #9973235 97-06 TJ)

(Part # 9083235 07-15 JK 4-Door)

(Part # 9073235JK 07-15 2-Door)



Care and Maintenance

-TOP, The top should only be washed with soap and warm water. Do not use an abrasive cleaner or rag. Especially on the windows. Do not wipe a dry window.

-SEAMS, if seeps happen to occur in seams they can be treated with a Scotch guard type of spray. Patches can also be applied

-ZIPPERS, Lube with a quality zipper lube. If zipper separates below the slider, it may have opened up slightly. Return zipper back to opening and squeeze the zipper with pliers. Your goal is to make the zipper slides parallel.



Installation Instructions

Bowless Top

(Part #9973235 97-06 TJ)

(Part # 9083235 07-15 JK 4-Door)

(Part # 9073235JK 07-15 2-Door)



Included with your bowless top is a window storage bag. The bag has Velcro to secure it under the main rear flap. Simply fill your bag with your windows and secure bag to the 3 Velcro locations. Then secure the main flap with the adjustable straps to the body tub.



Installation Instructions

Bowless Top

(Part #9973235 97-06 TJ)

(Part # 9083235 07-15 JK 4-Door)

(Part # 9073235JK 07-15 2-Door)





Installation Instructions

Bowless Top

(Part #9973235 97-06 TJ)

(Part # 9083235 07-15 JK 4-Door)

(Part # 9073235JK 07-15 2-Door)

