



87451 High angle tow bar adapter

Works in conjunction with
Smittybilt Tow bar part#87450

Hardware list:

High angle adapter	qty 2
Shackle spacer (short)	qty 2
Tow bar spacer (long)	qty 2
M12-1.75x70mm hex head bolt gr. 8.8	qty 2
M12-1.75x90mm hex head bolt gr. 8.8	qty 2
M12 flat washer	qty 8
M12-1.75 lock nut	qty 4

ALWAYS check
torque of
hardware and
inspect tow bar
and all towing
components
prior to towing.
DO NOT
exceeded towing
capacity.

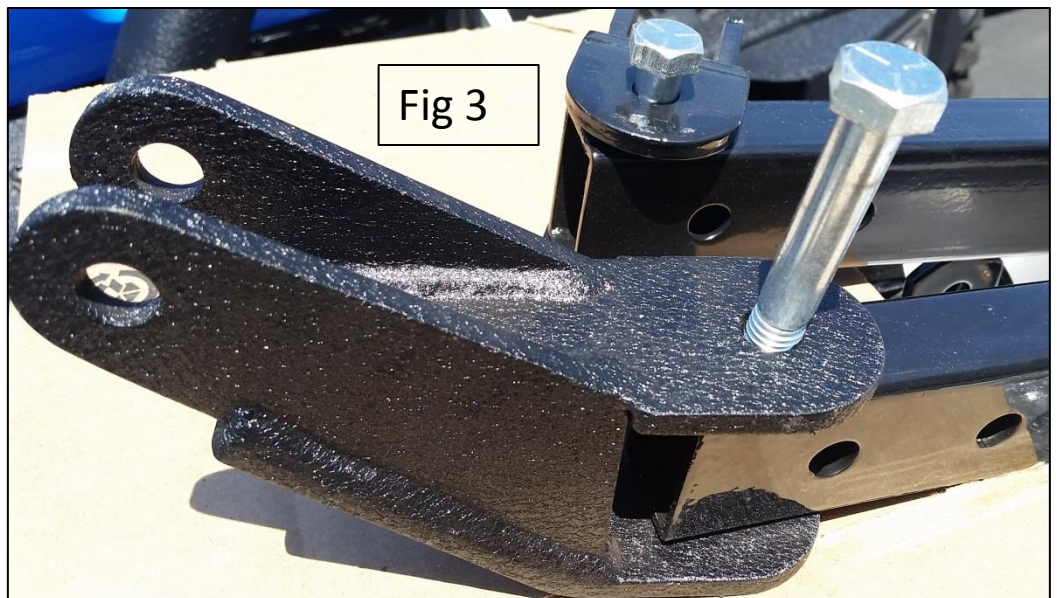
Step 1. Identify
and do an
inventory of all
parts and tools
needed for install.
Keep all parts
removed from
existing tow bar.



Step 2. Remove existing shackle/tow bar mounts. Inspect tow bar for damages.

Step 3. Insert tow bar sleeve into tow bar, align with first hole on the tow bar. If you are installing on a previously used tow bar, you may have to open up the tow bar or shave down the spacer if tow bar material has collapsed. Fig 2

Step 4. Attach shackle mount to tow bar using M12 bolts, flat washers and lock nut. Leave bolts loose till later. Brackets will point up when tow bar is on a flat surface. Fig 3



Step 5. Insert shackle spacer into shackle mount on bumper. Play is normal, if you wish you may use some tape on spacer to help it stay in place during the install of the tow bar. Fig 4



Step 6. Attach tow bar to bumper using Supplied M12 hardware or use ½" pull pin from existing tow bar hardware. Do not tighten hardware at this time. Fig 5



Step 7. Center tow bar and brackets on vehicle, then tighten all hardware. Check torque on all hardware and inspect tow bar before each used.



We recommend normal cleaning by using mild soap and water .(Taking into consideration your climate and driving time and conditions.)

Rely only on high-grade trailer hitches and towing offered on our virtual shelves.