



Atlas tire swing adjustment
Part#76896 +76851
2007-2016 Wrangler JK,
84-01 Cherokee XJ

The goal for adjusting the tire swing is to have the striker pin line up with the center of the latch while also having the latch in the highest position possible. If latch is set too low, it will be difficult to open the tire swing using the tire swing latch handle. Always use caution when adjusting tire swing, take care to avoid [bumper](#) to tire swing contact during setup. Use a piece of cardboard between swing and bumper for protection.

When adjusting tire swing, there are 3 adjustments that can be made. All 3 may need to be adjusted for the smoothest operation.

1. Cam wheel (used for major adjustments)
2. Latch
3. Striker pin

Step 1: Loosen latch, raise to highest position and snug bolts.

Step 2: Loosen striker pin and raise to the highest position and tighten striker pin.

Step 3: Adjust cam wheel so that latch lines up as close to center as possible with the striker pin. Tighten cam wheel bolt and re-install cam wheel retainer bolt.

Step 4: If everything lines up and operates smoothly, re-check torque on all fasteners and re-install cam cover if equipped.

Step 5A: If striker is slightly below the center of the latch, loosen latch bolts and re-align latch and tighten hardware. Re-check operation.

Step 5B: If striker is slightly above center of latch, loosen striker pin and align with center of latch. Tighten hardware and check operation.

Step 5C: If striker is centered on latch and is difficult to open tire swing.

1. Latch may be too close to striker pin. If putting pressure on the tire allows for the latch to operate easier, latch is too close to striker pin. Loosen latch and move away from striker pin.
2. Latch may be set too low, re-adjust striker, latch and cam so the latch will sit slight higher up.

NOTE: Periodically lube latch mechanism with Break-Free CLP or other high quality lube/protectant.



Atlas tire swing adjustment
Part#76896 +76851
2007-2016 Wrangler JK,
84-01 Cherokee XJ

For major adjustments of overall tire swing height adjust cam wheel by rotating it with 3/8" ratchet wrench or breaker bar.

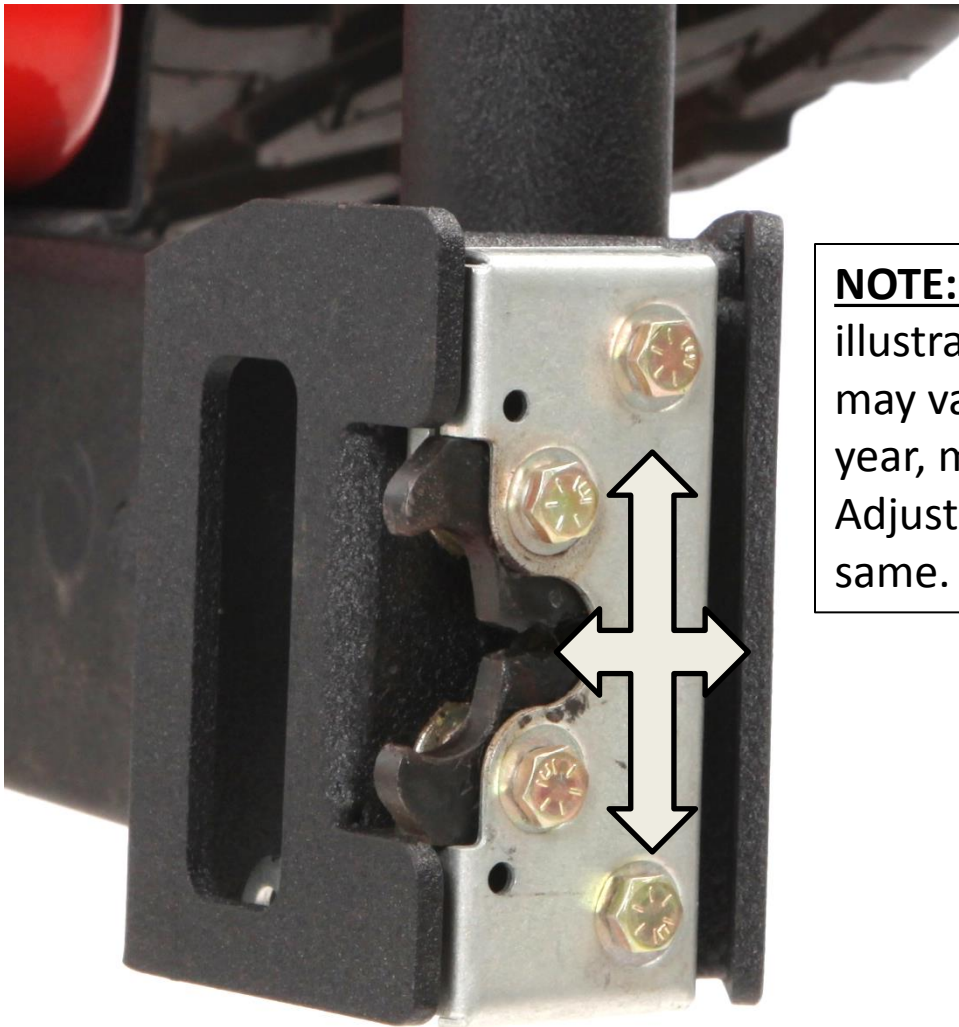
NOTE: Images are for illustration purposes and may vary depending on year, make, and model. Adjustment remains the same.





Atlas tire swing adjustment
Part#76896 +76851
2007-2016 Wrangler JK,
84-01 Cherokee XJ

Latch is adjustable in two dimensions. Up+ down and in+out.



NOTE: Images are for illustration purposes and may vary depending on year, make, and model. Adjustment remains the same.

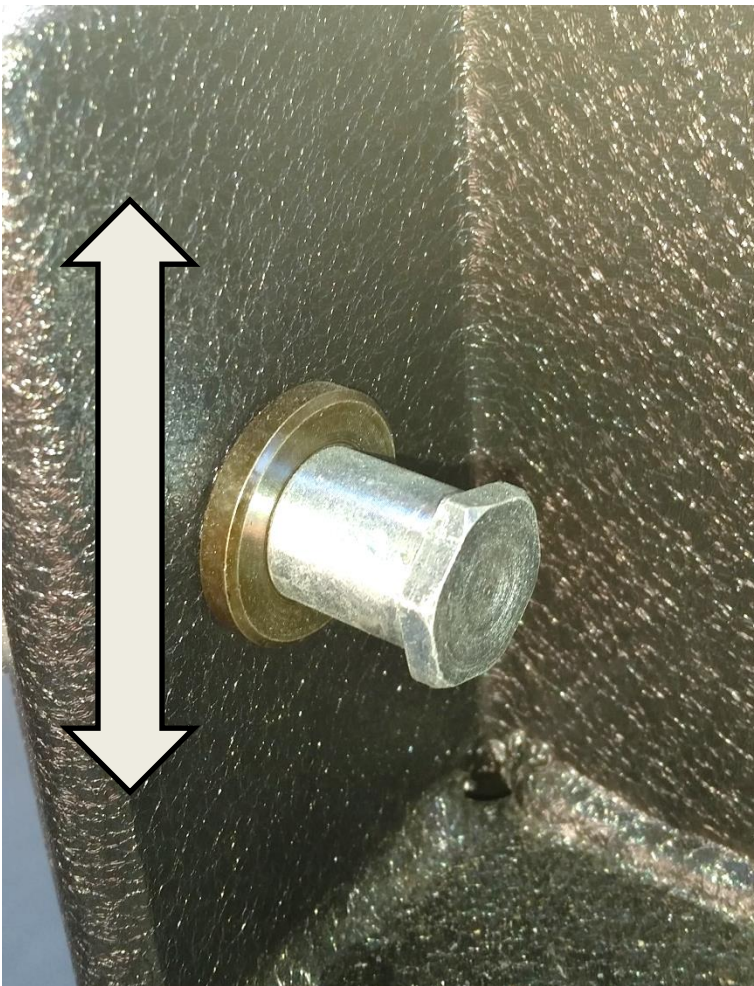


Atlas tire swing adjustment
Part#76896 +76851
2007-2016 Wrangler JK,
84-01 Cherokee XJ

Striker pin can be adjusted up and down for fine tuning.

Note: Always use Loctite on striker pin threads.

NOTE: Images are for illustration purposes and may vary depending on year, make, and model. Adjustment remains the same.

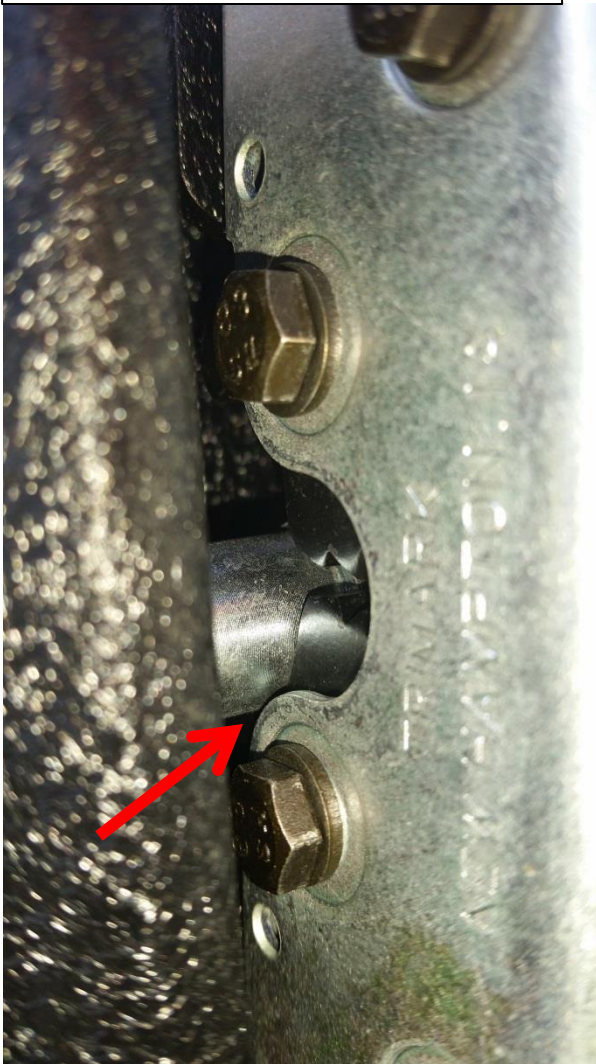




Atlas tire swing adjustment
Part#76896 +76851
2007-2016 Wrangler JK,
84-01 Cherokee XJ

NOTE: Images are for illustration purposes and may vary depending on year, make, and model. Adjustment remains the same.

Incorrect. Latch sitting too high. Center line of striker pin does not line up with center line of latch.



Correct. Center line of latch and striker pin line up.





Atlas tire swing adjustment
Part#76896 +76851
2007-2016 Wrangler JK,
84-01 Cherokee XJ

**Make sure end of striker pin does not contact tire swing.

**Make sure latch teeth sit on round part of striker pin.

**Adjust by adding or removing flat washer between striker pin and bumper.

NOTE: Images are for illustration purposes and may vary depending on year, make, and model. Adjustment remains the same.

Incorrect alignment

