

Cat-Back, 2011 Charger R/T (Loudmouth/Loudmouth II)

PACKING LIST

Before installation, use this check list to make sure all necessary parts have been included.

ITEM	QTY	CHECK	PART NUMBER	DESCRIPTION
1.	1	<input type="checkbox"/>	310570100	X-Pipe, Charger
2.	1	<input type="checkbox"/>	310570101	Tailpipe, D-Side, Charger
3.	1	<input type="checkbox"/>	310570102	Tailpipe, P-Side, Charger
4.	8	<input type="checkbox"/>	308144380	Clamps, Torca, 2.5"
5.	2	<input type="checkbox"/>	315815040	Tip, Charger, 2011
6.	2	<input type="checkbox"/>	310013818	Muffler, Bullet, GTO/Mustang/Charger
			Or 310013919	Or Resonator, Bullet, GTO/Mustang/Charger
7.		<input type="checkbox"/>	*****	Instructions

WARNING: SLP Recommends allowing the vehicle to cool (not running) for five hours before beginning installation.

INSTALLATION INSTRUCTIONS – #D31040/D31041

- 1 Raise and fully support the vehicle (a vehicle lift is recommended).
- 2 Loosen the two band clamps on the stock cat-back as in figure 1 below.

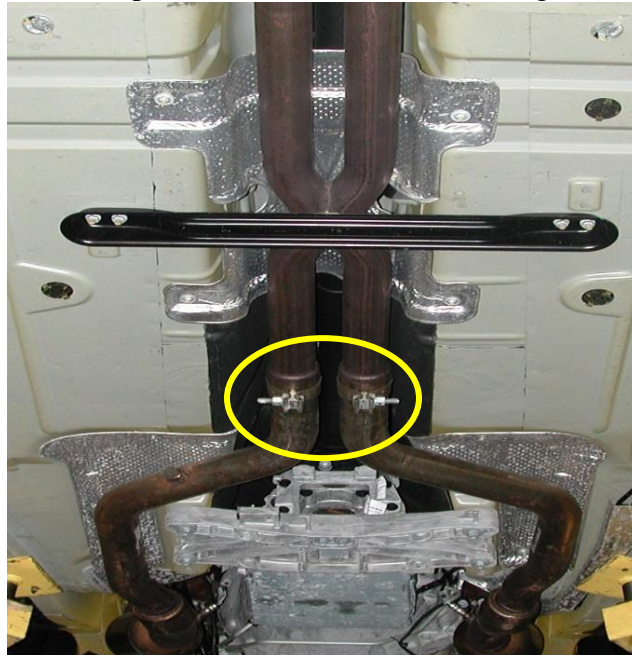


Figure 1: Loosen clamps

- 3 Next remove the two nuts with springs attached on the driver's side stock muffler assembly. See figure 2 below.

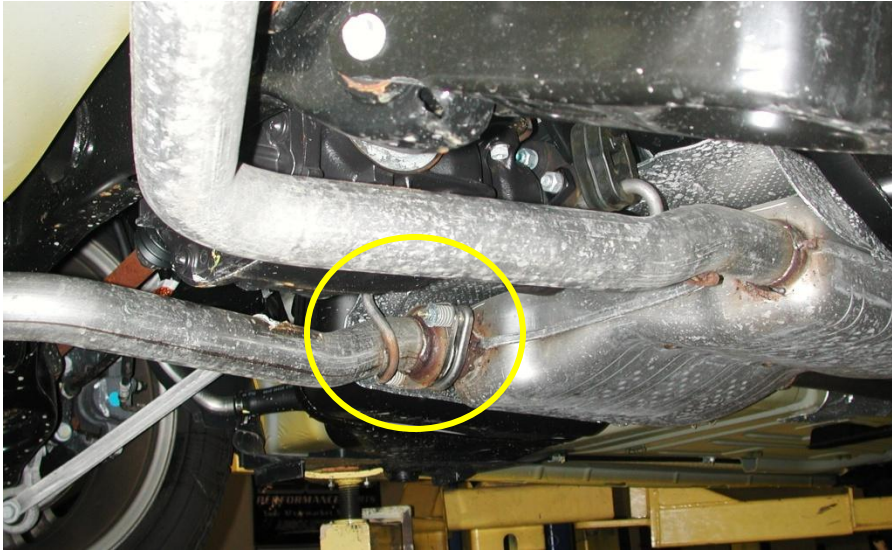


Figure 2: Driver's side nut removal

- 4 Carefully remove the rear driver's side muffler assembly from the vehicle by sliding the rubber isolators off the hangers attached to the assembly.
- 5 Next, with the aid of a helper remove the remaining stock exhaust system as one piece. Removing all remaining rubber isolators from the stock exhaust system and carefully sliding the exhaust off of the stock CAT down-pipes.
- 6 Next install two 2 1/2" torca clamps onto the outlet of the new SLP X-Pipe.
- 7 Slide the SLP X-pipe onto the outlets of the stock CAT down-pipes. See figure 3 below.

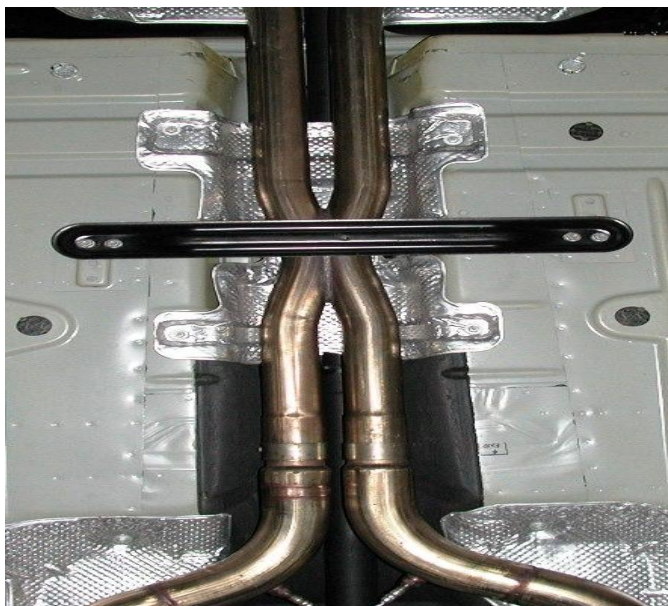


Figure 3: SLP X-pipe on factory downpipes

- 8 Next install the new SLP resonators or bullet mufflers onto the outlet of the SLP X-Pipe using two of the supplies 2.5" torca clamps.
- 9 Next install the SLP driver's side and passenger's side tailpipe onto the outlet of the X-Pipe. Hang the pipes using the stock rubber isolators as shown in figures 4, 5, and 6 below and on the following page.



Figure 4: Hanging of tailpipes

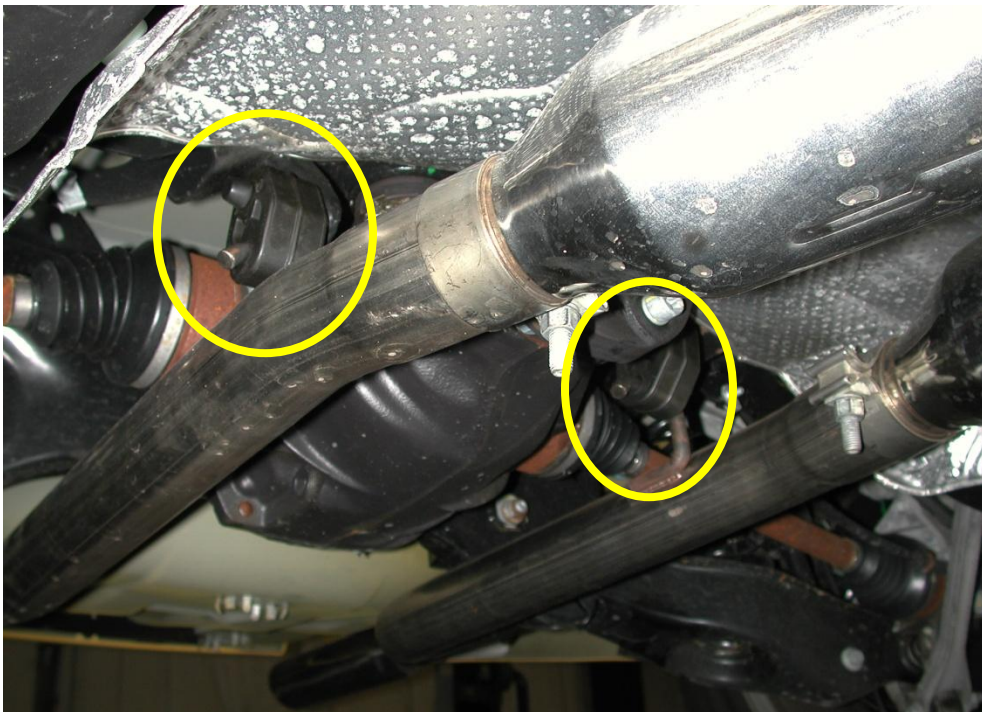


Figure 5: Stock rubber isolators



Figure 6: Stock rubber isolater

- 10 Next, install a 2.5" band clamp onto the outlet of each tail pipe and install each tip. The tips should be recessed in the factory fascia. See figures 7 and 8 below.



Figure 7: Tip installation



Figure 8: Tip installation

- 11 Adjust the system from front to rear making sure all exhaust components are clear and free of contact to any wiring or body parts.
- 12 The installation is now complete! ENJOY!