



PART
#31675/31675P/31675PM

Exhaust, Cat-Back, Trailblazer SS, 2006-2007

PACKING LIST

Before installation, use this check list to make sure all necessary parts have been included.

ITEM	QTY	CHECK	PART NUMBER	DESCRIPTION
1.	1	<input type="checkbox"/>	310675100	Intermediate pipe, front, assembly, Trailblazer SS Exhaust
2.	1	<input type="checkbox"/>	310675101	Over-axle pipe, D-side, Trailblazer SS Exhaust
3.	1	<input type="checkbox"/>	310675103	Connecting Pipe, D-side, Tail to Over-axle, Trailblazer SS Exhaust
4.	1	<input type="checkbox"/>	310675102	Over-axle Pipe, P-side, Trailblazer SS Exhaust
5.	1	<input type="checkbox"/>	310675104	Connecting Pipe, P-side, Tail to Over-axle, Trailblazer SS Exhaust
6.	1	<input type="checkbox"/>	310675105	Tailpipe, D-side, Trailblazer SS Exhaust
7.	1	<input type="checkbox"/>	310675106	Tailpipe, P-side, Trailblazer SS Exhaust
8.	2	<input type="checkbox"/>	15740212	Hanger, Rubber, Exhaust w/ 1/2" Holes
9.	2	<input type="checkbox"/>	310305080	Tip, 4" O.D., 9.5"L, 2.5" Inlet, Torca and Logo
10.	2	<input type="checkbox"/>	308302902	CLAMP, 2.5" EXHAUST
11.	1	<input type="checkbox"/>	308302904	CLAMP, 3" EXHAUST
12.	4	<input type="checkbox"/>	308303902	CLAMP, 2.5" EXHAUST UNI-BOLT
13.	2	<input type="checkbox"/>	308144380	CLAMP, 2.5" Torca Band, Vette/Must/Cobra/W-Body/GTO
14.	1	<input type="checkbox"/>	010854101	Valance, Rear, Trailblazer SS
15.	1	<input type="checkbox"/>	307675100	Hanger Assembly, D-Side, Rear, Trailblazer SS
16.	1	<input type="checkbox"/>	305806100	Heat Tape, 2" Width, DEI, 24"L
17.	1	<input type="checkbox"/>	310650800	Muffler, F150/Dodge Ram
18.	1	<input type="checkbox"/>	50229C	Tape 0.090 Thick 50" L x 1/2" W
19.	1	<input type="checkbox"/>	305806105	Tape 0.060 Thick, 3' L x 1" W
20.	1	<input type="checkbox"/>	15036012	Gasket, Intermediate Pipe, Trailblazer SS
21.	2	<input type="checkbox"/>	12000011	3M Adhesion Promoter, Single Packet
22.	2	<input type="checkbox"/>	020814619	Zip Ties, Black
23.	1	<input type="checkbox"/>	*****	Instructions

WARNING: SLP Recommends allowing the vehicle to cool (not running) for five hours before beginning installation.

NOTE: THE FRONT AND BACK OF THE SLP VALANCE MUST BE PREPED PRIMED AND PAINTED BEFORE FINAL INSTALLATION ON YOUR TBSS. IT IS SLP's RECOMMENDATION THAT THE VALANCE BE FIT TO THE VEHICLE PRIOR TO PREP PRIME AND PAINT AS ANY MINOR ADJUSTMENTS CAN THEN BE MADE TO THE TRUCK OR THE VALANCE FOR THE BEST FIT. SLP RECOMMENDS THAT A PROFESSIONAL BODY SHOP FINISH THE VALANCE INSTALLATION.

INSTALLATION INSTRUCTIONS - #31675

- 1 Raise and fully support the vehicle (a vehicle lift is recommended).
- 2 Support the muffler and using a hacksaw/cutoff tool/ sawzall carefully cut the muffler pipe in between the hanger and the muffler, see photo 1 below.
- 3 Unbolt the muffler flange bolts connecting the flex pipe and the stock muffler.

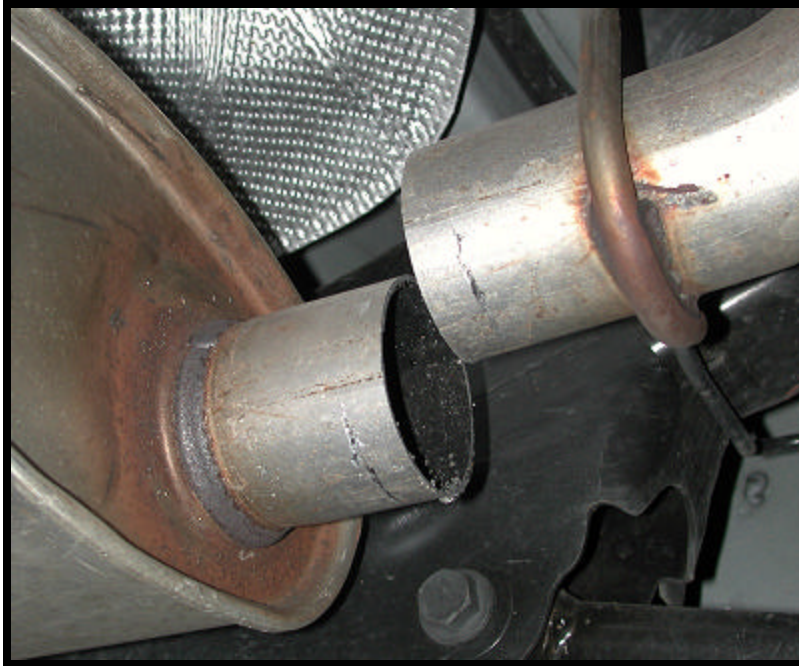


Photo 1: Muffler Cut Location

- 4 Remove the hanger from the rubber isolator and remove the muffler from the vehicle.
- 5 Using a partner carefully unhook the remaining stock exhaust pipe from the rubber isolators and remove the pipe with resonator from the rear of the vehicle, see photo 2 below.

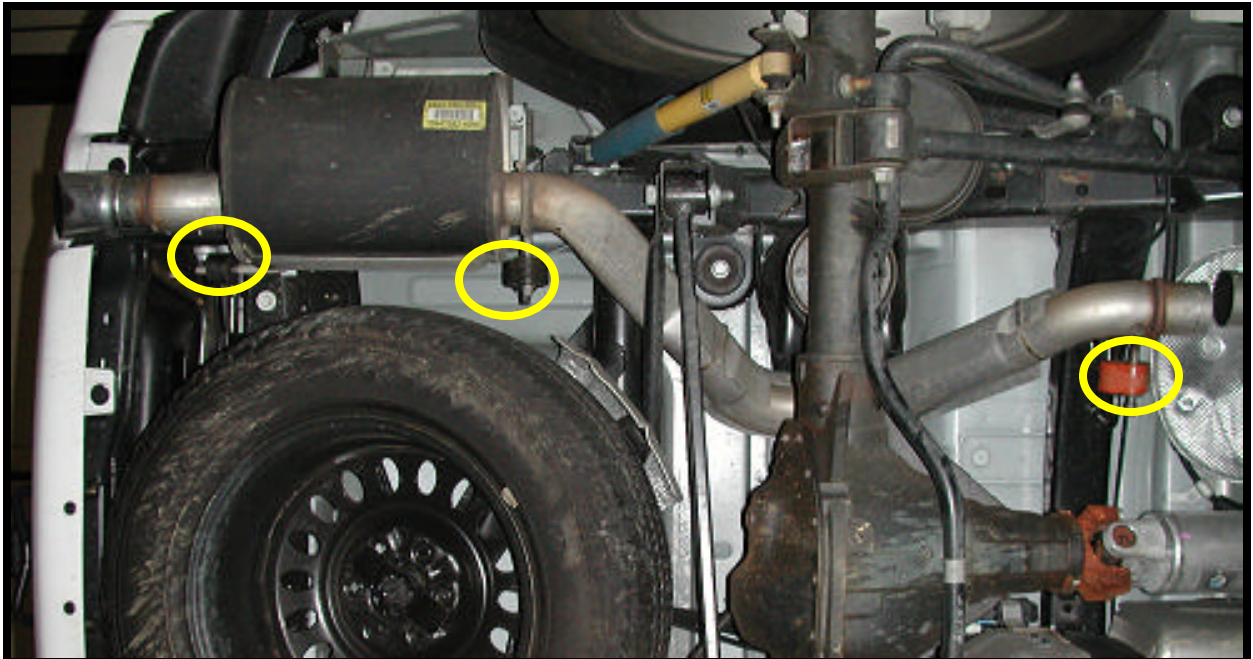
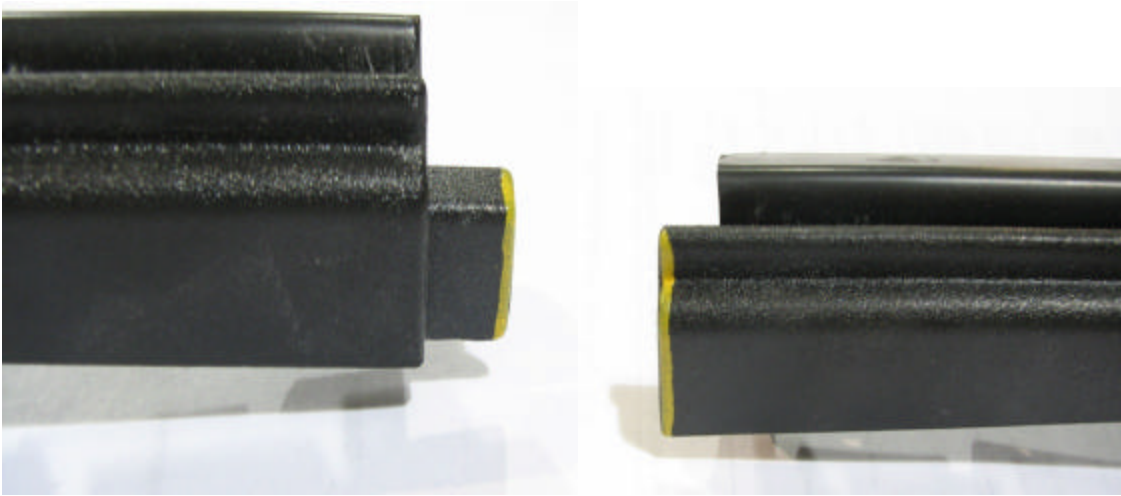


Photo 2: Stock Resonator Pipe Hanger Locations

- 6 Using a small flat blade screw driver carefully disengage the locking tabs from the trailer hitch valance and remove the stock rear valance from the vehicle see photo 3 below after valance has been removed.
- 7 Next check fitment of the new valance BEFORE PAINT by holding it in place with the aid of a helper on each side. Make any adjustments to the vehicle or valance as necessary. One adjustment that could be made **if needed** is to shorten each tab on the honeycomb rear valance sections by 1/16” see photo below. This can help and keep you from having to sand any inside edges of the valance if needed. **Check fitment first before any modifications.**



- 8 Paint the new rear SLP Valance.
- 9 Next thoroughly clean the back of the new PAINTED SLP valance with wax and grease remover and let dry.
- 10 Next thoroughly clean the three main surfaces where you will be installing the tape onto your TBSS with soap and water first then wax and grease remover twice as this area can be VERY dirty and the tape needs to be adhered to a CLEAN prepped surface. See photo 3 on next page.

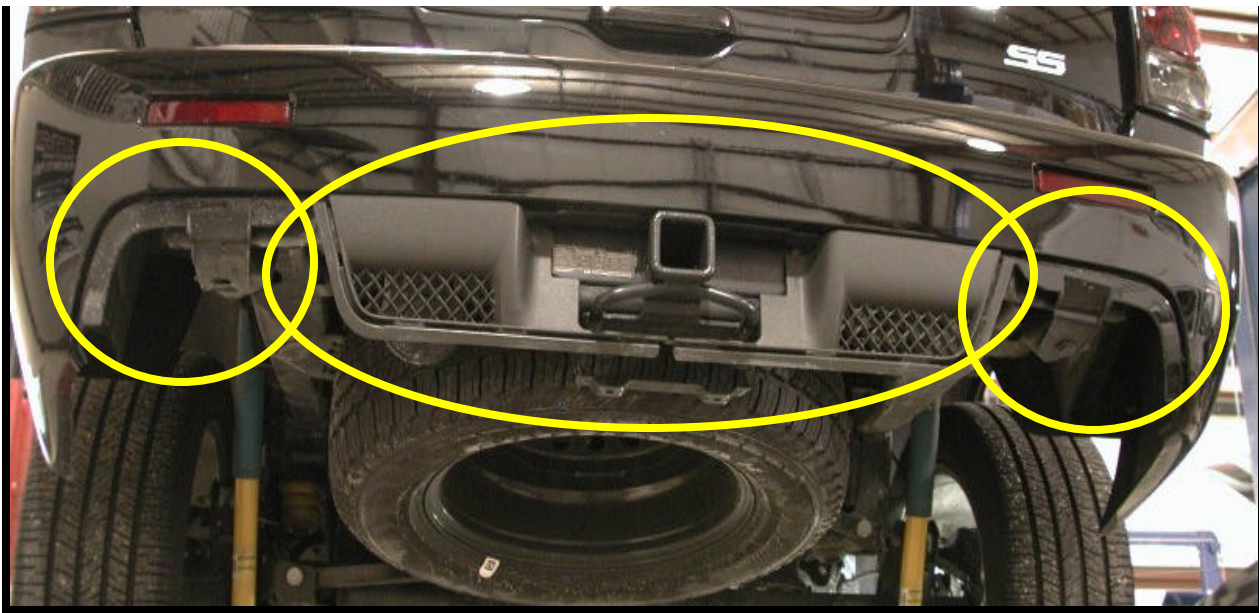


Photo 3: Sections to be Cleaned

- 11 After all surfaces have dried, use the supplied adhesion promoter on all surfaces to be taped. The adhesion promoter must be used in temperatures 60-80 Degrees F. The TBSS bumper and valance must also be 60-80 Degrees F. If the truck was outside, take it inside to the garage and let it warm up if necessary. This will create a surface optimal for tape adhesion.
- 12 Next, using the supplied ½” wide adhesive tape line the edges of the trailer hitch valance. See Photo 4 below.



Photo 4: Adhesive Tape on Trailer Hitch Valance

- 13 Next with the supplied 1” wide tape, line the two outside edges of the rear bumper. See photo 5.



Photo 5: Adhesive Tape on Rear of Vehicle

- 14 Next remove the outer backing of the tape and carefully install the new valance. It is easiest to remove the backing off the ½” wide pieces first, stick on the valance, and then peel off the backing on the 1” wide tape. Make sure that the two center hitch valance pieces are pushed together fully in the center as they can slide on each other.
- 15 Once the valance is in position, with high pressure secure the back of the taped sections with one hand and push from the outside to secure the valance to the tape. Move a couple inches at a time holding pressure for 10 seconds at each spot.
- 16 The installation of the rear valance is complete. Please see photo 6 below.



Photo 6: Valance Install Complete

- 17 Insert the hanger onto the front rubber insulator and place the intermediate pipe flange on the end of the flex pipe flange then loosely screw the stock nuts on the studs, see photo 7.

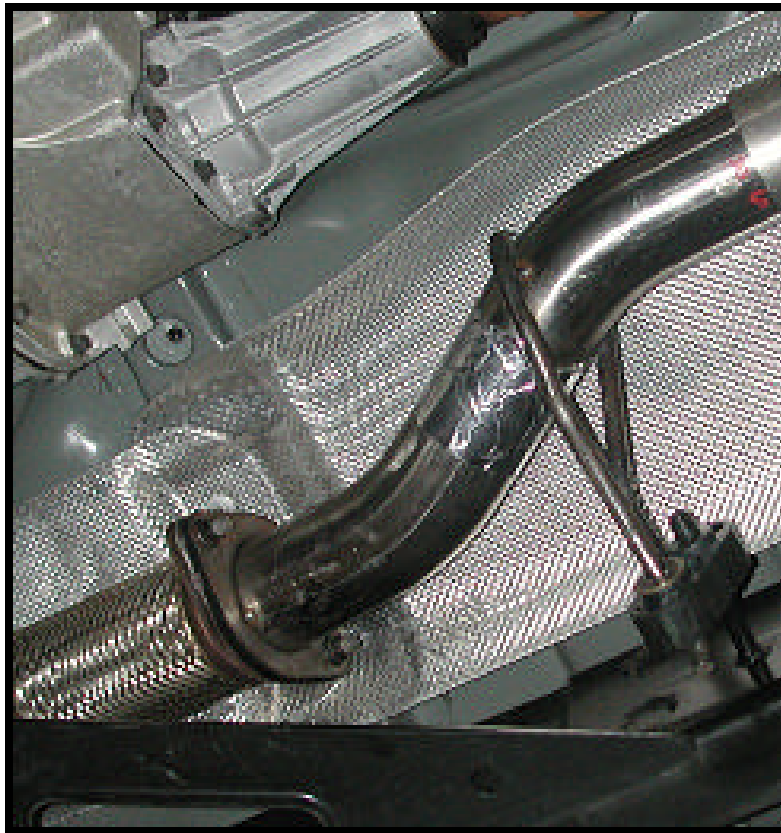


Photo 7: Intermediate Pipe and Hanger

- 18 Install the muffler onto the intermediate pipe with supplied 3” guillotine style clamp do not fully tighten the clamp at this time.

- 19 Slide the driver side over axle pipe onto the hanger with supplied 2 1/2" galvanized style clamp loose. Slip the hanger that is welded onto the pipe into the rubber isolator by rotating the pipe. Repeat this procedure for the passenger's side. **Note** there is no hanger on the passenger side pipe, see photo 8 below.

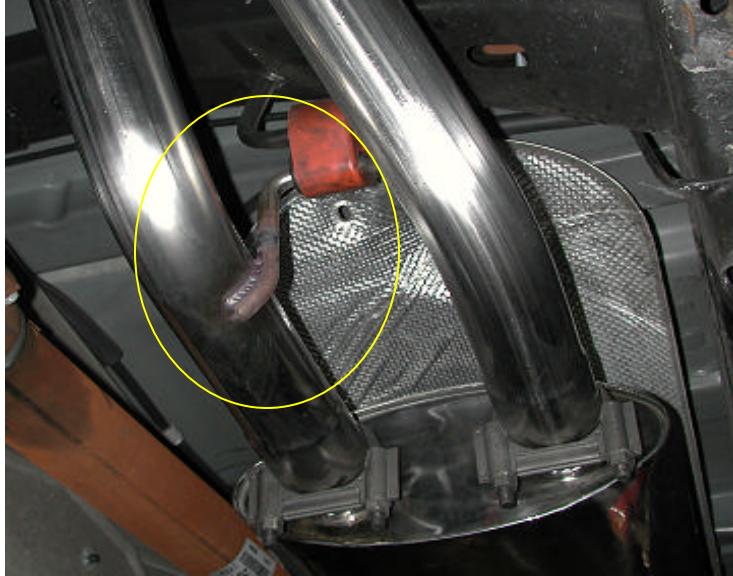


Photo 8: Over-axle Pipes Attached to Muffler

- 20 Next place the over-axle to tailpipe connecting pipes onto the outlet of the over-axle pipes with supplied unbolt clamps loose, see photo 9 below. The larger of the two connecting pipes goes on the passenger side.



Photo 9: Over-Axle to Tailpipe Connecting Pipes

- 21 Slide the driver's side tail pipe onto the connecting pipe with the 2 1/2" unbolt clamp loose on the pipe and place the hanger into the rubber isolator. Next insert the rubber isolator into the supplied clamp on hanger assembly and then bolt the hanger assembly to the chassis tube on the D-Side, see photo 10.
- 22 Slide the passenger's side tail pipe onto the connecting pipe with clamp loose on the pipe and place the hanger onto the rubber isolator, see photo 10. You are to reuse your stock rubber isolator on the passenger side tailpipe hanger.

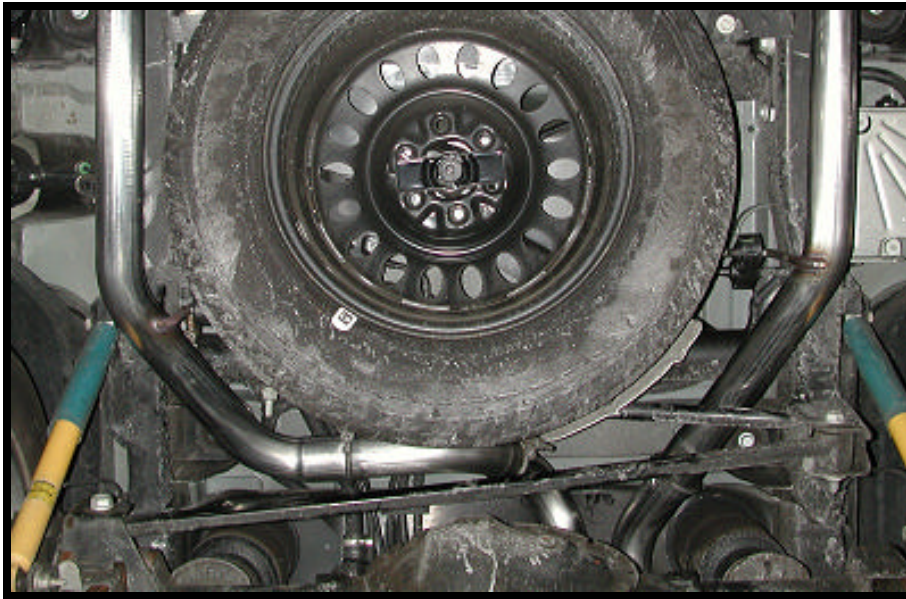


Photo 10: Tailpipes Attached to Connecting Pipes

- 23 Place the tips onto the end of the tailpipe with the supplied band clamp loosely attached.
- 24 Using supplied heat tape wrap the fuel lines in the area that is in close proximity to the exhaust pipe. This is an added extra precaution. Please see photo 11 below.



Photo 11: Fuel Lines Wrapped with Heat Tape

- 25 Remove the differential vent hose from the differential bracket as well as the bracket in front of the spare tire. Remove the bracket from the differential then tighten the bolt alone back onto the differential. Next using the supplied zip ties zip tie the hose to the fuel lines. Routing the line carefully to avoid contact with the exhaust pipe, see photo 12 on next page.

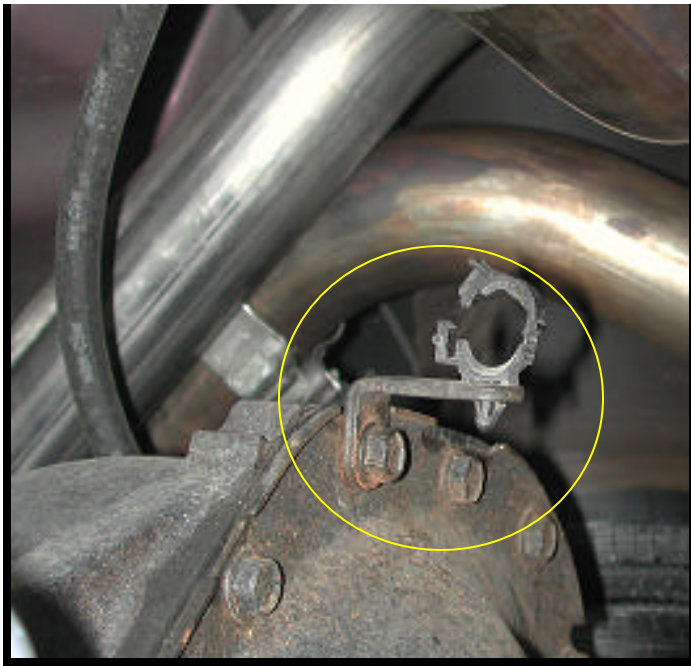


Photo 12: Vent Hose and Bracket

- 26 Adjust the system from front to rear making sure all exhaust components are clear and free of contact to any wiring or body parts and tighten all clamps securely.
- 27 The installation is now complete! ENJOY!