

## Exhaust System, 05-08 C6 LS2/LS3, Loudmouth/Loudmouth II

**PACKING LIST**

*Before installation, use this check list to make sure all necessary parts have been included.*

ITEM	QTY	CHECK	PART NUMBER	DESCRIPTION
1.	1	<input type="checkbox"/>	310301690	Over-axle Pipe, D-side, 05-08 Corvette
2.	1	<input type="checkbox"/>	310301691	Over-axle Pipe, P-side, 05-08 Corvette
3.	4	<input type="checkbox"/>	307398600	Hanger/Bracket, C6 exhaust
4.	2	<input type="checkbox"/>	310601805	Tip Assy, C6, Loudmouth/Loudmouth II
5.	2	<input type="checkbox"/>	020814600	WIRE TIE, WHITE NYLON
6.	2	<input type="checkbox"/>	308303902	CLAMP, 2.5" EXHAUST UNI-BOLT
7.	4	<input type="checkbox"/>	308144380	CLAMP, 2 1/2" TORCA BAND
8.	2	<input type="checkbox"/>	310013919	Resonator, Bullet, Loudmouth
			Or 310013818	Or Muffler, Bullet, Loudmouth II
9.	1	<input type="checkbox"/>	310601803	Stub, Assy, P-Side, Transition w/ Hanger
10.	1	<input type="checkbox"/>	310601804	Stub, Assy, D-Side, Transition w/ Hanger
11.	1	<input type="checkbox"/>	*****	Instructions

**WARNING:** SLP Recommends wearing safety glasses for the complete installation.

**WARNING:** SLP Recommends allowing the vehicle to cool (not running) for five hours before beginning installation.

**WARNING:** Too avoid the chance of electrical shock or damage to your vehicle's electrical system, disconnect both the negative and positive batter leads (in that order) at the battery.

**INSTALLATION INSTRUCTIONS – #31077/31078**

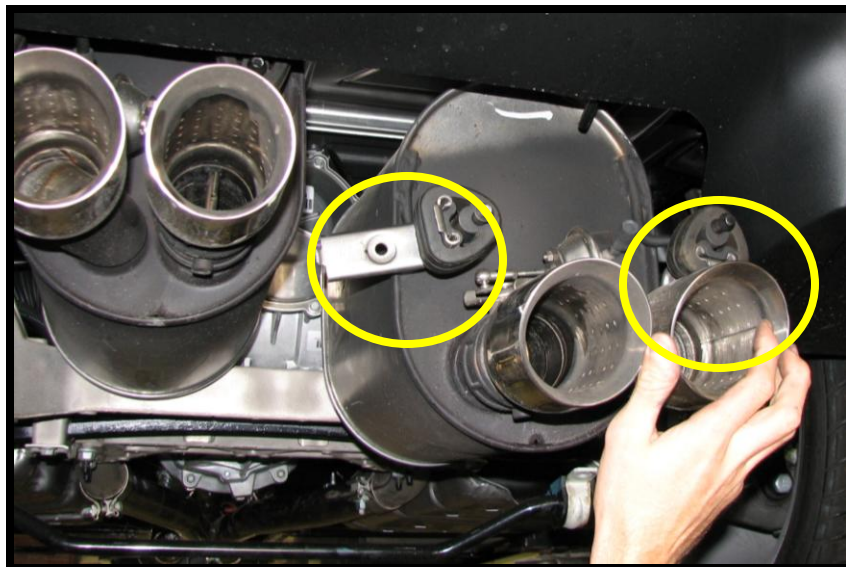
1. Disconnect the negative and positive battery cable. Raise the vehicle to allow for a sufficient work area underneath the vehicle. A vehicle lift will make this installation much easier; however, raising the vehicle can be accomplished using ramps or a jack with jack stands.
2. Begin removal of the OEM muffler/overaxle assembly by first removing the nuts/bolts on both of the rear sway bar mounting brackets and rotate the sway bar downward to facilitate removal of both muffler/over-axle assemblies.

3. Loosen the band clamps holding the tailpipes to the h-pipe. Then unbolt the flanges at the front of the h-pipe and the two hangers in the middle of the h-pipe. Let the front end drop down and slide the h-pipe off the tailpipes and remove it. Be careful not to damage the donut gaskets, as they need to be reused, see photo 1 below.



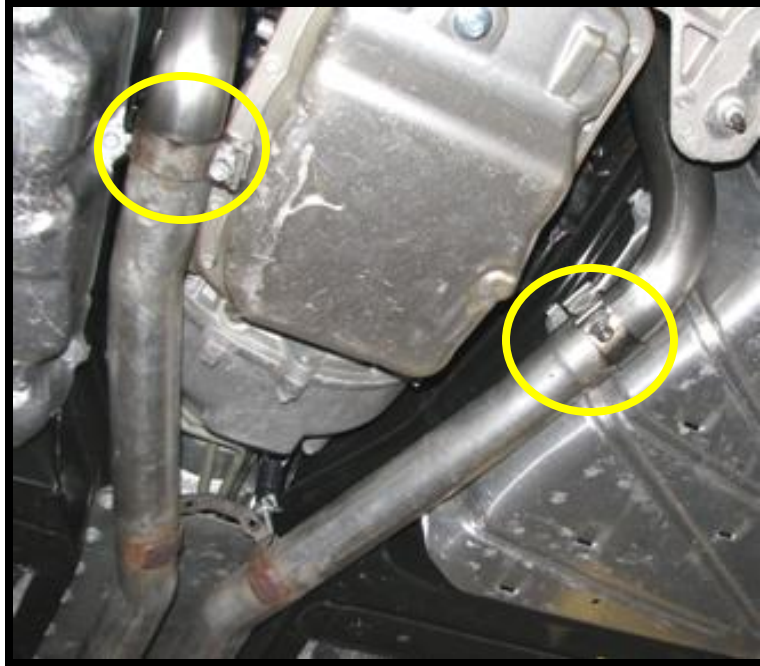
**Photo 1: Factory H-Pipe Removal**

4. Next remove the muffler/overaxle assembly from each side. First unbolt and remove each of the four rear muffler hangers from the vehicle. If equipped with dual mode exhaust, remove the vacuum line from each solenoid. Then remove the muffler/tailpipe assembly. Remove the rubber isolator from the muffler hangers and set them aside with the four bolts. They will be reused with the new brackets, see photo 2 below.  
*Note: Cutting of the over-axle pipe may be required to remove the passenger side muffler. Or loosen the four transmission mount bolts and have a second person pry the transmission slightly towards the driver's side.*



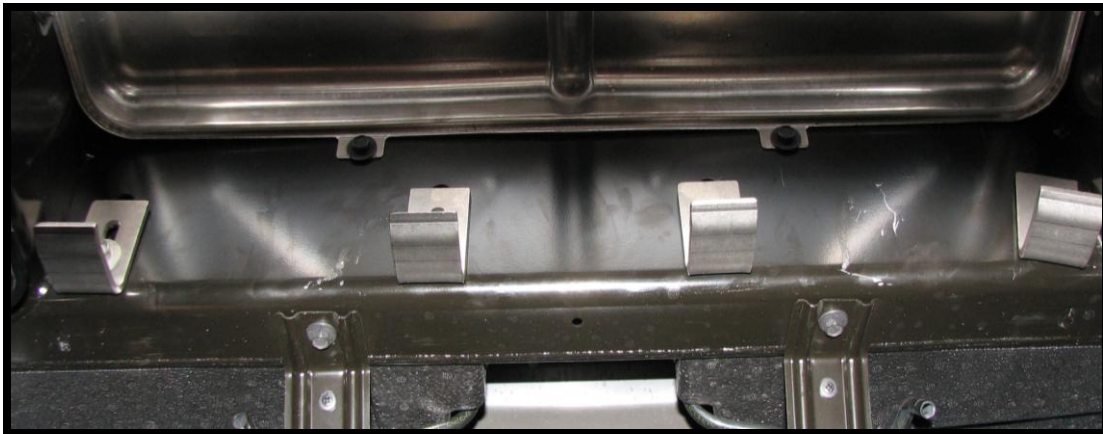
**Photo 2: Two of Four Muffler Hangers and Isolators**

5. Rotate the sway bar back into position and reinstall the sway bar bolts/nuts. Next slide both the driver and passenger side overaxle pipes over the rear axle and allow the pipes to rest on the axle. Place the original band clamps onto the over-axle pipe inlets and reinstall the h-pipe by first sliding the h-pipe into the over-axle pipes then reattaching the front of it to the converter outlet flanges. Do not forget to put the original donut gaskets back. Lastly reconnect the hanger in the middle of the h-pipe, see photo 3 below.



**Photo 3: Factory H-Pipe Reinstalled**

6. Bolt the four SLP hanger brackets to the chassis; it is not necessary to adjust the brackets at this point, see photo 4 below.



**Photo 4: Unadjusted SLP Muffler Hanger Brackets**

7. Install a resonator/muffler onto each over-axle pipe with a Torca band clamp. The nut on the clamp should face the differential on both sides. Next install hanger pipe onto the end of the resonator/muffler and slide the rubber isolators onto each of the four hangers then slide the hangers onto the SLP mounting brackets installed in step 6, see photo 5 below.  
\*Note\* The driver's side stub assembly will have a yellow marking on it.



**Photo 5: Resonators/Mufflers Installed on Over-axle Pipes**

8. Next install the two new dual/dual tips or cast tip using the supplied 2.5" Uni-bolt clamps onto the outlet stubs of the resonators/mufflers.
9. Tie the parking brake cables away from the exhaust using the supplied double loop wire ties. There is a hole on each side of the differential. Loop one loop of each wire tie through these and tighten. Then wrap the second loops around the parking brake cables. **Do not tighten the second loop.** Only pull them snug enough to keep the brake cables clear of the exhaust leaving enough room for them to slide in the loop.
10. Now adjust all the pipes until the tips are located as desired and all the pipes have enough clearance from all suspension, brake lines, fuel tank, driveline, and body parts.
11. Tighten all the clamps and fasteners working from the h-pipes back, while checking and maintaining correct tip location along the way.
12. Start the vehicle and inspect for leaks. Adjust the system from front to rear making sure all exhaust components are free and clear of contact to any wiring or body parts.
13. The installation is now complete! ENJOY!