

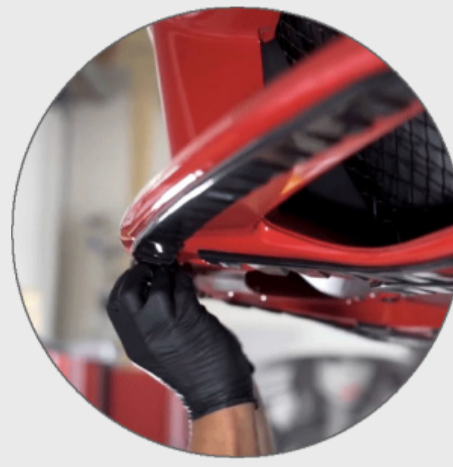
Protect Your Car in Less Than an Hour

Improve gliding by 40% while reducing friction



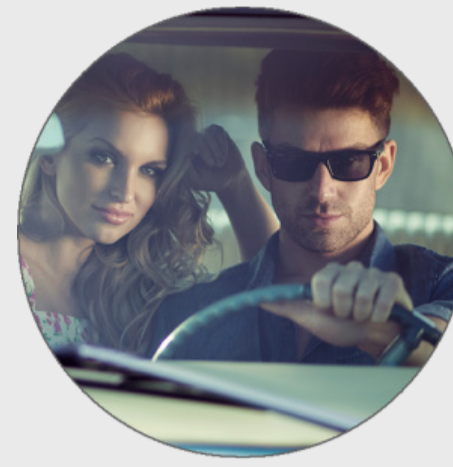
#1

Remove super strength **3M** adhesive backing



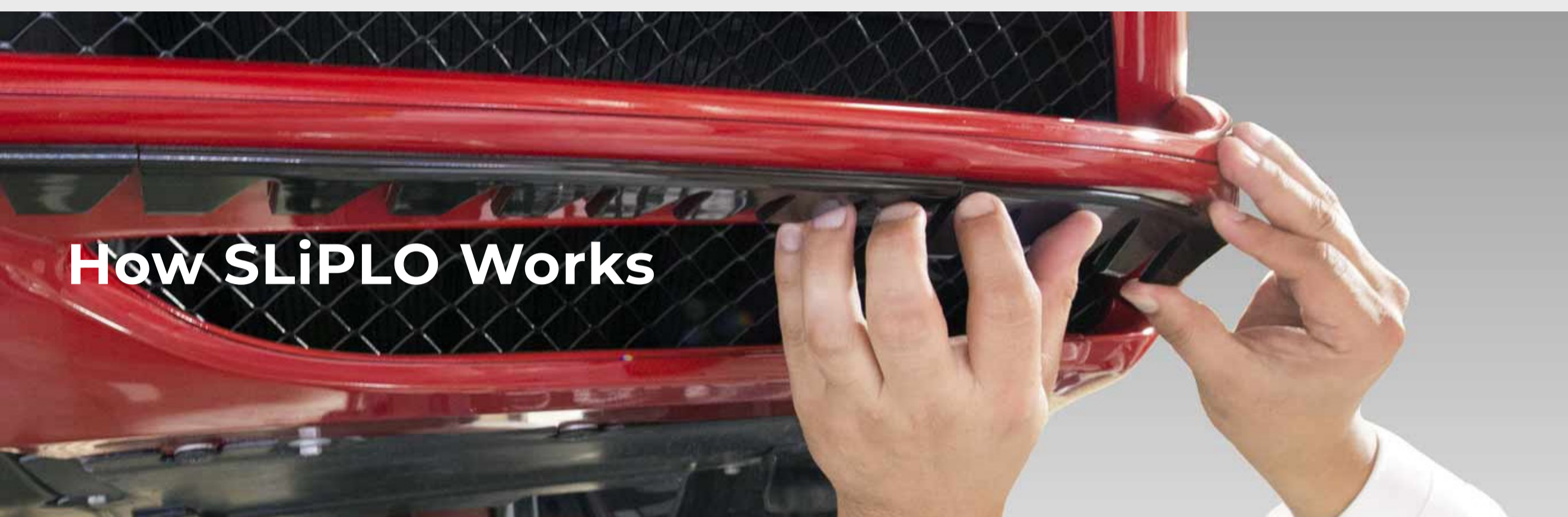
#2

Adhere **SLiPLO** onto your bumper



#3

Drive with confidence knowing your car is protected



How SLiPLO Works



1. Get Your SLiPLO DIY Kit (Option 1)

Take the first step on your journey to a better driving experience: buy an SLiPLO Universal Skid Plate. Shop for the latest model from store today. This is the perfect option for those who are hands on and enjoy doing the install themselves.

2. Find an Installer (Option 2)

Get protected by bringing your car to a SLiPLO authorized dealer near you. Search installer, call the shop closest to you, setup and appointment, bring your car in for professional installation. This is a great option for those looking to have a professional do the installation for them.

3. Just Place it on Your Bumper

Simply attach SLiPLO onto the under carriage of your bumper by using the 3M double sided adhesive included with each unit. For best results it's highly suggested to prepare the surface area using some kind of an adhesive promoter such as 3M Primer 94. Make sure to watch our step by step installation videos or read our installation instructions to learn how to properly install your DIY kit.

4. Get immediate Bumper Protection

SLiPLO's 3M super strength adhesive has been formulated to create a 90% bond strength within the first twenty minutes after attachment. Also using the 3M adhesive primer to prepare you bumper in combination with the 3M double sided adhesive can increase each units bond strength by more then 100%. Please allow up to 48 hours for the adhesive to fully cure before washing your car.

