



2014 Ram 2500 4WD  
2013 - 2014 Ram 3500 4WD  
2" [Front Metal Spacer Kit](#)  
Installation Instructions

**REQUIRED TOOL LIST:**

- Safety Glasses
- Metric / Standard Wrenches & Sockets
- Floor Jack
- Jack Stands
- Measuring Tape
- Torque Wrench



---

Make sure you park the vehicle on a level concrete or asphalt surface. Many times a vehicle is not level (side-to-side) from the factory & is usually not noticed until a lift kit has been installed, which makes the difference more visible. Using a measuring tape, measure the front (both sides) from the ground up to the center of the fender opening above the axle. Record this information below for future reference.

Driver Side Front: \_\_\_\_\_

Passenger Side Front: \_\_\_\_\_

**Important Notes:**

- If larger tires (10% more than the OEM diameter) are installed, speedometer recalibration will be necessary. Contact your local Ram dealer or an authorized dealer for details.
- After installation, a qualified alignment facility is required to align the vehicle to the OEM specifications.

## Component Box Breakdown:

### Part #: R1325MS / R1325MSB

Item #	Description	Qty
R1325MS2-S	2" METAL COIL SPRING SPACER	2
R14SE20-B	2" SHOCK EXTENSION BRKT (Included With R1325MSB)	2
HB-R1325MS	HDWR BAG: R1325MS SPACERS	1

Item #	Description	Qty
HB-R14SE20	HDWR BAG: R14SE20 SHK BRKT (Included With R1325MSB)	1
I-R1325MS	INST SHT: R1325MS / R1325MSB	1

## Hardware Bag Breakdown:

### Part # HB-R1325MS

Item #	Description	Qty
716X114FTB	7/16 X 1 1/4 FINE THREAD BOLT	2
716SAEW	7/16 SAE WASHER	2

Item #	Description	Qty
716FTN	7/16 FINE THREAD LOCK NUT	2

### Part # HB-R14SE20

Item #	Description	Qty
14X80MMB	14MM X 80MM METRIC BOLT	2
916SAEW	9/16 SAE WASHER	4

Item #	Description	Qty
14MMN	14MM METRIC LOCK NUT	2

## Installation:

1. With the vehicle on a level concrete or asphalt surface, set the emergency brake & block the rear tires / wheels.
2. Lift the front of the vehicle & support the vehicle using jack stands.
3. Remove the front tires / wheels. (See Photo # 1)
4. Disconnect the OEM front shocks at each lower mount. (See Photo # 2)
5. Disconnect the OEM sway bar end links from the OEM sway bar. (See Photo # 3)



Photo # 1

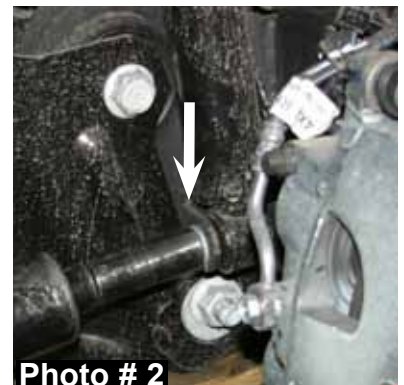


Photo # 2



Photo # 3

6. Disconnect the OEM drag link from the OEM pitman arm. (See Photo # 4)
7. Disconnect the OEM ABS / brake line brackets from the front axle. (See Photo # 5)
8. Disconnect the OEM track bar from the upper frame mount. (See Photo # 6)
9. While checking for appropriate slack in ABS lines, brake lines, differential breather hose, & etc. Lower the front axle & remove the OEM coil springs & rubber isolators. (See Photo # 7)
10. With the Skyjacker logo facing outward towards the front tires / wheels, install the new Skyjacker metal coil spring spacers to the OEM coil spring isolator mounting locations using the supplied 7/16" x 1 1/4" bolts, washers, & nuts. (See Photo # 8)
11. **Driver Side:** Install the driver side OEM coil spring isolator to the new driver side Skyjacker metal coil spring spacer using the mounting hole directly below the previously installed 7/16" bolt.
12. **Passenger Side:** Install the passenger side OEM coil spring isolator to the new passenger side Skyjacker metal coil spring spacer using the mounting hole to the left of the previously installed 7/16" bolt. (See Photo # 9)

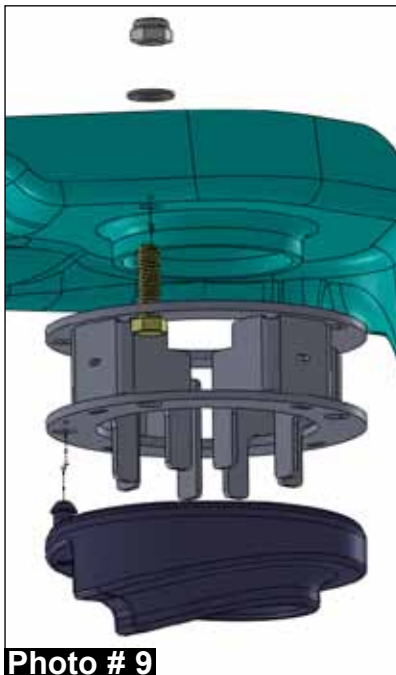
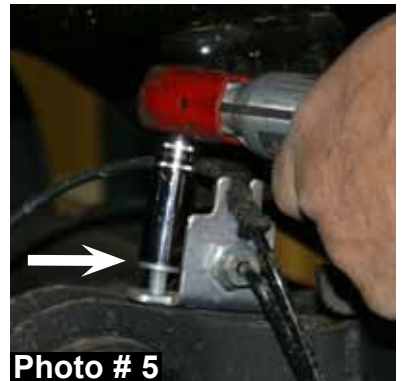
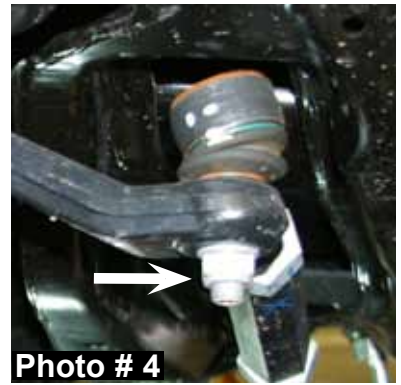


Photo # 8

Photo # 9

Photo # 6

Photo # 7

13. Install the OEM coil springs & raise the front axle in order to load the OEM coil springs. (See Photo # 10)
14. Connect the OEM track bar to the upper frame mount using the OEM hardware. (See Photo # 6)
15. Connect the OEM ABS / brake line brackets to the front axle using the OEM hardware. (See Photo # 5)
16. Connect the OEM drag link to the OEM pitman arm using the OEM hardware. (See Photo # 4)
17. Connect the OEM sway bar end links to the OEM sway bar using the OEM hardware. (See Photo # 3)



**Photo # 10**

**Part # R1325MS / OEM Front Shock Installation:**

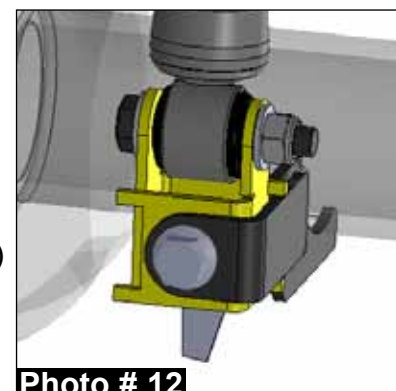
18. Connect the OEM front shocks at each lower mount using the OEM hardware. (See Photo # 2) Proceed to Step # 21.



**Photo # 11**

**Part # R1325MSB / OEM Front Shock Installation:**

19. Install the new Skyjacker lower shock extension brackets to the OEM front shocks using the supplied 14mm x 80mm bolts, washers, & nuts. (See Photo # 11)
20. Connect the new Skyjacker lower shock extension brackets to the OEM front shock mounts using the OEM hardware. (See Photo # 12)
21. Install the front tires / wheels & lower the front of the vehicle to the ground. (See Photo # 1)



**Photo # 12**

**Final Notes:**

- After the installation is complete, double check that all nuts & bolts are tight. Refer to the following chart for the proper torque specifications. (Do not retighten the nuts & bolts where thread lock compound was used.)
- With the vehicle placed on the ground, cycle the steering lock to lock & inspect the steering, suspension, brake lines, front & rear drivelines, fuel lines, & wiring harnesses for proper operation, tightness, & adequate clearance.
- Have the headlights readjusted to the proper settings.
- Have a qualified alignment center align the vehicle to the OEM specifications.
- After the first 100 miles, check all of the hardware for the proper torque & periodically thereafter.

**TORQUE SPECIFICATIONS**

<b><u>INCH SYSTEM</u></b>			<b><u>METRIC SYSTEM</u></b>		
<b>Bolt Size</b>	<b>Grade 5</b>	<b>Grade 8</b>	<b>Bolt Size</b>	<b>Class 8.8</b>	<b>Class 10.9</b>
5/16	15 FT LB	20 FT LB	6MM	5 FT LB	9 FT LB
3/8	30 FT LB	35 FT LB	8MM	18 FT LB	23 FT LB
7/16	45 FT LB	60 FT LB	10MM	32 FT LB	45 FT LB
1/2	65 FT LB	90 FT LB	12MM	55 FT LB	75 FT LB
9/16	95 FT LB	130 FT LB	14MM	85 FT LB	120 FT LB
5/8	135 FT LB	175 FT LB	16MM	130 FT LB	165 FT LB
3/4	185 FT LB	280 FT LB	18MM	170 FT LB	240 FT LB

- The above specifications are not to be used when the bolt is being installed with a bushing.