



09-12 Dodge 2500/3500 4WD
Dual Steering Stabilizer Part
7239 / 9239

REQUIRED TOOL LIST:

- Safety Glasses
- Metric / Standard Wrenches & Sockets
- Drill & 3/8" Drill Bit
- Measuring Tape
- Torque Wrench

Component Box Breakdown:

Part #: 7239 / 9239

Item #	Description	Qty	Item #	Description	Qty
7000WS	WHITE STEERING DAMPER (Included With 7239)	2	BTIE	RED BOOT TIE (Included With 7239)	2
9000WS	SILVER STEERING DAMPER (Included With 9239)	2	BTIE-K	BLACK BOOT TIE (Included With 9239)	2
7213-MB	MAIN STRG STAB BRACKET	1	HSS	HYDRO SHOCK DECAL (Included With 7239)	2
7213-PB	PASS STRG STAB BRACKET	1	SSD	SILVER STABILIZER DECAL (Included With 9239)	2
7213-DB	DRIVER STRG STAB BRACKET	1	HB-7239	HARDWARE BAG: 7239 / 9239	1
B10RS	RED BOOT (Included With 7239)	2	I-7239	INST SHEET: 7239 / 9239	1
B10KS	BLACK BOOT (Included With 9239)	2			

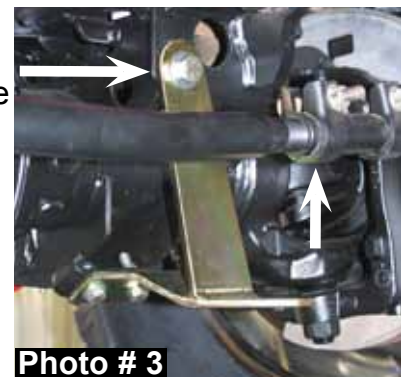
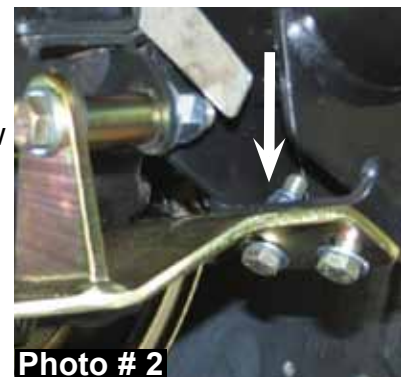
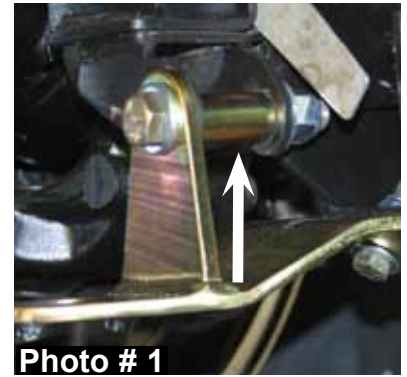
Hardware Bag Breakdown:

Part # HB-7239

Item #	Description	Qty	Item #	Description	Qty
12X3FTB	1/2 X 3 FINE THREAD BOLT	1	38CTN	3/8 COARSE THREAD LOCK NUT	4
12X112FTB	1/2 X 1 1/2 FINE THREAD BOLT	1	38FTN	3/8 FINE THREAD LOCK NUT	4
38X114FTB	3/8 X 1 1/4 FINE THREAD BOLT	4	12FTN	1/2 FINE THREAD LOCK NUT	2
38X1716X234U	3/8 X 1 7/16 X 2 3/4 U-BOLT RD	2	12SAEW	1/2 SAE WASHER	4
140629	EB6 STUD BAG - P932/140629	4	38SAEW	3/8 SAE WASHER	12
HOURGLASS 5/8	HOURGLASS 5/8 BUSHING	4	142121	ES34 SLEEVE, 1.38" LONG	1

Installation:

1. Park the vehicle on a level concrete or asphalt surface with the front tires / wheels pointing straight forward.
2. Set the emergency brake & block the rear tires / wheels.
3. Remove the OEM steering stabilizer from the OEM mount on the axle & OEM drag link.
4. Install the new Skyjacker passenger side bracket to the OEM stabilizer mount on the axle using the supplied 1/2" x 3" fine thread bolt, washers, & nut. **Note:** Be sure to install the supplied 1.38" anti-crush sleeve (Part # 142121) inside the OEM mount. (See Arrow in Photo # 1)
5. Mark & drill the two lower mounting holes of the bracket to 3/8". Once drilled, install the supplied 3/8" x 1 1/4" fine thread bolts, washers, & nuts. (See Arrow in Photo # 2)
6. Loosen & rotate the OEM driver side outer tie rod adjusting sleeve clamps to the top of the OEM driver side outer tie rod adjusting sleeve. (See Arrow in Photo # 3) Install the new Skyjacker driver side bracket to the mounting hole in the bottom of the OEM coil spring mount, using the supplied 1/2" x 1 1/2" fine thread bolt, washers, & nut. (See Arrow in Photo # 3)
7. Mark & drill the two lower bracket holes the same as in Step # 5. Once drilled, install using the supplied 3/8" x 1 1/4" fine thread bolts, washers, & nuts.
8. Remove the OEM stabilizer bracket from the OEM drag link & install the new Skyjacker main bracket, using the supplied 3/8" x 1 7/16" x 2 3/4" u-bolts, washers, & nuts. (See Photo # 4) **Note:** Be sure to line the new u-bolts up with the OEM notches on the OEM drag link.
9. Install the new Skyjacker double ended studs to each bracket. **Note:** The new studs will mount to the top of the outer brackets & to the bottom of the main bracket.
10. Slide the new Skyjacker boots over the shafts of the new Skyjacker steering stabilizers & attach with the supplied boot ties.



11. Install the new Skyjacker polyurethane bushings into each end of the new Skyjacker steering stabilizers. Attach the new steering stabilizers onto the new studs & tighten. (See Photo # 5)

12. Once the steering stabilizers are installed, check all the brackets & bolts for proper installation. (See Photo # 6)



Photo # 5

Final Notes:

- After the installation is complete, double check that all nuts & bolts are tight. Refer to the following chart for the proper torque specifications. (Do not retighten the nuts & bolts where thread lock compound was used.)
- Cycle the steering of the vehicle left to right & check all parts for adequate clearance.
- After the first 100 miles, check all of the hardware for the proper torque & periodically thereafter.



Photo # 6

<u>TORQUE SPECIFICATIONS</u>					
<u>INCH SYSTEM</u>			<u>METRIC SYSTEM</u>		
Bolt Size	Grade 5	Grade 8	Bolt Size	Class 8.8	Class 10.9
5/16	15 FT LB	20 FT LB	6MM	5 FT LB	9 FT LB
3/8	30 FT LB	35 FT LB	8MM	18 FT LB	23 FT LB
7/16	45 FT LB	60 FT LB	10MM	32 FT LB	45 FT LB
1/2	65 FT LB	90 FT LB	12MM	55 FT LB	75 FT LB
9/16	95 FT LB	130 FTLB	14MM	85 FT LB	120 FT LB
5/8	135 FT LB	175 FT LB	16MM	130 FT LB	165 FT LB
3/4	185 FT LB	280 FT LB	18MM	170 FT LB	240 FT LB

- The above specifications are not to be used when the bolt is being installed with a bushing.

Seat Belts Save Lives, Please Wear Your Seat Belt.