



09-11 Dodge 2500 & 3500
4WD Dual Steering Stabilizer
Part # 7239

REQUIRED TOOL LIST:

- Safety Glasses
- Metric / Standard Wrenches & Sockets
- Drill & Assorted Drill Bits
- Torque Wrench

Before beginning the installation, thoroughly & completely read these instructions & the enclosed driver's WARNING NOTICE. Affix the WARNING decal in the passenger compartment in clear view of all occupants. Please refer to the Parts List to insure that all parts & hardware are received prior to the disassembly of the vehicle.

Kit Box Breakdown:

Part #: 7239

ITEM#	DESCRIPTION	QTY
7000WS	WHITE STEERING DAMPER	2
7213-MB	03DGE,MAIN STRG STAB BRACKET	1
7213-DB	03DGE,DRIVER STRG STAB BRKT	1
7213-PB	03DGE,PASS STRG STAB BRACKET	1
B10RS	RED BOOT	2
BTIE	RED BOOT TIE	2
HB-7239	HDWR BAG: 7239 DUAL STAB	1
HSS	HYDRO SHOCK DECAL	2
I-7239	INST SHEET: 7239 DUAL STAB	1

Hardware Bag Breakdown:

HB-7239 HARDWARE BAG

ITEM#	DESCRIPTION	QTY
12X112FTB	1/2 X 1 1/2 FINE THRD BOLT	1
12X3FTB	1/2 X 3 FINE THREAD BOLT	1
38X114FTB	3/8 X 1 1/4 FINE THD/GRD 8	4
38X1716X234U	3/8 X 1 7/16 X 2 3/4 U-BOLT	2
140629	EB6 STUD BAG - P932/140629	4
HOURGLASS 5/8	HOURGLASS 5/8 SHOCK BUSHING	4
12FTN	1/2-20 FINE N/I LOCK NUT	2
38CTN	3/8-16 COARSE N/I LOCK NUT	4
38FTN	3/8-24 FINE N/I LOCK NUT	4
12SAEW	1/2 SAE WASHER	4

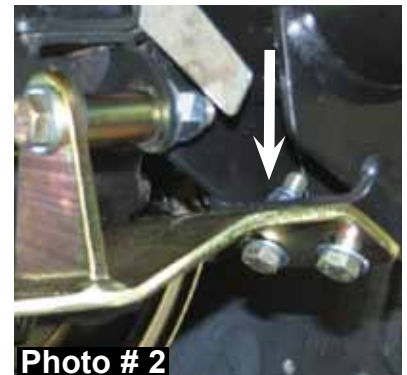
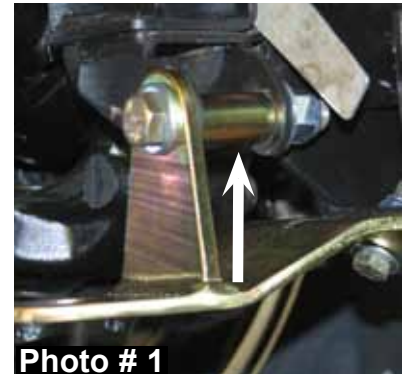
Hardware Bag Breakdown: (Continued)

HB-7239 HARDWARE BAG

ITEM#	DESCRIPTION	QTY
38SAEW	3/8 SAE WASHER	12
142121	ES24 SLEEVE/402087 1.38"	1

Installation:

1. Park the vehicle on a level concrete or asphalt surface with the tires pointing straight forward.
2. Set the emergency brake & block the rear tires.
3. Remove the OEM steering stabilizer from the OEM mount on the axle & OEM drag link.
4. Install the new Skyjacker passenger side bracket to the OEM stabilizer mount on the axle using the 1/2" x 3" fine thread bolt, washers, & nut. **Note:** Be sure to install the 1.38" anti-crush sleeve (Part # 142121) inside the OEM mount. (See Arrow in Photo # 1)
5. Mark & drill the two lower mounting holes of the bracket to 3/8". Once drilled, install the 3/8" x 1 1/4" fine thread bolts, washers, & nuts. (See Arrow in Photo # 2)
6. Install the new Skyjacker driver side bracket to the mounting hole in the bottom of the OEM coil spring mount, using the 1/2" x 1 1/2" fine thread bolt, washers, & nut. (See Arrow in Photo # 3)
7. Mark & drill the two lower bracket holes the same as in Step # 5. Once drilled, install using the 3/8" x 1 1/4" fine thread bolts, washers, & nuts.
8. Remove the OEM stabilizer bracket from the OEM drag link & install the new Skyjacker main bracket, using the 3/8" x 1 7/16" x 2 3/4" U-bolts, washers, & nuts. (See Photo # 4) **Note:** Be sure to line the U-bolts up with the OEM notches on the OEM drag link.
9. Install the new Skyjacker double ended studs to each bracket. **Note:** The studs will mount to the top of the outer brackets & to the bottom of the main bracket.
10. Slide the new Skyjacker boots over the shafts of the new Skyjacker steering stabilizers & attach with the supplied boot tie.



11. Install the new Skyjacker polyurethane bushings into each end of the new Skyjacker steering stabilizers. Attach the steering stabilizers onto the new studs & tighten. (See Photo # 5)

12. Once the steering stabilizers are installed, check all the brackets & bolts for proper installation. (See Photo # 6)



Photo # 5

Final Notes:

- Cycle the steering left to right & check all parts for adequate clearance.
- Retighten all hardware after the first 100 miles.



Photo # 6

TORQUE SPECIFICATIONS

<u>INCH SYSTEM</u>			<u>METRIC SYSTEM</u>		
Bolt Size	Grade 5	Grade 8	Bolt Size	Class 8.8	Class 10.9
5/16	15 FT LB	20 FT LB	6MM	5 FT LB	9 FT LB
3/8	30 FT LB	35 FT LB	8MM	18 FT LB	23 FT LB
7/16	45 FT LB	60 FT LB	10MM	32 FT LB	45 FT LB
1/2	65 FT LB	90 FT LB	12MM	55 FT LB	75 FT LB
9/16	95 FT LB	130 FTLB	14MM	85 FT LB	120 FT LB
5/8	135 FT LB	175 FT LB	16MM	130 FT LB	165 FT LB
3/4	185 FT LB	280 FT LB	18MM	170 FT LB	240 FT LB

- The above specifications are not to be used when the bolt is being installed with a bushing.

Seat Belts Save Lives, Please Wear Your Seat Belt.