



**1999 - 2006 GM K1500**  
**Single Steering Stabilizer**  
**Part # 7196 / 9196**

**REQUIRED TOOL LIST:**

- Safety Glasses
- Metric / Standard Wrenches & Sockets
- Drill / 5/16" Drill Bit
- Measuring Tape
- Torque Wrench

---

**Component Box Breakdown:**

**Part #: 7196 / 9196**

Item #	Description	Qty	Item #	Description	Qty
7500WS	WHITE STEERING DAMPER (Included With 7196)	1	BTIE-K	BLACK BOOT TIE (Included With 9196)	1
9500WS	SILVER STEERING DAMPER (Included With 9196)	1	HSS	HYDRO SHOCK DECAL (Included With 7196)	1
B12RS	RED BOOT (Included With 7196)	1	SSD	SILVER STABILIZER DECAL (Included With 9196)	1
B12KS	BLACK BOOT (Included With 9196)	1	HB-7196	HARDWARE BAG: 7196 / 9196	1
BTIE	RED BOOT TIE (Included With 7196)	1	I-7196	INST SHEET: 7196 / 9196	1

**Hardware Bag Breakdown:**

**Part # HB-7196**

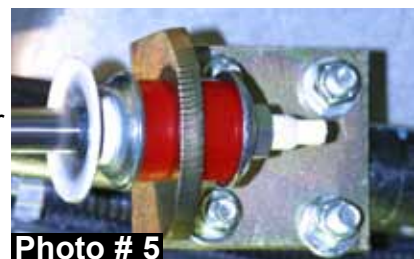
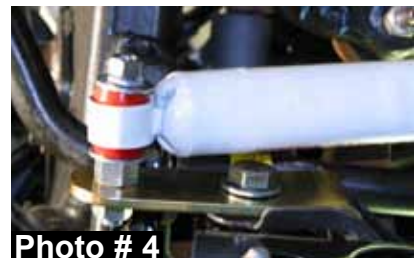
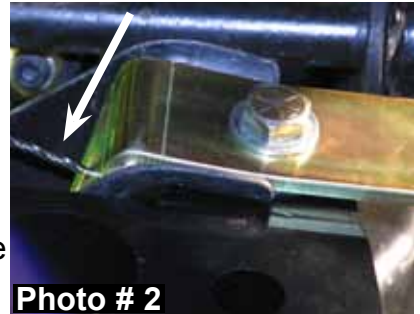
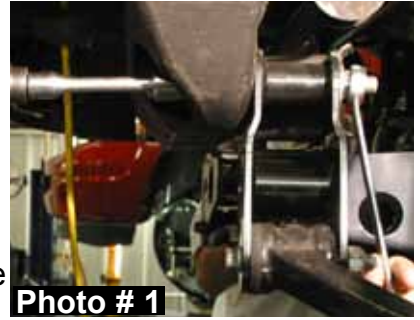
Item #	Description	Qty	Item #	Description	Qty
83037	TIE ROD BRACKET	1	516SAEW	5/16 SAE WASHER	4
C966DSST-S	STAB TAB BRACKET	1	38X1TCFB	3/8 X 1 THRD-CUT FLG BOLT	1
140629	EB6 STUD BAG	1	142120	STAB WASH PKG	1
516X114X134U	5/16 X 1 1/4 X 1 3/4 U-BOLT RD	2	HOURGLASS 5/8	5/8 SHOCK BUSHING	1
516CTN	5/16 COARSE THREAD LOCK NUT	4	STEM BUSH-SST	STEM BUSHING	2

## Installation:

1. Park the vehicle on a level concrete or asphalt surface with the front tires / wheels pointing straight forward.
2. Set the emergency brake & block the rear tires / wheels.
3. While supporting the front cross member with a floor jack, remove the front lower A-arm bolt at the frame. (If installing on a vehicle with 4" or more lift, it will be the upper front bolt on the after market cross member. Remove the bolt using a 15/16" socket. (See Photo # 1)
4. Once the bolt is removed, reinstall with the new Skyjacker outer stabilizer bracket. Be sure to install the bolt pointing toward the front. Drill inside the mounting hole using 5/16" drill bit. Then install the supplied 3/8" thread cutter bolt. (See Photo # 2) The arrow shows the drill bit.
5. Attach the supplied shock stud to the new bracket being sure to use washers. (See Photo # 3)
6. Install the new Skyjacker main bracket to the OEM center link using the supplied u-bolts, washers & nuts. Measure from the center of the OEM pitman arm 9" & mount the drivers side edge of the new center link bracket at this point. Slightly adjust the new main bracket, so the new Skyjacker steering stabilizer is pulled out half way. (See Photo # 5)
7. Attach the new steering stabilizer to the new outer bracket & new center link bracket using the supplied steering stabilizer hardware. (See Photo # 4 & # 5)

### Important Note:

- This steering stabilizer kit is designed for the 99-06 GM 1/2 ton 4WD. It will fit lift heights 4"-6" on kits with a lowered front cross member. This kit will **NOT** work on vehicles with a lift kit that relocates the upper A-Arms.



## **Final Notes:**

- After the installation is complete, double check that all nuts & bolts are tight. Refer to the following chart for the proper torque specifications. (Do not retighten the nuts & bolts where thread lock compound was used.)
- Cycle the steering of the vehicle left to right & check all parts for adequate clearance.
- After the first 100 miles, check all of the hardware for the proper torque & periodically thereafter.

<b><u>TORQUE SPECIFICATIONS</u></b>					
<b><u>INCH SYSTEM</u></b>			<b><u>METRIC SYSTEM</u></b>		
<b>Bolt Size</b>	<b>Grade 5</b>	<b>Grade 8</b>	<b>Bolt Size</b>	<b>Class 8.8</b>	<b>Class 10.9</b>
5/16	15 FT LB	20 FT LB	6MM	5 FT LB	9 FT LB
3/8	30 FT LB	35 FT LB	8MM	18 FT LB	23 FT LB
7/16	45 FT LB	60 FT LB	10MM	32 FT LB	45 FT LB
1/2	65 FT LB	90 FT LB	12MM	55 FT LB	75 FT LB
9/16	95 FT LB	130 FT LB	14MM	85 FT LB	120 FT LB
5/8	135 FT LB	175 FT LB	16MM	130 FT LB	165 FT LB
3/4	185 FT LB	280 FT LB	18MM	170 FT LB	240 FT LB

- The above specifications are not to be used when the bolt is being installed with a bushing.

**Seat Belts Save Lives, Please Wear Your Seat Belt.**