



2007 - 2014 Toyota Tundra 4.5" - 6" Suspension Lift Installation Instructions

REQUIRED TOOL LIST:

- * Safety Glasses
- * Metric / Standard Wrenches & Sockets
- * Allen Wrenches
- * Assorted Drill Bits
- * Floor Jack
- * Jack Stands
- * Measuring Tape
- * Torque Wrench
- * Reciprocating Saw (4WD Models)
- * Grinder (4WD Models)
- * Welding Machine (4WD Models)



Make sure you park the vehicle on a level concrete or asphalt surface. Many times a vehicle is not level (side-to-side) from the factory & is usually not noticed until a lift kit has been installed which makes the difference more visible. Using a measuring tape, measure the front & rear (both sides) from the ground up to the center of the fender opening above the axle. Record this information below for future reference.

Driver Side Front: _____

Passenger Side Front: _____

Driver Side Rear: _____

Passenger Side Rear: _____

IMPORTANT NOTES:

- OEM wheels can not be reused in the installation of this suspension lift. 17" diameter or larger wheels must be used to install this suspension lift.
- If larger tires (10% more than the OEM diameter) are installed, speedometer recalibration will be necessary. Contact your local Toyota dealer or an authorized dealer for details.
- After installation, a qualified alignment facility is required to align the vehicle to the OEM specifications.

Component Box Breakdown:

Part #: TU746A

Item #	Description	Qty
TU76L	TUNDRA, DRIVR KNUCKLE	1
TU76R	TUNDRA, PASS KNUCKLE	1
TU76FCM-B	TUNDRA FRT X-MEMBER	1
TU76RCM-B	TUNDRA REAR X-MEMBER	1

Item #	Description	Qty
TU76BSB-D	TUNDRA BUMP STOP DRIVER	1
TU76BSB-P	TUNDRA BUMP STOP PASS	1
H-BOX TU746A	HDWR BOX: TU746A COM BOX	1

Hardware Box Breakdown:

Part # H-BOX TU746A

Item #	Description	Qty
TU76SBL-L	SWAY BAR END LINK / DRIVER	1
TU76SBL-R	SWAY BAR END LINK / PASS	1
HB-TU746-BLE	HDWR BAG: BRAKE LINE EXT	1
HB-TU76-BS/DB	HDWR BAG: BUMP STOP/DIFF	1

Item #	Description	Qty
HB-TU76C	HDWR BAG: REAR X-MEM CAPS	1
HB-TU76-CM	HDWR BAG: F & R X-MEMBER	1
HB-TU76SSE	HDWR BAG: STEERING STP EXT	1

Hardware Bag Breakdown:

Part # HB-TU746-BLE

Item #	Description	Qty
F460BLE-F	BRAKE LINE BRACKET,FRONT	2
RBLE03-S	BRAKE LINE BRACKET,REAR	1
RBLE10-S	ABS LINE EXTENSION BRKT	1
RBLE60U-S	E-BRAKE BRACKET	2

Item #	Description	Qty
VH1410	VENT HOSE 1/4" X 10"	1
516X34CTBG5	5/16 X 3/4 COARSE THRD BOLT	6
516CTN	5/16 COARSE THRDLOCK NUT	6

Part # HB-TU76-BS/DB

Item #	Description	Qty
10X25MMB-1.25	10MM X 25MM METRIC BOLT	4
10MMN-1.25	10MM METRIC LOCK NUT	4
38SAEW	3/8 SAE WASHER	8
916X6FTB	9/16 X 6 FINE THREAD BOLT	2

Item #	Description	Qty
916X212FTB	9/16 X 2 1/2 FINE THREAD BOLT	1
916FTN	9/16 FINE THREAD LOCK NUT	3
12USSW	1/2 USS WASHER	2
916SAEW	9/16 SAE WASHER	4

Part # HB-TU76C

Item #	Description	Qty
TU76C-DS	REAR X-MEM FRAME CAP/DRV	1

Item #	Description	Qty
TU76C-PS	REAR X-MEM FRAME CAP/PAS	1

Part # HB-TU76-CM

Item #	Description	Qty
18X50MMB	18MM X 50MM METRIC BOLT	4
18MMFW	5/8 FLAT WASHER	8
18MMN	18MM METRIC LOCK NUT	4

Item #	Description	Qty
24X50MMB	24MM X 50MM METRIC BOLT	4
24MMFW	24MM FLAT WASHER	8
24MMN	24MM METRIC LOCK NUT	4

Part # HB-TU76SSE

Item #	Description	Qty
TU76SSE-S	STEERING STOP EXTENSION	2

Component Box Breakdown:

Part # TU745BH / TU760BH

Item #	Description	Qty	Item #	Description	Qty
TU760MS-B	FRONT STRUT SPACER	2	SBL20-L	SWAY BAR LWG BRKT-DRIVER (Included With TU760BH Box)	1
TU760CS-B	ALUM FRONT STRUT SPACER (Included With TU760BH Box)	2	SBL20-R	SWAY BAR LWG BRKT-PASS (Included With TU760BH Box)	1
TUCBL214	TUNDRA 2.25"CAR BRG LWR KT (Included With TU760BH Box)	1	HB-916	HDWR BAG:9/16 FINE THD NUTS	1
RB35T	3.5" NARROW REAR BLOCK (Included With TU745BH Box)	2	HB-SBL	HDWR BAG: SWAY BAR BRKTS (Included With TU760BH Box)	1
RBF425	4.25" FLAT REAR BLOCK (Included With TU760BH Box)	2	HB-TU760MS	HDWR BAG: STRUT SPCR NUTS	1
916X212X12U	9/16 X 2 1/2 X 12 U-BOLT SQ	4	H7066	HYDRO SHOCK W/RED BOOT	2
			I-TU746SP	INST SHEET: TU745BH/TU760BH	1

Hardware Bag Breakdown:

Part # TUCBL214 (Included With TU760BH Box)

Item #	Description	Qty	Item #	Description	Qty
TUCBL214-B	TUNDRA, 2.25" CAR BRG LWR	2	38USSW	3/8 USS WASHER	2
10X80MMB-1.25	10MM X 80MM METRIC BOLT	2			

Part # HB-916

Item #	Description	Qty
916FTN	9/16 FINE THREAD LOCK NUT	8

Part # HB-SBL (Included With TU760BH Box)

Item #	Description	Qty	Item #	Description	Qty
716X112FTB	7/16 X 1 1/2 FINE THREAD BOLT	4	716SAEW	7/16 SAE WASHER	8
716FTN	7/16 FINE THREAD LOCK NUT	4			

Part # HB-TU760MS

Item #	Description	Qty
10MMX1.5NFN	10MM METRIC FLANGE NUT	8

Front Installation:

1. With the vehicle on flat level ground, set the emergency brake & block the rear tires / wheels. Place a floor jack under the lower control arm front cross member & raise the front of the vehicle. Place jack stands under the frame rails, behind the front wheel wells & lower the frame onto the jack stands. **Note:** If the vehicle is equipped with a front skid plate, remove it at this time. This is in preparation for Step # 8.



2. Remove the front tires / wheels. (See Photo # 1)

3. Remove the OEM outer tie rod ends from the OEM steering knuckles. **Note:** It may be necessary to strike the side of the OEM steering knuckles with a hammer to dislodge the OEM outer tie rod ends. Be careful not to damage the OEM outer tie rod ends. (See Photo # 2)



4. Disconnect the OEM brake calipers from the OEM brake rotors & disconnect the OEM brake lines from the OEM upper control arms. (See Photo # 3) **Note:** Simply wire the OEM brake calipers out of the way, it will not be necessary to disconnect the OEM brake lines from the OEM brake calipers.



5. Remove the OEM sway bar end links. **6" Lift:** Remove the OEM sway bar. (See Photo # 4) Remove the OEM upper strut retaining nuts. (See Photo # 5)



6. Disconnect the OEM upper control arms from the OEM steering knuckles. **Note:** It may be necessary to strike the side of the OEM steering knuckles with a hammer to dislodge the OEM upper ball joints. Be careful not to damage the OEM upper ball joints. (See Photo # 6)



7. **4WD Models:** Remove the OEM cv-shaft nuts from the center of the OEM hub assemblies & disconnect the OEM cv-shafts from the OEM steering knuckles. (See Photo # 7)



8. Place a jack under the OEM control arms for support & disconnect the OEM lower control arms. Disconnect the OEM lower strut mounts & remove.
9. **4WD Models:** Support the front differential with a transmission jack. (See Photo # 8)
10. **4WD Models:** Remove the OEM front differential mounting bolts & remove the OEM front differential brackets. (See Photo # 9)



Photo # 8

11. **4WD Models:** It will be necessary to cut the OEM rear cross member with a reciprocating saw. The driver side will need to be cut for front drive shaft clearance. The measurement is 3 3/8" from the inside of the frame rail. (See Photo # 10)



Photo # 9

12. **4WD Models:** It will be necessary to cut the passenger side OEM rear cross member 2 1/2" from the OEM lower control arm mount. (See Photo # 11) **Note:** It will be necessary to grind down this area after cutting for the new Skyjacker cross member caps to be welded in place. (See Photos # 12 & # 13)



Photo # 12

13. The OEM alignment cam brackets (alignment ears) will need to be ground down for the installation of the new Skyjacker cross members. This will have to be done on the front side of both front & rear OEM lower control arm mounts. (See Photo # 14)



Photo # 10

14. Install the new Skyjacker front cross member using the supplied 24MM x 50MM bolts, washers, & nuts. **Note:** Do not tighten the hardware completely at this time.



Photo # 13



Photo # 11

The new front cross member should be installed with the bolt flanges on the front side of the OEM cross member flanges. (See Photo # 15)

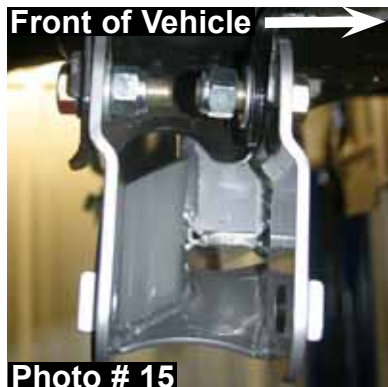


Photo # 15



Photo # 14

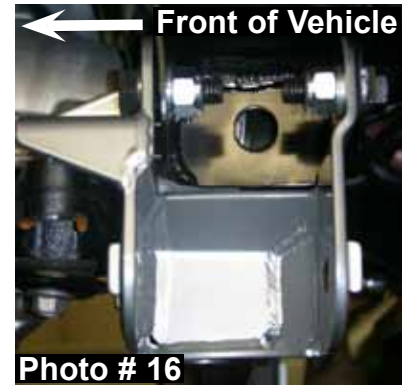
15. Install the new Skyjacker rear cross member using the supplied 18MM x 50MM bolts, washers, & nuts. **Note:** Do not tighten the hardware completely at this time. The new rear cross member should be installed with the bolt flanges on the front side of the OEM cross member flanges. (See Photo # 16)

16. **4WD Models:** Raise & safely support the front differential into place using the supplied 9/16" x 6" bolts, washers, & nuts. Loosely bolt the differential to the new Skyjacker front cross member. (See Photo # 17) Attach the OEM differential pinion support bracket, under the pinion, to the new rear cross member using the OEM hardware & the supplied 9/16" x 2 1/2" bolt, washers, & nut. (See Photos # 18 & # 19) Install the new Skyjacker differential vent hose & tighten all cross member & differential hardware at this time.

17. Remove the OEM hub bearing assemblies from the OEM steering knuckles & reinstall to the new Skyjacker steering knuckles using the OEM hardware. Make sure the OEM seals (4WD Models) or OEM hub plugs (2WD Models) are reinstalled square in the new Skyjacker steering knuckles. (See Photos # 20 & # 21)

18. Weld in place the new Skyjacker steering stop spacers. Match these new steering stop spacers with the contour of the OEM steering stops. Weld in place by placing a weld across the top & bottom of the supplied spacers. (See Photo # 22)

19. **6" Lift:** For upper strut mount alignment purposes, mark the location of the OEM upper strut mount & OEM coil spring prior to disassembly. Using a strut spring compressor, compress the coil spring of each OEM strut assembly. Remove the upper strut retaining nut & upper strut mount. (See Photo # 23)



20. **6" Lift:** Install the new Skyjacker aluminum coil spring spacer on the top of each OEM strut isolator pad. (See Photo # 24)

21. **6" Lift:** Install the OEM upper strut mount, aligning the marks made in Step # 19. Tighten the retaining nut & uncompress the OEM coil spring. (See Photo # 25)

22. Install the new Skyjacker strut spacer on the top of each OEM strut assembly using the OEM hardware. (See Photo # 26)

23. Install the strut / spacer assemblies by aligning the upper strut mount studs with the OEM mounting locations using the supplied 10mm nuts. (See Photo # 27)

24. Install the new Skyjacker bump stop brackets using the supplied 10mm x 25mm bolts. (See Photo # 28) Attach the OEM bump stops to the new bump stop brackets using the supplied 10mm nuts.

Note: The new bump stop brackets are side specific for passenger & driver side. (See Photo # 29)

25. Reinstall the OEM lower control arms to both the driver & passenger sides. Reinstall the OEM lower strut mounts to the OEM lower control arms.

26. **4WD Models:** Connect the OEM cv-axles. (See Photo # 30) Attach the new Skyjacker steering knuckles to the upper & lower OEM control arms using the OEM hardware.

27. Attach the OEM ABS lines to the OEM upper control arms & relocate the OEM ABS lines to the new Skyjacker steering knuckles.

28. **4WD Models:** Install the OEM cv-shaft nuts to the center of the OEM hub assemblies (See Photo # 31)



Photo # 24



Photo # 25



Photo # 26



Photo # 27



Photo # 28



Photo # 29



Photo # 31



Photo # 30

29. Install the new Skyjacker front brake line extension brackets using the OEM hardware & the supplied 5/16" x 3/4" bolts & nuts. (See Photo # 32)
30. To install the OEM outer tie rod ends to the new Skyjacker steering knuckles, the OEM outer tie rod ends will need to be swapped from driver to passenger & passenger to driver side. Attach the OEM outer tie rod ends to the new Skyjacker steering knuckles using the OEM hardware. Reinstall the OEM brake rotors, brake calipers, & etc.
31. **6" Lift:** Install the OEM sway bar using the new Skyjacker sway bar lowering brackets. The new sway bar lowering brackets will install between the OEM sway bar & the OEM mount on the frame using the OEM hardware. The OEM sway bar will be attached to the new sway bar lowering brackets using the supplied 7/16" x1 1/2" bolts, washers, & nuts. **Note:** The new sway bar lowering brackets should offset the OEM sway bar towards the front of the vehicle. (See Photo # 33)
32. Install the new Skyjacker sway bar end links with the pivoting end at the OEM sway bar. **Note:** The new sway bar end links are side specific for passenger & driver side. (See Photo # 34)
33. Install the front tires / wheels & lower the front of the vehicle to the ground.



Photo # 32



Photo # 33



Photo # 34

Rear Installation:

1. With the vehicle on flat level ground, block the front tires / wheels. Raise the rear of the vehicle & properly support using jack stands. Remove the rear tires / wheels.
2. Disconnect the OEM E-brake cables, ABS line, & rear brake lines from the rear differential.
3. Support the rear differential & remove the OEM rear shocks & u-bolts.
4. Install the new Skyjacker rear blocks & new Skyjacker u-bolts. **4.5" Lift:** Install the new Skyjacker rear blocks with the taller end of the block toward the rear bumper. **6" Lift:** Install the new Skyjacker rear blocks with the female hole of the new rear block offset towards the front of the vehicle. (See Photo # 35)
5. Install the new Skyjacker rear shocks using the supplied shock hardware & OEM hardware.

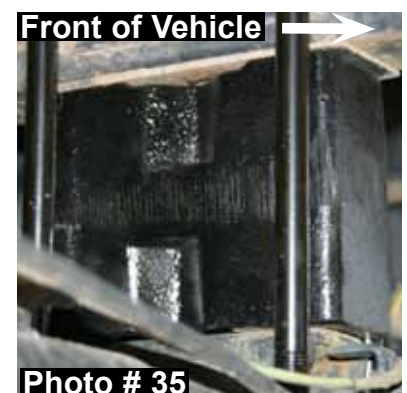


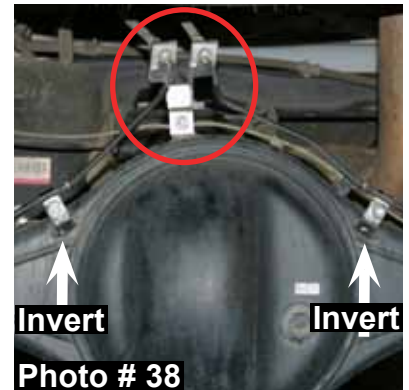
Photo # 35

6. Install the new Skyjacker E-brake cable brackets, ABS line bracket, & rear brake line bracket to the rear differential using the supplied 5/16" x 3/4" bolts & nuts. (See Photos # 36, # 37, & # 38) **Note:** The OEM rear brake line cable clamps must be inverted to raise the OEM brake line up from the rear differential. (See Photo # 38)
7. **6" Lift:** Models equipped with an OEM carrier bearing will need to install the new Skyjacker carrier bearing lowering spacers using the supplied 10mm x 80mm bolts & washers. (See Photo # 39)
8. Install the rear tires / wheels & lower the rear of the vehicle to the ground.



FINAL NOTES:

- After the installation is complete, double check that all nuts & bolts are tight. Refer to the following chart for the proper torque specifications. (Do not retighten the nuts & bolts where thread lock compound was used.)
- With the vehicle on the ground, cycle the steering lock to lock & inspect the steering, suspension, brake lines, front & rear drivelines, fuel lines, & wiring harnesses for proper operation, tightness, & adequate clearance.
- Have the headlights readjusted to the proper settings.
- Have a qualified alignment center realign the vehicle to the OEM specifications.
- After the first 100 miles, check all of the hardware for the proper torque & periodically thereafter.



<u>TORQUE SPECIFICATIONS</u>					
<u>INCH SYSTEM</u>			<u>METRIC SYSTEM</u>		
Bolt Size	Grade 5	Grade 8	Bolt Size	Class 8.8	Class 10.9
5/16	15 FT LB	20 FT LB	6MM	5 FT LB	9 FT LB
3/8	30 FT LB	35 FT LB	8MM	18 FT LB	23 FT LB
7/16	45 FT LB	60 FT LB	10MM	32 FT LB	45 FT LB
1/2	65 FT LB	90 FT LB	12MM	55 FT LB	75 FT LB
9/16	95 FT LB	130 FTLB	14MM	85 FT LB	120 FT LB
5/8	135 FT LB	175 FT LB	16MM	130 FT LB	165 FT LB
3/4	185 FT LB	280 FT LB	18MM	170 FT LB	240 FT LB

- The above specifications are not to be used when the bolt is being installed with a bushing.

Seat Belts Save Lives, Please Wear Your Seat Belt.