



2005 - 2015 Toyota Tacoma 1" - 3" Performance Strut Installation Instructions

REQUIRED TOOL LIST:

- Safety Glasses
- Metric / Standard Wrenches & Sockets
- Ball Joint Remover
- Tie Rod Remover
- Strut Spring Compressor
- Floor Jack
- Jack Stands
- Measuring Tape
- Torque Wrench



Before beginning the installation, thoroughly & completely read these instructions & the enclosed driver's WARNING NOTICE. Affix the WARNING decal in the passenger compartment in clear view of all occupants. Please refer to the Parts List to insure that all parts & hardware are received prior to the disassembly of the vehicle.

Park the vehicle on a level concrete or asphalt surface. Many times a vehicle is not level (side-to-side) from the factory & is usually not noticed until a lift kit has been installed, which makes the difference more visible. Using a measuring tape, measure the front & rear (both sides) from the ground up to the center of the fender opening above the axle. Record this information below for future reference.

Driver Side Front: _____

Passenger Side Front: _____

Driver Side Rear: _____

Passenger Side Rear: _____

Important Notes:

- This lift kit is **not designed** nor **will fit** Toyota Tacoma **T/X Baja** models.
- If larger tires (10% more than the OEM diameter) are installed, speedometer recalibration will be necessary. Contact your local Toyota dealer or an authorized dealer for details.
- After installation, a qualified alignment facility is required to align the vehicle to the OEM specifications.

Component Box Breakdown:

Part #: TC530STBB / TC530STBH / TC530STBM / TC530STBN

Item #	Description	Qty	Item #	Description	Qty
513STS	TOYOTA 1"-3" ADJ FRT STRUT	2	H7045	HYDRO SHOCK W/RED BOOT	2
RBF125	1.25" REAR LIFT BLOCK	2		(Included With TC530STBH Box)	
916X212X834U	9/16 X 2 1/2 X 8 3/4 U-BOLT	4	M9545	MONOTUBE SHOCK	2
TFDD2	TOYOTA DIFF DROP KIT	1		(Included With TC530STBM Box)	
HB-916	HDWR BAG: 9/16 FINE THR NUT	1	N8045	NITRO SHOCK W/RED BOOT	2
B8545	BLK MAX SHOCK W/BLK BOOT	2		(Included With TC530STBN Box)	
	(Included With TC530STBB Box)		I-TC530STB	INST SHEET: TC530STB	1

Hardware Breakdown:

Part # TFDD2

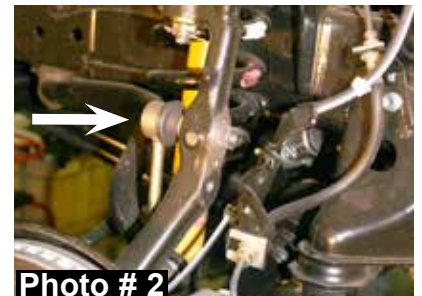
Item #	Description	Qty	Item #	Description	Qty
TCLS10-B	1" DIFF LOWERING SPACER	2	12X612CTBG5	1/2 X 6 1/2 COARSE THRD BOLT	2
CS0750	CRUSH SLEEVE / .750"	4	12SAEW	1/2 SAE WASHER	4
8X40MMB	8MM X 30MM METRIC BOLT	4	12CTN	1/2 COARSE THREAD LOCK NUT	2
516USSW	5/16 USS WASHER	4	I-TFDD2	INST SHEET: TFDD2	1

Part # HB-916

Item #	Description	Qty
916FTN	9/16 FINE THREAD LOCK NUT	8

Front Installation:

1. With the vehicle on flat level ground, set the emergency brake, & block the rear tires / wheels.
2. Raise the front of the vehicle & support the vehicle securely using jack stands.
3. Remove the front tires / wheels.
4. Remove the OEM ABS lines from the OEM upper A-arms & disconnect the OEM ABS / brake lines from the OEM steering knuckles. (See Photo # 1)
5. Disconnect the OEM sway bar end links from the OEM steering knuckles. (See Photo # 2)



6. Disconnect the OEM outer tie rods from the OEM steering knuckles using a tie rod remover or other suitable tool. (See Photo # 3)

7. Disconnect the lower strut mounts from the OEM lower A-arms.

8. Disconnect the OEM upper A-arms from the OEM steering knuckles using a ball joint remover or other suitable tool. (See Photo # 4)

9. Remove the upper strut mounting bolts from the OEM upper frame mounts & remove the OEM strut assemblies. (See Photo # 5)

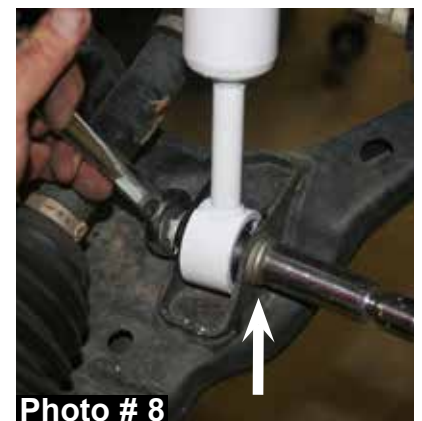
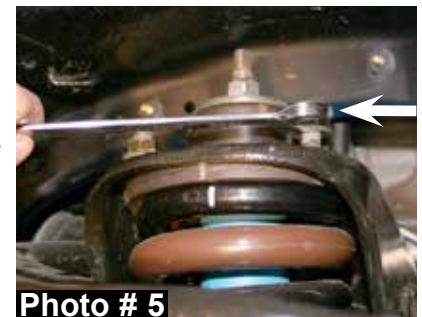
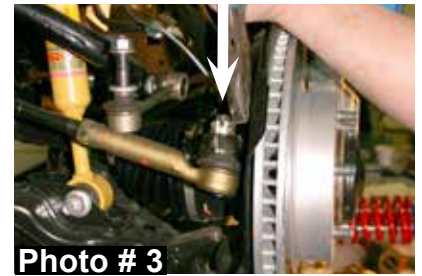
10. Using a strut spring compressor, unload the tension on the OEM upper mounts of the OEM strut assemblies. Remove the upper strut retaining nuts & remove the OEM struts from the bottom strut assemblies. (See Photo # 6)

Note: There are six snap ring grooves located on the new Skyjacker strut body for 1" to 3" lift heights. The ring is installed in the second groove from the top when shipped. This will yield 2.5" -3" of lift. The upper groove is only to be used when 2.5" - 3" of lift is desired, after aftermarket accessories have been added that weigh the front of the vehicle down (ie. winch, after market bumper, & etc). The lower grooves can be used if you would like to keep the OEM rake of the vehicle (front of vehicle lower than the rear). **Once the coil spring seat retaining ring has been installed, check all suspension components for any contact or interference. If suspension component contact or interference is present, lower the coil spring seat by lowering the coil spring seat retaining ring until no contact or interference is present.**

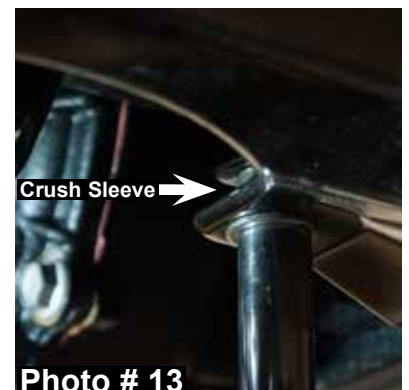
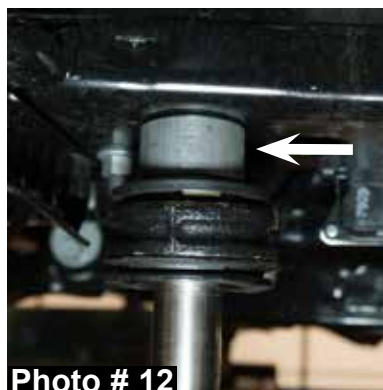
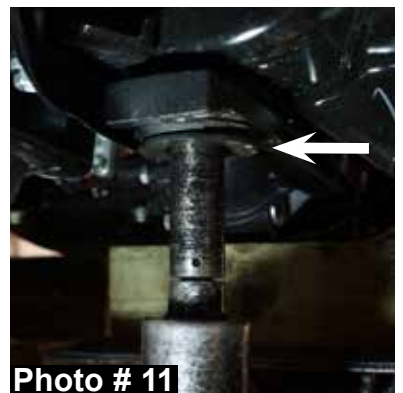
11. Assemble the strut assemblies using the new Skyjacker struts. (See Photo # 7) **Note:** The OEM upper stem bushings will be reused.

12. Connect the new strut assemblies to the OEM lower A-arms using the OEM hardware. **Note:** Install the OEM bolts from the rear, towards the front of the vehicle. (See Photo # 8)

13. Connect the OEM upper strut mounts to the frame using the OEM hardware. Connect the OEM upper A-arms to the OEM steering knuckles using the OEM hardware. **Note:** It may be necessary to use a pry bar to pull the OEM A-arms down enough to reattach.

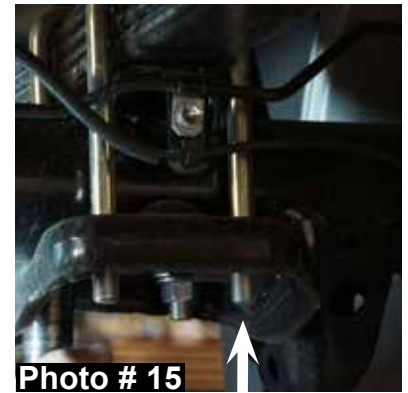
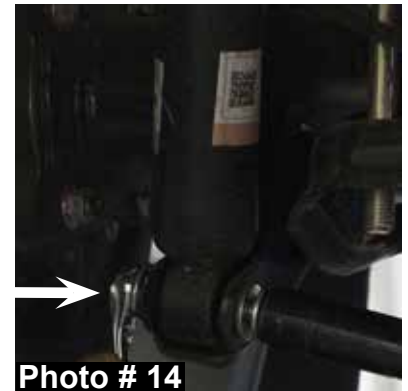


14. Connect the OEM outer tie rods to the OEM steering knuckles using the OEM hardware.
15. Connect the OEM ABS / brake lines to the OEM upper A-arms using the OEM hardware. (See Photo # 9)
16. Connect the OEM sway bar end links to the OEM steering knuckles using the OEM hardware. (See Photo # 9)
17. Remove the OEM front skid plate bolts. (See Photo # 10)
18. If equipped, remove OEM rear skid plate bolts.
19. Support the front differential using a floor jack.
20. Remove the OEM bolts from the OEM cross member & front differential mounts. (See Photo # 11)
21. Lower the front differential & install the new Skyjacker differential lowering spacers between the OEM cross member & front differential mounts using the large OEM washers, supplied 1/2" x 6 1/2" coarse thread bolts, washers, & nuts. (See Photo # 12)
22. Remove the floor jack from under the front differential.
23. Install the OEM front skid plate at the front mounting locations using the OEM hardware.
24. Install the OEM front skid plate at the rear mounting locations using the supplied crush sleeves, 8mm x 40mm bolts, & washers. (See Photo # 13) **Note:** One new Skyjacker crush sleeve will be placed between the OEM front skid plate & each OEM cross member / radiator support bracket.
25. If equipped, install the OEM rear skid plate at the front mounting locations using the supplied crush sleeves, 8mm x 40mm bolts, & washers.
26. If equipped, install the OEM rear skid plate at the rear mounting locations using the OEM hardware.
27. Install the front tires / wheels & lower the front of the vehicle to the ground.



Rear Installation:

1. Block the front tires / wheels, raise the rear of the vehicle, & support securely using jack stands.
2. While supporting the rear differential, remove the rear tires / wheels.
3. Remove the OEM rear shocks & disconnect the OEM brake line bracket from the rear differential. (See Photo # 14)
4. Remove the OEM u-bolts. (See Photo # 15) **Note:** The rear differential will now be free to move, support securely using a floor jack.
5. Lower the rear differential & install the new Skyjacker rear lift blocks between the axle pad & the OEM rear leaf spring. (See Photo # 16)
6. Raise the rear differential to the rear leaf springs. **Note:** Be sure the rear leaf spring center tie bolts & block pins align in the proper holes & are completely seated.
7. Install the new Skyjacker u-bolts using the supplied 9/16" fine thread nuts.
8. Connect the OEM brake line bracket to the rear differential.
9. Install the new Skyjacker rear shocks using the OEM & supplied hardware.
10. Install the rear tires / wheels & lower the rear of the vehicle to the ground.



Final Notes:

- After the installation is complete, double check that all nuts & bolts are tight. Refer to the following chart for the proper torque specifications. (Do not retighten the nuts & bolts where thread lock compound was used.)
- With the vehicle placed on the ground, cycle the steering lock to lock & inspect the steering, suspension, brake lines, front & rear drivelines, fuel lines, & wiring harnesses for proper operation, tightness, & adequate clearance.
- Have the headlights readjusted to the proper settings.
- Have a qualified alignment center align the vehicle to the OEM specifications.
- After the first 100 miles, check all of the hardware for the proper torque & periodically thereafter.

TORQUE SPECIFICATIONS

<u>INCH SYSTEM</u>			<u>METRIC SYSTEM</u>		
Bolt Size	Grade 5	Grade 8	Bolt Size	Class 8.8	Class 10.9
5/16	15 FT LB	20 FT LB	6MM	5 FT LB	9 FT LB
3/8	30 FT LB	35 FT LB	8MM	18 FT LB	23 FT LB
7/16	45 FT LB	60 FT LB	10MM	32 FT LB	45 FT LB
1/2	65 FT LB	90 FT LB	12MM	55 FT LB	75 FT LB
9/16	95 FT LB	130 FTLB	14MM	85 FT LB	120 FT LB
5/8	135 FT LB	175 FT LB	16MM	130 FT LB	165 FT LB
3/4	185 FT LB	280 FT LB	18MM	170 FT LB	240 FT LB

- The above specifications are not to be used when the bolt is being installed with a bushing.

Seat Belts Save Lives, Please Wear Your Seat Belt.