



# 2005 - 2015 Toyota Tacoma 3" Performance Strut Kit Upper A-Arm Kit Installation Instructions

### REQUIRED TOOL LIST:

- Safety Glasses
- Metric / Standard Wrenches & Sockets
- Ball Joint Remover
- Tie Rod Remover
- Strut Spring Compressor
- Fastener Removal Tool (A-Arm Install)
- Adjustable Wrench (A-Arm Install)
- Grease Gun (A-Arm Install)
- Floor Jack / Jack Stands
- Measuring Tape
- Torque Wrench



Before beginning the installation, thoroughly & completely read these instructions & the enclosed driver's WARNING NOTICE. Affix the WARNING decal in the passenger compartment in clear view of all occupants.

Park the vehicle on a level concrete or asphalt surface. Many times a vehicle is not level (side-to-side) from the factory & is usually not noticed until a lift kit has been installed, which makes the difference more visible. Using a measuring tape, measure the front & rear (both sides) from the ground up to the center of the fender opening above the axle. Record this information below for future reference.

Driver Side Front: \_\_\_\_\_

Passenger Side Front: \_\_\_\_\_

Driver Side Rear: \_\_\_\_\_

Passenger Side Rear: \_\_\_\_\_

### Important Notes:

- This lift kit is **not designed** nor **will fit** Toyota Tacoma **TRD PRO** & **T/X Baja** models or models equipped with **5 Lugs** or **XSP-X**.
- If larger tires (10% more than the OEM diameter) are installed, speedometer recalibration will be necessary. Contact your local Toyota dealer or an authorized dealer for details.
- After installation, a qualified alignment facility is required to align the vehicle to the OEM specifications.

## Component Box Breakdown:

### Part #: TC530STB / TC530STBB / TC530STBH / TC530STBM / TC530STBN / TC530STUB / TC530STUH / TC530STUM / TC530STUMS / TC530STUN

Item #	Description	Qty	Item #	Description	Qty
513STS	TOYOTA ADJ FRT STRUT	2	T53UCA-R	PASSENGER UPPER A-ARM	1
RBF125	1.25 REAR LIFT BLOCK	2		<b>(Included With STU Boxes)</b>	
	<b>(Included With All Boxes Except TC530STUMS Box)</b>		HB-14ARM	HDWR BAG: 1/4 A-ARM	1
916X212X834U	9/16 X 2 1/2 X 8 3/4 U-BOLT	4	B8545	BLK MAX SHOCK W/BLK BOOT	2
	<b>(Included With All Boxes Except TC530STUMS Box)</b>			<b>(Included With BB &amp; UB Boxes)</b>	
916X212X7U	9/16 X 2 1/2 X 7 U-BOLT	4	H7045	HYDRO SHOCK W/RED BOOT	2
	<b>(Included With TC530STUMS Box)</b>			<b>(Included With BH &amp; UH Boxes)</b>	
TFDD2	TOYOTA DIFF DROP KIT	1	M9545	MONOTUBE SHOCK	2
HB-916	HDWR BAG: 9/16 FINE THR NUT	1		<b>(Included With BM &amp; UM Boxes)</b>	
T53UCA-L	DRIVER UPPER A-ARM	1	N8045	NITRO SHOCK W/RED BOOT	2
	<b>(Included With STU Boxes)</b>			<b>(Included With BN &amp; UN Boxes)</b>	
			I-TC530STB	INST SHEET: TC530STB	1

## Hardware Breakdown:

### Part # TFDD2

Item #	Description	Qty	Item #	Description	Qty
TCLS10-B	DIFF LOWERING SPACER	2	12X612CTBG5	1/2 X 6 1/2 COARSE THRD BOLT	2
CS0750	CRUSH SLEEVE	4	12SAEW	1/2 SAE WASHER	4
8X40MMB	8MM X 30MM METRIC BOLT	4	12CTN	1/2 COARSE THREAD LOCK NUT	2
516USSW	5/16 USS WASHER	4	I-TFDD2	INST SHEET: TFDD2	1

### Part # HB-916

Item #	Description	Qty
916FTN	9/16 FINE THREAD LOCK NUT	8

### Part # HB-14ARM (Included With STU Boxes)

Item #	Description	Qty	Item #	Description	Qty
14CTN	1/4 COARSE THREAD LOCK NUT	2	14SAEW	1/4 SAE WASHER	2

## Front Installation:

1. With the vehicle on flat level ground, set the emergency brake, & block the rear tires / wheels.
2. Raise the front of the vehicle & support the vehicle securely using jack stands.
3. Remove the front tires / wheels.
4. Remove the OEM ABS lines from the OEM upper A-arms & disconnect the OEM ABS / brake lines from the OEM steering knuckles. (See Photo # 1)



5. Disconnect the OEM sway bar end links from the OEM steering knuckles. (See Photo # 2)
6. Disconnect the OEM outer tie rods from the OEM steering knuckles using a tie rod remover or other suitable tool. (See Photo # 3)
7. Disconnect the lower strut mounts from the OEM lower A-arms.
8. Disconnect the OEM upper A-arms from the OEM steering knuckles using a ball joint remover or other suitable tool. (See Photo # 4)

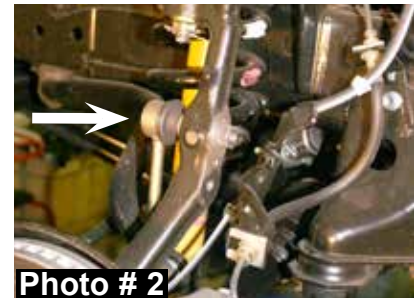


Photo # 2

**If installing a kit with the optional Skyjacker upper A-arms proceed to Step # 9, otherwise proceed to Step # 14.**

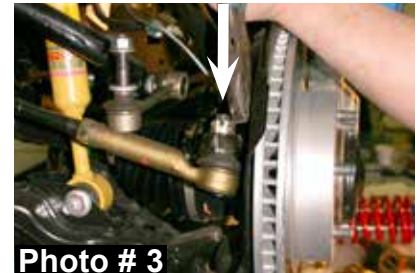


Photo # 3

9. Remove the OEM front inner fender liners using a fastener removal tool or other suitable tool. (See Photo # 5)

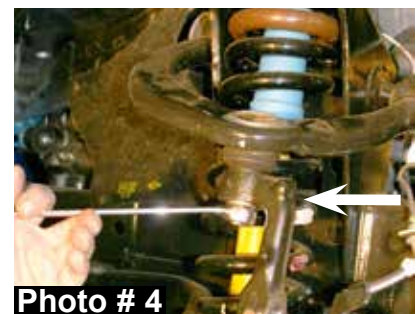


Photo # 4

10. Remove the OEM nuts & washers from the OEM upper A-arms. (See Photo # 6)

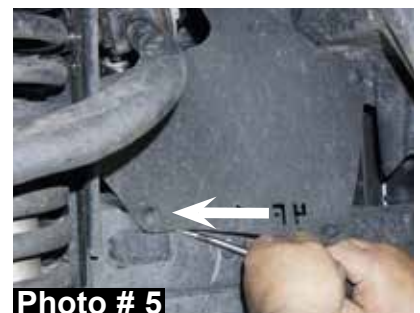


Photo # 5

11. Push the OEM upper A-arm bolts forward until they contact the body & mark.

12. Bend the body outward at the previously made marks enough for the OEM upper A-arm bolts to clear the body using an adjustable wrench or other suitable tool & remove the OEM upper A-arms. (See Photo # 7)

13. Install the new Skyjacker upper A-arms using the OEM hardware. (See Photo # 8)

14. Remove the upper strut mounting bolts from the OEM upper frame mounts & remove the OEM strut assemblies. (See Photo # 9)



Photo # 6



Photo # 7



Photo # 8



Photo # 9

15. Using a strut spring compressor, unload the tension on the OEM upper mounts of the OEM strut assemblies. Remove the upper strut retaining nuts & remove the OEM struts from the bottom strut assemblies. (See Photo # 10)



Photo # 10

**Note:** There are six snap ring grooves located on the new Skyjacker strut body for 1" to 3" lift heights. The ring is installed in the second groove from the top when shipped. This will yield 2.5" - 3" of lift. The upper groove is only to be used when 2.5" - 3" of lift is desired, after aftermarket accessories have been added that weigh the front of the vehicle down (ie. winch, after market bumper, & etc). The lower grooves can be used if you would like to keep the OEM rake of the vehicle (front of vehicle lower than the rear). **Once the coil spring seat retaining ring has been installed, check all suspension components for any contact or interference. If suspension component contact or interference is present, lower the coil spring seat by lowering the coil spring seat retaining ring until no contact or interference is present.**

16. Assemble the strut assemblies using the new Skyjacker struts. (See Photo # 11) **Note:** The OEM upper stem bushings will be reused.



Photo # 11

17. Connect the new strut assemblies to the OEM lower A-arms using the OEM hardware. **Note:** Install the OEM bolts from the rear, towards the front of the vehicle. (See Photo # 12)

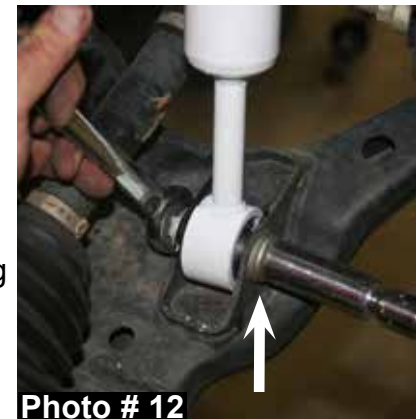


Photo # 12

18. Connect the OEM upper strut mounts to the frame using the OEM hardware.

19. Connect the OEM upper A-arms to the OEM steering knuckles using the OEM or supplied hardware.

20. **Kits with new Skyjacker upper A-arms:** Connect the new Skyjacker upper A-arms to the OEM steering knuckles using the supplied hardware & grease the new Skyjacker upper A-arm ball joints using a grease gun. (See Photo # 13)



Photo # 13

21. Connect the OEM outer tie rods to the OEM steering knuckles using the OEM hardware.

22. Connect the OEM ABS / brake lines to the OEM upper A-arms using the OEM hardware.

23. **Kits with new Skyjacker upper A-arms:** Connect the OEM ABS / brake lines to the new Skyjacker upper A-arms using the supplied 1/4" nuts & 1/4 washers & install the OEM front inner fender liners using the OEM hardware.

24. Connect the OEM sway bar end links to the OEM steering knuckles using the OEM hardware. (See Photo # 14)

25. Remove the OEM front skid plate bolts. (See Photo # 15)

26. If equipped, remove OEM rear skid plate bolts.

27. Support the front differential using a floor jack.

28. Remove the OEM bolts from the OEM cross member & front differential mounts. (See Photo # 16)

29. Lower the front differential & install the new Skyjacker differential lowering spacers between the OEM cross member & front differential mounts using the large OEM washers, supplied 1/2" x 6 1/2" coarse thread bolts, washers, & nuts. (See Photo # 17)

30. Remove the floor jack from under the front differential.

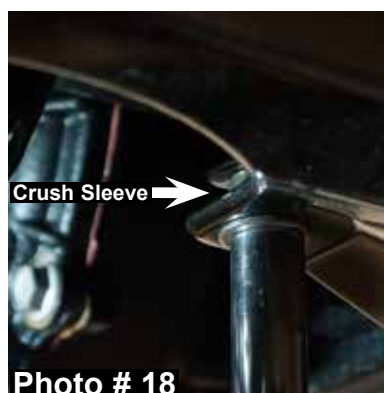
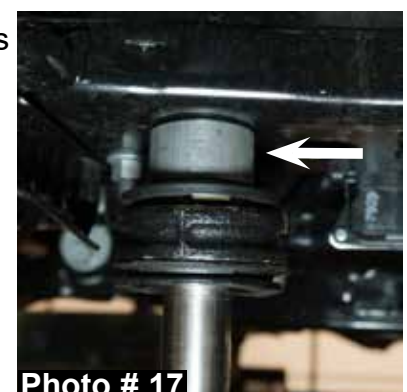
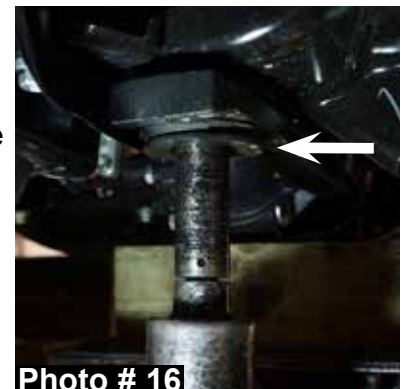
31. Install the OEM front skid plate at the front mounting locations using the OEM hardware.

32. Install the OEM front skid plate at the rear mounting locations using the supplied crush sleeves, 8mm x 40mm bolts, & washers. (See Photo # 18) **Note:** One new Skyjacker crush sleeve will be placed between the OEM front skid plate & each OEM cross member / radiator support bracket.

33. If equipped, install the OEM rear skid plate at the front mounting locations using the supplied crush sleeves, 8mm x 40mm bolts, & washers.

34. If equipped, install the OEM rear skid plate at the rear mounting locations using the OEM hardware.

35. Install the front tires / wheels & lower the front of the vehicle to the ground.



## **Rear Installation:**

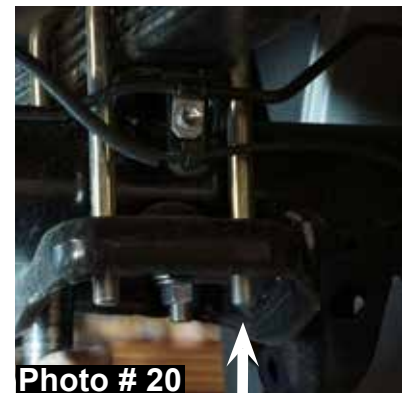
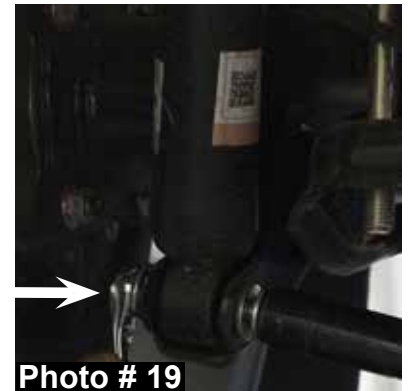
1. Block the front tires / wheels, raise the rear of the vehicle, & support securely using jack stands.
2. While supporting the rear differential, remove the rear tires / wheels.
3. Remove the OEM rear shocks & disconnect the OEM brake line bracket from the rear differential. (See Photo # 19)
4. Remove the OEM u-bolts. (See Photo # 20) **Note:** The rear differential will now be free to move, support securely using a floor jack.

### **If installing a system with new Skyjacker rear leaf springs proceed to Step # 7.**

5. **Rear Block Installation:** Lower the rear differential & install the new Skyjacker rear lift blocks between the axle pad & the OEM rear leaf spring. (See Photo # 21)
6. Raise the rear differential to the OEM rear leaf springs. **Note:** Be sure the OEM rear leaf spring center tie bolts & Skyjacker block pins align in the proper holes & are completely seated. (Proceed to Step # 9)
7. **Rear Leaf Spring Installation:** Disconnect the E-brake cable from the OEM rear leaf spring. Remove the OEM rear leaf springs & install the new Skyjacker rear leaf springs.
8. Raise the rear axle & connect the E-brake cable to the OEM leaf spring using the OEM hardware.
9. Install the new Skyjacker u-bolts using the supplied 9/16" fine thread nuts.
10. Connect the OEM brake line bracket to the rear differential.
11. Install the new Skyjacker rear shocks using the OEM & supplied hardware.
12. Install the rear tires / wheels & lower the rear of the vehicle to the ground.

### **Final Notes:**

- After the installation is complete, double check that all nuts & bolts are tight. Refer to the following chart for the proper torque specifications. (Do not retighten the nuts & bolts where thread lock compound was used.)



- With the vehicle placed on the ground, cycle the steering lock to lock & inspect the steering, suspension, brake lines, front & rear drivelines, fuel lines, & wiring harnesses for proper operation, tightness, & adequate clearance.
- Have the headlights readjusted to the proper settings.
- Have a qualified alignment center align the vehicle to the OEM specifications.
- After the first 100 miles, check all hardware for the proper torque & periodically thereafter.

<b>TORQUE SPECIFICATIONS</b>					
<b><u>INCH SYSTEM</u></b>			<b><u>METRIC SYSTEM</u></b>		
<b>Bolt Size</b>	<b>Grade 5</b>	<b>Grade 8</b>	<b>Bolt Size</b>	<b>Class 8.8</b>	<b>Class 10.9</b>
5/16	15 FT LB	20 FT LB	6MM	5 FT LB	9 FT LB
3/8	30 FT LB	35 FT LB	8MM	18 FT LB	23 FT LB
7/16	45 FT LB	60 FT LB	10MM	32 FT LB	45 FT LB
1/2	65 FT LB	90 FT LB	12MM	55 FT LB	75 FT LB
9/16	95 FT LB	130 FTLB	14MM	85 FT LB	120 FT LB
5/8	135 FT LB	175 FT LB	16MM	130 FT LB	165 FT LB
3/4	185 FT LB	280 FT LB	18MM	170 FT LB	240 FT LB

- The above specifications are not to be used when the bolt is being installed with a bushing.

**Seat Belts Save Lives, Please Wear Your Seat Belt.**