



2003 - 2016 Toyota 4Runner
2007 - 2014 Toyota FJ Cruiser
2" - 3" Coil-Over Kit
Installation Instructions

REQUIRED TOOL LIST:

- Safety Glasses
- Metric / Standard Wrenches & Sockets
- Drill / 1/2" Drill Bit
- Ball Joint Remover
- Tie Rod Remover
- Floor Jack
- Jack Stands
- Measuring Tape
- Torque Wrench



Before beginning the installation, thoroughly & completely read these instructions & the enclosed driver's WARNING NOTICE. Affix the WARNING decal in the passenger compartment in clear view of all occupants. Please refer to the Parts List to insure that all parts & hardware are received prior to the disassembly of the vehicle.

Park the vehicle on a level concrete or asphalt surface. Many times a vehicle is not level (side-to-side) from the factory & is usually not noticed until a lift kit has been installed, which makes the difference more visible. Using a measuring tape, measure the front & rear (both sides) from the ground up to the center of the fender opening above the axle. Record this information below for future reference.

Driver Side Front: _____

Passenger Side Front: _____

Driver Side Rear: _____

Passenger Side Rear: _____

Important Notes:

- This lift kit is **not designed** nor **will fit** Toyota 4Runner models with **X-REAS** or **KDSS** packages.
- **Do not** adjust models with **manual hubs** more than 2" of lift above the OEM height.
- If larger tires (10% more than the OEM diameter) are installed, speedometer recalibration will be necessary. Contact your local Toyota dealer or an authorized dealer for details.
- After installation, a qualified alignment facility is required to align the vehicle to the OEM specifications.

Component Box Breakdown:

Part #: FJ730 / FJ730BM / T4330BM

Item #	Description	Qty	Item #	Description	Qty
TOY20153-S	TOYOTA C/O COIL SPRING	2	TFDD2	TOYOTA DIFF DROP KIT	1
SKY201-S	TOYOTA COIL-OVER SHOCK	2		(Included With T4330BM Box)	
FJ25RS	FJ CRUISER REAR COIL SPRING	2	SBE301-L	SWAY BAR END LINK	2
	(Included With FJ730 Boxes)		HB-SBE702	HDWR BAG : SBE702	1
T422RS	4RUNNER REAR COIL SPRING	2	HB-FJ730	HDWR BAG: FJ730 / T4330	1
	(Included With T4330BM Box)		M9598	MONOTUBE SHOCK	2
T5USM-B	UPPER SHOCK MOUNT	2		(Included With BM Boxes)	
T5SBB-S	SWAY BAR LOWER BLOCK	2			

Hardware Breakdown:

Part # TFDD2 (Included With T4330BM Box)

Item #	Description	Qty	Item #	Description	Qty
TCLS10-B	1" DIFF LOWERING SPACER	2	12X612CTBG5	1/2 X 6 1/2 COARSE THRD BOLT	2
CS0750	CRUSH SLEEVE / .750"	4	12SAEW	1/2 SAE WASHER	4
8X40MMB	8MM X 30MM METRIC BOLT	4	12CTN	1/2 COARSE THREAD LOCK NUT	2
516USSW	5/16 USS WASHER	4	I-TFDD2	INST SHEET: TFDD2	1

Part # HB-SBE702

Item #	Description	Qty	Item #	Description	Qty
141509	SLEEVE, 1.50" LONG	2	12X3FTB	1/2 X 3 FINE THREAD BOLT	2
HOURGLASS 5/8	5/8 SHOCK BUSHING	2	12FTN	1/2 FINE THREAD LOCK NUT	2
142120	STAB WASH PKG	2	12SAEW	1/2 SAE WASHER	4
STEM BUSH-SHK	STEM BUSHING-SHOCK	4			

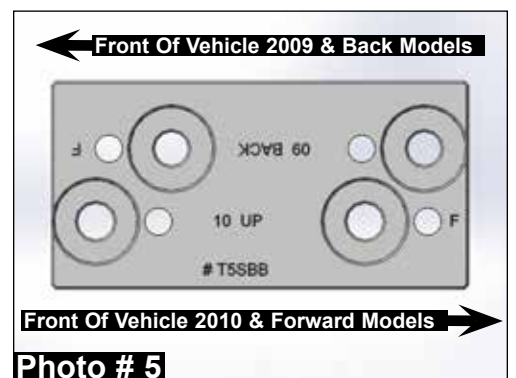
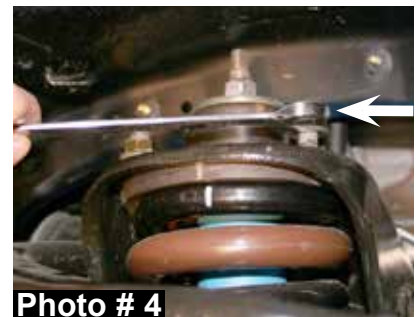
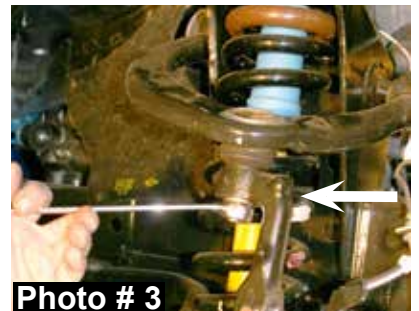
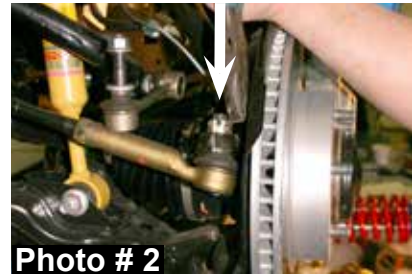
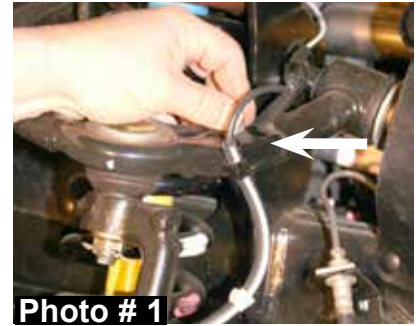
Part # HB-FJ730

Item #	Description	Qty	Item #	Description	Qty
SW201	SPANNER WRENCH	1	716FTN	7/16 FINE THREAD LOCK NUT	6
10X20MMB	10MM X 20MM METRIC BOLT	4	12X212FTB	1/2 X 2 1/2 FINE THREAD BOLT	2
38SAEW	3/8 SAE WASHER	4	12SAEW	1/2 SAE WASHER	4
716X1FTB	7/16 X 1 FINE THREAD BOLT	6	12FTN	1/2 FINE THREAD LOCK NUT	2
716SAEW	7/16 SAE WASHER	12	916XTFW	9/16 EXTRA THICK WASHER	2

Front Installation:

1. With the vehicle on flat level ground, set the emergency brake, & block the rear tires / wheels.
2. Raise the front of the vehicle & support the vehicle securely using jack stands.

3. Remove the front tires / wheels.
4. Disconnect the OEM ABS lines from the OEM upper A-arms & disconnect the OEM ABS / brake lines from the OEM steering knuckles. (See Photo # 1)
5. Disconnect the OEM sway bar end links from the OEM sway bar.
6. Disconnect the OEM outer tie rods from the OEM steering knuckles using a tie rod remover or other suitable tool. (See Photo # 2)
7. Disconnect the lower strut mounts from the OEM lower A-arms.
8. Disconnect the OEM upper A-arms from the OEM steering knuckles using a ball joint remover or other suitable tool. (See Photo # 3)
9. Remove the upper strut mounting bolts from the OEM upper frame mounts & remove the OEM strut assemblies. (See Photo # 4)
10. Assemble the new Skyjacker coil-over shocks using the supplied coil springs.
11. Install the new Skyjacker upper mounting brackets to each new Skyjacker coil-over shock assembly using the supplied 1/2" x 2 1/2" fine thread bolts, washers, & nuts.
12. Install the new Skyjacker coil-over shock assemblies to each OEM upper mount using the supplied 7/16" x 1" fine thread bolts, washers, & nuts.
13. Install the new Skyjacker coil-over shock assemblies to each OEM lower A-arm using the OEM hardware.
14. Connect the OEM upper A-arms to the OEM steering knuckles using the OEM hardware. **Note:** It may be necessary to use a pry bar to pull the OEM A-arms down enough to reattach.
15. Disconnect the OEM sway bar from the frame & install the new Skyjacker sway bar relocation brackets to the frame with the engraved "**F**" toward the front of the vehicle using the OEM hardware through the counter sunk holes of the new sway bar relocation brackets. (See Photo # 5) **Note:** 2009 & back models will use the "**09 BACK**" side of the new sway bar relocation brackets & 2010 & forward models will use the "**10 UP**" side.



16. Attach the OEM sway bar to the forward holes of the Skyjacker sway bar relocation brackets using the supplied 10mm x 20 mm bolts & washers. (See Photo # 7)

17. Install one supplied 9/16" extra thick washer onto the disconnected / sway bar end of each OEM sway bar end link & attach the OEM sway bar end links to the OEM sway bar using the OEM hardware.
Note: The new 9/16" extra thick washers will allow for adequate clearance between the OEM sway bar end links & new Skyjacker coil springs.

18. Connect the OEM outer tie rods to the OEM steering knuckles using the OEM hardware.

19. Connect the OEM ABS lines to the OEM upper A-arms & connect the OEM ABS / brake lines to the OEM steering knuckles using the OEM hardware.

Note: 2007 - 2014 Toyota FJ Cruiser Models Proceed to Step # 30.

20. Remove the OEM front skid plate bolts. (See Photo # 7)

21. If equipped, remove OEM rear skid plate bolts.

22. Support the front differential using a floor jack.

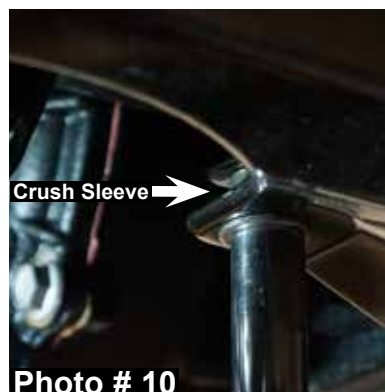
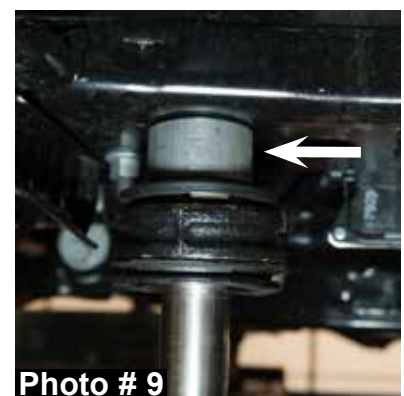
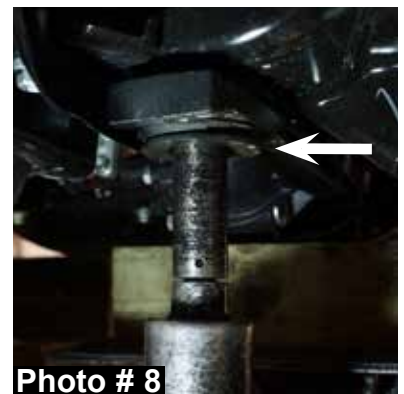
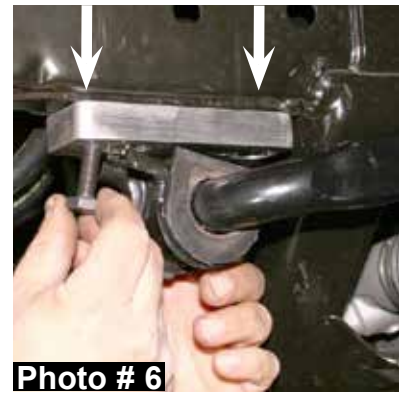
23. Remove the OEM bolts from the OEM cross member & front differential mounts. (See Photo # 8)

24. Lower the front differential & install the new Skyjacker differential lowering spacers between the OEM cross member & front differential mounts using the large OEM washers, supplied 1/2" x 6 1/2" coarse thread bolts, washers, & nuts. (See Photo # 12)

25. Remove the floor jack from under the front differential.

26. Install the OEM front skid plate at the front mounting locations using the OEM hardware.

27. Install the OEM front skid plate at the rear mounting locations using the supplied crush sleeves, 8mm x 40mm bolts, & washers. (See Photo # 9) **Note:** One new Skyjacker crush sleeve will be placed between the OEM front skid plate & each OEM cross member / radiator support bracket.



28. If equipped, install the OEM rear skid plate at the front mounting locations using the supplied crush sleeves, 8mm x 40mm bolts, & washers.
29. If equipped, install the OEM rear skid plate at the rear mounting locations using the OEM hardware.
30. Install the front tires / wheels & lower the front of the vehicle to the ground.

Note: Adjust each new Skyjacker coil-over shock assembly to 19 7/8" center to center using the supplied spanner wrench. (See Photo # 11) Adjusting to 19 7/8" will yield approximately 2.5" - 3" of lift.

Rear Installation:

1. Block the front tires / wheels, raise the rear of the vehicle, & support securely using jack stands.
2. While supporting the rear differential, remove the rear tires / wheels.
3. Remove the OEM rear shocks & OEM rear sway bar end links. (See Photo # 12)
4. Disconnect the OEM rear brake line brackets from the rear differential.
5. Disconnect the OEM rear track bar from the OEM frame bracket. (See Photo # 13)
6. Lower the rear differential & remove the OEM rear coil springs.
7. Install the new Skyjacker rear coil springs using the OEM isolators / bump stops. (See Photo # 14)
8. Raise the rear differential to the new Skyjacker rear coil springs & attach the OEM rear track bar to the OEM frame bracket.
9. Connect the OEM rear brake line brackets to the rear differential.

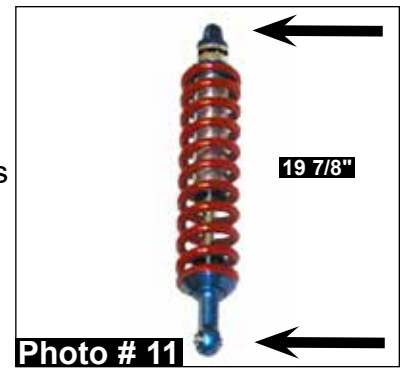


Photo # 11

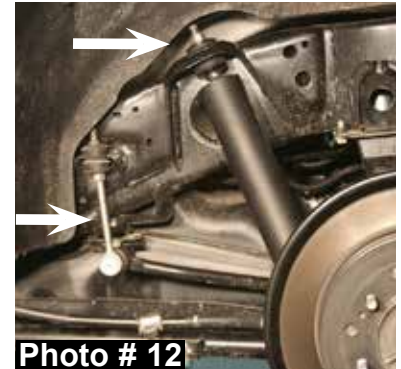


Photo # 12

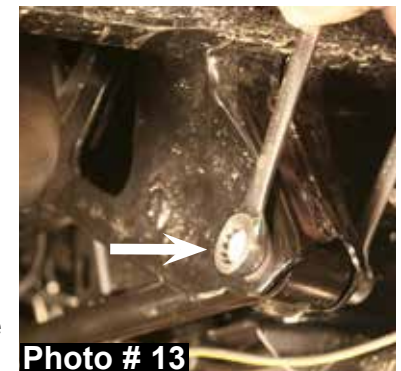


Photo # 13



Photo # 14

10. Install the new Skyjacker rear sway bar end links using the supplied bushings, sleeves, 1/2" x 3" fine thread bolts, washers, & nuts. (See Photo # 15) **Note:** Some models will require the OEM sway bar eyelet to be drilled using a 1/2" drill bit. (See Photo # 16)

11. Install the new Skyjacker rear shocks using the OEM & supplied hardware. (See Photo # 17)

12. Install the rear tires / wheels & lower the rear of the vehicle to the ground.

Final Notes:

- After the installation is complete, double check that all nuts & bolts are tight. Refer to the following chart for the proper torque specifications. (Do not retighten the nuts & bolts where thread lock compound was used.)
- With the vehicle placed on the ground, cycle the steering lock to lock & inspect the steering, suspension, brake lines, front & rear drivelines, fuel lines, & wiring harnesses for proper operation, tightness, & adequate clearance.
- Have the headlights readjusted to the proper settings.
- Have a qualified alignment center align the vehicle to the OEM specifications.
- After the first 100 miles, check all of the hardware for the proper torque & periodically thereafter.



Photo # 15



Photo # 16



Photo # 17

TORQUE SPECIFICATIONS

<u>INCH SYSTEM</u>			<u>METRIC SYSTEM</u>		
Bolt Size	Grade 5	Grade 8	Bolt Size	Class 8.8	Class 10.9
5/16	15 FT LB	20 FT LB	6MM	5 FT LB	9 FT LB
3/8	30 FT LB	35 FT LB	8MM	18 FT LB	23 FT LB
7/16	45 FT LB	60 FT LB	10MM	32 FT LB	45 FT LB
1/2	65 FT LB	90 FT LB	12MM	55 FT LB	75 FT LB
9/16	95 FT LB	130 FTLB	14MM	85 FT LB	120 FT LB
5/8	135 FT LB	175 FT LB	16MM	130 FT LB	165 FT LB
3/4	185 FT LB	280 FT LB	18MM	170 FT LB	240 FT LB

- The above specifications are not to be used when the bolt is being installed with a bushing.

Seat Belts Save Lives, Please Wear Your Seat Belt.