



# 2007- 2018 Jeep Wrangler JK 2 Door / 4 Door 3.5"- 4" Suspension Lift Installation Instructions

### Required Tools List:

- Safety Glasses
- Metric / Standard Sockets & Wrenches
- Hex Key Wrenches
- Drill & Assorted Drill Bits
- Floor Jack
- Jack Stands
- Measuring Tape
- Torque Wrench



Before beginning the installation, read these instructions & the enclosed driver's WARNING NOTICE thoroughly & completely. Also affix the WARNING decal in the passenger compartment in clear view of all occupants. Please refer to the Parts List to insure that all parts & hardware are received prior to disassembly of the vehicle.

Make sure you park the vehicle on a level concrete or asphalt surface. Many times a vehicle is not level (side-to-side) from the factory, but usually not noticed until a lift kit has been installed which makes the difference more visible. Using a measuring tape, measure the front & rear (both sides) from the ground up to the center of the fender opening above the axle. Record this information below for future reference.

Driver Side Front: \_\_\_\_\_

Passenger Side Front: \_\_\_\_\_

Driver Side Rear: \_\_\_\_\_

Passenger Side Rear: \_\_\_\_\_

### Important Notes:

- The draglink must be adjusted to center the steering wheel before the vehicle is driven. Failure to do so will cause computer errors, odd handling characteristics, & poor performance.
- If larger tires (10% more than the OEM diameter) are installed, speedometer recalibration will be necessary. Contact your local Jeep dealer or an authorized dealer for details.
- After installation, a qualified alignment facility is required to align the vehicle to the OEM specifications.

## Component Box Breakdown:

**Part #: JK35BPBLT / JK35BPMLT / JK350BPBSR / JK350BPHSR / JK350BPMSR / JK350BPNSR / JK40BPBLT / JK40BPMLT / JK40BPBSR / JK40BPHSR / JK40BPNSR / JK400BPMSR**

| Item #        | Description  | Qty | Item #        | Description  | Qty |
|---------------|--|-----|---------------|--|-----|
| JL12FS-DR     | JK FRONT COIL SPRING<br>(Included With JK35LT Kit)         | 2   | B8567 (Rear)  | BLACK MAX SHCK W/BLK BOOT<br>(Included With 3.5"- 4" BPB Kits) | 2   |
| JK25FS-SR     | JK FRONT COIL SPRING<br>(Included With JK350 Kit)          | 2   | B8575 (Front) | BLACK MAX SHCK W/BLK BOOT<br>(Included With JK35/40LT Kits)    | 2   |
| JL34FS-DR     | JK FRONT COIL SPRING<br>(Included With JK40LT Kit)         | 2   | B8587 (Rear)  | BLACK MAX SHCK W/BLK BOOT<br>(Included With JK40LT Kits)       | 2   |
| JK40FS-SR     | JK FRONT COIL SPRING<br>(Included With JK40 Kit)           | 2   | H7037 (Rear)  | HYDRO SHOCK W/RED BOOT<br>(Included With 3.5" BPH Kits)        | 2   |
| JK25RS-DR     | JK REAR COIL SPRING<br>(Included With JK35LT Kit)          | 2   | H7065 (Front) | HYDRO SHOCK W/RED BOOT<br>(Included With BPH Kits)             | 2   |
| JK25RS-SR     | JK REAR COIL SPRING<br>(Included With JK350 Kit)           | 2   | H7067 (Rear)  | HYDRO SHOCK W/RED BOOT<br>(Included With 4" BPH Kits)          | 2   |
| JK40RS-DR     | JK REAR COIL SPRING<br>(Included With JK40LT Kit)          | 2   | M9537 (Rear)  | MONOTUBE SHOCK<br>(Included With 3.5" BPM Kits)                | 2   |
| JK40RS-SR     | JK REAR COIL SPRING<br>(Included With JK40 Kit)            | 2   | M9565 (Front) | MONOTUBE SHOCK<br>(Included With BPM Kits)                     | 2   |
| CAM700        | JK CAM BOLTS   | 2   | M9567 (Rear)  | MONOTUBE SHOCK<br>(Included With 3.5"- 4" BPM Kits)            | 2   |
| JK40RBS-S     | JK REAR BUMP STOP BRACKET                                  | 2   | M9575 (Front) | MONOTUBE SHOCK<br>(Included With JK35/40LT Kits)               | 2   |
| ABSS2535      | JK FRONT BUMP STOP SPACER                                  | 2   | M9587 (Rear)  | MONOTUBE SHOCK<br>(Included With JK40LT Kits)                  | 2   |
| JKBRC15       | JK REAR TRACK BAR BRACE                                    | 1   | N8037 (Rear)  | NITRO SHOCK W/RED BOOT<br>(Included With 3.5" BPN Kits)        | 2   |
| JKFTBA717     | JK ADJUST FRONT TRACK BAR                                  | 1   | N8065 (Front) | NITRO SHOCK W/RED BOOT<br>(Included With BPN Kits)             | 2   |
| JK24RTB-B     | JK REAR TRACK BAR BRACKET                                  | 1   | N8067 (Rear)  | NITRO SHOCK W/RED BOOT<br>(Included With 4" BPN Kits)          | 2   |
| SBE502        | JK REAR SWAY BAR END LINKS                                 | 1   |               |  |     |
| HB-JK40BP     | HDWR BAG: JK3540BP   | 1   |               |  |     |
| HB-JK4BL      | HDWR BAG: BRAKE LINE BRKT                                  | 1   |               |  |     |
| I-JK3540BP    | INST SHT: 3.5-4" JK W/O LINKS                              | 1   |               |  |     |
| B8537 (Rear)  | BLACK MAX SHCK W/BLK BOOT<br>(Included With 3.5" BPB Kits) | 2   |               |  |     |
| B8565 (Front) | BLACK MAX SHCK W/BLK BOOT<br>(Included With BPB Kits)      | 2   |               |  |     |

### Part # JKBRC15

| Item #    | Description           | Qty | Item #     | Description       | Qty |
|-----------|-----------------------|-----|------------|-------------------|-----|
| JKBRC15-B | JK REAR TRK BAR BRACE | 1   | HB-JKBRC15 | HDWR BAG: JKBRC15 | 1   |

### Part # JKFTBA717

| Item #     | Description                | Qty | Item #  | Description             | Qty |
|------------|----------------------------|-----|---------|-------------------------|-----|
| JKFTBA10-B | JK FRONT ADJUST TRACK BAR  | 1   | 34RFTJN | 3/4" RIGHT HAND JAM NUT | 1   |
| RR34X14RB  | 3/4"RH ROD END W/14MM BUSH | 1   |         |                         |     |

I-JK3540BP

## Part # SBE502

| Item #   | Description            | Qty |
|----------|------------------------|-----|
| SBE502-L | REAR SWAY BAR END LINK | 2   |

| Item #    | Description      | Qty |
|-----------|------------------|-----|
| HB-SBE502 | HDWR BAG: SBE502 | 1   |

## Hardware Bag Breakdown:

### Part # HB-SBE502

| Item #      | Description                  | Qty |
|-------------|------------------------------|-----|
| 403712      | ES22 SLEEVE / 1.25" LONG     | 4   |
| 12X212BHCTB | 1/2 X 2 1/2 BUTTON HEAD BOLT | 4   |
| 12SAEW      | 1/2 SAE WASHER               | 4   |

| Item # | Description                | Qty |
|--------|----------------------------|-----|
| 12USSW | 1/2 USS WASHER             | 4   |
| 12CTN  | 1/2 COARSE THREAD LOCK NUT | 4   |

### Part # HB-JK40BP

| Item #    | Description                  | Qty |
|-----------|------------------------------|-----|
| 12X114FTB | 1/2 X 1 1/4 FINE THREAD BOLT | 1   |
| 12SAEW    | 1/2 SAE WASHER               | 1   |
| 12FTN     | 1/2 FINE THREAD LOCK NUT     | 1   |
| 38X4BHB   | 3/8 X 4 BUTTON HEAD BOLT     | 2   |
| 38SAEW    | 3/8 SAE WASHER               | 2   |
| 38CTN     | 3/8 COARSE THREAD LOCK NUT   | 2   |
| 516X1FTB  | 5/16 X 1 FINE THREAD BOLT    | 4   |
| 516SAEW   | 5/16 SAE WASHER              | 8   |
| 516FTN    | 5/16 FINE THREAD LOCK NUT    | 4   |

| Item #     | Description                   | Qty |
|------------|-------------------------------|-----|
| 716X1FTB   | 7/16 X 1 FINE THREAD BOLT     | 1   |
| 716SAEW    | 7/16 SAE WASHER               | 1   |
| 716FTN     | 7/16 FINE THREAD LOCK NUT     | 1   |
| 916X3FTB   | 9/16 X 3 FINE THREAD BOLT     | 1   |
| 916X312FTB | 9/16 X 3 1/2 FINE THREAD BOLT | 1   |
| 916SAEW    | 9/16 SAE WASHER               | 4   |
| 916FTN     | 9/16 FINE THREAD LOCK NUT     | 2   |
| CS1625     | CRUSH SLEEVE / JKRTB          | 1   |

### Part # HB-JK4BL

| Item #  | Description              | Qty |
|---------|--------------------------|-----|
| JKBE4D  | BRAKE LINE BRACKET       | 2   |
| 14X1FTB | 1/4 X 1 FINE THREAD BOLT | 2   |

| Item # | Description              | Qty |
|--------|--------------------------|-----|
| 14SAEW | 1/4 SAE WASHER           | 4   |
| 14FTN  | 1/4 FINE THREAD LOCK NUT | 2   |

### Part # HB-JKBRC15

| Item #   | Description                 | Qty |
|----------|-----------------------------|-----|
| 516X1CTB | 5/16 X 1 COARSE THREAD BOLT | 3   |
| 516XTFW  | 5/16 EXTRA THICK FLAT WASH  | 3   |

| Item # | Description      | Qty |
|--------|------------------|-----|
| 516LW  | 5/16 LOCK WASHER | 3   |

## **Front Installation:**

1. With the vehicle on flat level ground, set the emergency brake, & block the rear tires / wheels.
2. Raise the front of the vehicle & support the frame rails using jack stands.
3. Remove the front tires / wheels.
4. Remove the OEM front sway bar end links using a 18mm socket / wrench & 19mm socket / wrench. **Note:** Save the OEM hardware. It will be reused later for Step # 25 of this installation.
5. Remove the OEM front track bar using a 21mm socket / wrench. (See Photo # 1)
6. If installing a Skyjacker Steering Stabilizer (Part # 7003), Remove the OEM steering stabilizer using a 18mm socket / wrench. (See Photo # 2)
7. Remove the OEM front shocks using a 18mm socket / wrench.
8. Mark the location of the OEM front driveshaft & yoke, then remove the front driveshaft using a 15mm socket / wrench.
9. Lower the front differential & remove the OEM front coil springs. (See Photo # 3)
10. Place the new Skyjacker front bump stop spacers on the center of each OEM bump stop pad located on the front axle. Mark & drill using a 25/64" drill bit. (See Photo # 4)
11. Install the new Skyjacker front coil springs & new Skyjacker front bump stop spacers using the supplied 3/8" x 4" button head bolts, washers, nuts, a 7/32" hex key & a 9/16" socket / wrench. (See Photo # 5)
12. Raise the front differential in order to load the new Skyjacker front coil springs & install the OEM front driveshaft using the OEM hardware & a 15mm socket / wrench.



**Photo # 1**



**Photo # 2**



**Photo # 3**



**Photo # 4**



**Photo # 5**

13. If installing a Skyjacker steering stabilizer (Part # 7003), install it at this time. (See Photo # 6)

14. Install the new Skyjacker front shocks using the supplied hardware, OEM hardware, & a 18mm socket / wrench. (See Photo # 7)



15. Install the front tires / wheels & lower the vehicle to the ground.

16. Install the fixed end of the new Skyjacker adjustable front track bar to the upper track bar mounting location using the OEM hardware & a 21mm socket / wrench. **Do not tighten at this time.** (See Photo # 8)

17. Using a measuring tape, check the vehicle to make sure the body is centered over the front tires / wheels & adjust the new Skyjacker rod end to align with the lower track bar mounting location.



18. Install the adjustable end of the new Skyjacker adjustable front track bar to the lower track bar mounting location using the OEM hardware & a 21mm socket / wrench. **Do not tighten at this time.** (See Photo # 9)



19. Tighten the OEM upper & lower track bar mounting hardware using a 21mm socket / wrench.

20. Tighten the jam nut of the new Skyjacker rod end using an adjustable wrench.

### **Rear Installation:**

21. Block the front tires / wheels, raise the rear of the vehicle, & properly support the frame rails using jack stands.

22. Remove the rear tires / wheels.

23. Remove the OEM rear shocks using a 16mm socket / wrench & 18mm socket / wrench. (See Photo # 10)





24. Disconnect the OEM rear track bar from the rear axle using a 21mm socket / wrench. (See Photo # 11)

25. Remove the OEM rear sway bar end links using a 18mm socket / wrench & 19mm socket / wrench. Relocate the OEM rear sway bar end links to the front of the vehicle using the OEM hardware saved from Step # 4 & a 18mm socket / wrench & 19mm socket / wrench. **Note:** Double disconnect front sway bar end links are available separately (Part # SBE126).

26. Disconnect the OEM ABS line & brake line from the frame using a 10mm socket / wrench. (See Photo # 12)

27. Lower the rear differential & remove the OEM rear coil springs.

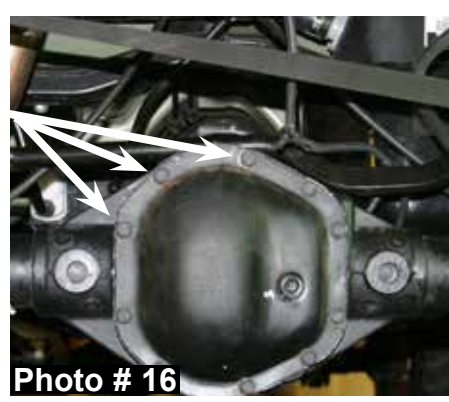
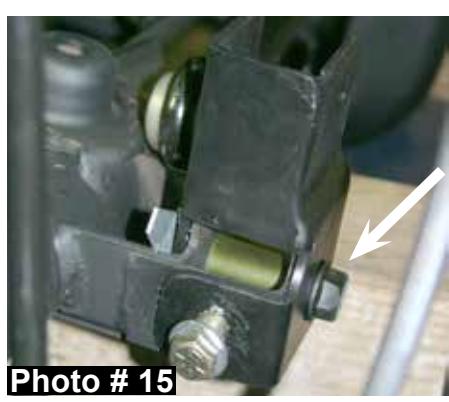
28. Install the new Skyjacker rear coil springs.

29. Place the new Skyjacker rear track bar relocation bracket over the OEM bracket on the rear axle. With the new rear track bar bracket seated flush, clamp the bracket in place, mark with a center punch, & drill the new center mounting hole using a 15/32" drill bit. (See Photo # 13)

30. Once drilled, install the supplied 7/16" x 1" fine thread bolt, washer, & nut using a 5/8" socket / wrench. (See Photo # 14)

31. Mark, center punch, & drill through the driver side bottom of the OEM bracket & through the new Skyjacker bracket using a 17/32" drill bit. Install the supplied 1/2" x 1 1/4" fine thread bolt, washer, & nut using a 3/4" socket / wrench. Install the supplied crush sleeve, 9/16" x 3 1/2" bolt, washers, & nut at the bottom location using a 13/16" socket / wrench. (See Arrow in Photo # 15)

32. Remove the three OEM upper left rear differential cover bolts using a 1/2" socket / wrench. (See Photo # 16)



33. Attach the new Skyjacker track bar brace to the rear differential using the supplied 5/16" x 1" coarse thread bolts, 5/16" extra thick flat washers, 5/16" lock washers, & a 1/2" socket / wrench. **Do not tighten at this time.** The end of the new track bar brace should be between the new track bar bracket & the new coil spring. **Note:** Use the 5/16" extra thick flat washers between the new track bar brace & the rear differential cover. Use the 5/16" lock washers under the head of each 5/16" bolt. (See Photo # 17 & # 18) **Do not tighten at this time.**



34. Attach the OEM rear track bar & the end of the new Skyjacker track bar brace to the upper mounting location of the new Skyjacker track bar bracket using the supplied 9/16" x 3" fine thread bolt, washers, & nut. Tighten the supplied 5/16" bolts at the rear differential using a 1/2" socket / wrench & the supplied 9/16" x 3" bolt on the track bar using a 13/16" socket / wrench. (See Photo # 19)



35. Attach the new Skyjacker rear bump stop spacers to the OEM locations on the rear axle using the supplied 5/16" x 1" fine thread bolts, washers, nuts, & a 1/2" socket / wrench. (See Photo # 20) **Note:** Be sure to install the new bump stop spacers so the angled end is towards the rear of the vehicle.



36. Raise the rear differential in order to load the new Skyjacker rear coil springs & install the new Skyjacker rear sway bar end links using the supplied steel sleeves, 1/2" x 2 1/2" button head bolts, washers, nuts, a 5/16" hex key, & a 3/4" socket / wrench. **Note:** If using an OEM wheel, the upper end link bolt will need to be installed from the outside in for wheel clearance. Use the large 1/2" USS washer under the head of each bolt & the 1/2" SAE washer under each nut. (See Photo # 20)



37. Install the new Skyjacker brake line brackets to the frame using the OEM hardware & a 10mm socket / wrench. Attach each OEM brake line to the new brake line brackets using the supplied 1/4" x 1" fine thread bolts, washers, nuts, & a 7/16" socket / wrench. (See Photo # 21)



38. Install the new Skyjacker rear shocks using the OEM hardware, & a 16mm socket / wrench & 18mm socket / wrench. (See Photo # 22)

39. Install the rear tires / wheels & lower the vehicle to the ground.

### **Front Lower & Rear Upper Cam Bolt Installation:**

40. One at a time, remove each OEM front lower & rear upper control arm from the front & rear axles using a 21mm socket / wrench.

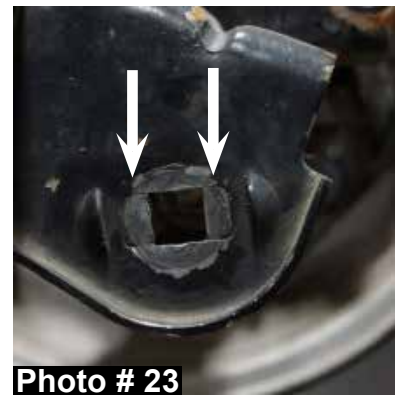
41. The OEM mounting brackets are scribed so they can be made a slotted hole. Knock out these notches on the front & rear half of the holes on each side of the OEM mounting brackets. (See Arrows in Photo # 23)

42. One at a time, install each OEM front lower & rear upper control arm to the front & rear axle using the new Skyjacker eccentric cam bolts, eccentric washers, nuts, a 21mm socket / wrench, & a 22mm socket / wrench. (See Photo # 24)

43. With the vehicle on the ground & the weight of the vehicle on the tires / wheels, tighten the new Skyjacker eccentric cam bolts using a 21mm socket / wrench & a 22mm socket / wrench. **Note:** These new eccentric cam bolts can be rotated forward or backward for caster adjustment & to adjust the axle pinion angle to eliminate driveline vibrations.

### **Final Notes:**

- After the installation is complete, double check that all nuts & bolts are tight. Refer to the following chart for the proper torque specifications. (Do not retighten the nuts & bolts where thread lock compound was used.)
- With the vehicle placed on the ground, cycle the steering lock to lock & inspect the steering, suspension, brake lines, front & rear drivelines, fuel lines, & wiring harnesses for proper operation, tightness, & adequate clearance.
- Have the headlights readjusted to the proper settings.
- Have a qualified alignment center align the vehicle to the OEM specifications.
- After the first 100 miles, check all hardware for the proper torque & periodically thereafter.





## TORQUE SPECIFICATIONS

| <u>INCH SYSTEM</u> |                |                | <u>METRIC SYSTEM</u> |                  |                   |
|--------------------|----------------|----------------|----------------------|------------------|-------------------|
| <b>Bolt Size</b>   | <b>Grade 5</b> | <b>Grade 8</b> | <b>Bolt Size</b>     | <b>Class 8.8</b> | <b>Class 10.9</b> |
| 5/16               | 15 FT LB       | 20 FT LB       | 6MM                  | 5 FT LB          | 9 FT LB           |
| 3/8                | 30 FT LB       | 35 FT LB       | 8MM                  | 18 FT LB         | 23 FT LB          |
| 7/16               | 45 FT LB       | 60 FT LB       | 10MM                 | 32 FT LB         | 45 FT LB          |
| 1/2                | 65 FT LB       | 90 FT LB       | 12MM                 | 55 FT LB         | 75 FT LB          |
| 9/16               | 95 FT LB       | 130 FT LB      | 14MM                 | 85 FT LB         | 120 FT LB         |
| 5/8                | 135 FT LB      | 175 FT LB      | 16MM                 | 130 FT LB        | 165 FT LB         |
| 3/4                | 185 FT LB      | 280 FT LB      | 18MM                 | 170 FT LB        | 240 FT LB         |

- The above specifications are not to be used when the bolt is being installed with a bushing.

**Seat Belts Save Lives, Please Wear Your Seat Belt.**