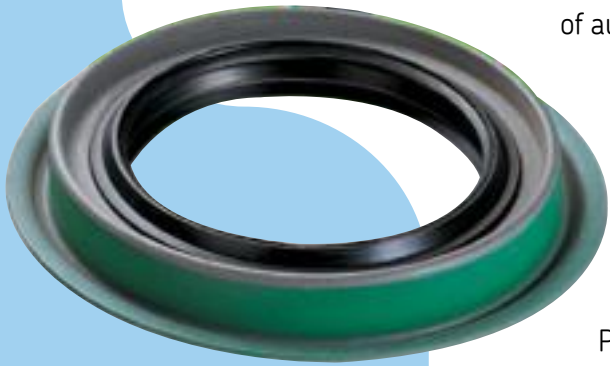


# Oil and grease seals

SKF precision engineered seals for engine and drivetrain applications

SKF has a long history in sealing knowledge. From our patent on the first automotive wheel seal in 1928, we have evolved to a leading supplier of automotive and truck sealing technology.



The demand for increased speeds, higher operating temperatures and synthetic lubricants with aggressive additives increase the stress on oil and grease seals. SKF seals deliver unparalleled performance over a wide range of operating conditions for most automotive and truck applications.

Our sealing products include conventional rubber shaft seals, PTFE seals and low friction seals. All are made from the OE specified or better materials for each application.

## Precision engineered

### Seal lip profile

All SKF seals incorporate a seal lip design that meets or exceeds the OE specifications. This provides the toughest exclusion of dirt and contaminants, reliable dynamic sealing and a long service life.

### Sealing element

SKF's synthetic rubber blends are formulated from families of complex polymers to provide protection to operate in temperatures as low as minus 40 degrees to as high as 400 degrees Fahrenheit.

Today's lubricants with their aggressive additive packages can attack the rubber compound of the seal. SKF seals are engineered to be compatible with these lubricants.

### Case

The case components are made from the highest grade of carbon steel, and are coated with phosphate to ensure protection against rust. Most metal-cased seals are coated with Bore-Tite, a flexible coating on the outside diameter of the seal that fills in small housing bore imperfections, and provides a tight and leak proof seal.



Discover other replacement driveline and axles on our website.