



70TH
SEVENTIETH
ANNIVERSARY

SEM[®] PRODUCT CATALOG

 **BUILT BETTER[™]**
IN THE USA

BUILT BETTER™ IN THE USA



LABELED BY
EMPLOYEE OWNER
MARIA DIAZ

Maria Diaz

WE ARE AMERICAN MANUFACTURING

The employee owners of SEM engineer best in class products to reduce repair times, steps, and waste in the collision center. From intelligent product design to technical support, the “built better” promise is engrained in our DNA.



TABLE OF CONTENTS

CATEGORY

PREP & CLEAN

Interior & Exterior Prep.....	2 – 3
Spray Gun Cleaners.....	3

REPAIR

Adhesives.....	5 – 6
Plastic Repair.....	7
2K Seam Sealers.....	8 – 10
1K Seam Sealers.....	10
Sound Dampening.....	10 – 11
Fillers & Glazes.....	11
Repair Equipment.....	12 – 13, 15
Commercial Fleet.....	14 – 15

REFINISH

Clears.....	16 – 17
Primers.....	18 – 20
Bumper Coaters.....	20
OEM Refinishing.....	22
Trim Paints.....	23
Flexible Coatings.....	24 – 26
Aerospace.....	27
Marine.....	28
Custom Finish.....	29 – 30
Aerosol Filling.....	31 – 32
Adhesion Promoters.....	32 – 33
General Purpose Aerosols.....	33
Paint Strippers.....	33
UV Cured Clear.....	33
Power Station™.....	34

PROTECTIVE COATINGS

Undercoatings.....	36
Chip Guards.....	37
Coating Equipment.....	37
Truckbed Liners.....	38 – 39

RUST & CORROSION

Rust Prevention.....	40
Rust Converters & Sealers.....	40
Rust Coatings.....	41
Rust Equipment.....	42

ASSORTMENTS

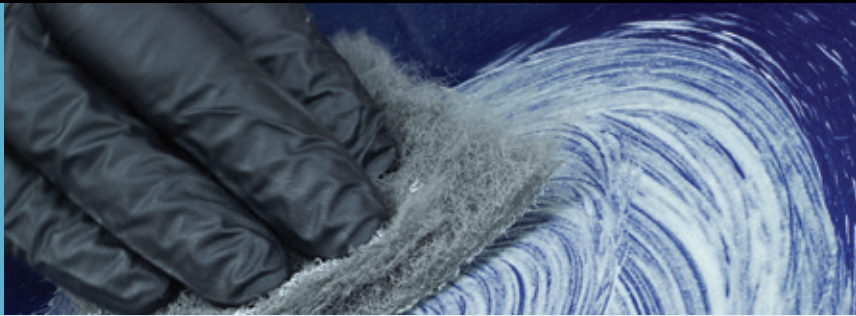
Cabinets, Racks & Counter Displays.....	43 – 44
---	---------

BRAND

BUMPER COATER™	20
BUMPER BITE™	11
CARBO FILL+™	11
CLASSIC COAT™	24, 44
COLOR COAT™	
Aerosols, Bulk & Mixing Systems.....	26
Aerosol Blank.....	31 – 32
COPPERWELD™	19, 40
CUSTOM FILL™	31 – 32, 34
DUAL-MIX™	5 – 11, 43
EZ COAT™	22, 34
FACTORY PACK™	22, 34
FLEETLINE™	14, 15
GRIPTIDE™	28
HOT ROD	29
MINI-MAX™	6 – 7
METAL BITE™	11
MULTI-COAT™	32
MULTIMAX™	33
POWER STATION™	34
PRO-TEX™	39
ROCK-IT LINER™	38
RUST MORT™	40
RUST PREVENTER CAVITY WAX	40
RUST SEAL™	40
RUST SHIELD™	41
RUST TRAP™	41
SOLARAY™	33
SURE-COAT™	25, 27
TRIM BLACK	23
VINYL COAT™	28, 44
WORLD CLASS™	16 – 18
XXX	
Adhesive Removers.....	3
Gun Cleaners.....	3
Adhesion Promoter.....	32
Paint Stripper.....	33

INTERIOR & EXTERIOR PREP

Proper preparation is the foundation to a quality repair. SEM prep products are specifically designed for each substrate to eliminate contaminants and maximize adhesion of top coats and repair materials.



Scuff & Clean

An abrasive paste that cleans and prepares panels for repair or refinish. Now available in an improved formula and a convenient gallon pump. Improved formula provides better sudsing, easier rinsing and no settling.

- Perfect for bumper covers
- Removes waterborne contaminants and road grime
- Uniform scratch improves top coat adhesion
- Easier rinsing
- No shaking or stirring necessary
- Less mess, less waste



38391 | Gallon Pump
38398 | 16 oz. Tube

Suitable substrates:

- Primed or painted surfaces
- Plastic

SEM Soap

A mild abrasive cleaner used as the first step in refinishing flexible substrates.

- Gravitates into surface and floats contaminants for easy removal
- Mild abrasive helps with adhesion
- Foaming action removes body oils and other water soluble contaminants



39362 | 16 oz. Tube

Suitable substrates:

- Vinyl
- Leather
- Plastic

Vinyl Prep

A strong solvent blend critical to refinishing vinyl.

- Removes soil, wax and grease
- Temporarily softens substrate
- Works quickly



38343 | 16 oz. Aerosol
38344 | Quart

Suitable substrates:

- Vinyl

Plastic & Leather Prep

A mild solvent blend to clean plastic and leather prior to refinishing.

- Removes mold release, fingerprints, grease and oil
- Will not soften or distort plastic parts
- Easy to use



38351 | Gallon
38353 | 16 oz. Aerosol
38354 | Cone Quart

Suitable substrates:

- Plastic
- Leather
- Carpet
- Velour

SEM Solve

A virgin solvent blend to clean panels prior to refinish or repair.

- Effectively removes adhesive residue, wax, grease, road tar, oil, silicone, paint overspray and bug remnants
- Easy to use
- Leaves no residue



38371 | Gallon
38373 | 20 oz. Aerosol
38374 | Quart
38375 | 5 Gallon

Suitable substrates:

- Bare metal
- Primed or painted surfaces
- SMC and plastic – limit exposure

XXX Universal Adhesive Remover

A mild solvent blend used to remove adhesive residue left by tapes, decals, and body molding as well as dirt, road tar, sap, wax, silicone, grease, oil, and bugs from interior or exterior surfaces.

- Quick acting formula dissolves adhesive residue, tar, and more
- Will not damage thoroughly cured paint when used as directed
- Will not soften, discolor, or distort plastic, vinyl, or fabric when used as directed



77783 | 16 oz. Aerosol
77784 | Quart

Suitable substrates:

- Plastic
- Leather
- Vinyl
- Glass
- OEM and refinished panels
- Bare aluminum and steel

XXX Universal Surface Cleaner

VOC Compliant Everywhere

A super compliant, waterborne cleaner that removes solvent and water soluble contaminants prior to refinishing.

- 2-in-1 cleaner reduces products needed in collision center
- Helps eliminate static for improved metallic orientation and reduced dust contamination
- Solvent strong in waterborne formula
- Exceptional grease-cutting power



77771 | Gallon
77774 | Quart

Suitable substrates:

- Primed or painted surfaces
- Leather
- Vinyl
- Plastic
- Aluminum
- Bare steel

SPRAY GUN CLEANERS

Keeping spray equipment clean will lengthen its service life, saving money in the long run and eliminating costly rework. SEM cleaners are specially formulated to quickly and easily keep equipment looking and operating as new.



Sprayable Seam Sealer Gun Cleaner

A blend of solvents to help clean one-component sprayable seam sealer applicators.

- Makes a difficult job easier
- Perfect when changing sealer colors
- High strength virgin solvent blend
- Does not contain chlorinated solvents
- Attached straw for tight areas



29433 | 20 oz. Aerosol

Find out more about our **1K Sprayable Seam Sealers** on page 10 and our **1K Sprayable Seam Sealer Applicator** on page 13.

XXX Universal Gun Cleaner

Your waterborne and solvent-based, 2-in-1 cleaning solution.

Quickly removes solvent-based and waterborne coatings from spray equipment.

- 2-in-1 heavy duty cleaner reduces products needed in collision center
- Removes waterborne or solvent-based paint and overspray
- Superior 100% virgin solvent
- Reduces mistakes from choosing wrong cleaners



77763 | 20 oz. Aerosol

Suitable substrates:

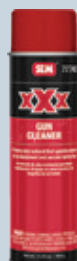
- Spray equipment
- Aerosol spray tips
- Glass
- Bare metal

XXX Gun Cleaner

A heavy-duty aerosol solvent that quickly cleans spray equipment and aerosol spray tips.

77743 | 20 oz. Aerosol

For a 2-in-1 cleaning solution, use 77763



XXX Waterborne Gun Cleaner

Easily removes wet waterborne coatings from spray equipment.

77753 | 16 oz. Aerosol

For a 2-in-1 cleaning solution, use 77763



DUAL-MIX™

ADHESIVES • PLASTIC REPAIR • SEAM SEALERS • SOUND DAMPENING

The only cartridge system that's entirely
OEM recommended and forever warranted



TRUSTED FOR OVER 25 YEARS

ADHESIVES

Urethanes, acrylics, and epoxies for large and small applications.

- Roof Skins
- Door Skins
- Applique Panels
- Quarter Panels

PLASTIC REPAIR

For repairing flexible, semi-rigid and rigid plastics with ease.

- Bumper Covers
- Interior Plastics
- Molded Body Panels

SEALERS

Direct to metal and paintable immediately sealers that restore OEM appearance while preventing corrosion.

- Roof Skins
- Door Skins
- Strut Towers
- Floor Pans
- Fender Wells
- Body Pans and Trunk Areas

SOUND DAMPENING

Reduces noise and vibrations and matches OEM textures.

- Roof Bows
- Hoods
- Door Intrusion Beams
- Rocker Panels and Floor Pans
- Quarter Panels
- Body Pans and Trunk Areas
- Deck Lids and Filler Necks



DUAL-MIX FOREVER WARRANTY

When used according to directions, SEM guarantees to the purchaser that all Dual-Mix products will perform to specifications forever. This warranty covers reasonable costs for labor, loss of use of the vehicle, parts and materials only, and excludes consequential or incidental damages.

ADHESIVES

SEM adhesives are formulated with the technician in mind. With epoxy, acrylic and urethane technologies, no matter the substrate or job size, SEM can cover all your adhesive application needs.



Dual-Mix™ Structural Impact Resistant Adhesive (SIRA)

Dual-Mix Forever Warranty

A two-component, epoxy-based adhesive for bonding structural and non-structural components where specified by the vehicle manufacturer.

- Superior impact and peel strength
- Excellent corrosion resistance
- 60 minute working time
- Minimized down times with multiple heat cure options
- Spacer beads for consistent bond line thickness
- Rivet and weld bonding compatible



39757 | 7 oz. 2K Cartridge

Working Time: 1 Hr
Clamp Time: 8 Hr
Cure Time: 48 Hr
Heat Clamp Time: 15 Min
Heat Cure Time: 30 Min
Resin Base: Epoxy

Dual-Mix Multi-Purpose Panel Adhesive

Dual-Mix Forever Warranty

A two-component epoxy for panel bonding of steel, aluminum, SMC and fiberglass.

- Long working time, 100% reactive
- Superior impact and peel strength
- Excellent corrosion resistance
- Spacer beads for consistent bond line thickness
- Non-sag formula
- Simple surface preparation



39747 | 7 oz. 2K Cartridge

Working Time: 90 Min
Clamp Time: 4 Hr
Cure Time: 24 Hr
Heat Cure Time: 1 Hr
Resin Base: Epoxy

Dual-Mix Door Skin & SMC Adhesive

Dual-Mix Forever Warranty

A two-component epoxy that quickly bonds any combination of steel, aluminum, fiberglass and SMC.

- Non-sag formulation
- Excellent corrosion protection
- Bonds multiple substrates
- Extended two year shelf life



39337 | 7 oz. 2K Cartridge

Working Time: 30 Min
Clamp Time: 2 Hr
Cure Time: 24 Hr
Heat Cure Time: 1 Hr
Resin Base: Epoxy

Dual-Mix Weld-Bond Adhesive

Dual-Mix Forever Warranty

A non-sag, two-component acrylic adhesive system formulated to bond metal surfaces without the use of an external primer.

- Superior impact and peel strength
- Spacer beads for consistent bond line thickness
- Non-sagging gaps filled up to 1/2"
- Excellent environmental resistance
- Extended one hour working time



39537 | 7 oz. 2K Cartridge

Working Time: 1 Hr
Clamp Time: 3 Hr
Cure Time: 24 Hr
Heat Cure Time: 1 Hr
Resin Base: Acrylic

Dual-Mix Patch Panel Adhesive

Dual-Mix Forever Warranty

A two-component adhesive for quickly bonding metal panels without the use of an external primer.

- Superior impact and peel strength
- Non-sag formula
- Quick cure time
- Excellent corrosion resistance



39897 | 7 oz. 2K Cartridge

Working Time: 10 Min
Clamp Time: 20 Min
Cure Time: 30 Min
Heat Cure Time: 15 Min
Resin Base: Acrylic

Dual-Mix™ Quick Set 20

Dual-Mix Forever Warranty

A fast, two-component, clear, urethane adhesive designed for bumper tab repair and bonding most small plastic, steel and aluminum parts.

- High strength and sandable
- Bonds almost anything
- Non-sag formula fills gaps
- Colorless
- Super fast setting



40207 | 7 oz. 2K Cartridge
40202 | 1.7 oz. 2K Cartridge

Working Time: 15 Sec
Set Time: 20 Sec
Cure Time: 15 Min
Resin Base: Urethane

Dual-Mix Quick Set 50

Dual-Mix Forever Warranty

A very fast two-component black urethane adhesive designed for automotive plastic repair and bonding most small plastic, steel and aluminum parts.

- High strength and sandable
- Bonds almost anything
- Non-sag formula fills gaps
- 1 hour cure



40507 | 7 oz. 2K Cartridge
40502 | 1.7 oz. 2K Cartridge

Working Time: 45 Sec
Set Time: 50 Sec
Cure Time: 15 Min
Resin Base: Urethane

Dual-Mix Quick Set 180

Dual-Mix Forever Warranty

A general purpose, black adhesive designed for repairing and bonding most plastic, steel, aluminum, glass, SMC and fiberglass parts.

- High strength and sandable
- Bonds multiple substrates
- Non-sag formula fills gaps
- Extended 3 minute working time



41807 | 7 oz. 2K Cartridge

Working Time: 3 Min
Set Time: 30 Min
Cure Time: 24 Hr
Resin Base: Urethane

Mini-Max™ Clear Fast Set Adhesive

A two-component clear epoxy for an invisible bond on plastic, metal, fiberglass and wood.

- Superior adhesion
- High strength
- Fast cure
- Bonds multiple substrates



68442 | 1 oz. 2K Cartridge

Working Time: 2 Min
Set Time: 5 Min
Cure Time: 1 Hr
Resin Base: Epoxy

Mini-Max General Purpose Adhesive

A two-component epoxy-based adhesive for fast bonds on most surfaces.

- Superior adhesion
- Ideal working time
- Bonds multiple substrates
- Isocyanate free



68432 | 1 oz. 2K Cartridge

Working Time: 3 Min
Set Time: 7 Min
Cure Time: 1 Hr
Heat Cure Time: 15 Min
Resin Base: Epoxy

Insta-Bond

A general purpose, acrylic adhesive for bonding trim pieces, emblems, moldings and other small parts.

Insta-Bond Accelerator is a chemical catalyst for acrylic adhesives.

- Holds torn plastic together during repair
- Provides high strength bonds
- Also for use on vinyl, metal and glass
- Accelerator creates an instant bond



39310 | 3 oz. Kit
39311 | 1 oz. Adhesive
39312 | 2 oz. Accelerator

Suitable substrates:

- Plastic
- Glass
- Rubber
- Vinyl
- SMC
- Metal
- Fiberglass

PLASTIC REPAIR

Increase shop revenue through plastic repair. From bumpers and ground effects to trim components and mirrors, repairing plastic parts is often less expensive than replacement. SEM plastic repair products allow you to fill, repair and contour plastic parts with ease.



Dual-Mix™ Multi-Plastic Repair Material

Dual-Mix Forever Warranty

A two-component epoxy for fast repairs on virtually all plastic bumper covers.

- No adhesion promoter required
- Exceptional sanding and feather edge
- Remains flexible
- Does not shrink or pinhole
- Excellent leveling and sag resistance



39847 | 7 oz. 2K Cartridge

Working Time: 7 Min
Sand Time: 15 Min
Top Coat Time: 20 Min
Cure Time: 1 Hr

Dual-Mix Problem Plastic Repair Material

Dual-Mix Forever Warranty

A two-component, epoxy-based filler for repairing olefin-based plastics and similar rigid and semi-rigid substrates.

- No adhesion promoter required
- Superior adhesion
- Excellent sanding and feather edging
- Does not shrink or pinhole
- Zero VOC



39767 | 7 oz. 2K Cartridge

Working Time: 5 Min
Sand Time: 15 Min
Top Coat Time: 20 Min
Cure Time: 1 Hr

Mini-Max™ Bumper Repair

A two-component, epoxy-based filler for repairing small damage to bumpers and rigid or semi-rigid plastics.

- No adhesion promoter required
- Superior adhesion
- Excellent sanding and feather edging
- Does not shrink or pinhole
- Zero VOC



68422 | 1 oz. 2K Cartridge

Working Time: 5 Min
Sand Time: 15 Min
Top Coat Time: 20 Min
Cure Time: 1 Hr

Plastic Repair Reinforcing Tape

A non-backed mesh tape to strengthen repairs on plastic and fiberglass.

- Light adhesive for easy application
- Ideal width for tears
- Use with all fillers



70006 | 36' Roll

Plastic Repair Contouring Tape

A film-backed reinforcing tape used to strengthen repairs on plastic and fiberglass and for creating or repairing bumper tabs.

- Backing material perfect for tab repair
- Ideal width for holes and larger repairs
- Use with all fillers



70007 | 15' Roll

SEAM SEALERS



Available in all 4 OEM colors.



Direct to metal and paintable immediately.*
SEM Seam Sealers reduce time, reduce steps and reduce waste.

* Paintable immediately with most solvent based paint systems.

SEAM SEALERS

Proper sealing is the only way to ensure the correct appearance and complete corrosion protection of your repairs. SEM has a comprehensive line of two-component and one-component seam sealers to meet your repair requirements.



Dual-Mix™ Seam Sealer

Dual-Mix Forever Warranty

A two-component, gray, epoxy sealer for sealing interior or exterior seams, joints and voids.

- **Direct to metal**
- **Paintable immediately***
- Will not shrink, harden or crack
- Non-sag formula duplicates OEM sealers
- Fast cure increases production
- Sprayable for additional versatility



39377 | 7 oz. 2K Cartridge

Working Time: 10 Min
Set Time: 15 Min
Top Coat Time: 0 Min
Cure Time: 1 Hr

* Paintable immediately with most solvent based paint systems.

Dual-Mix Beige Seam Sealer

Dual-Mix Forever Warranty

A two-component epoxy for sealing interior or exterior seams, joints and voids.

- **Direct to metal**
- **Paintable immediately***
- Will not shrink, harden or crack
- Non-sag formula duplicates OEM sealers
- Fast cure increases production
- Sprayable for additional versatility



39477 | 7 oz. 2K Cartridge

Working Time: 10 Min
Set Time: 15 Min
Top Coat Time: 0 Min
Cure Time: 1 Hr

* Paintable immediately with most solvent based paint systems.

Dual-Mix Heavy Bodied Black Seam Sealer

Dual-Mix Forever Warranty

A high viscosity, two-component epoxy for use on interior or exterior seams, joints and voids.

- **Direct to metal**
- **Paintable immediately***
- Holds tooling marks throughout working time
- Non-sag formula
- Excellent adhesion to multiple surfaces
- Remains flexible without shrinking or cracking



40377 | 7 oz. 2K Cartridge

Working Time: 10 Min
Set Time: 15 Min
Top Coat Time: 0 Min
Cure Time: 1 Hr

* Paintable immediately with most solvent based paint systems.

Dual-Mix Heavy Bodied White Seam Sealer

Dual-Mix Forever Warranty

A high viscosity two-component epoxy for use on interior or exterior seams, joints and voids.

- **Direct to metal**
- **Paintable immediately***
- Holds tooling marks throughout working time
- Non-sag formula
- Excellent adhesion to multiple surfaces
- Remains flexible without shrinking or cracking



40477 | 7 oz. 2K Cartridge

Working Time: 10 Min
Set Time: 15 Min
Top Coat Time: 0 Min
Cure Time: 1 Hr

* Paintable immediately with most solvent based paint systems.

Dual-Mix Self Leveling Seam Sealer

Dual-Mix Forever Warranty

A two-component epoxy for use on drip rails, roof and trunk seams.

- **Direct to metal on non-flexing roof skins**
- Excellent self leveling properties
- Flows into crevices
- Will not shrink, harden or crack
- Permanently flexible
- Paintable in 15 minutes



39387 | 7 oz. 2K Cartridge

Working Time: 10 Min
Set Time: 15 Min
Top Coat Time: 15 Min
Cure Time: 1 Hr

Dual-Mix™ High-Build Self Leveling Seam Sealer

Dual-Mix Forever Warranty

A two-component, controlled flow epoxy ideal for use on roof seams, drip rails and trunk seams.

- Direct to metal on non-flexing roof skins
- Paintable in 15 minutes
- Will not shrink, harden or crack
- Permanently flexible



39777 | 7 oz. 2K Cartridge

Working Time: 10 Min
Set Time: 15 Min
Top Coat Time: 15 Min
Cure Time: 1 Hr

1K Seam Sealer

A versatile, single component sealer for sealing interior or exterior seams, joints, and voids.

- Direct to metal
- Paintable immediately*
- Remains flexible without shrinking or cracking
- Colors match many OEM sealers
- Optimal working time
- Corrosion resistant
- Resistance weldable
- Excellent adhesion



10.1 oz. Tube
29362 | White
29372 | Gray
29382 | Beige
29392 | Black

Working Time: 5 – 10 Min
Top Coat Time: 0 – 24 Hr

* Paintable immediately with most solvent based paint systems.

1K Sprayable Seam Sealer

A high performance, modified silane polymer seam sealer for duplicating OEM sprayed seams and sound dampening pads.

- Direct to metal
- Paintable immediately*
- Excellent adhesion
- Remains flexible without shrinking or cracking
- Color variety to match OEM sealers
- Optimal working time



9.5 oz. Tube
29462 | White
29472 | Gray
29482 | Beige
29492 | Black

Working Time: 5 – 10 Min
Top Coat Time: 0 – 24 Hr

* Paintable immediately with most solvent based paint systems.

SOUND DAMPENING

Sound dampening is the key to reducing noise and vibration when completing repairs on roofs, quarter panels or other vehicle cavities. SEM products are formulated with this solution in mind.



Dual-Mix Panel Vibration Control Material

Dual-Mix Forever Warranty

A two-component epoxy/urethane blend for reducing noise and vibration on roof skins and intrusion beams.

- Excellent sag resistance
- Reduces noise and vibration
- Protects against corrosion
- Superior flexibility
- Up to 60 minutes of working time



39977 | 7 oz. 2K Cartridge

Working Time: 1 Hr
Set Time: 1 Hr
Cure Time: 1 Hr

Dual-Mix Flexible Urethane Foam

Dual-Mix Forever Warranty

A two-component, urethane, expanding foam that stops vibration and dampens sound in most voids.

- Excellent sound dampening qualities
- Stops panel flutter
- 10X volume expansion
- Does not require moisture to cure
- Resists shrinking
- Bonds to most substrates



39357 | 7 oz. 2K Cartridge

Working Time: 15 Sec
Set Time: 2 Min
Top Coat Time: 15 Min

Dual-Mix™ Rigid Urethane Foam

Dual-Mix Forever Warranty

A two-component, urethane expanding foam for filling pillars, posts, and box sections.

- Meets UL 94HB flammability tests
- Restores crash parts to OEM condition
- Superior expansion
- Reinforces weak panels
- Fast cure
- Bonds to most substrates



39997 | 7 oz. 2K Cartridge

Working Time: 45 Sec

Set Time: 5 Min

Top Coat Time: 15 Min

Dual-Mix Sound & Seal Sprayable Coating

Dual-Mix Forever Warranty

A unique sprayable epoxy/urethane blend for replacing OEM coatings under rocker panels, in trunks, and on floor sections and frame rails.

- Will not shrink, harden or crack
- Retains flexibility
- Excellent adhesion to properly prepped surfaces
- Paintable in 30 minutes



40977 | 7 oz. 2K Cartridge

Working Time: 10 Min

Set Time: 15 Min

Top Coat Time: 30 Min

Cure Time: 1 Hr

FILLERS & GLAZES

When repairing pinholes, scratches and minor damage, SEM has a range of high quality products to suit your needs. All SEM fillers and glazes come with the same cream hardener reducing likelihood of hardener errors.



Metal Bite™ Finishing Glaze

A two-component polyester finishing glaze that quickly fills sand scratches and other minor imperfections.

- Fast drying to a tack-free finish
- Seals the repair area and prevents staining
- Exceptional sanding and feather edge
- Outstanding adhesion
- Use on aluminum, steel, SMC and fiberglass



39592 | 24 oz. Tube

39128 | 1 oz. Hardener included

Working Time: 3 – 5 Min

Sand Time: 10 – 15 Min

Bumper Bite™ Flexible Glaze

A two-component flexible polyester filler that quickly fills sand scratches, pinholes, and other minor imperfections on many automotive substrates.

- Smooth, tack free finish
- Superior sanding qualities
- Stays flexible
- Excellent adhesion
- Dries quickly
- Use on most plastics, aluminum and metal



40482 | 16 oz. Tube

39128 | 1 oz. Hardener included

Working Time: 4 – 7 Min

Sand Time: 10 – 15 Min

Carbo Fill+™

A carbon fiber enriched filler for repairing SMC, fiberglass, PP, steel and aluminum.

- Carbon fiber for added strength
- Prevents swelling
- Resists staining and shrinkage
- Eliminates halo effect
- Easy to sand in 10-15 minutes
- Excellent corrosion control



40542 | 16 oz. Tube

39128 | 1 oz. Hardener included

Working Time: 3 – 5 Min

Sand Time: 10 – 15 Min

REPAIR EQUIPMENT

Applicators, tips and accessories for professional and efficient application of SEM repair materials.



2K REPAIR EQUIPMENT



Universal Manual Applicator

An applicator for dispensing all **Dual-Mix** 7 oz. 2K cartridges.

71119 | Applicator

- Ensures proper mix ratio
- Ideal gear ratio for smooth dispersion
- Release button for precision



Universal Pneumatic Applicator

A dispensing gun for 7 oz. cartridges.

70039 | Applicator

- Use with both 1:1 and 2:1 ratio products
- Decreases fatigue
- Increases efficiency
- Smooth even dispensing
- Adjustable flow rate
- Use with **Quick Spray System**

1.7 oz. Manual Applicator

Convenient and compact for dispensing 1.7 oz. cartridges. Material is dispensed quickly and consistently.

- Ensures proper mix
- Ideal for small repairs
- Mechanical advantage for easy dispensing



70019 | Applicator

2K REPAIR ACCESSORIES

Integral Nut Square Static Mixer

Mixing tips for use with two-component 7 and 10 oz. cartridge products.

70011 | 6 Pack
70012 | 50 Pack



Versa-Tip

Create ribbon beads out of 7 oz. seam sealer cartridges.

70070 | 6 Pack



1.7 oz. Turbo Static Mixer

Mixing tips for use with 1.7 oz. **Dual-Mix** cartridge products.

70020 | 6 Pack
70021 | 50 Pack



Quick Spray System Static Mixer

Extended mixing tips for use when spraying seam sealers and sound dampening materials.

70103 | 6 Pack



QUICK SPRAY SYSTEM AND ACCESSORIES EQUIPMENT

Quick Spray System Starter Kit

Everything necessary to start spraying two-component sealers and sound dampening materials.

- Duplicate OEM sprayed seams
- Easy assembly and clean up
- For use on trunks, doors, wheel wells and more



NOTE:

70039 Universal Pneumatic Applicator is not included in the **70100** kit. Only use the **Quick Spray System** with specified **SEM** products.

70100 | Quick Spray System Starter Kit

- Contains:**
- 6 Quick Spray System Static Mixers
 - 1 Air Baffle
 - 1 Adapter Assembly
 - 1 Retaining Ring
 - 1 Round Air Cap
 - 1 Flat Air Cap
 - 1 PU Tubing

USE WITH:

- 39377 Dual-Mix™ Seam Sealer
- 39477 Dual-Mix Beige Seam Sealer
- 40377 Dual-Mix Heavy Bodied Black Seam Sealer
- 40477 Dual-Mix Heavy Bodied White Seam Sealer
- 40977 Dual-Mix Sound & Seal Sprayable Coating

Adapter Assembly

An air regulator and hose for the **Quick Spray System** only.

70104 | Assembly



Air Baffle

Atomization tips used with the **Quick Spray System** only.

70106 | 5 Pack



Round Air Assembly

A round air cap and baffle for use in the **Quick Spray System** only.

70101 | Assembly



Flat Air Assembly

A flat air cap and baffle for use in the **Quick Spray System** only.

70102 | Assembly



1K REPAIR EQUIPMENT AND ACCESSORIES



1K Pneumatic Applicator

An air-driven applicator gun designed for use with our **1K Seam Sealers**.

29342 | Applicator

- Reduces hand fatigue
- Adjustable flow rate
- Dispenses product consistently
- Ideal for frequent use or large jobs



1K Sprayable Seam Sealer Applicator

A premium applicator for **1K Sprayable Seam Sealers**.

29442 | Applicator

- Fully adjustable to match any sprayed seams
- Spray sound dampening pads
- Tight patterns with minimal overspray
- Able to apply material in beads
- No clean up if used regularly

1K Seam Sealer Nozzle

Designed for use with **1K Seam Sealers**.

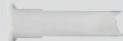
29352 | 15 Pack



1K Doorskin Nozzle

Designed for use with the **1K Sprayable Seam Sealer Applicator**.

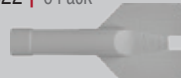
29312 | 6 Pack



1K Extrusion Nozzle

Designed for use with the **1K Sprayable Seam Sealer Applicator**.

29322 | 6 Pack



Sprayable Seam Sealer Gun Cleaner

Cleans the **1K Sprayable Seam Sealer Applicator**.

29433 | 20 oz. Aerosol

See page 3 for complete details.



FLEET LINE™ REPAIR

Commercial fleet repair – simplified. Fleet Line products are optimized to work on multiple surfaces and repairs, reducing SKUs and improving inventory.



Fleet Line™ Composite Adhesive and Repair

A two-component, fiber-enriched, epoxy used for bonding and/or cosmetic repair of composite plastics, such as SMC, fiberglass and carbon fiber as well as Metton™ and other rigid plastics.

- One product for bonding and repair
- Exceptional bonding strength
- Outstanding sanding and feather edging
- Heat set options available
- Fiber-enriched formula helps control swelling and halos
- Easy to dispense and spread



NEW

43110 | 10 oz. 2K Cartridge

Working Time: 35 Min
Set Time: 3 Hr
Sand Time:
 With Air Dry: 3 Hr
 With Paint Booth: 30 Min
 With Heat Lamp: 10 Min

Fleet Line 3 Minute General Purpose Adhesive

A two-component, black, urethane adhesive with a 3 minute working time for general purpose bonding and repairing of plastic, steel, aluminum, glass, SMC and fiberglass parts.

- High strength and sandable
- Bonds multiple substrates
- 3 minute working time
- Non-sag formula



NEW

43310 | 10 oz. 2K Cartridge

Working Time: 3 Min
Set Time: 30 Min
Cure Time: 24 Hr

Fleet Line Flexible Plastic Repair

A two-component, 15 minute sandable epoxy for repairing most flexible plastic parts without an adhesion promoter.

- Exceptional sanding and feather edging
- Remains flexible after cure
- No adhesion promoter
- Compatible with all polyester glazes and putties



NEW

43210 | 10 oz. 2K Cartridge

Working Time: 7 Min
Sand Time: 15 Min
Top Coat Time: 20 Min
Cure Time: 1 Hr

Fleet Line White Seam Sealer

A two-component, high viscosity, epoxy seam sealer for use on interior or exterior seams, joints and voids.

- Direct to metal
- Paintable immediately with most solvent based coatings
- High viscosity, non-sag formula
- Remains flexible after cure
- True white non-yellowing color



NEW

43410 | 10 oz. 2K Cartridge

Working Time: 10 Min
Set Time: 15 Min
Top Coat Time:
 Most Solvent-Based: 0 Min
 Waterborne: 15 Min
Cure Time: 1 Hr



Fiberglass Cloth

4" X 12' roll of woven fiberglass cloth for reinforcing the backside repair of cracks or tears of composite plastics.

70025 | 4" x 12' Roll



Release Film

5" X 12' roll of polyethylene plastic creates a barrier between repair materials and allows technicians to mold or press the product into place, then peel off effortlessly.

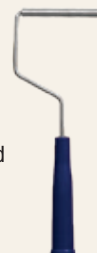
70026 | 5" x 12' Roll



Fiberglass Roller

3/8" X 3" aluminum roller presses composite repair materials into place to improve adhesion and remove air pockets. Best when used with 70026 Release Film.

70027 | Roller





NEW

Fleet Line™ Manual Applicator

A heavy-duty manual applicator for 10 oz. **Fleet Line** cartridges. Ergonomically designed, well balanced and a 26:1 gear ratio provides nearly effortless dispensing even the thickest materials. Accepts most 1:1, 7 oz. and 10 oz. cartridges.

71139 | Applicator

- Ideal gear ratio
- Heavy duty chassis
- Works with 7 and 10 oz., 1:1 cartridges
- Ergonomically designed



NEW

Fleet Line Pneumatic Applicator

A high performance, air-operated applicator for 10 oz. **Fleet Line** cartridges. Lightweight and well balanced, this applicator reduces technician hand fatigue commonly experienced with some manual applicators. Accepts most 1:1, 7 and 10 oz. cartridges.

70059 | Applicator

- Adjustable flow rate
- Increases efficiency
- Decreases fatigue
- Works with 7 and 10 oz. 1:1 cartridges
- Consistent, even dispensing

CLEARs

Durability, gloss and optimal performance on every job. Technicians experience easy application and fast dry times without dieback, no matter the VOC level or mix ratio. SEM clears maintain their finish for years.



World Class™ EZ Finish™ Clearcoat

4.4 VOC | 4:1 Mix

A production oriented, national rule urethane clearcoat for exceptionally easy application and refinishing.

- 24 Month Warranty
- Simple 2 coat application
- Excellent leveling
- High gloss & DOI
- Cures quickly and thoroughly
- Exceptional sand and buff properties
- Excellent UV protection



- 50501 | Clearcoat | Gallon
- 50504 | Clearcoat | Quart
- 50554 | Fast Activator | Cone Quart
- 50556 | Fast Activator | Half Pint
- 50564 | Medium Activator | Cone Quart
- 50566 | Medium Activator | Half Pint
- 50574 | Slow Activator | Cone Quart
- 50576 | Slow Activator | Half Pint

World Class Universal Clearcoat

4.2 VOC | 4:1 Mix

A high quality, versatile, two-component urethane clearcoat for collision shops.

- 24 Month Warranty
- Great product at mid-grade price
- Two coat application
- Superior vertical hold
- Exceptional gloss and DOI
- Chemical resistant
- Easy to buff
- Excellent UV protection



- 50421 | Clearcoat | Gallon
- 50424 | Clearcoat | Quart
- 50444 | Air Dry Activator | Cone Quart
- 50446 | Air Dry Activator | Half Pint
- 50454 | Fast Activator | Cone Quart
- 50456 | Fast Activator | Half Pint
- 50464 | Medium Activator | Cone Quart
- 50466 | Medium Activator | Half Pint
- 50474 | Slow Activator | Cone Quart
- 50476 | Slow Activator | Half Pint

World Class 4.2 VOC Euro Clear

4.2 VOC | 2:1 Mix

A high quality, national rule, two-component urethane clearcoat for productive collision shops.

- 24 Month Warranty
- Excellent flow and leveling
- Exceptional gloss and DOI
- Chemical resistant
- Easy to buff
- Excellent UV protection
- 4 activator speeds



- 50809 | Clearcoat | 5.0 Liter
- 50842 | Extra Fast Activator | 2.5 Liter
- 50852 | Fast Activator | 2.5 Liter
- 50862 | Medium Activator | 2.5 Liter
- 50872 | Slow Activator | 2.5 Liter

World Class Production Clearcoat

2.1 VOC | 4:1 Mix

A 2.1 VOC two-component, full cure urethane clearcoat for collision facilities in regulated areas.

- 24 Month Warranty
- Great product at mid-grade price
- 2 coat application
- Excellent vertical hold
- Firm after bake
- Easy to buff
- Excellent UV protection



- 50211 | Clearcoat | Gallon
- 50214 | Clearcoat | Quart
- 50254 | Fast Activator | Cone Quart
- 50256 | Fast Activator | Half Pint
- 50264 | Medium Activator | Cone Quart
- 50266 | Medium Activator | Half Pint
- 50274 | Slow Activator | Cone Quart
- 50276 | Slow Activator | Half Pint

World Class 2.1 VOC Euro Clear

2.1 VOC | 2:1 Mix

A higher solids, 2.1 VOC compliant, two-component clearcoat for collision shops in regulated areas.

- 24 Month Warranty
- Great product at mid-grade price
- Exceptional appearance
- Chemical resistant
- Easy to buff
- Excellent UV protection



- 50709 | Clearcoat | 5.0 Liter
- 50752 | Fast Activator | 2.5 Liter
- 50762 | Medium Activator | 2.5 Liter
- 50772 | Slow Activator | 2.5 Liter

World Class™ Accelerator

Increases productivity by reducing full cure time of urethane coatings.

- Reduces cure times
- Cuts handle time by 25%
- Only 0.5 oz. needed per sprayable quart
- For use with all **World Class** clears



50918 | Pint

1K HS Clear

Improved Formula

Perfect for refinishing small accessories, door jambs, and new part cut-ins.

- Improved fan pattern is second only to a spray gun
- Increased gloss for a showroom finish
- Lays flat to blend perfectly with spray gun patterns
- Quick drying for increased production
- Shop floor compliant (NESHAP)
- Save time and material



40903 | 20 oz. Aerosol

Find out how to reduce labor up to 85% using the **OEM Refinishing System™** on page 22.

1K HS Semi-Gloss Clear

Improved Formula

A mid-gloss, aerosol, acrylic clearcoat for duplicating OEM lower gloss panels.

- Matches underhood gloss
- Quick-drying for increased production
- Shop floor compliant (NESHAP)
- Professional spray pattern
- Sprays evenly without streaks
- Saves mixing time and eliminates waste



40913 | 20 oz. Aerosol

Find out how to reduce labor up to 85% using the **OEM Refinishing System** on page 22.

Blenz-In

An aerosol blending solvent designed to melt the edge of two-component urethane refinish top coats into the existing coating. It allows users to keep repairs to a single panel by creating an invisible blend.

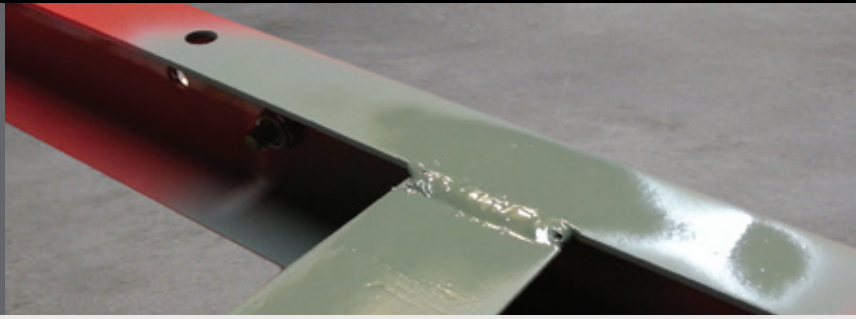
- Saves time and money
- Seamless blends
- Use with most clearcoats
- 100% UV stable



38403 | 20 oz. Aerosol

PRIMERS

SEM fast drying primers achieve ideal film build, and apply and sand easily. With a product for every substrate, application, and environment, SEM primers are a great foundation for solvent or waterborne color.



World Class™ DTM Primer

2.1 VOC | 4:1 Mix

A VOC compliant two-component epoxy that provides bare metal adhesion and filling in one product.

- 2.1 mixed VOC
- Outstanding adhesion on steel, fiberglass, aluminum
- Excellent corrosion control
- Builds quickly, sands easily
- Excellent color holdout
- Rollable or sprayable



- 50121 | Primer | Gallon
- 50124 | Primer | Quart
- 50134 | Activator | Cone Quart
- 50136 | Activator | Half Pint

World Class HS Urethane Primer

4.2 VOC | 4:1 Mix

A premium, high build, two-component, urethane primer formulated for use on automotive substrates.

- 4.2 mixed VOC
- Outstanding adhesion
- Excellent filling properties
- Sands quickly
- Excellent color holdout
- Available in gallons and quarts



- 50151 | Primer | Gallon
- 50154 | Primer | Quart
- 50444 | Air Dry Activator | Cone Quart
- 50446 | Air Dry Activator | Half Pint
- 50454 | Fast Activator | Cone Quart
- 50456 | Fast Activator | Half Pint
- 50464 | Medium Activator | Cone Quart
- 50466 | Medium Activator | Half Pint
- 50474 | Slow Activator | Cone Quart
- 50476 | Slow Activator | Half Pint

World Class Acrylic Primer Surfacer

2.1 VOC | 1:1 Mix

A VOC compliant coating for quick and easy priming of spots or complete panels.

- 2.1 VOC compliant
- Excellent filling properties
- Sands quickly
- Good color holdout
- Excellent adhesion



- 50101 | Gallon
- 50104 | Quart

World Class Waterborne Flexible Primer

2.1 VOC | Ready to Spray

A water-based flexible surfacer designed for automotive bumper refinishing.

- Superior flexibility and adhesion
- Works as a barrier coat to prevent lifting
- Excellent filling properties
- Easy to sand
- VOC Compliant and environmentally safe
- Saves time and labor
- Ready to spray – no mixing



- 50184 | Quart

High-Build Primer Surfacer

Improved Aerosol

A flexible acrylic coating for priming steel, aluminum, urethane, fiberglass and plastics.

- Provides superior adhesion
- Excellent filling properties
- Works on flexible or rigid substrates
- Easy to sand
- Topcoat with most refinish material



- 20 oz. Aerosol
- 42003 | Black
 - 42013 | Gray
 - 42023 | Beige
 - 42033 | Rose
 - 42043 | White

Self Etching Primer

VOC Compliant

Improved Aerosol

Provides excellent adhesion and corrosion resistance to properly prepped steel, aluminum and stainless steel.

- Excellent adhesion to steel, aluminum and stainless steel
- Quick drying
- 3 colors available - black, gray and green
- Bulk products are VOC compliant
- Packaged in gallons, quarts and aerosols



- 39671 | Black | Gallon
- 39673 | Black | 20 oz. Aerosol
- 39674 | Black | Quart
- 39681 | Gray | Gallon
- 39683 | Gray | 20 oz. Aerosol
- 39684 | Gray | Quart
- 39691 | Green | Gallon
- 39693 | Green | 20 oz. Aerosol
- 39694 | Green | Quart

Copperweld™ and Brushable Copperweld

A weld-through primer for superior corrosion protection between welded substrates.

- Copper and zinc enriched
- Exceptional conductivity
- Minimizes the heat zone
- Reduces distortion and splatter
- Superior corrosion protection
- Fast coverage and dry time



- 40783 | 20 oz. Aerosol
- 40786 | Brushable | 8 oz. can

Note: Only 40783 is OEM recommended

Flexible Primer Surfacer

A flexible, sandable primer capable of adhering to difficult plastics and hiding minor surface defects.

- Ready to spray
- Quick drying
- Easy to sand
- Flexible formulation
- Topcoat with most refinish materials



- 39131 | Gallon
- 39133 | 16 oz. Aerosol
- 39134 | Quart

Waterborne Flexible Primer

2.1 VOC Compliant

A waterborne flexible coating for priming urethanes, plastics and other similar substrates.

- Superior adhesion
- Excellent sealing properties
- VOC compliant and environmentally friendly
- High solids formula
- Topcoat with most refinish material
- Sands easily
- Saves time and labor
- Ready to spray – no mixing



- 39221 | Gallon

Metalock™ DTM High Build Primer

A two-component, epoxy primer for use on steel, aluminum, SMC and fiberglass.

- Superior adhesion
- Outstanding corrosion protection
- Exceptional filling properties
- High build formula
- Sealer mixing option
- Easy to sand



- ML010 | Kit

KIT CONTAINS:

- 1 – ML011 | Primer | Gallon
- 1 – MLH14 | Hardener | Quart

SOLD SEPARATELY:

- ML014 | Primer | Quart
- MLH16 | Hardener | Half Pint

Weld-Thru Primer

A zinc-enriched coating that provides corrosion protection between welded substrates while minimizing distortion and welding splatter.

- Superior corrosion protection between welded parts
- Excellent adhesion
- Ideal conductivity
- Fast drying
- Applies easily



- 39783 | 16 oz. Aerosol

Guide Coat Black

Helps detect low spots, sand scratches or other minor imperfections while sanding primer.

38203 | 16 oz. Aerosol

- Quick drying
- Improves production
- Will not clog sandpaper
- Helps create a perfect repair



Premium Powder Guide Coat

A dry powder for identifying low spots, pinholes and other surface defects when sanding primer.

38253 | 16 oz. Aerosol

NEW

- Dries instantly
- Sandable immediately
- Will not clog sandpaper
- No masking required
- No mess or waste
- Overspray wipes off



BUMPER COATERS

Increase shop revenue by repairing or restoring bumper covers. With multiple OEM matched colors and formulas to eliminate adhesion promoter or meet VOC restrictions, SEM Bumper Coater™ is the perfect choice.



Flexible Bumper Coater

A line of advanced coatings formulated to restore the OEM finish on automotive bumpers and plastic cladding.

- **No adhesion promoter required**
- **No primer required**
- Excellent adhesion and durability
- Matches OEM appearance
- Retains flexibility
- Great coverage
- Professional results



39101 | Black | Gallon
39103 | Black | 16 oz. Aerosol
39104 | Black | Quart

Low VOC Bumper Coater

2.8 VOC Compliant

A black, flexible coating designed for easy reconditioning of most plastic bumpers.

- Superior adhesion
- OEM matched color and gloss
- Great for flexible or rigid substrates
- Easy to apply
- Excellent hiding
- Available in gallons and quarts



39101-LV | Black | Gallon
39104-LV | Black | Quart

Bumper Coater Aerosols

A line of advanced coatings formulated to restore the OEM finish on automotive bumpers and plastic cladding.

16 oz. Aerosol

- | | |
|------------------------|-------------------------------|
| 39073 Gloss Silver | 39193 Dk Gray |
| 39083 Gloss Black | 39253 Med Titanium Metallic |
| 39103 Flexible Black | 39263 Dk Titanium Metallic |
| 39153 Charcoal | 39273 Charcoal Metallic |
| 39163 Med Smoke | 39283 Lt Titanium Metallic |
| 39173 Dk Smoke | 39293 Honda Black |
| 39183 Med Gray | |

- **No adhesion promoter required**
- **No primer required**
- Excellent adhesion and durability
- Matches OEM appearance
- Retains flexibility
- Great coverage
- Professional results





OEM TESTED. OEM TRUSTED.
OEM RECOMMENDED.



**ADHESIVES • FOAMS • PANEL BONDING ADHESIVES • PLASTIC REPAIR • SEAM SEALERS
 • SPECIALTY COATINGS • CHIP GUARD COATINGS • UNDERCOATINGS**

 **BUILT BETTER™
 IN THE USA**

OEM REFINISHING SYSTEM™

Reduce cycle time to increase throughput with SEM's OEM Refinishing System. Shop floor compliant (NESHAP) aerosols eliminate mixing paint, waiting on a painter, tying up the paint booth, and cleaning spray guns. Now you can quickly refinish support parts, cut-ins and jambs.



Factory Pack™

A unique, time saving aerosol basecoat for jambs, cut-ins, small accessories, and touch ups.

- 180 crossovers from 17 car manufacturers
- Saves hours per job
- Lower material cost
- Reduces booth bottlenecks
- Superior adhesion, flexibility, and hiding
- Shop floor compliant (NESHAP)
- Should be clear coated



16 oz. Aerosol

Crossover manufacturers include Ford, Honda, Toyota, GM, BMW, Chrysler, Hyundai, Kia, Mazda, Mercedes and Nissan.

- 19013 | Silver Frost
- 19023 | White
- 19033 | Dk Shadow Grey
- 19043 | Redfire Pearl
- 19053 | Torreador Red Metallic
- 19063 | Pueblo Gold
- 19073 | Vermillion
- 19083 | Dk Blue Pearl
- 19093 | Silver Metallic
- 19103 | Black

- 19133 | Atomic Blue
- 19143 | Black Pearl
- 19163 | Alabaster Silver
- 19173 | Desert Mist Metallic
- 19183 | Royal Blue Pearl
- 19193 | Polished Gray Metallic
- 19203 | Milano Red
- 19213 | Tango Red
- 19223 | Taffeta White
- 19233 | Mocha Metallic

- 19253 | Millenium Silver
- 19263 | Lunar Mist Metallic
- 19273 | Phantom Gray
- 19283 | Super White
- 19293 | Black
- 19303 | Titanium
- 19313 | Desert Sand Pearl
- 19323 | Natural White
- 19353 | Red Pearl
- 19363 | Magnetic Gray Pearl

- 19373 | White
- 19393 | Victory Red
- 19403 | Olympic White
- 19423 | Black
- 19433 | Lt. Tarnished Silver
- 19443 | Galaxy Silver Metallic
- 19453 | Cashmere
- 19463 | Dk. Blue Metallic
- 19473 | Pewter Metallic
- 19483 | Gold Mist Metallic

Ez Coat™

The original direct to metal coating that matches the color and gloss of factory primer and e-coat colors.

16 oz. Aerosol

- Duplicates factory appearance
- Direct to steel and aluminum
- Quick curing and hiding
- Available in 9 popular OEM colors
- Paintable with most automotive basecoats
- Excellent corrosion control
- Shop floor compliant (NESHAP)



- 62213 | Black
- 62223 | Olive Green
- 62233 | Light Green
- 62243 | Gray
- 62253 | Tan
- 62263 | Olive Brown
- 62273 | White
- 62283 | Field Drab **New Color**
- 62293 | Dark Green **New Color**

Ez Coat 6 Pack Assortment

The original direct to metal coating that matches the color and gloss of factory primer and e-coat colors. Contains 1 each of Black, Olive Green, Light Green, Gray, Tan and Olive Brown.

62209 | 6 Pack



Aerosol Clears

Improved Formula

Perfect for protecting refinish color on small accessories, door jambs, and new part cut-ins.

- 40903 | Gloss | 20 oz. Aerosol
- 40913 | Semi-Gloss | 20 oz. Aerosol

See page 17 for complete details.



BEFORE

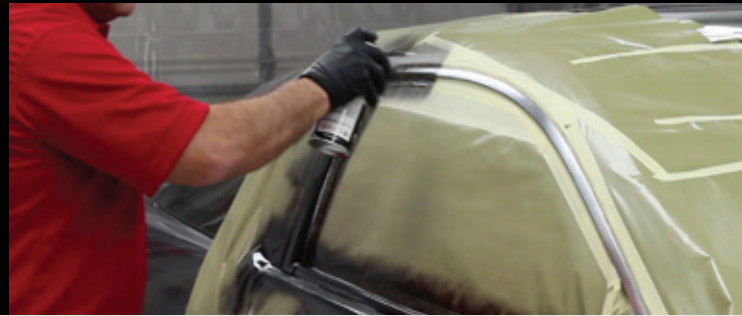


AFTER



TRIM PAINTS

The standard by which all others are measured, SEM Trim Black professionally restores the OEM look of automotive trim components. With several options to match color and gloss, SEM brings high performance flexibility and color stability to each job.



Trim Black

The Industry Standard

An acrylic coating formulated to match the OEM finish on automotive trim components. For use on plastic, aluminum, steel, stainless steel and chrome.

- Excellent adhesion and durability
- No primer required
- Matches OEM appearance
- Retains flexibility
- Great coverage
- Professional results



39141 | Gallon
39143 | 20 oz. Aerosol
39144 | Quart

Trim Black Euro Jet

The Next Generation

An OEM matched coating for automotive trim components. Deeper jet black finish restores European OEM color.

- Deeper jet black
- Restores OEM appearance
- Ideal fan pattern
- Fast hiding
- Excellent adhesion
- Professional durability
- No primer necessary
- Remains flexible



41013 | Matte | 16 oz. Aerosol
41023 | Satin | 16 oz. Aerosol
41024 | Satin | Quart
41033 | Gloss | 16 oz. Aerosol

Low VOC Trim Black

The Industry Standard

2.8 VOC Compliant

An acrylic coating formulated to match the OEM finish on automotive trim components. For use on plastic, aluminum, steel, stainless steel and chrome.

- Excellent adhesion and durability
- No primer required
- Matches OEM appearance
- Retains flexibility
- Great coverage
- Professional results



39141-LV | Gallon
39144-LV | Quart

Trim Black Gloss Black

The Industry Standard

An acrylic coating formulated to match the OEM finish on automotive trim components. For use on plastic, aluminum, steel, stainless steel and chrome.

- Excellent adhesion and durability
- No primer required
- Matches OEM appearance
- Retains flexibility
- Great coverage
- Professional results



39063 | 16 oz. Aerosol
39068 | Pint

Trim Black Charcoal Metallic

The Industry Standard

An acrylic coating formulated to match the OEM finish on automotive trim components. For use on plastic, aluminum, steel, stainless steel and chrome.

- Excellent adhesion and durability
- No primer required
- Matches OEM appearance
- Retains flexibility
- Great coverage
- Professional results



39033 | 16 oz. Aerosol

FLEXIBLE COATINGS

Refinishing or restoring leather, vinyl and plastic is at the core of SEM. These time-tested permanently flexible and fade resistant coatings continue to lead the automotive, aerospace and marine markets.



Classic Coat™

A line of OEM matched aerosols for renewing or restoring leather and vinyl.

- Excellent for vinyl and leather
- Superior adhesion, flexibility and hiding
- Will not crack
- Quick drying
- Simple to use



16 oz. Aerosol

35 Colors

- 17013 | Midnight Black
- 17023 | Lt Graphite
- 17033 | Lt Parchment
- 17043 | Med Graphite
- 17053 | Med Parchment
- 17063 | Med Prairie Tan
- 17073 | Med Dk Graphite
- 17083 | Dk Graphite
- 17093 | Black

- 17103 | Dk Gray
- 17113 | Graphite
- 17123 | Lt Gray
- 17133 | Lt Neutral
- 17143 | Lt Oak
- 17163 | Med Dk Pewter
- 17173 | Med Gray
- 17183 | Med Neutral
- 17203 | Shale

- 17213 | Very Dk Gray
- 17223 | Very Dk Pewter
- 17243 | Taupe
- 17263 | Classy Gray
- 17293 | Ivory
- 17313 | Tan
- 17323 | Creamy Ivory
- 17353 | Silver Gray
- 17363 | Lt Graystone

- 17373 | Dk Slate Gray
- 17383 | Med Lt Stone
- 17393 | Lt Stone
- 17403 | Camel
- 17413 | Lt Cashmere
- 17423 | Med Cashmere
- 17433 | Very Dk Cashmere
- 17503 | Limo Flat Black

Texture Coating

A unique blend of flexible materials for restoring the textured finish on bumpers, dashes, fiberglass tops and other plastic parts prior to painting.

- Duplicates original textures
- Ready to spray
- Quick drying
- Topcoat with most refinish materials



39853 | 20 oz. Aerosol

39854 | Quart

Super SEM Flex

A paint additive that adds flexibility to urethanes, enamels and lacquers. Perfect for refinishing flexible substrates such as bumpers, vinyl convertible tops and flexible plastics.

- Use with most paint systems
- Adds chip resistance
- Improves gloss
- Ideal with **Color Coat™** for vinyl convertible tops



39728 | Pint

Leather and Vinyl Repair Compound

A filler for flexible interior substrates.

38422 | 3 oz. Tub



Interior Graining Pads

Used to duplicate interior grains when using repair compounds.

70022 | 6 Pack



Sure-Coat™ Mixing System

VOC Compliant

A waterborne coating system that provides outstanding flexibility and adhesion for refinishing most leather, vinyl, and plastic.

- Superior resins provide great adhesion and durability
- Retains flexibility, will not soften or crack
- Maintains texture of substrate
- 1000s of formulas including many OEM matched colors
- Easy brush or spray application
- Quick drying
- Add cross-linker to resist cleaning chemicals



14 Colors

Sure-Coat Mixing System includes 9 toners, 3 clears, a **Fleet and Foreign Color Selector**, pint labels and **Dauber Bottles**.

Pints

- 16749 | Pint Mixing System
- 16018 | Black*
- 16088 | Silver*
- 16508 | Red Oxide*
- 16518 | Indo Yellow*
- 16528 | Quindo Red*
- 16538 | Thalo Blue*
- 16548 | White*
- 16568 | Thalo Green*
- 16578 | Magenta
- 16588 | Bright Red
- 16598 | Yellow Oxide*
- 16708 | High Gloss Clear*
- 16718 | Satin Gloss Clear*
- 16728 | Low Luster Clear*

* Part of the mixing system

Half Gallons

- 16739 | Half Gallon Mixing System
- 16015 | Black*
- 16085 | Silver*
- 16505 | Red Oxide*
- 16515 | Indo Yellow*
- 16525 | Quindo Red*
- 16535 | Thalo Blue*
- 16545 | White*
- 16565 | Thalo Green*
- 16585 | Bright Red
- 16595 | Yellow Oxide*
- 16705 | High Gloss Clear*
- 16715 | Satin Gloss Clear*
- 16725 | Low Luster Clear*

* Part of the mixing system

Sure-Coat Flattener

An additive to decrease the gloss of **Sure-Coat** colors.

16808 | Pint



Sure-Coat Cross Linker

An additive for **Sure-Coat** that increases its durability from the effects of most cleaning chemicals.

16004 | 4 oz.



Sure-Coat Dauber Bottle

A unique spot applicator for our **Sure-Coat** flexible coating.

70400 | 4 oz. Dauber



Sure-Coat Reducer

A blend of water-based solvents to reduce **Sure-Coat** when necessary.

16754 | Quart



Poly Brush Applicator

A foam brush for use with **Sure-Coat**.

05500 | Brush



Fleet and Foreign Color Selector

A color deck to help users select the proper color of **Sure-Coat** and **Color Coat™**.

70034 | Deck



Flexible Coating Selection

Choosing the proper flexible coating for your substrate is one of the most important parts of repairing your interior and exterior plastic, vinyl, leather, carpet, and velour. With the correct coating, you're guaranteed a long lasting, quality finish.

Flexible Coating	Plastic	Vinyl	Leather	Carpet	Velour
Sure-Coat™	✓	✓	✓		
Color Coat™	✓	✓		✓	✓
Classic Coat™		✓	✓		
Marine Vinyl Coat™	✓	✓			
Marine Engine Paint™	✓				
Aerospace Sure-Coat™	✓	✓	✓		

BEFORE



AFTER



Color Coat™

Improved Aerosol

A specialty, flexible coating formulated to restore or change the color of most vinyl surfaces, carpet and velour. **Color Coat** is not a dye, but a fade-resistant, flexible and permanent coating.

- Refinish vehicle interiors and motorcycle seats
- Enhance automotive carpet and velour
- Superior adhesion, flexibility, and hiding
- Will not crack
- Quick drying and simple to use
- Ready to spray quarts and gallons
- Mixing system available for endless colors

16 oz. Aerosols

50 Colors and 3 Clears

- 13003 | High Gloss Clear
- 13013 | Satin Gloss Clear
- 13023 | Low Luster Clear
- 15003 | Phantom White
- 15013 | Landau Black
- 15023 | Cordovan Brown
- 15033 | Saddle Tan
- 15043 | Shadow Blue
- 15053 | Granite
- 15063 | Burgundy
- 15083 | Silver
- 15093 | Lt Buckskin
- 15103 | Super White
- 15113 | Firethorn Red
- 15123 | Santa Fe
- 15143 | Sandstone
- 15163 | Presidio
- 15173 | Camel
- 15183 | Warm Gray
- 15213 | Bluemist
- 15223 | Castella
- 15233 | Gloss Black
- 15243 | Satin Black
- 15253 | Titanium Metallic
- 15273 | Napa Red
- 15283 | Pescadero Sand
- 15303 | Graphite
- 15313 | White
- 15323 | Palomino
- 15353 | Lt Titanium
- 15363 | Portola Red
- 15373 | Flame Red
- 15393 | Med Gray
- 15413 | Thomas Bus Gray
- 15453 | Gloss White
- 15483 | Bluebird Brown
- 15603 | Sailcloth White

- 15643 | Pacific Blue
- 15713 | Ladera
- 15723 | Monterey
- 15753 | Lt Oak
- 15763 | Storm Gray
- 15793 | Shale
- 15803 | Opel Gray
- 15813 | Med Dk Pewter
- 15823 | Lt Parchment
- 15833 | Khaki
- 15843 | Med Parchment
- 15853 | Ivory
- 15863 | Lt Neutral
- 15873 | Med Slate Gray
- 15883 | Med Neutral
- 15893 | Med Prairie Tan



Aerosols are shop floor compliant (NESHAP)

Color Coat Mixing System

The **Cone Top Mixing System** is for the jobber, shop or mobile technician.

The **Quart Mixing System** is perfect for the jobber or shop to start mixing **Color Coat**.

The **Gallon Mixing System** is for the jobber or shop that mixes **Color Coat** regularly.

- 9 toners and 3 clears
- Convenient pourable containers
- Includes intermix labels and sales aids
- Comes with 5 years of color chips and a **Fleet and Foreign Color Selector**

Gallons

27969 | Gallon Mixing System

- 13001 | High Gloss Clear*
- 13011 | Satin Gloss Clear*
- 13021 | Low Luster Clear*
- 15011 | Landau Black*
- 15081 | Silver*
- 15091 | Lt Buckskin
- 15101 | Super White
- 15311 | White
- 15501 | Red Oxide*
- 15511 | Fast Yellow*
- 15521 | Fast Red*
- 15531 | Fast Blue*
- 15541 | Tinting White*
- 15561 | Fast Green*
- 15581 | Bright Red
- 15591 | Yellow Oxide*

* Part of the mixing system

Cone Top Quarts

27979 | Cone Top Quart Mixing System

- 13006 | High Gloss Clear*
- 13016 | Satin Gloss Clear*
- 13026 | Low Luster Clear*
- 15016 | Landau Black*
- 15086 | Silver*
- 15506 | Red Oxide*
- 15516 | Fast Yellow*
- 15526 | Fast Red*
- 15536 | Fast Blue*
- 15546 | Tinting White*
- 15556 | Fast Orange*
- 15566 | Fast Green*
- 15576 | Magenta
- 15586 | Bright Red
- 15596 | Yellow Oxide*

Quarts

27989 | Quart Mixing System

- 15014 | Landau Black*
- 15084 | Silver*
- 15504 | Red Oxide*
- 15514 | Fast Yellow*
- 15524 | Fast Red*
- 15534 | Fast Blue*
- 15544 | Tinting White*
- 15564 | Fast Green*
- 15594 | Yellow Oxide*



Color Coat Aerosol Blanks

A blank aerosol can that can be filled with any custom color.

Improved Aerosol

- 15993 | Universal Color Coat
- 61983 | Custom Fill™ Color Coat



See page 31-32 for complete details.

Fleet and Foreign Color Selector

320 solid and metallic color deck to help users select the proper color of **Sure-Coat** and **Color Coat**.

- 70034 | 1 Deck



Color Coat Flattener

An additive that lowers gloss and adds versatility when custom matching **Color Coat** intermix formulas.

- 13038 | Pint



Tac Free

A flexible satin top coat used to eliminate plasticizer migration on coated surfaces.

- Eliminates tackiness on refinished vinyl
- Wet on wet application saves time
- Protective coating
- Resistant to alcohol based cleaners



- 39643 | 16 oz. Aerosol

AEROSPACE

Restore aircraft interior leather, vinyl and plastics. SEM offers coatings that meet FAA flammability guidelines, allowing you to repair your interior at a fraction of the cost of replacement.



Aerospace Plastic & Leather Prep

A mild solvent blend to properly clean plastic and leather prior to refinishing.

A38353 | 16 oz. Aerosol



- Removes mold release agents, fingerprints and grease
- Promotes adhesion of top coat
- Will not soften or distort plastic parts
- Easy to use

Aerospace SEM Soap

A mild abrasive cleaner used as the first step in refinishing flexible substrates.

A39362 | 16 oz. Tube



- Gravitates into surface and floats contaminants for easy removal
- Mild abrasive helps with adhesion
- Foaming action removes body oils and other water soluble contaminants

Aerospace Sure-Coat™ Mixing System

VOC Compliant

A waterborne coating system that offers excellent flexibility and outstanding adhesion for a variety of aerospace applications.

- Excellent for leather, vinyl and plastic
- Meets FAR's 23.853, 25.853(a) and (c), 27.853 and 29.853
- Can be brushed or sprayed
- Mixing system = endless colors
- Superior resins provide great adhesion, flexibility and durability
- Easy to use
- Quick drying



14 Colors

Aerospace Sure-Coat Mixing System includes 9 toners, 3 clears, and an **Aerospace Fleet and Foreign Color Selector**, pint labels and **Dauber Bottles**.

Pints

A16749 | Pint Mixing System

- A16018 | Black*
- A16088 | Silver*
- A16508 | Red Oxide*
- A16518 | Indo Yellow*
- A16528 | Quindo Red*
- A16538 | Thalo Blue*
- A16548 | White*
- A16568 | Thalo Green*
- A16578 | Magenta
- A16588 | Bright Red
- A16598 | Yellow Oxide*
- A16708 | High Gloss Clear*
- A16718 | Satin Gloss Clear*
- A16728 | Low Luster Clear*

* Part of the mixing system

Half Gallons

A16739 | Half Gallon Mixing System

- A16015 | Black*
- A16085 | Silver*
- A16505 | Red Oxide*
- A16515 | Indo Yellow*
- A16525 | Quindo Red*
- A16535 | Thalo Blue*
- A16545 | White*
- A16565 | Thalo Green*
- A16585 | Bright Red
- A16595 | Yellow Oxide*
- A16705 | High Gloss Clear*
- A16715 | Satin Gloss Clear*
- A16725 | Low Luster Clear*

* Part of the mixing system

Aerospace Sure-Coat Flattener

An additive to decrease the gloss of **Sure-Coat** colors.

A16808 | Pint



Sure-Coat Dauber Bottle

A unique spot applicator for our **Sure-Coat** flexible coating.

70400 | 4 oz. Dauber



Poly Brush Applicator

A foam brush for use with **Sure-Coat**.

05500 | Brush



Aerospace Color Selector

A color deck to help users select the proper color of **Aerospace Sure-Coat**.

A70034 | Deck



Get the latest SEM promotions and products

Contact your SEM Rep for a copy of the SEM Circular.

It's a "Must Read" in every shop.



MARINE

Keep your watercraft looking new, season after season, by restoring the original color to your vinyl seats and plastic components. Save hundreds, if not thousands of dollars, over replacement or recovering.



Engine Paint

A flexible coating formulated to restore the color of plastic marine engine cowlings and other painted metal parts on the stern drive and lower unit.

- Convenient aerosols
- Quick drying
- Excellent for fiberglass, plastic and precoated metal
- Flexible coating – will not crack
- Superior hiding and gloss
- Smooth, consistent finish
- Matches OEM finish
- Excellent corrosion control



16 oz. Aerosol

- M25503 | Evinrude White
- M25513 | Mercury Phantom Black

Vinyl Coat™

A line of flexible aerosol coatings to match, restore or change the color of most marine vinyl and plastic surfaces.

16 oz. Aerosol

25 Colors

- Covers stains, fading and prepped mildew
- Superior adhesion
- Outstanding UV protection
- Stays flexible, will not crack
- Excellent hiding
- Quick drying



- M25003 | Ultra Purple
- M25013 | Ultra Turquoise
- M25023 | Ranger Orchid Green
- M25033 | Ultra Blue
- M25043 | Ranger Admiral Blue
- M25053 | Ranger Black
- M25063 | Ranger White
- M25073 | Ranger Off-White
- M25083 | Carver White

- M25093 | Sea Ray Mystic White
- M25103 | Sea Ray Alabaster
- M25113 | Sea Ray Champagne
- M25123 | Carver Dade Bisque
- M25133 | Carver Light Tan
- M25143 | Chaparral Beige/Platinum
- M25153 | Stingray Taupe
- M25163 | Ranger Beige
- M25173 | Ranger Charcoal

- M25183 | Ranger Gunmetal Grey
- M25193 | Light Gray
- M25203 | Formula Boats Grey
- M25213 | Carver Coco
- M25223 | Stingray Yellow
- M25233 | Formula Boats Red
- M25243 | Sterling Burgundy



GripTide™ Non-Skid Deck Coating

A two-component high quality urethane, grip-enhancing, textured coating that provides a durable, protective finish for boat floors, boat decks and other marine surfaces.

- Adhesion to most surfaces
- 2K technology for durability and a quick cure
- Easy one-step spray or roller application
- Durable coating that maintains flexibility
- Four popular marine colors
- Chemical resistant
- Fade resistant



KIT CONTAINS

- 1 Gallon GripTide Non-Skid Deck Coating
- 1 Cone Quart GripTide Catalyst
- 1 (9) Heavy Texture Roller

Gallon Kits

- M25610 | Sail White
- M25620 | Gull Grey
- M25630 | Mateo Wheat
- M25640 | Sportsman Green
- 71140 | Heavy Texture Roller

GripTide Primer

2.1 VOC Compliant

A 2.1 VOC compliant, two-component primer that provides bare metal adhesion and filling in one product.

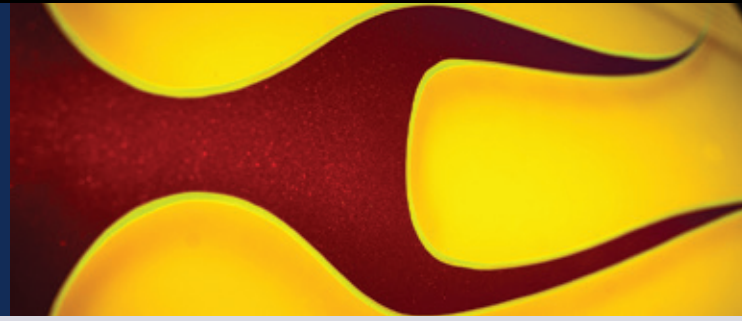
- 2.1 Mixed VOC
- Outstanding adhesion on steel, fiberglass, aluminum
- Excellent corrosion control
- Builds quickly, sands easily
- Excellent color holdout
- Rollable or sprayable



- M25674 | Primer | Quart
- M25686 | Primer Activator | Half Pint

CUSTOM FINISH

Whether your style is bright, chromatic colors or laid-back subtle nuances, SEM offers a product that's right for you. From basecoats, candies, fluorescents and effect pigments to the best selling, high quality line of matte finishes in the industry, SEM has your custom paint needs covered.



Hot Rod Black

The industry leading matte, two-component, single stage black for low gloss accent stripes, hoods or entire vehicles.

- Durable and mar resistant
- Excellent resistance to chalking and fading
- Retains color
- Smooth and uniform finish
- National Rule VOC compliant



HR010 | Kit

KIT CONTAINS:

- 1 – HR014 | Black | Quart
- 1 – HRC06 | Catalyst | Half Pint
- 1 – HRR06 | Reducer | Half Pint

Low VOC Hot Rod Colors

2.8 VOC Compliant

The leading matte finish, two-component, single stage topcoat system for low gloss accent stripes, hoods, or entire vehicles.

- Durable and mar resistant
- Excellent resistance to chalking and fading
- Retains color
- Smooth and uniform buff-free finish
- 2.8 VOC compliant
- Black, silver, smoke & white
- Intermix for one-off colors



- HR010-LV | Black | Kit
- HR020-LV | Silver | Kit
- HR030-LV | Smoke | Kit
- HR040-LV | White | Kit

KIT CONTAINS:

- 1 – LOW VOC COLOR | Quart
- 1 – HRC06-LV | Catalyst | Half Pint
- 1 – HRR06-LV | Reducer | Half Pint

Hot Rod Clear

2.1 VOC Compliant

Provides the ultimate custom low gloss look on any color when painting accent stripes, hoods or entire vehicles.

- Durable, two-component, matte finish
- Smooth and uniform appearance
- 2.1 VOC compliant
- Convenient kit format



HRC40 | Kit

KIT CONTAINS:

- 1 – HRC04 | Clear | Quart
- 1 – HRC06-LV | Catalyst | Half Pint
- 1 – HRR06-LV | Reducer | Half Pint

Base Colors

Fast covering clean colors that provide maximum color effect for custom paint jobs.

- Superior pigmentation
- Ideal atomization
- Smooth and uniform finish
- Excellent adhesion
- Easy to apply with no recoat issues
- Accepts isocyanate hardener in multi-layer jobs



Quart

- 02014 | Gold
- 02024 | Silver
- 02044 | Bright White
- 02054 | Jet Black
- 02064 | Titanium
- 02094 | Lt Gold
- 02114 | Yellow
- 02154 | Red

Mix Clear

A one-component colorless coating used as a carrier for custom finish concentrates and effect pigments.

- Excellent color holdout
- Can be used as a mid-coat clear to protect artwork
- Transparent for vivid colors
- Minimizes tape tracking
- Fast drying
- Easy to use



- MC011 | Gallon
- MC014 | Quart

Candy Concentrates

A vibrant line of transparent pigments that add spectacular color to custom paint jobs.

- Outstanding depth and clarity
- Brilliant, clean colors
- Easy to apply
- Combine with effect pigments for the ultimate custom look
- Compatible with multiple paint technologies



- 03016 | Winefire | Half Pint
- 03026 | Sun Dance | Half Pint
- 03046 | Aqua Blue | Half Pint
- 03056 | Royal Blue | Half Pint
- 03086 | Mandarin | Half Pint
- 03096 | Mint Green | Half Pint
- 03106 | Passion Purple | Half Pint
- 03116 | Candy Apple Red | Half Pint
- 03126 | California Gold | Half Pint
- 03156 | Magenta | Half Pint

Fluorescent Concentrates

A line of intense, eye-catching colors for creating custom graphics.

- Extra bright colors
- High visual impact
- Compatible with multiple paint technologies



- 03208 | Fireball | Pint
- 03218 | Caliente | Pint
- 03228 | Stop Lite | Pint
- 03238 | Maui Blue | Pint
- 03248 | Mean Green | Pint
- 03258 | Hotter Than Pink | Pint
- 03268 | Marvey Magenta | Pint
- 03278 | Wild Chartreuse | Pint
- 03288 | Sun Spot | Pint

Flakes

Precision cut resin coated chips for adding intense sparkle to custom paint jobs.

- Brilliant, jewel-like colors
- Provides extreme effect
- Fade and solvent resistant
- Easy to apply



- 06014 | Mini Gold | 4 oz.
- 06024 | Mini Silver | 4 oz.
- 06034 | Blue | 4 oz.
- 06044 | Gold | 4 oz.
- 06054 | Red | 4 oz.
- 06064 | Green | 4 oz.
- 06124 | Solar Fire | 4 oz.
- 06144 | Silver Rainbow | 4 oz.
- 06154 | Silver | 4 oz.

Lightning FX

Vibrant glass pearl pigments that provide extra brilliance and sparkle to custom paint jobs.

- Add to color or clear
- Highly reflective
- Adds intense sparkle in sunshine



- 33012 | White Lightning | 2 oz.
- 33022 | Sun Gold | 2 oz.
- 33032 | Hurricane Red | 2 oz.
- 33042 | Ultra Violet | 2 oz.
- 33052 | Thunder Blue | 2 oz.
- 33062 | Electro Green | 2 oz.

Paste Pearls

Concentrated effect pigments that add a mild frosted sparkle effect to custom paint jobs.

- Concentrated for easy mixing
- Highly reflective pigments
- Easy to create one-off colors



- 35202 | Platinum | 2 oz.
- 35212 | Red 2-Tone | 2 oz.
- 35222 | Gold 2-Tone | 2 oz.
- 35232 | Blue 2-Tone | 2 oz.
- 35242 | Green 2-Tone | 2 oz.
- 35252 | Violet 2-Tone | 2 oz.
- 35262 | Orange 2-Tone | 2 oz.
- 35272 | Aztec Gold | 2 oz.

A 70 year heritage.

Best-in-class products for collision centers, restoration shops and DIYers.



AEROSOL FILLING

Increase throughput with shop floor compliant aerosols. Fill one custom aerosol or hundreds with our quick, clean and easy to use filling equipment and aerosol blanks. Limitless color combinations for solvent and waterborne paint systems increase your revenue.



Custom Fill™ Aerosol Blank

Can be filled with a variety of automotive paints using a **Custom Fill Machine**. Custom aerosols are compliant for use by professional shops outside of the booth and give DIY customers professional results.

- No clean up
- Comfort tip eases finger fatigue
- Holds pressure throughout the can
- Shop floor compliant (NESHAP)
- Quick and easy to fill
- Professional spray pattern



61993 | 16 oz. Aerosol

Custom Fill+ High Build Aerosol Blank

Custom Fill+ High Build Aerosol Blanks provide higher film build and quicker coverage for 1K and 2K solvent primers, clear, and color.

- Superior basecoat and single stage hiding
- Shop floor (NESHAP) compliant
- Utilize your preferred primer, basecoat, or clear with your activator to ensure proper mix
- 1K & 2K compatible



62013 | 16 oz. Aerosol

Custom Fill Waterborne Aerosol Blank

Can be filled with **Sure-Coat™** and automotive waterborne basecoat for convenient high quality repairs.

- No clean up
- Comfort tip eases finger fatigue
- Holds pressure throughout the can
- Shop floor compliant (NESHAP)
- Quick and easy to fill
- Professional spray pattern



62003 | 16 oz. Aerosol

Custom Fill Color Coat™ Aerosol Blank

Designed to be filled with **Color Coat** using a **Custom Fill machine**. Custom aerosols provide unlimited colors for refinishing vinyl and plastic or touching up carpet and velour.

- No clean up
- Comfort tip eases finger fatigue
- Holds pressure throughout the can
- Shop floor compliant (NESHAP)
- Quick and easy to fill
- Professional spray pattern



61983 | 16 oz. Aerosol

Custom Fill Pneumatic Machine

A pneumatic filler to fill custom aerosols.

Width: 5.25" Height: 15"

Accessories:

70704 | Wall Bracket

70706 | Cylinder

70701 | Pneumatic Machine



Custom Fill Manual Machine

A hand operated aerosol filler to fill custom aerosols.

Width: 5.25"
Height: 22" including handle

70801 | Manual Machine



Multi-Coat™ Aerosol Blank

Improved Aerosol

An aerosol blank for filling enamels, urethanes, and other paints.

- Create customer specific aerosols
- Ideal for industrial applications
- Compliant for use on shop floor
- Use with Omni or Fillon machines
- Economical



61003 | 16 oz. Aerosol

Universal Color Coat™ Aerosol Blank

Improved Aerosol

A blank aerosol for filling custom Color Coat colors.

- Ideal solvent blend for Color Coat
- Use with Omni or Fillon machines
- Professional spray pattern



15993 | 16 oz. Aerosol

Custom Fill™ Wide Fan Tip

WTIP25 | Wide Fan Tip – 25 Pack

Replaces tip on Custom Fill Aerosol Blank (61993). May also be used on Custom Fill+ High Build (62013).



Custom Fill Medium Fan Tip

MTIP25 | Medium Fan Tip – 25 Pack

Replaces tip on Custom Fill+ High Build (62013). May also be used on Custom Fill Aerosol Blank (61993).



ADHESION PROMOTERS

Eliminate costly rework from paint not sticking to plastic or other difficult substrates. Simple to use, SEM adhesion promoters make painting substrates quick and easy.



XXX Adhesion Promoter

Increases adhesion of top coat materials to surfaces such as plastics, aluminum, steel, glass, chrome and previously painted surfaces.

- Superior bonding properties
- Top coat with most refinish products
- Excellent on olefin based plastics
- Easy to apply
- 3 convenient sizes



77721 | Gallon
77723 | 16 oz. Aerosol
77724 | Cone Quart

Sand Free Adhesion Promoter

A unique wet-on-wet adhesion promoter for ABS, PVC and similar plastics.

- Wet-on-wet application melts color into substrate
- Perfect for interior plastic parts
- Easy to use



38363 | 16 oz. Aerosol
38364 | Cone Quart

Plastic Adhesion Promoter

Increases adhesion of top coat materials to a wide variety of raw plastics.

- Superior bonding properties
- Topcoat with most refinish products
- Excellent on olefin based plastics
- Easy to apply
- 3 convenient sizes



39861 | Gallon
39863 | 20 oz. Aerosol
39864 | Cone Quart

GENERAL PURPOSE AEROSOLS

MultiMax™

A multi-purpose aerosol enamel for exterior or interior use on metal, wood, fiberglass and rigid plastic.

- Outstanding coverage
- Excellent filling properties
- Durable, fast drying finish
- Great adhesion
- Professional finish



16 oz. Aerosol

61013 | Flat Black
61023 | Semi-Gloss Black
61033 | Gloss Black
61043 | Aluminum
61073 | Clear
61083 | Red Oxide Primer
61093 | Gloss White
61103 | Gray Primer
61113 | Chassis Gray

PAINT STRIPPERS

XXX Bumper Stripper

An aerosol material designed to safely remove refinish materials from flexible parts.

- Won't swell or attack substrate
- Safe for most bumpers
- Non-sag formula



77713 | 16 oz. Aerosol

Urethane Bumper Stripper

Safely removes refinish materials from flexible parts.

- Won't swell or attack substrate
- Safe for most bumpers including urethane pieces
- Non-sag formula



39913 | 20 oz. Aerosol

UV CURED CLEAR

Solaray™ UV Clearcoat

A UV cross-linked coating for restoring headlights and refinishing wheels and accessories.

- Long lasting OEM replacement material
- Cures fast to a hard high gloss finish
- Superior durability
- Shop floor compliant (NESHAP)
- Use on wheels, small parts and accessories



21013 | 12 oz. Aerosol

POWER STATION™

Easily mix and fill your preferred primers, basecoats and clears into aerosols on the shop floor.



Power Station Solvent Based

70901SB | Solvent Based

Optional With Initial Purchase

70902S | Solvent Based Refill

Power Station Waterborne

70901WB | Waterborne

Optional With Initial Purchase

70902W | Waterborne Refill

- Fill your preferred basecoat, primer, or clear with recommended activator ensuring proper mix
- Reduce labor up to 85% through time savings and less steps
- Eliminate waste from costly cups, gun cleaning, and hazardous waste
- Extend pot life of mixed products
- Rationalize SKUs needed for filling
- Free up paint team for larger jobs
- Compliant for shop floor application (NESHAP 6H)
- Compact, mobile design provides easy integration



Included In Both 70901SB and 70901WB

70701 Custom Fill™ Pneumatic Machine*	Qty: 1	38253 Premium Powder Guide Coat	Qty: 1
70900 Power Station Rack*	Qty: 1	39103 Bumper Coater™ Flexible Black	Qty: 1
19013 Factory Pack™ - Silver Frost	Qty: 1	39163 Bumper Coater - Med Smoke	Qty: 1
19023 Factory Pack - White	Qty: 1	39143 Trim Black	Qty: 2
19033 Factory Pack - Dk Shadow Grey	Qty: 1	39683 Self Etching Primer - Gray	Qty: 2
19043 Factory Pack - Redfire Pearl	Qty: 1	39803 Clear Chip Guard	Qty: 1
19053 Factory Pack - Torreador Red Met	Qty: 1	39853 Texture Coating	Qty: 1
19063 Factory Pack - Pueblo Gold	Qty: 1	40523 Low VOC Rubberized Undercoating	Qty: 1
19073 Factory Pack - Vermillion	Qty: 1	40903 1K HS Clear	Qty: 2
19083 Factory Pack - Dk Blue Pearl	Qty: 1	40913 1K HS Semi-Gloss Clear	Qty: 2
19093 Factory Pack - Silver Metallic	Qty: 1	41023 Trim Black Euro Jet - Satin	Qty: 1
19103 Factory Pack - Black	Qty: 1	42013 High-Build Primer Surfacer - Gray	Qty: 2
19163 Factory Pack - Alabaster Silver	Qty: 1	45504 Rust Trap™ - Black	Qty: 1
19193 Factory Pack - Polished Gray Met.	Qty: 1	62213 Ez Coat™ - Black	Qty: 1
19203 Factory Pack - Milano Red	Qty: 1	62223 Ez Coat - Olive Green	Qty: 1
19223 Factory Pack - Taffeta White	Qty: 1	62233 Ez Coat - Light Green	Qty: 1
19263 Factory Pack - Lunar Mist Met	Qty: 1	62243 Ez Coat - Gray	Qty: 1
19283 Factory Pack - Super White	Qty: 1	62253 Ez Coat - Tan	Qty: 1
19293 Factory Pack - Black	Qty: 1	62263 Ez Coat - Olive Brown	Qty: 1
19353 Factory Pack - Red Pearl	Qty: 1	62273 Ez Coat - White	Qty: 1
19363 Factory Pack - Magnetic Gray Pearl	Qty: 1	62283 Ez Coat - Field Drab	Qty: 1
19373 Factory Pack - White	Qty: 1	62293 Ez Coat - Dark Green	Qty: 1
19393 Factory Pack - Victory Red	Qty: 1	77723 XXX Adhesion Promoter	Qty: 1
19403 Factory Pack - Olympic White	Qty: 1	77774 XXX Universal Surface Cleaner	Qty: 1
19423 Factory Pack - Black	Qty: 1	MTIP25 Custom Fill Medium Fan Tip	Qty: 25
19443 Factory Pack - Galaxy Silver Met.	Qty: 1	WTIP25 Custom Fill Wide Fan Tip	Qty: 25

*Only available with limited use agreement

Included In 70901SB Only

61993 Custom Fill Aerosol Blank - Solvent	Qty: 36
62013 Custom Fill+ High Build Aerosol Blank	Qty: 36

Included In 70901WB Only

61993 Custom Fill Aerosol Blank - Solvent	Qty: 24
62003 Custom Fill Waterborne Aerosol Blank	Qty: 24
62013 Custom Fill+ High Build Aerosol Blank	Qty: 24

See how the Power Station works on the next page

REDUCE REPAIR TIME, STEPS AND WASTE WITH THE POWER STATION

NOW YOU CAN FILL AEROSOL BLANKS WITH YOUR PREFERRED 2K PRIMER, BASECOAT, OR CLEAR AND SPRAY WHILE ON THE SHOP FLOOR

- 1 Choose the correct **Custom Fill Aerosol Blank** to suit your coating. Mix **your** preferred 2K coating and activator.



- 2 Place the **Custom Fill™** cap in the Fill Cylinder and fill your pre-mixed coating for quick and easy refinishing on the shop floor.



TURN MORE CARS WITH THE POWER STATION AND CUSTOM FILL AEROSOLS

- Reduces labor up to 85% through time savings and less steps
- Eliminates costly cups, gun cleaning, and hazardous waste
- Extends pot life of mixed products
- Frees up paint team for larger jobs

UNDERCOATINGS

SEM undercoatings eliminate headaches caused by poor performance of low quality products. Our rubberized products offer industry leading color and texture without bleed through. Our asphalt-based products give fantastic coverage and dry times at an economic price.



Rubberized Undercoating

A premium, single component, paintable, textured coating for sound dampening, chip resistance, rust protection and corrosion protection.

- Uniform final appearance
- Quality asphalt-free formula
- Paintable without bleed through
- Sound-deadening properties
- Aerosol includes straw for tight spots
- Fast-drying
- Chip and corrosion resistant



39513 | White (EU Only) | 24 oz. Aerosol
39523 | Black | 24 oz. Aerosol

Low VOC Rubberized Undercoating

VOC Compliant

A premium paintable textured coatings for areas needing sound deadening, chip resistance and corrosion protection.

- Uniform final appearance
- Quality asphalt-free formula
- Paintable without bleed through
- Sound-dampening properties
- Aerosol includes straw for tight spots
- Fast-drying
- Chip and corrosion resistant



40523 | Black | 24 oz. Aerosol
40524 | Black | Quart

Apply with the **Rock-It Liner™ Gun** or **Premium Undercoat Applicator** on page 42.

Undercoating

A non-paintable, asphalt-based aerosol coating for corrosion protection, chip resistance and sound deadening on automotive frames, wheel wells and undercarriage areas.

- Uniform appearance
- Excellent adhesion
- Economical



39463 | Black | 24 oz. Aerosol

Low VOC Undercoating

VOC Compliant

An asphalt-based, aerosol coating for corrosion protection, chip resistance and sound deadening on frames, wheel wells and undercarriage areas.

- Uniform appearance
- Excellent adhesion
- Economical



40463 | Black | 24 oz. Aerosol

Apply with the **Rock-It Liner™ Gun** or **Premium Undercoat Applicator** on page 42.

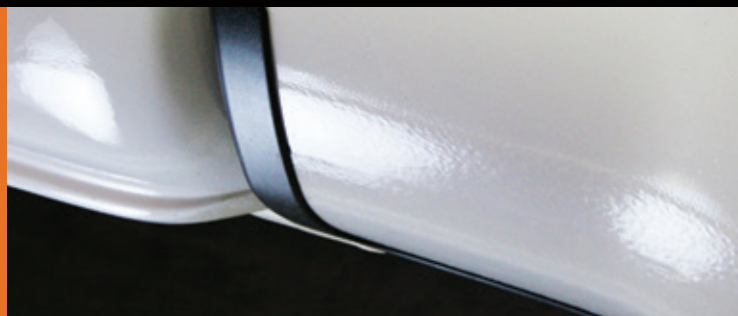


Intelligent Product Design.
Reduce repair time, steps and waste.

It's the way we work. It's the way we think.

CHIP GUARDS

SEM has the top products for restoring OEM chip resistance and corrosion protection to lower body panels. From fine to heavy textured coatings, SEM has a chip guard that is right for the job.



Pro-Tex™ 2K Chip Guard

A two-component, urethane, textured coating for the ultimate protection of lower panels prone to chipping and corrosion.

- Tintable and paintable
- Duplicate all OEM textures
- Topcoat with solvent or waterborne systems
- Best in class protection
- Excellent gloss retention
- No special equipment needed



40820 | Kit

KIT CONTAINS:

- 1 – 40824 | Chip Guard | Quart
- 2 – 40836 | Catalyst | Half Pint

Heavy Texture Chip Guard

An aerosol coating that matches medium to heavy OEM textures and protects lower panels from impact, chipping and abrasion.

- Excellent chip and impact protection
- Duplicate a variety of factory textures
- Simple aerosol application
- Medium to coarse texture
- Dries fast



39793 | Opaque | 20 oz. Aerosol

Satin Black Chip Guard

A durable, acrylic coating that matches light to medium OEM textures and protects lower panels from impact, chipping and abrasion.

- Excellent chip and impact protection
- Duplicate a variety of factory textures
- Available in aerosol and a ready to spray quart



39813 | 20 oz. Aerosol
39814 | Quart

Clear Chip Guard

A durable, acrylic coating that matches light to medium OEM textures and protects lower panels from impact, chipping, and abrasion.

- Excellent chip and impact protection
- Duplicate a variety of factory textures
- Available in aerosol and a ready to spray quart
- Dries fast



39803 | 20 oz. Aerosol
39804 | Cone Quart

COATING EQUIPMENT

SEM has the top products for restoring OEM appearance and protection.

Pro-Tex Truckbed Liner Gun

A siphon feed spray gun used to apply **Pro-Tex** liners.

- 0.5" pick up tube required for **Pro-Tex**
- Adjustable pattern

71001 | Applicator

Premium Undercoat Applicator

A siphon feed heavy plastic applicator for spraying bed liners, undercoatings, and rust proofing.

71109 | Applicator

See page 42 for complete details.

Rock-It Liner™ Gun

A low cost, cast aluminum siphon gun for spraying bulk undercoatings and **Rock-It Liner**.

71102 | Applicator

See page 42 for complete details.

TRUCKBED LINERS

SEM offers three sprayable urethane bed liners with various advantages in protection and cosmetic appearance. Available in black and tintable versions, SEM bed liners will not chalk, fade or peel after proper application.



Rock-It Liner™

Improved Formula

A high quality, urethane, textured coating that provides a durable protective finish for truckbeds and restoration projects.

- Excellent sound dampening
- Outstanding adhesion
- Superior fade resistance
- Chemical and corrosion resistant
- Free applicator gun included in every kit



42250 | Black | Kit

KIT CONTAINS:

- 4 – 42254 | Black | Quart
- 1 – 42244 | Catalyst | Cone Quart
- 1 – 71102 | Rock-It Liner Gun
- 1 – Mixing Cup

SOLD SEPARATELY:

- 42254 | Black | Quart
- 42255 | Black | 5 Gallon **New**
- 4225-DR | Black | 54 Gallon **New**
- 42246 | Catalyst | Half Pint
- 42244 | Catalyst | Cone Quart **New**

IMPROVED:

- DURABILITY
- GLOSS
- TEXTURE



42260 | Tintable | Kit

KIT CONTAINS:

- 4 – 42264 | Tintable | Quart
- 1 – 42244 | Catalyst | Cone Quart
- 1 – 71102 | Rock-It Liner Gun
- 1 – Mixing Cup

SOLD SEPARATELY:

- 42264 | Tintable | Quart
- 42265 | Tintable | 5 Gallon **New**
- 4226-DR | Tintable | 54 Gallon **New**
- 42246 | Catalyst | Half Pint
- 42244 | Catalyst | Cone Quart **New**

Professional Truckbed Liner

A two-component, urethane, textured coating that provides superior adhesion, film build and flexibility to truckbeds and restoration projects.

Apply with the **Premium Undercoat Applicator** on page 42.

- Durable, slip resistant, non-corrosive coating
- Outstanding adhesion and chemical resistance
- Will not fade
- Bonds to most surfaces
- Tintable version to match OEM colors
- Sound dampening properties
- Air and water tight



39630 | Black | Kit
39650 | Tintable | Kit

KIT CONTAINS:

- 1 – 39631 | Black | Gallon OR
- 1 – 39651 | Tintable | Gallon AND
- 1 – 39634 | Catalyst | Quart
- 2 – 71004 | Plastic Schutz Bottle
- 1 – Mixing Cup

ROCK-IT LINER

PROTECTION. TEXTURE. DURABILITY.



BENEFITS	ROCK-IT LINER™	LEADING COMPETITORS
MANUFACTURED IN THE USA	✓	✗
GUN INCLUDED IN KIT	✓	✗
COVERAGE	✓ 150 SQ. FT.	✗ 125 SQ. FT.
FLASH TIME	✓ 15 MIN	✗ 60 MIN
LIGHT DUTY SERVICE TIME	✓ 2 DAYS	✗ 2 – 3 DAYS
REGULAR DUTY SERVICE TIME	✓ 5 DAYS	✗ 5 – 7 DAYS
SOUND DAMPENING	✓	✓
SOLVENT RESISTANT	✓	✓

Pro-Tex™ Truckbed Liner

Lifetime Warranty

A professional, two-component, urethane liner system that provides a hard, durable finish and superior protection to truckbeds and equipment.

- Tough, durable and non-corrosive
- Air and water tight
- Tintable version to match OEM colors
- Outstanding chemical resistance
- Bonds to most surfaces
- Resists fading
- Excellent sound dampening
- No maintenance

Apply with the **Pro-Tex Truckbed Liner Gun** or **Premium Undercoat Applicator** on page 37, 42.



40640 | Black | Kit

KIT CONTAINS:

- 1 – 40641 | Black | Gallon
- 2 – 40674 | Catalyst | Quart
- 2 – 71004 | Plastic Schutz Bottle
- 2 – Mixing Cups

SOLD SEPARATELY:

- 40645 | Black | 5 Gallon
- 4064-DR | Black | 54 Gallon **New**
- 40671 | Catalyst | Gallon



40660 | Tintable | Kit

KIT CONTAINS:

- 1 – 40661 | Tintable | Gallon
- 2 – 40674 | Catalyst | Quart
- 2 – 71004 | Plastic Schutz Bottle
- 2 – Mixing Cups

SOLD SEPARATELY:

- 40665 | Tintable | 5 Gallon
- 4066-DR | Tintable | 54 Gallon **New**
- 40671 | Catalyst | Gallon

Pro-Tex Extender

An additive to lengthen the pot life of Pro-Tex Truckbed Liners.

40688 | Pint



Plastic Schutz Bottle

A black HDPE plastic bottle for applying undercoatings and liner systems.

71004 | 1 each

See page 42 for attachable applicators.



BUILT BETTER™

For race day...and every day.

For race day.

Furniture Row Racing and 28 other professional auto racing teams trust SEM Products.

Every day.

Collision centers, restoration shops, and DIYers trust SEM's OEM recommended products to reduce repair time, steps and waste in every application.



Furniture Row trademarks used with permission.
Toyota trademarks used with permission.

©CIA Stock Photo

RUST PREVENTION

Restoring OEM corrosion protection is critical to a lasting repair. These products provide OEM quality corrosion protection while improving repair process efficiencies.



Rust Preventer Cavity Wax

A semi-transparent black internal panel compound to restore OEM corrosion protection on inner body panels and cavities.

- Non-hardening
- Sprayable in 360° pattern
- Superior adhesion
- Excellent corrosion protection
- Superior wicking



39573 | 24 oz. Aerosol
39574 | Quart

Copperweld™



An aerosol weld-through primer for superior corrosion protection between welded substrates.

40783 | 20 oz. Aerosol

See page 19 for complete details.

Brushable Copperweld™

A weld-through primer for superior corrosion protection between welded substrates.

40786 | 8 oz. can

See page 19 for complete details.

Weld-Thru Primer

A zinc-enriched coating that provides corrosion protection between welded substrates while minimizing distortion and welding splatter.

39783 | 16 oz. Aerosol

See page 19 for complete details.

Premium Undercoat Applicator and Wand

A siphon feed heavy plastic applicator for spraying bed liners, undercoatings, and rust proofing.

71110 | Applicator and 1 Spray Wand

See page 42 for complete details.

RUST CONVERTERS & SEALERS

Removing rust can damage your substrate. With SEM rust products, stop oxidation and prevent further damage or convert existing rust to a paintable surface. Never let rust stop you from completing your repair.



Rust Mort™

An acidic compound that removes or converts rust to an insoluble coating prior to applying body filler, primer or top coat.

- Completely removes light rust
- Converts heavy rust into a stable, workable substrate
- Creates ideal surface for filler or primer
- Ready to apply
- Requires minimal surface prep



69501 | Gallon
69504 | Quart
69508 | Pint

Rust Seal™

A dual-purpose acidic compound that neutralizes mild rust and provides a temporary rust-protective layer prior to top coating.

- Neutralizes mild rust
- Remains on surface for short-term rust prevention
- Must be topcoated to prevent new rust
- Apply with brush or roller
- Apply to damp or dry rusted surfaces
- Can be sanded for body filler or top coat



39304 | Quart
39308 | Pint

RUST COATINGS

Make difficult refinish projects quick and easy by painting directly to rust and bare steel at the same time. Whether a small job at home or a large piece of industrial equipment, SEM rust products transform old and rusty items.



Rust Trap™

A high gloss, moisture-cured urethane coating for restoring and protecting rusty metal.

- Premium moisture-cured urethane technology
- Paint directly to rust or bare sanded steel
- No conversion products needed
- Wet-on-wet application for faster repairs
- Compliant everywhere
- Flattener available
- Can be topcoated



- 45501 | Black | Gallon
- 45504 | Black | Cone Quart
- 45508 | Black | Pint
- 45514 | Silver | Cone Quart
- 45518 | Silver | Pint
- 45594 | Flattener | Cone Quart
- 45598 | Flattener | Pint
- 79460 | Counter Assortment | Kit

Rust Shield™

2.8 VOC Compliant

A direct to metal coating that isolates and controls oxidation, rust, and corrosion on metal substrates.

- Paint directly to rust or bare sanded steel
- Fast application
- Compliant everywhere
- Enhancer available for gloss adjustment
- Can be topcoated
- Restore agriculture, industrial and heavy equipment



Rust Shield Hardener and Gloss Enhancer

A catalyst for use with **Rust Shield**.

- Adds gloss and durability
- Easy 8:1 mixing ratio
- Eliminates recoat headaches
- Aids in curing in cooler conditions

- 38008 | Pint



Gallons

- 28061 | Gloss Black
- 28081 | Safety Orange
- 28091 | Flat Black
- 28101 | Black
- 28111 | White
- 28131 | I. H. Red
- 28141 | Cat Yellow
- 28151 | F.M.F. Gray
- 28161 | John Deere Yellow
- 28181 | John Deere Green
- 28191 | Aluminum

Quarts

- 28064 | Gloss Black
- 28104 | Black

Use Rust Trap™ to permanently stop rust and corrosion prior to topcoating or as a stand alone coating.

FEATURES	RUST TRAP™	LEADING COMPETITORS
NO METAL PREP REQUIRED	✓	✗
QUICK FLASH TIME	✓ 5 – 15 MIN SPRAY 20 – 60 MIN BRUSH	✗ 2 – 6 HRS
MULTIPLE USE PACKAGING	✓	✗
APPLY DIRECT TO BARE STEEL	✓	✗
ADJUSTABLE GLOSS	✓	✗

RUST TRAP™

PROTECTIVE COATING SYSTEM

CORROSION CONTAINMENT COATING

RUST EQUIPMENT

With applicators and accessories for applying rust and corrosion coatings, preventers, and converters, SEM offers the equipment to get the job done right.



Premium Undercoat Applicator

A siphon feed heavy plastic applicator for spraying bed liners, undercoatings, and rust proofing.

- Adjustable pattern
- Easy to clean
- 0.5" pick up tube



71109 | Applicator
71110 | Applicator and 1 Spray Wand

Spray Wand

A 28" plastic wand with a 360° tip that sprays undercoating and rust proofing behind body panels.

- 360° spray pattern
- 28" length ensures full coverage

71111 | Spray Wand



Rust Preventer Aero Wand

A rust preventer aerosol wand with a 24" length that sprays a 360° pattern for applying **Rust Preventer Cavity Wax**.

- 360° spray pattern

71120 | Aero Wand



Rock-It Liner™ Gun

A low cost, cast aluminum siphon gun for spraying bulk undercoatings and **Rock-It Liner™**.

- Sprays a variety of products including undercoatings, truckbed liners and chip guards
- Simple operation
- Low cost



71102 | Applicator

Rust & Corrosion Product Selection Guide

Rust Products	Converts Rust	Corrosion Protection	Apply To Rust	Apply To Prepped Metal	Substrate Must Be Topcoated	Can Be Topcoated	Sound Deadening
Rust Mort™	✓		✓		✓		
Rust Seal™	✓		✓		✓		
Rust Trap™		✓	✓	✓		✓	
Rust Shield™		✓	✓	✓		✓	
Rust Preventer Cavity Wax		✓		✓			
Rubberized Undercoating		✓		✓		✓	✓
Undercoating		✓		✓			✓



70080 SHOP CABINET



Width: 25" | Height: 30" | Depth: 13"

Updated Look and Product Mix

AVAILABLE FALL 2017

SEM's **70080 Shop Cabinet Assortment** is a comprehensive system of 23 products a technician needs every day for panel bonding, plastic repair, seam sealing, sound dampening, and corrosion protection. The product assortment is delivered with a locking, steel welded cabinet for added protection and organization.

- 23 product assortment of SEM's most popular collision center products
- Includes two-component **71119 Universal Manual Applicator**
- Durable, steel welded construction
- All included **Dual-Mix™** products are OEM recommended and forever warranted



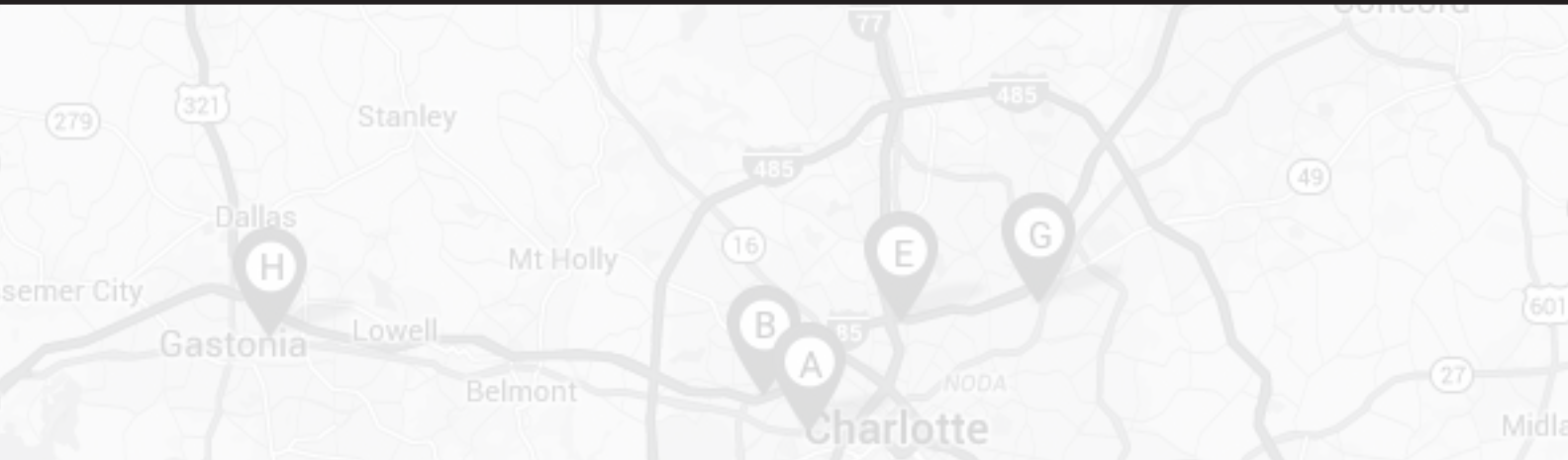
SHOP CABINET INCLUDES 1 EACH OF THE FOLLOWING PRODUCTS:

Part No. Product

38373	SEM Solve
38398	Scuff & Clean
★ 39377	Dual-Mix™ Seam Sealer
★ 39573	Rust Preventer Cavity Wax
39592	Metal Bite™ Finishing Glaze
39683	Self Etching Primer - Gray
★ 39747	Dual-Mix Multi-Purpose Panel Adhesive
★ 39777	Dual-Mix High-Build Self Leveling Seam Sealer
★ 39847	Dual-Mix Multi-Plastic Repair Material
★ 39977	Dual-Mix Panel Vibration Control Material
★ 40477	Dual-Mix Heavy Bodied White Seam Sealer
40482	Bumper Bite™ Flexible Glaze

★ 40507	Dual-Mix Quick Set 50
★ 40523	Low VOC Rubberized Undercoating
★ 40783	Copperweld™ Primer
42013	High-Build Primer Surfacer - Gray
★ 62223	Ez Coat™ - Olive Green
70007	Plastic Repair Contouring Tape
70070	Versa-Tip (6 Pack)
71119	Universal Manual Applicator
71120	Rust Preventer Aero Wand
77723	XXX Adhesion Promoter
77763	XXX Universal Gun Cleaner

★ = OEM RECOMMENDED



CABINETS, RACKS & DISPLAYS

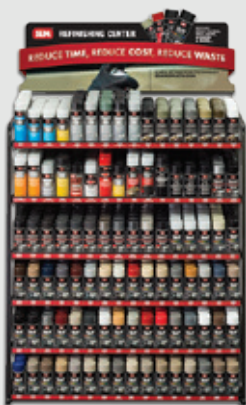
SEM assortments offer selections of our most popular products. They act as silent salesmen and promote SEM's commitment to quality while improving store appearance.



Refinishing Center

A jobber's best selling, lowest paid salesperson. Attract more customers and generate additional revenue with SEM's Refinishing Center of professional aerosols.

40032 | 1 Rack



SEM Shop Cabinet

An assortment including 23 of SEM's most popular body shop products.

70080 | 1 Cabinet

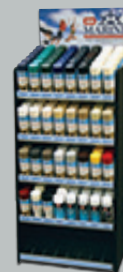
See page 43 for complete details.



Marine Rack Assortment

An assortment of Vinyl Coat and other SEM Marine prep products.

M25992 | 1 Rack



Classic Rack Assortment

An assortment of all Classic Coat™ colors and necessary prep materials.

17002 | 1 Rack



Marine Vinyl Coat™ 12 Can Assortment

Assortments of the top selling Marine Vinyl Coat aerosols.

M25889 | 12 Can Assortment



Marine Vinyl Coat™ 30 Can Assortment

Contains 2 each of our most popular Vinyl Coat colors and 1 each of the other 20 colors.

M25779 | 30 Can Assortment



OEM Refinishing System™ Center

A convenient steel cabinet packed with the aerosol products collision centers need to reduce labor up to 85% when refinishing support parts, cut-ins, and jambes. The included assortment of Factory Pack™ basecoat covers 18 of the top 20 colors used in collision centers.

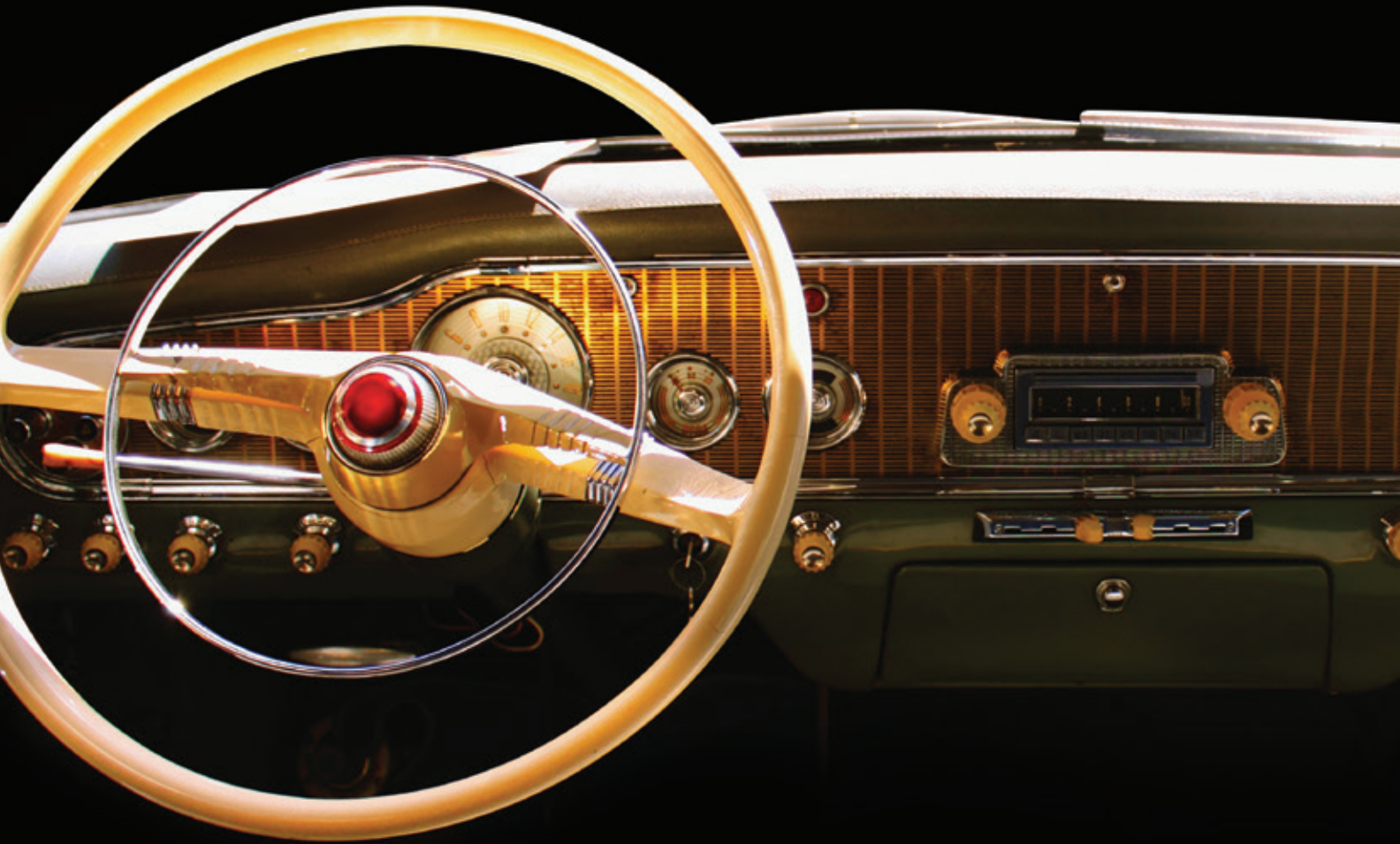
79130 | OEM Refinishing Cabinet



- Includes:
- 13 popular Factory Pack™ colors (1 each)
- 7 Ez Coat™ assortment (1 each)
- 2 1K HS Semi-Gloss Clear
- 1 1K HS Gloss Clear
- 1 SEM Solve



Driving innovation for 70 years.



A 70 Year Heritage.

We are an employee owned company. We relentlessly pursue excellence.
We innovate and we improve. **We are American manufacturing.**



Accept no compromises, choose only quality RV maintenance.