

How to Install Aerocatch Hood Pins on Your Seibon Carbon Hood

Important: professional installation by an experienced carbon fiber/fiberglass expert is STRONGLY recommended. Installation may require specialty tools and equipment. The following is only a guideline to an installation (not all installations are the same). These guidelines should NOT be used as an alternative to a professional installation.

Safety first. For your protection, wear a mask and goggles.

Working with fiberglass and carbon fiber material may cause an allergic skin reaction. We recommend wearing a long sleeve shirt and pants when performing the installation.

Tools recommended: drill, drill bit, dremel, dremel bit, wrench, painter's tape (a.k.a. "blue tape"), screwdriver, small sanding drum, ruler, Aerocatch hood pins, hacksaw, chalk or liquid whiteout, and a couple of small files (drill bit sizes vary.)

For safety precautions, we recommend having at least one other person help with the installation.



Note: Hood pin location and angle is up to you. However, be sure it is installed in a secure area within the car's frame.

Additionally, we suggest covering the engine bay to prevent it from getting dirty during the installation. Make sure that the engine is cold before placing any type of cover on the engine bay.



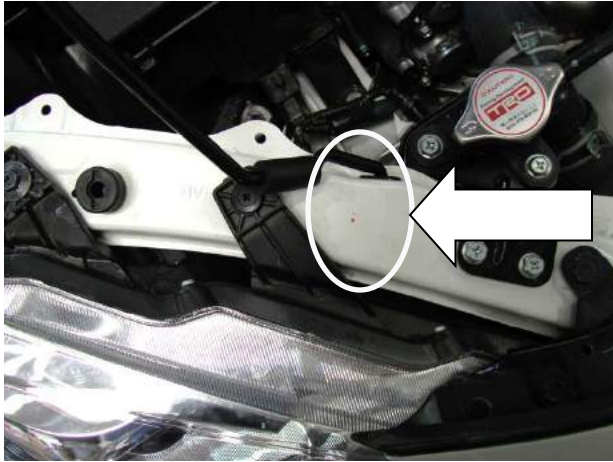
Step 1: With the hood in a closed position, make sure that everything aligns. Open your Seibon Carbon hood. Locate a spot on the frame where the pin will not disturb the engine bay. (Note: avoid installing on any of the hood's body lines.) We used a center clip as a guide for a pin. From the center clip we measured and marked at 2 inches on each side (measurements vary by vehicle). We again verified that this did not fall on any of the hood's body lines.



Measuring with a ruler.



Marking a dot with a Sharpie.

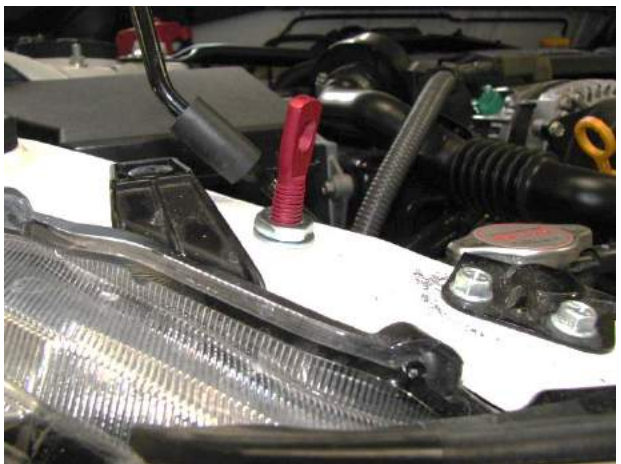


Dot clearly marked on frame.

Step 2: Begin by drilling a hole on the mark you made. For your safety, be sure to wear your goggles and mask.



Step 3: Install the nut and washer on the pin and proceed to screw the pin in.



Step 4: Carefully close the hood to verify that the height of the pin is correct. You may need to lower/cut the pin.

Reopen the hood. Mark the top of the pin with either chalk or liquid whiteout. Next, lower the hood to touch the pin so that the whiteout on the pin makes a mark on the bottom of the hood to tell you where to drill. Look carefully. The mark is very small.



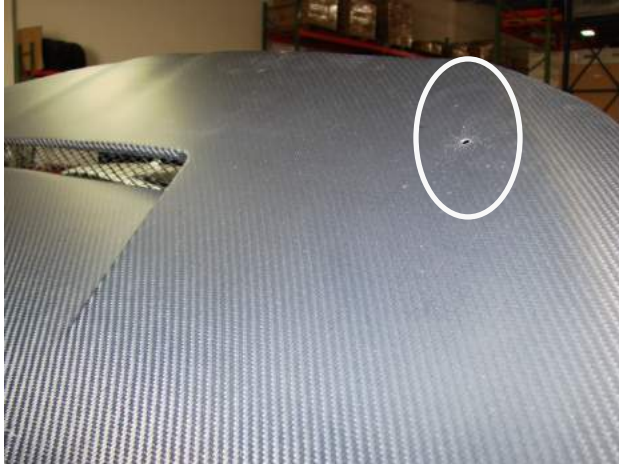
Step 5: Enlarge/drill on the mark. Do not drill through the surface layer of the hood yet. Drill only through the “inside” layer of the hood. Smooth out the hole’s edges.

In our case, the mark was close to an existing hole. So for this round, we simply made the existing hole bigger.



Step 6: Reapply chalk or liquid white out on the pin. Carefully lower the hood to touch the pin again so that the pin marks the inside of the hole you made in step 5. Proceed to carefully drill through the hood where the mark was made. Close hood to verify that the pin fits through the hole.





Step 7: At this point, you will need to cut the Aerocatch stencil out. Place the stencil and the actual Aerocatch on the hood so that you get an idea of what the finished product will look like. Use painter's tape to keep the stencil in place.

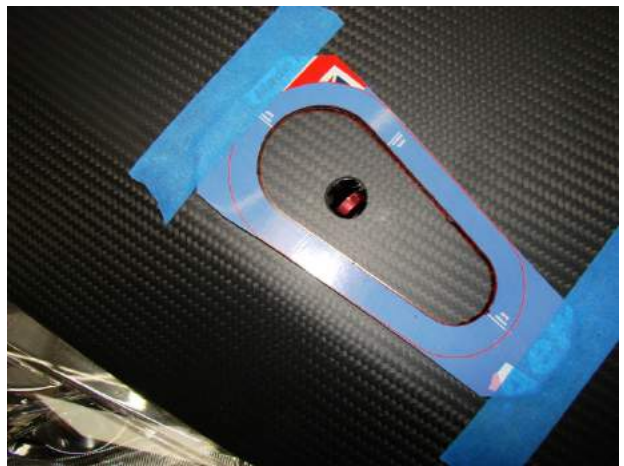
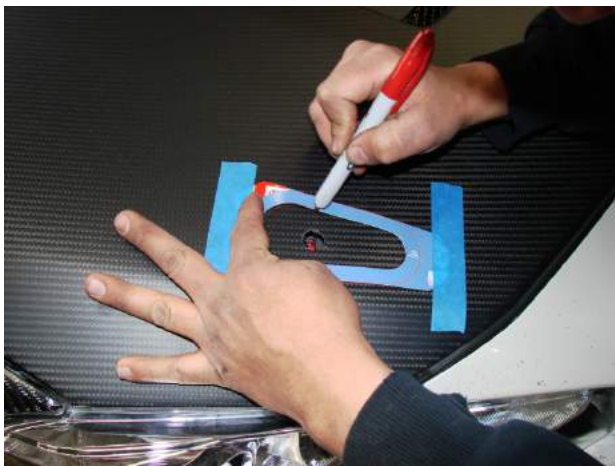




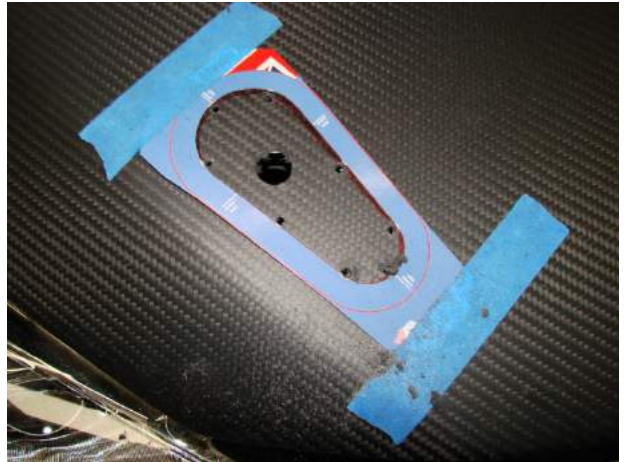
Step 8: Measure the distance from the “crosshairs” to a few reference points such as the end of the hood and hood lines, etc. Be sure to do this for both sides to ensure even spacing.



Step 9: Use a marker to outline the inside of the stencil.



Step 10: Place something sturdy underneath the hood so that you do not damage any part of the frame while cutting/drilling. Proceed to make a few small guide holes along the stencil line.



Step 11: With the help of the guide holes you made in Step 10, cut all around the stencil. Note: do not cut through the hood. You are only cutting the “top” layer of the hood. Remove stencil and tape. Smooth out the edges using dremel, a file, or sandpaper.



Step 12: Make a hole on the inside of the hood, which should be about the same size as the hole made in step 11. Remember, you can enlarge a small hole but you can't make a large hole smaller. So be sure to start out small. Smooth out the hole's edges.



Step 13: Carefully close the hood and place the Aerocatch onto the hood. Drill small holes for the screws. Reopen the hood.



Step 14: Simultaneously install the screws, washers, and nuts that are supplied with the Aerocatch hood pins. The screws should be installed on the outside of the hood. The washers and nuts should be installed on the inside of the hood. (Note: A magnet pen makes it easy to hold nut and washer in place.) Be sure to cover your engine bay to prevent any screws, nuts, or washers from falling into the engine bay.



Step 15: Place rubber stopper on the pins (these are included with your Aerocatch hood pins) (Note: you may need to cut the stopper so that it is not too long.) This is to help prevent the hood from closing past a certain point and from rattling.

Carefully close the hood and lock the hood pin to ensure that the pin and Aerocatch interlock.



Step 16: Installation is now complete.

