



Driven Beyond Perfection

Corso Feroce 6 Bolt Steering Wheels

APPLICATION: 1965-67 Ford Mustang

SIMS-3511-P-6; SIMS-3623-A-6; SIMS-3600-BK-6

Before installing the Corso Feroce 6 bolt steering wheel, please read through the installation procedure and verify that all parts are present, including the supplied hardware.

WARNING! If any part of this installation seems beyond your level of installation experience, please seek the help of a certified professional.

NOTE: all 1965-66 and 1967 Non-Tilt Columns are adjustable. It may be required to slide column up or down slightly for proper horn contact with hub adapter. If spring loaded contacts on the Turn Signal Switch are not rubbing the copper plate on bottom side of the Hub Adapter the horn will not work. If there is too much pressure on the contacts it will premature wear out both contacts and copper plate. To adjust the column simply loosen the two 1/2" nuts that secure column to the bottom of the dash adjust accordingly and tighten nuts.

Only for SIMS adapters both 9 and 6 hole.

ITEMS REQUIRED

- SIMS-3511-P-6 (1965-1967 Billet adapter for 6 bolt wheel)
- SIMS-3623-A-6 (Corso Feroce horn button for 6 bolt wheel)
- Corso Feroce 6 bolt Steering Wheel
- 15/16" socket
- 1/8" allen wrench

INSTALLATION:

Step 1:

Remove existing steering wheel and horn button.

Step 2:

Slide SIMS-3511-P-6 billet adapter over splines on steering shaft.
(See Figure 1)

Step 3:

Attach with steering wheel retaining nut using 15/16" socket.

Step 4:

Remove the horn button wire connection assembly from SIMS-3623-A-6.
(See Figure 2)

Step 5:

Attach horn button wire connection assembly to the wires of SIMS-3511-P-6.
(See Figure 3)

Step 6:

Once the wires are connected insert the assembly into the billet adapter.
(See Figure 4)



Figure 1



Figure 2

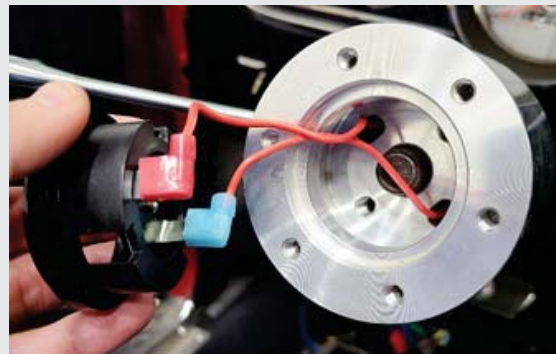


Figure 3



Figure 4

Step 7:

Repeat this process for the other side.

Step 8:

Attach the Corso Feroce 6 bolt steering wheel to the billet adapter. The internal diameter of the steering wheel will seat around the horn button wire connection assembly. (See Figure 5)

Step 9:

Tighten down the supplied hardware with a 1/8" allen wrench. (See Figure 6)

Step 10:

Install the horn button spring, spring hat and horn button in the order shown in Figure 6. (See Figure 7)

Step 11:

The spring hat will nest into the back of the horn button, the smaller diameter of the spring will slide over the spring hat. Align the three prongs on the horn button with the three receptacles on the horn button wire connection assembly and snap into place. (See Figure 8)

Step 12:

The final step is to attach the horn button cover to the horn button. If you have purchased an optional emblem now would be the time to install that. Remove the paper covering the adhesive tape on the back side of horn button cover, center the horn button cover on the center of the horn button and apply pressure to stick the cover. (See Figure 9)



Figure 9

Step 13:

Your installation is now complete and you can enjoy your new Corso Feroce Steering Wheel.

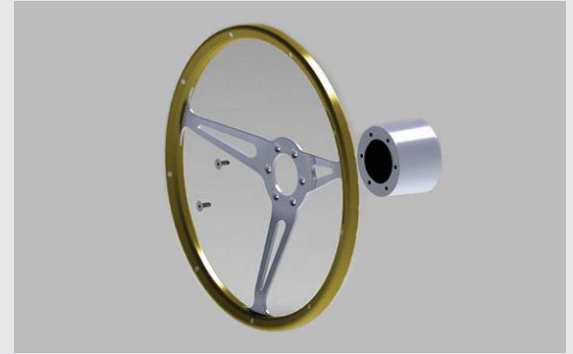


Figure 5



Figure 6

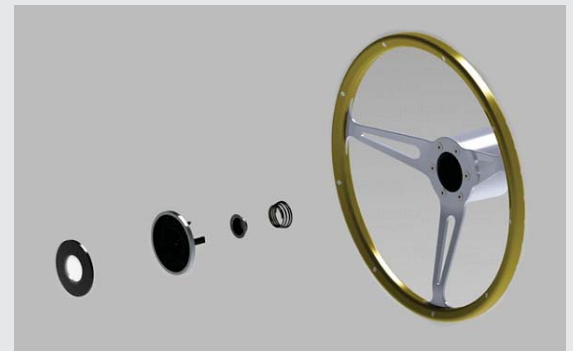


Figure 7



Figure 8