



MAGICMOUNT

LOW-PROFILE DASH MOUNT
FOR MOBILE DEVICES

**MAGDM/
MAGDMI**

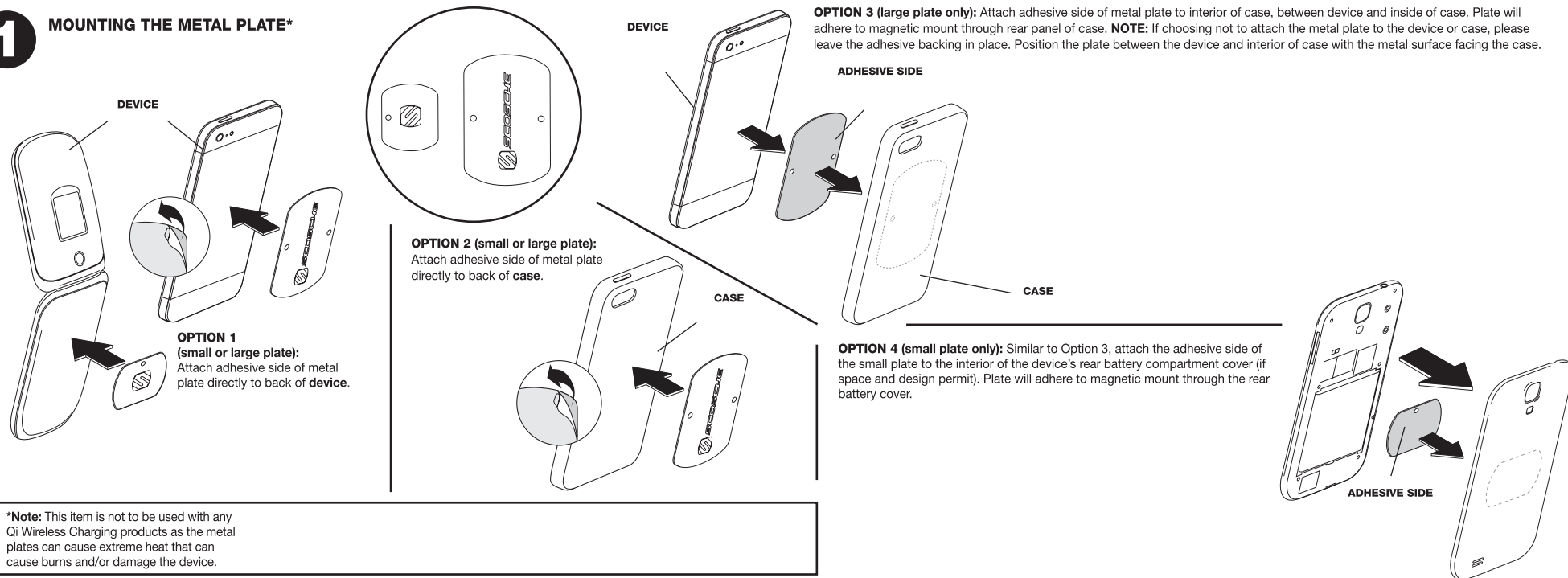
PARTS INCLUDED

- (1) Low-profile magnetic mount
- (1) Small metal plate
- (1) Large metal plate

READ INSTRUCTIONS COMPLETELY BEFORE INSTALLING THIS MOUNT KIT.

WARNING: Use caution whenever removing or handling plastic parts of any vehicle. Unnecessary force or pressure can cause pieces to crack or break. Please use a plastic card to remove the metal plates. Remove adhesive residue with a non-abrasive cleaner.

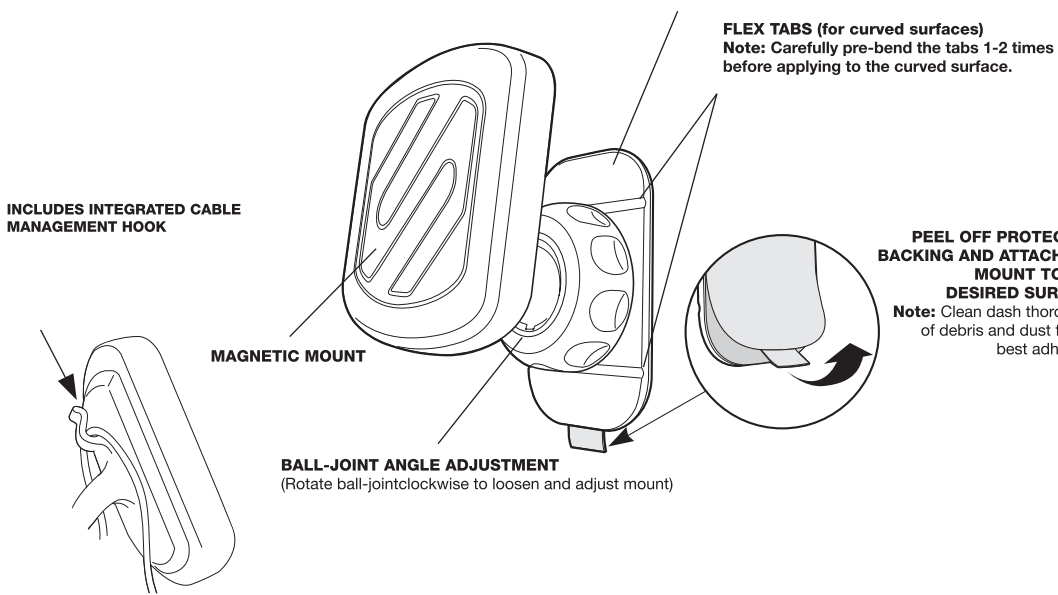
1 MOUNTING THE METAL PLATE*



2 PLACE LOW-PROFILE MOUNT

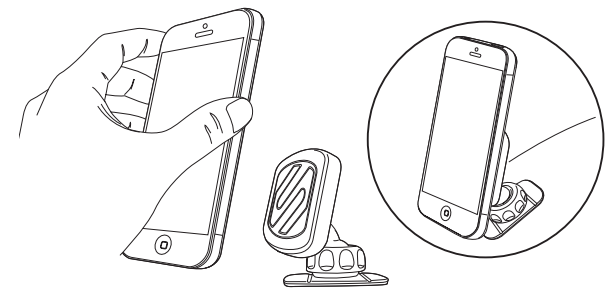
CAUTION: This magnetic mount is not a toy. The small magnets are harmful if swallowed. Keep away from children.

DASH MOUNT
(Rotates 90° for placement on horizontal surfaces)



3

ATTACH DEVICE TO MAGNETIC MOUNT



4

REMOVING ADHESIVE MOUNTING PARTS (DASH MOUNT & METAL PLATE)

Use a thin plastic card to carefully lift the magnetic mount or metal plate from the mounting surface. Slowly lift up and remove the mount or metal plate.

