



SCOSCHE

MAGICMOUNT™ POWER HUB
MAGPCUP

**MAGNETIC CUP-HOLDER MOUNT & POWER HUB
FOR MOBILE DEVICES**

READ INSTRUCTIONS COMPLETELY BEFORE INSTALLING THIS MOUNT KIT.

WARNING: Do not use the magnetic mount with any hard-drive based devices such as: iPod classic, iPod video and Zune MP3 players. Use caution whenever removing or handling plastic parts of any vehicle. Unnecessary force or pressure can cause pieces to crack or break. Please use a plastic card to remove the metal plates. Remove adhesive residue with a non-abrasive cleaner.

AIRBAG WARNING: Do not place this mount, or any other object, on or near the airbag. In the event of deployment, objects placed on or near airbag could cause serious injury.

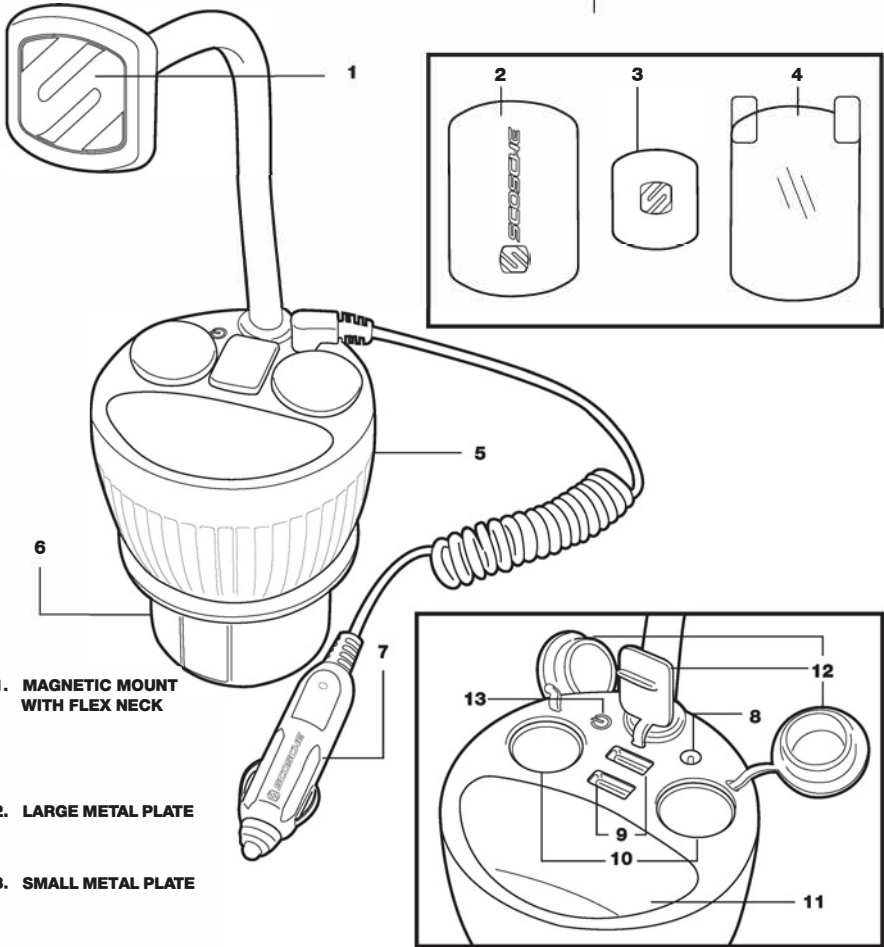
Caution: This magnetic mount is not a toy. The small magnets are harmful if swallowed. Keep away from children.

PARTS INCLUDED

- (1) Magnetic mount & cup holder power hub
- (1) 12V Power Adapter
- (1) Large metal plate
- (1) Small metal plate
- (1) Protective film sticker
- (1) Cleaning wipe

SPECIFICATIONS

Input: 9-16V, 2A
 Dual 12V Sockets
 USB Output: 5V 2.4A, 1A



1. MAGNETIC MOUNT WITH FLEX NECK

2. LARGE METAL PLATE

3. SMALL METAL PLATE

4. PROTECTIVE FILM STICKER

5. POWER HUB

6. CUP HOLDER BASE

7. 12V POWER ADAPTER

8. 12V POWER ADAPTER PORT

11. STORAGE COMPARTMENT

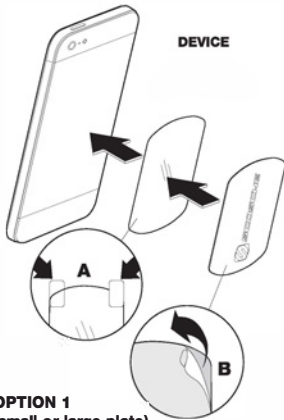
12. PORT COVERS

9. DUAL USB CHARGE PORTS

13. LED POWER INDICATOR

10. DUAL 12V POWER SOCKETS

MOUNTING THE MAGICPLATE™

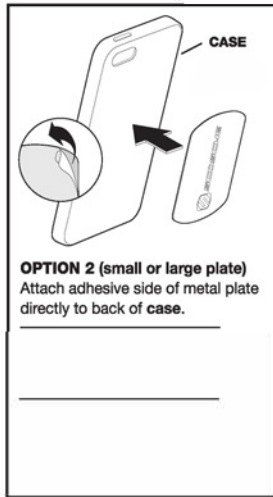


OPTION 1 (small or large plate)

1. Remove the backing from the protective film as shown on the removal tabs, and place on the **device** (A).

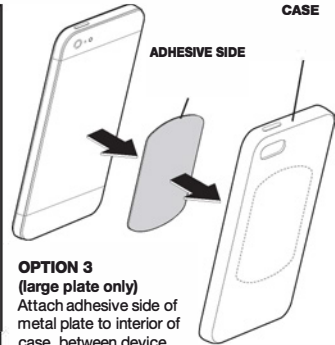
Note: The protective film is optional. Only use the film if mounting the plate directly to the device.

2. Remove the adhesive backing from the metal plate and attach the plate to the protective film on the device (B).



OPTION 2 (small or large plate)

Attach adhesive side of metal plate directly to back of case.



OPTION 3 (large plate only)

Attach adhesive side of metal plate to interior of case, between device and inside of case. Plate will adhere to magnetic mount through rear panel of case.
NOTE: If choosing not to attach the metal plate to the device or case, please leave the adhesive backing in place. Position the plate between the device and interior of case with the metal surface facing the case.

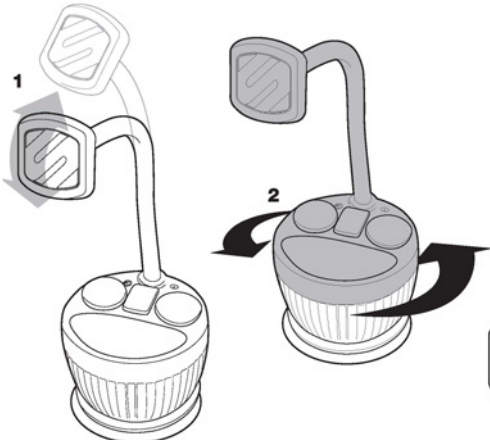
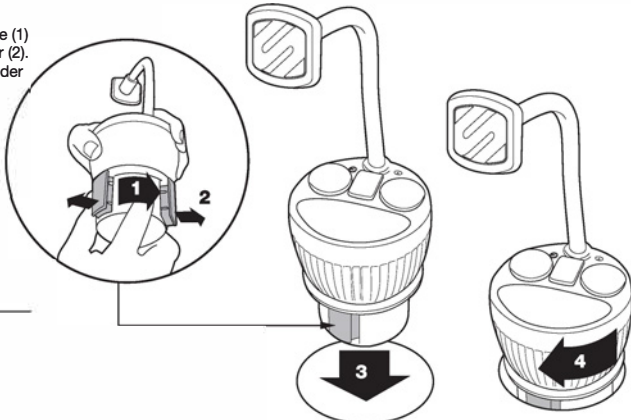


REMOVING THE METAL PLATE

Use a thin plastic card to carefully lift the plates adhesive surface from the mounting surface. Slowly lift up and remove the plate. Do not use any heat or liquids to remove the plate, due to risk of damaging your phone.

INSTALLING THE MAGNETIC MOUNT

Rotate the bottom of the mounting base (1) to expand the base to fit the cup holder (2). Place the mounting base in the cup holder (3), and gently rotate the power hub as needed to secure the base in the cup holder (4).



Adjust the angle of the magnetic mount by bending the flexible neck (1). Swivel the top portion of the power hub (shown in gray) to rotate the neck 360° (2).

Use the included 12V power adapter to connect the mount to your vehicle's 12V AUX or cigarette lighter socket (1). The LED on the mount will illuminate, indicating the two 12V sockets and two USB ports are ready for use. Place your device on the magnetic mount (2).

