



MAGICMOUNT MAT MAGMAT

MAGNETIC MOUNT FOR GPS DEVICES

READ INSTRUCTIONS COMPLETELY BEFORE INSTALLING THIS MOUNT KIT.

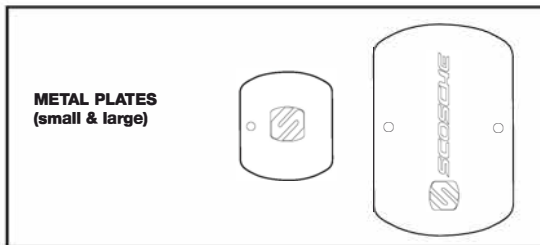
WARNING: Do not use the magnetic mount with any hard-drive based devices such as: iPod classic, iPod video and Zune MP3 players. Use caution whenever removing or handling plastic parts of any vehicle. Unnecessary force or pressure can cause pieces to crack or break. Please use a plastic card to remove the metal plates. Remove adhesive residue with a non-abrasive cleaner.

PARTS INCLUDED

- (1) Magnetic mount with weighted dashboard mat
- (1) Small metal plate
- (1) Large metal plate

LES PIÈCES COMPRENNENT

- (1) Support magnétique avec



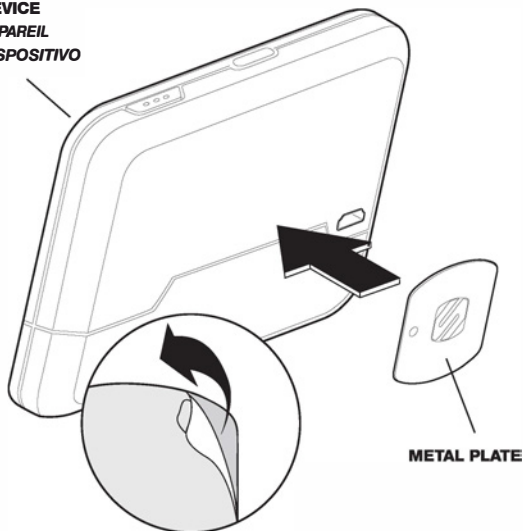
DEVICE
APPAREIL
DISPOSITIVO

1

MOUNTING THE METAL PLATE*

Use small or large plate depending on size and shape of device. Attach adhesive side of metal plate directly to back of device.

***CAUTION:** This item is not to be used with any Qi Wireless Charging products as the metal plates can cause extreme heat that can cause burns and/or damage the device.



REMOVING THE METAL PLATE

Use a thin plastic card to carefully lift the plates's adhesive surface from the mounting surface. Slowly lift up and remove the plate.

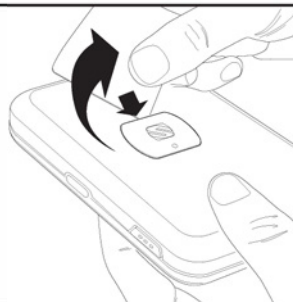
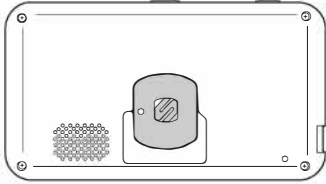


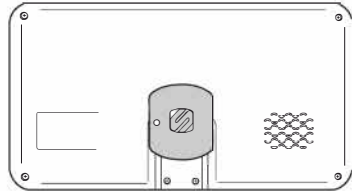
PLATE PLACEMENT FOR GPS DEVICES

See shaded areas for ideal plate placement on the following GPS devices.

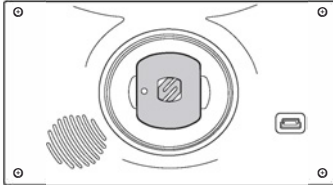
Magellan RoadMate 2230T-LM, 5230T-LM



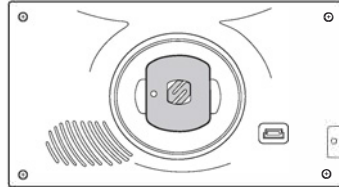
Magellan RoadMate 9250T-LMB



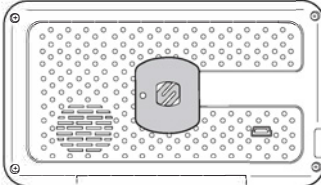
**Garmin Nüvi
2457LMT, 2557LMT, 2597LMT, 42LM**



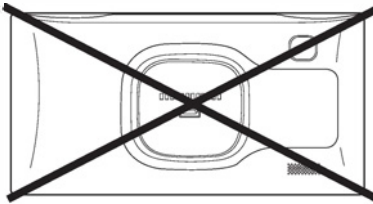
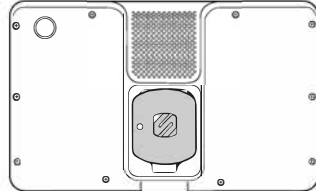
Garmin Nüvi 52LM



Garmin Nüvi 50LM

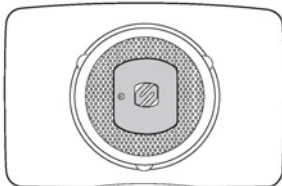


Garmin Nüvi 2797LMT 7" (17,8 cm)

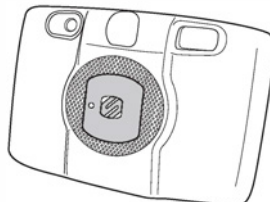


**Garmin Nüvi 3597LMTHD
(NOT RECOMMENDED)**

TomTom START 50, 50M



TomTom VIA 1500TM, 1605TM



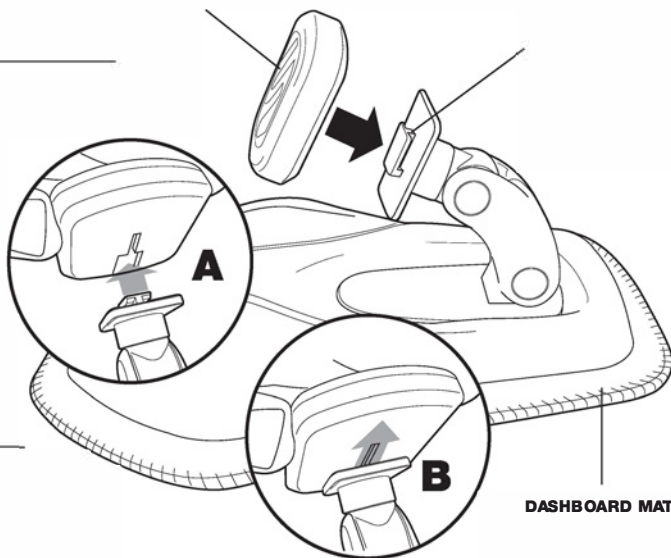
2

MAGNETIC MOUNT WITH WEIGHTED DASHBOARD MAT

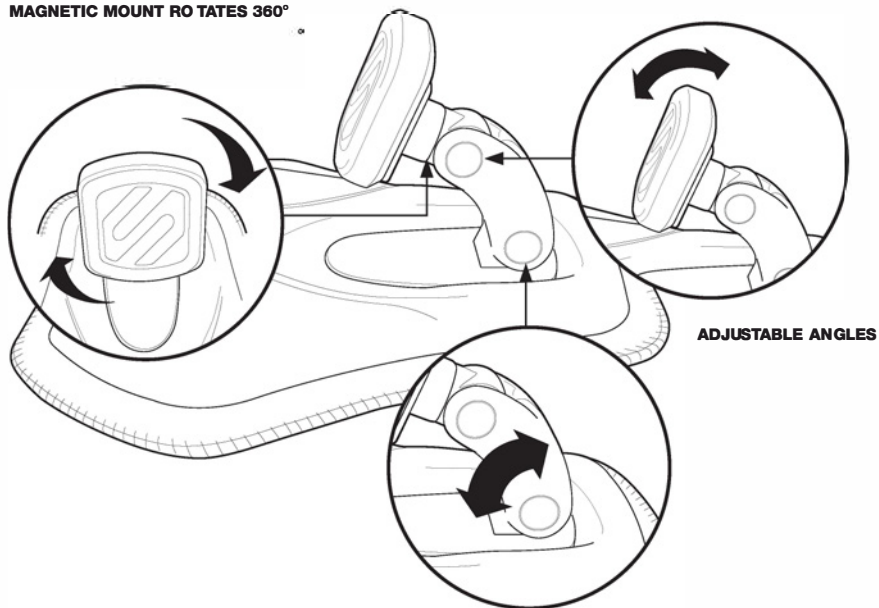
MAGNETIC MOUNT - Caution: This magnetic mount is not a toy. The small magnets are harmful if swallowed. Keep away from children.

T-NOTCH HITCH

Insert T-notch hitch into the T-notch opening on back of magnetic mount (A). Slide T-notch forward and up into the slot to lock the mounting plate in place (B).



MAGNETIC MOUNT ROTATES 360°



3

PLACE MAT ON DASHBOARD AND ATTACH DEVICE TO MAGNETIC MOUNT

