



SARIS

Glide EX

774 | 774BLU | 774BRZ | 775

TELL US WHAT YOU THINK



REGISTER YOUR PRODUCT FOR UPDATES



LONG FOR THE RIDE

Just as no garage is complete without a bicycle, at Saris, we believe no car is complete without a bike rack.

Since setting off on this journey nearly 30 years ago, Saris racks have freed millions of bike-lovers to explore new territory and terrain, take part in group rides, bike pool to races, and commute to and from work.

And we continue to do so in style.

As the all-time #1 best-selling bike rack, Saris Bones® continues to set the standard for excellence in design. Today all Saris bicycle racks are intuitive to load and secure, and guaranteed for life.

Built by cyclists for cyclists in Madison, Wisconsin, we strive to create the world's best bike racks.

Because cycling is what we live for.

MADE IN WISCONSIN



Specifications: GLIDE EX



For use with receiver hitches Class II or higher. 5-bike model designed for 2" Class II or higher.



Max = 35 lbs/kg 16

4
BIKE

Max = 140 lbs/63.5kg

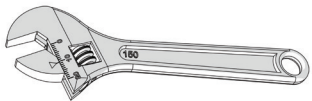


Max = 30 lbs/kg 13.5

5
BIKE

Max = 150 lbs/68 kg

Tools Needed:

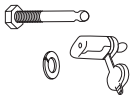


Adjustable or 3/4" Wrench



5mm Hex Key

Items Included:



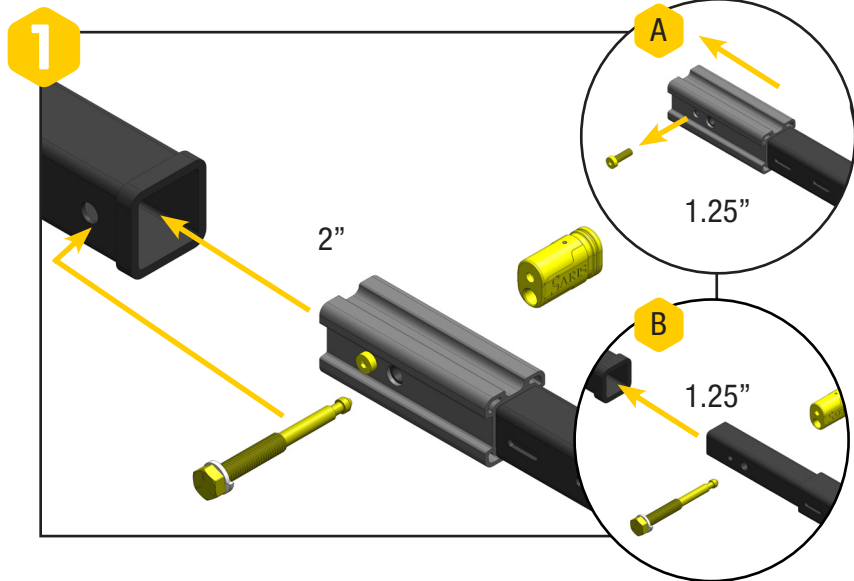
x 2

Optional Accessories:



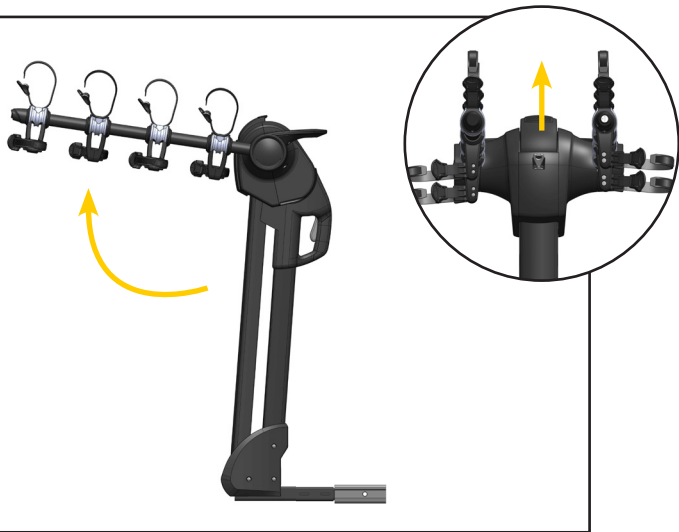
3040 – Bike Beam

INSTALL RACK



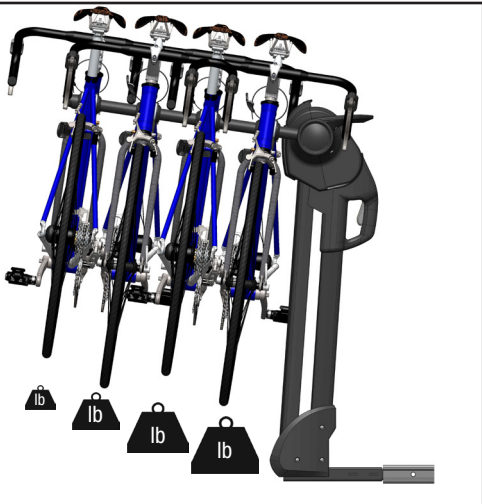
EN Install receiver tube into hitch. Hitch pin should enter in on the driver's side. Tighten hitch pin with wrench. Secure with lock. Note: If your receiver is 1.25" remove the adapter block as shown (A/B). Tools Required: 3/4" Wrench, 5mm Hex Key (to remove adapter block). 2" adapter on 5-bike model is not removable.

2



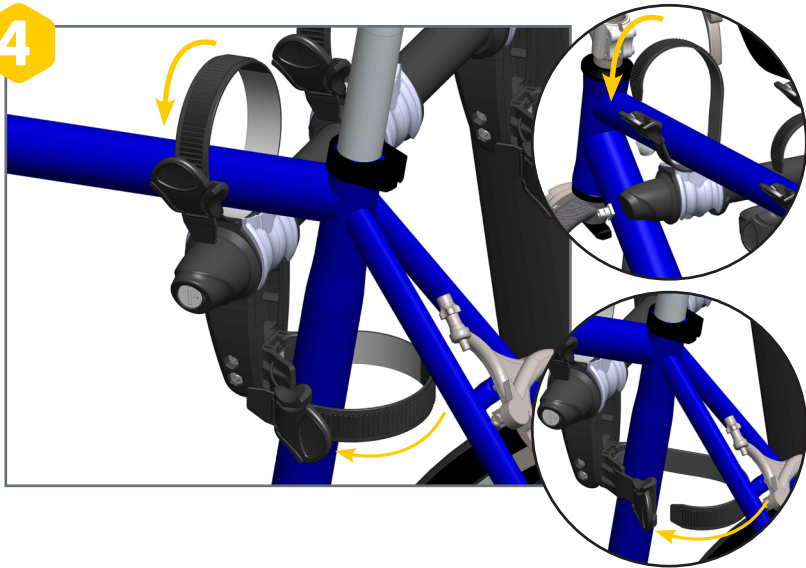
EN Raise rack arms up by lifting the lever at the top of the rack, then rotate arms up. You will hear an audible click when the arms are in locked position.

3



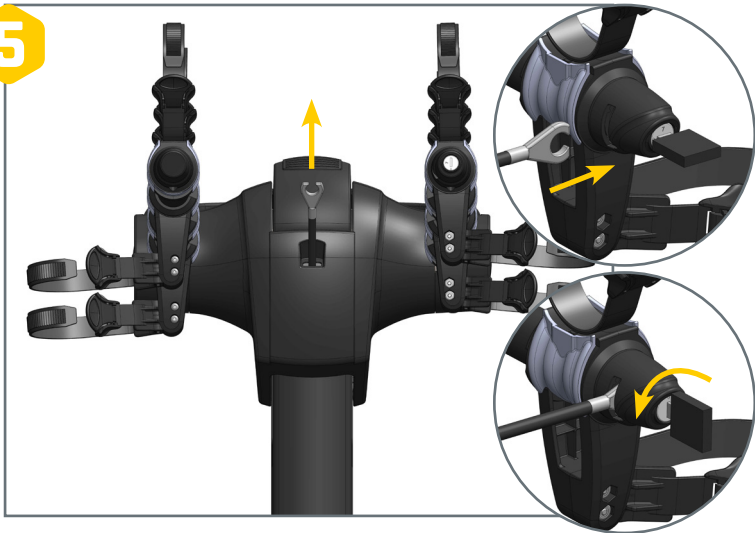
EN Load bikes, heaviest to lightest, with heaviest bikes closest to car. The rear of each bike should be on the same side as the anti-sway strap that hangs below the rack arm. Load bikes on the arms alternating directions.

4



EN Insert straps through buckles and pull tightly around bike frame. The top straps secure the top tube of bicycle. The anti-sway straps that hang below the rack arms secure the bike's vertical seat tube.

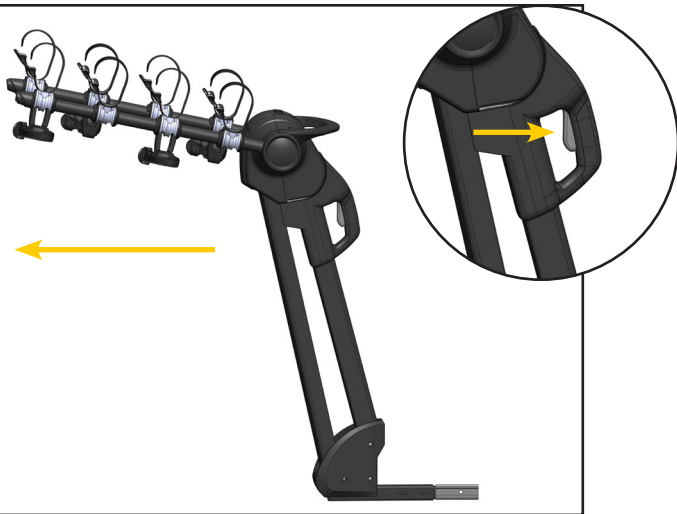
5



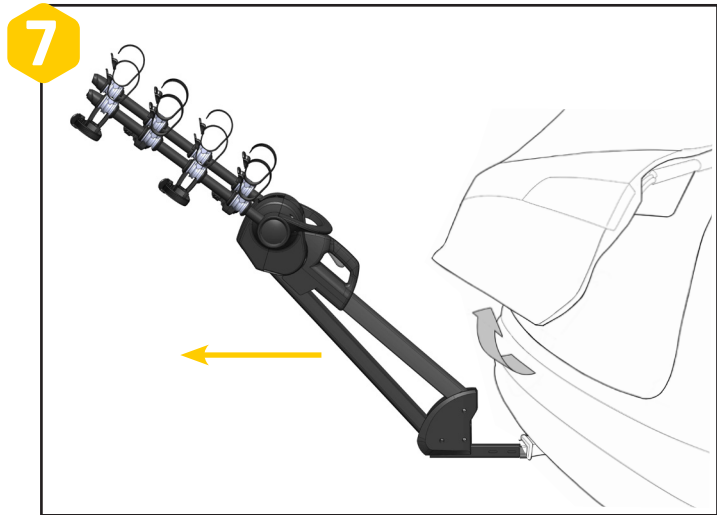
EN To lock bikes with integrated lock, pull cable lock out of housing, loop over top of bikes and insert cable into end of right arm. Turn key to lock.

HATCH ACCESS

6

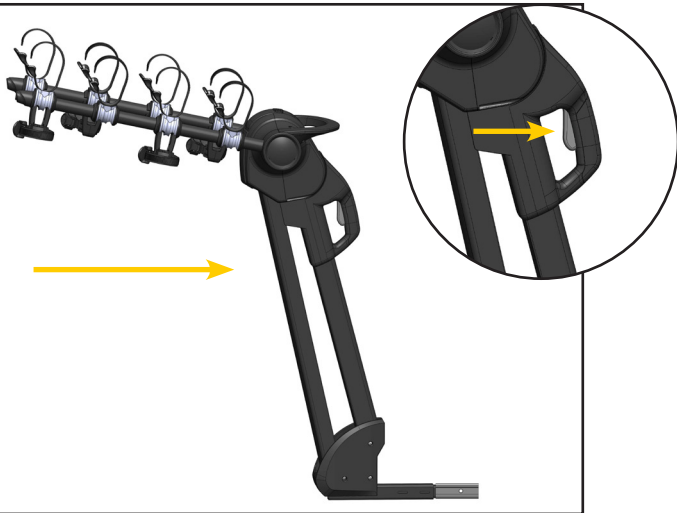


EN While standing between the rack and vehicle, hold handle on back of rack and press trigger to push rack away from vehicle. Rack can be extended with or without bikes installed.



EN Access hatch.
*Arms cannot be articulated in extended position.

8



EN To bring rack back to transport position, pull back on handle until an audible click is heard.

*Do not operate vehicle while rack is tilted away from the vehicle.

EN Technical Specifications
4 Bike carrier weight: 37lb/ 17kg
Permitted load capacity: 140lb/ 63.5 kg
Max bike weight: 35 lb/16 kg

Technical Specifications
5 Bike carrier weight: 37lb/ 17kg
Permitted load capacity: 150lb/ 68 kg
Max bike weight: 30 lb/13.5 kg

CAUTIONS:

- All requirements for compatibility/fit as stated in the current Saris vehicle/carrier compatibility guide must be followed.
- Read and follow instructions carefully. Save owner's manual for future reference or parts information. Ensure that any other users of the bicycle carrier are familiar with its content.
- Allow a minimum distance of 12" between the ground and the bottom of a hanging bike tire.
- Drive slowly over speed bumps, 5 to 10 mph max speed.
- It's the end user's responsibility to ensure that use of this product meets all local and state laws.
- When cleaning vehicle and rack, use only water soluble cleaners. Do not take rack through car wash.
- Make sure bike tires are not directly behind exhaust pipe.
- Rack must be installed directly into vehicle hitch receiver. Do not modify the hitch receiver or use hitch extenders.
- Do not mount to any type of trailer or RV including Class B vehicles.
- Prior to usage on the road, remove all loose parts from bicycle, including (but not limited to) child seat, basket, lock, light, pump, etc.
- This carrier is not recommended for off-road use or for use at speed exceeding 70 mph (113 km/h).
- The handling characteristics of a vehicle will change when a rear bicycle carrier is fitted and especially when it is loaded (in particular, crosswind sensitivity, handling on bends and braking). Driving techniques should be altered to allow for these changes: reduce speed, especially on bends and allow for longer braking distances.
- The vehicle's total length increases when the bike carrier is attached. The bikes themselves may increase the vehicle's total width and height. Take care when reversing and/or entering garages or ferries, etc.
- Remove carrier from vehicle when not in use.

- This carrier is constructed to carry standard bike frames. It is not intended for use with tandem or recumbent bicycles.
- Replace any mounting strap at the first sign of wear. Replacement parts are available through your local Saris dealer.
- Tighten straps regularly during the journey.
- Vehicle should be in good condition in the area at which the hitch is located.
- Do not exceed maximum load capacity of carrier! Secure properly and adjust for even load distribution, loading the heaviest/biggest bike first and closest to the vehicle.
- Saris absolves itself of responsibility for any personal injuries or consequential damage to property or wealth caused by incorrect fitting or use.

Warning and Disclaimer:

This carrier has been designed to carry bicycles on specific vehicles. Before installation, user must read and follow current Saris Fit Guide (available through Saris dealer) recommendations and enclosed instructions. Fit recommendations are based on vehicle's standard features; optional features may affect the fit recommendations. User must attach carrier correctly to the vehicle, check its attachment before each use, and inspect carrier parts for wear. Carrier's attachment to the vehicle is critical and beyond the control of the manufacturer. Manufacturer and seller expressly disclaim any and all liability for personal injury, property damage or loss, whether direct, indirect, or incidental, resulting from the incorrect attachment, improper use, inadequate maintenance, or neglect of this carrier.

Note: No damage to mounting surfaces is covered.

Any product or part thereof found to be defective within the term as set forth above will be replaced without charge provided that: (1) its failure resulted from a defect in material or workmanship and not from normal wear and tear expected in the use of the product; (2) the product was not misused, improperly assembled, improperly maintained or damaged by accident; (3) there was no failure to follow instructions or warnings in Owner's Manual; (4) no alterations or modifications were made; and (5) the product or part is delivered, freight prepaid, to Saris Cycling Group or an authorized service center. Please call to obtain return authorization prior to return. SCG reserves the right to inspect any product before issuing a replacement. SCG's only obligation shall be to replace such products or parts that it determines are defective.

LIMITATIONS

The foregoing warranties are in lieu of and exclude all other warranties not expressly set forth herein, whether expressed or implied by operation of law or otherwise. Other than as set forth above, SCG makes no warranty, whether express, implied or statutory, with respect to any product, including, but not limited to, warranties of reliability, merchantability fitness for a particular purpose, or those arising from any course of performance, dealing, usage or trade. SCG shall not be liable for incidental or consequential losses, damages or expenses in connection with its products. SCG's liability hereunder is expressly limited to the replacement of goods not complying with this warranty, at SCG's election, to the repayment of an amount of the purchase price of the product in question. Some states do not permit the exclusion or limitation of implied warranties or incidental or consequential damages, so the preceding limitations and exclusions may not apply to you.

EXCLUSIONS

- If consumer does not heed cautions listed in Instruction Manual, damage is not covered under warranty
- Impact/collision damage is not covered under warranty
- Cradles and strap damage due to improper arm placement are not covered under warranty
- Carrying anything other than a bicycle is not covered under warranty
- Rust is wear and tear and is preventable with rack maintenance
- Weather impact (UV, salt air/water)

RECOMMENDED RACK MAINTENANCE

Each use:

- Wipe down trunk rack feet
- Check straps for signs of wear
- Check bike cradles and wheel scoops
- Check for loose bolts

Every 90 days actions

- Clean with water and mild soap
- Lubricate locks if applicable (use wet, oil based lubricant; NO WD-40)
- Grease hitch bolt threads
- Check for scratches in paint

Lifetime warranty available in North America only.

Contact Us for more information.