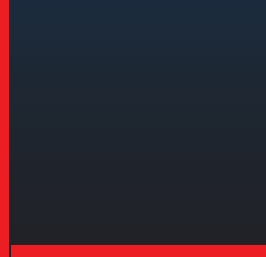


SAFECRAFT **SAFETY EQUIPMENT**

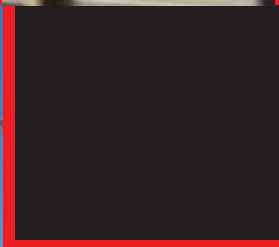
Fire Suppression Systems



MOTORSPORTS



MARINE



CUSTOM STREET



AVIATION





Fire Suppression System for ALL Dirt Late Model Vehicles

Safecraft is the largest manufacturer of motorsport fire suppression systems in the United States.

- **Most trusted name in motorsports for over 20 years**
- **Systems installed in over 25,000 NASCAR, NHRA, SCCA Off-Road and NASA vehicles**
- **Where SAFETY is a tremendous concern, car builders and NASCAR choose and count on Safecraft**
- **Safecraft systems use a superior 3M™ Novec™ 1230 Fire Protection Fluid, both effective and leaves no residue**
- **All hardware kits engineered for our customers' quick and easy installation**
- **Strategically placed spray nozzle designed for complete and total defense**

Trust and select the quality of **Safecraft** for all your fire suppression needs.

Safecraft Offers 2 Types of Deployment Systems:

- ✓ Automatic
- ✓ Manual /Automatic

10 lb Automatically Activated System

Designed to provide automatic suppression capability to the driver and fuel cell areas. (Optional coverage for engine compartment available). An easy-to-install kit has flexible sensor lines that provides coverage to important areas. Safecraft's proven thermal sensor provides state-of-the-art protection without driver activation — heat automatically activates the sensor to trigger strategically placed nozzles.

- ✓ Thermally-Activated Automatic Fire Suppression System
- ✓ 10 lb Dual Head
- ✓ 3M™ Novec™ 1230 Fire Protection Fluid
- ✓ SFI-Certified

Complies with 2017 Unified Dirt Late Model Series Specs

10 lb Automatic/Manually Activated System

Automatic AND Manual protection; the best of both worlds. All the features of the automatic and manual system providing complete vehicle protection.



Model RS



The Model RS is the benchmark in the industry, with options and features not found on any other motorsports fire suppression system.

Features

- 5 Way Swivel Head
- 3 Discharge Outlets
- 5 & 10 Pound Sizes

Options

- Polished Cylinder
- SFI 17.1 Certification
- Halon, FE36

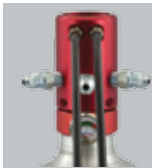
Activation Type



Pull Cable



Push Knob



Dual Pull Cable



Pneumatic



Push Cable



Model LT



Many racing teams favor this lightweight extinguisher system. With the unique Safecraft swivel head and slim profile, the Model LT is easy to install.

Features

- Lightweight
- Dual Discharge Outlets
- 3, 5 & 10 Pound Sizes

Options

- Polished Cylinder
- SFI 17.1 Certification
- Halon, FE36

Activation Type



Pull Cable



Push Knob



Pneumatic



Push Cable



Model LD



The Model LD has all the features and options of the Model LT but is fitted with a special dual pull cable head.





Model AT



Safecraft's Model AT family of extinguishers are used in motorsports, marine, and several industrial applications. These units feature a fast acting thermal sensor either directly on the extinguisher or remotely so the cylinder can be mounted away from the area to be protected.

Model AT - Lightweight



With the motorsports market in mind, Safecraft has improved on the standard Model AT10 with a lighter weight version. Using a special cylinder, redesigned head and sensor we have saved about 1 pound in weight.

Model AT - Isolation Valve

This Model AT allows the user to completely install all of the plumbing and sensors, then install and turn on the extinguisher. The extinguisher can be removed and replaced.

Model AT - Industrial

Used on a variety of industrial applications such as CNC machine cabinets, flammable storage lockers, conveyors and many other applications. Capable of interrupting electrical circuits for automatic shut downs.

Model PB & PC Removable Extinguisher Systems

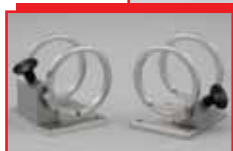
These models of extinguishers allow you to fight fires in or out of your vehicle. They have a unique attractiveness that encourages locating them in the open rather than hiding them in your trunk.

Features

- Halon 1211
- 2.5 Pound size
- All Metal Strap Bracket

Options

- Red, White, Black and Wrinkle Black Aluminum Cylinders
- Polished Stainless Cylinder
- Machined Billet Bracket



INSTALLED FIRE EXTINGUISHER SYSTEM DIMENSIONS AND WEIGHTS

MODEL NUMBER	AGENT TYPE	AGENT QTY.	CYLINDER TYPE	OVERALL LENGTH	CYLINDER DIAMETER	NOMINAL WEIGHT (lbs.)
AT3	Halon / FE36	3 Lbs.	White Alum.	14.4	3.2	4.5
AT5	Halon / FE36	5 Lbs.	White Alum.	16.9	3.5	7.0
AT10	Halon / FE36	10 Lbs.	White Alum.	16.0	5.2	15.0
AT10HEH	Halon / FE36	10 Lbs.	White Alum.	16.8	5.2	14.0
LT3	Halon / FE36	3 Lbs.	White Alum.	15.4	3.2	4.5
LT5	Halon / FE36	5 Lbs.	White Alum.	15.8	4.0	7.1
LT10	Halon / FE36	10 Lbs.	White Alum.	17.8	5.2	15.1
RS5	Halon	5 Lbs.	Brushed Alum.	13.8	4.4	8.7
RS5H	FE36	5 Lbs.	White Alum.	16.5	4.0	7.5
RS10	Halon / FE36	10 Lbs.	Brushed Alum.	19.0	5.2	16.5