

Model LT Installation Guidelines

DO NOT remove the looped safety pin in the **extinguisher** head until the pull cable is installed. The extinguisher will discharge if the pin is removed prior to inserting the activation cable.

Cylinder Mounting

We recommend that the extinguisher be mounted horizontally, cross wise in the vehicle, or vertically with the head up. Observe temperature limits on label. Mount so you can see the gauge and label. Tech inspectors like to verify the gauge readings and service info from the label.

Discharge Head

The Model LT extinguisher has a unique design that allows the cylinder to be positioned and then the top of the discharge head rotated for the pull cable hook-up, or push knob location. To rotate the head, loosen the set screw at the perimeter of the discharge head – rotate it to the desired position – **tighten the set screw**. The head may be a little tight when rotated – this is normal. The discharge ports on the Model LT do not rotate. The extinguisher comes with 1 or 2 outlets (#4 flare fitting) installed in the head. The 2nd port may be plugged. To use the 2nd port remove the plug and install the supplied fitting.

Pull Cable Activation – see picture on next page

The safety pin or the pull cable is used to keep the spring loaded plunger in the “cocked” position. **Either of these must be in place or the extinguisher will discharge!!** The hole in which the inner cable passes through is close tolerance, so the inner cable can be a little hard to get through. To install the pull cable we suggest a **minimum** 12 inch bend radius for the cable. If you use the cable as supplied, sand or file the end of the inner cable to a smooth blunt end before inserting it through the head. If you need to shorten the cable, remove the inner cable from the outer cable conduit. Install the outer cable and secure it. It can be cut with a pair of heavy wire cutters, then insure that the inner cable run through it smoothly. Install the inner cable all the way through the conduit and let it pass through the head of the extinguisher. We suggest that the inner cable **NOT** extend out of the head more than **1/2 inch**. Ensure that the cut end is free from burrs. We suggest that you sand or file a smooth blunt end on the inner cable.

After the pull cable is installed you can remove the safety pin. The safety pin must be removed for the extinguisher to activate

Push Knob Activation – see picture on next page

If you purchased a push knob activation extinguisher, we suggest you mount the extinguisher within easy reach of the driver. The safety pin is installed in the knob shaft and must be removed to activate the extinguisher. **Ensure that the set screw on the side of the discharge head is tight after you set the location of the push knob**

Discharge Line and Nozzles

Some kits are supplied with 10 ft. of ¼ inch aluminum or steel tubing. Do not crimp the tubing when routing, use a tube bender. Slide the flare nuts and ferrules onto the lines before flaring the tube. A single flare is all that is required. A normal flaring tool can be used, the type you can get at any hardware store. The fittings have a 37 degree AN type of flare. The spray nozzles provide about a 120 degree spray pattern, both vertically and horizontally. Mount in the desired location to provide an unobstructed spray to the desired location. **DO NOT** use any other brand of spray nozzles with Safecraft extinguisher systems. If your kit came with blue and red nozzles, use the **blue nozzle for the driver** and the **red nozzles for the engine and or fuel cell**. Otherwise use the red nozzles for all locations.



Model LT3



Model LT5

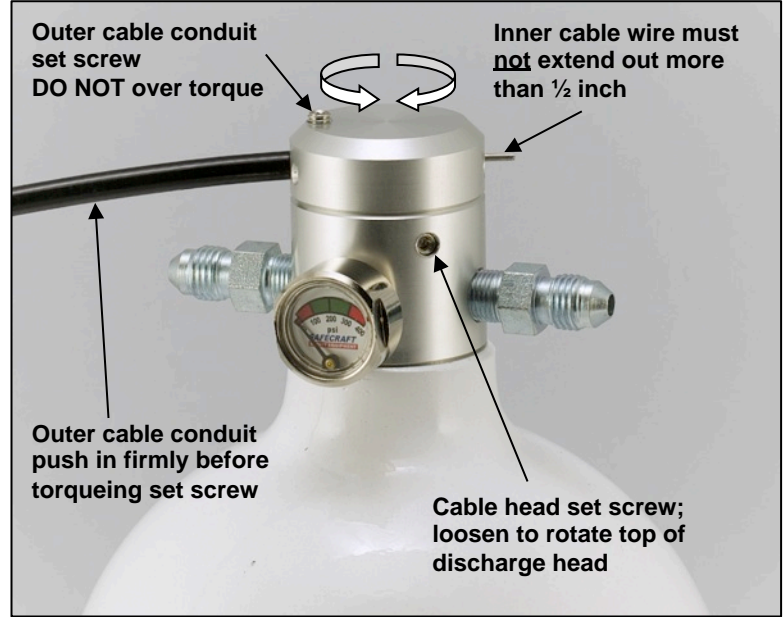
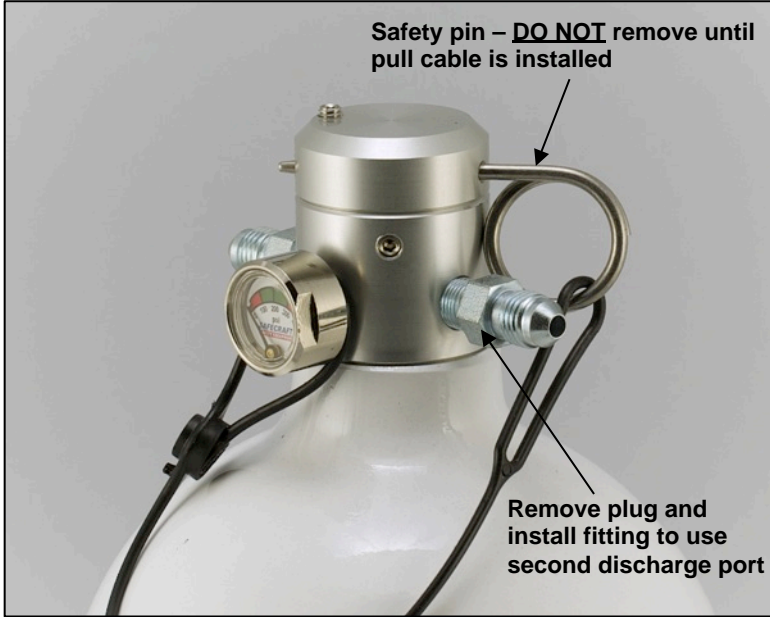


Model LT10

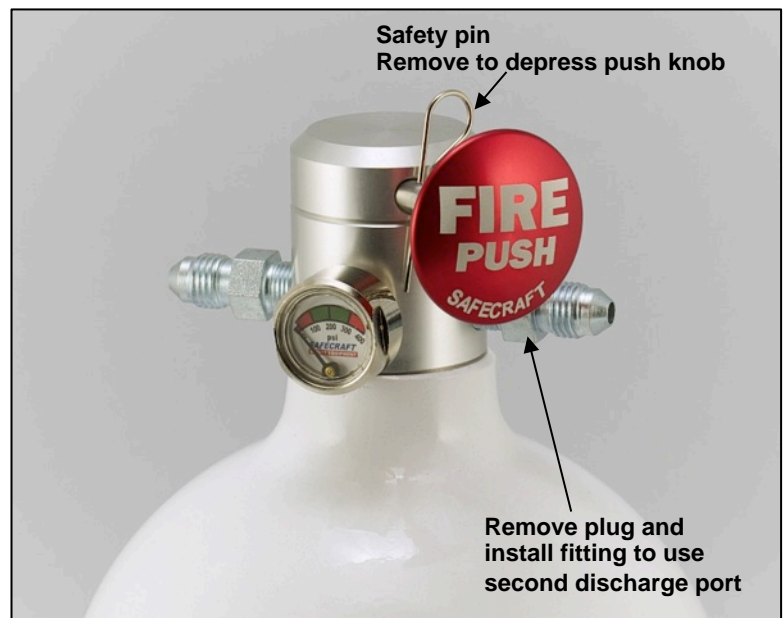
Model LT

Installation Guidelines

Model LT – Pull Cable



Model LT – Push Knob



Model LT For Material Handling Vehicles Installation Guidelines

DO NOT remove the looped safety pin in the extinguisher head until the pull cable is installed. The extinguisher will discharge if the pin is removed prior to inserting the activation cable.

Cylinder Mounting

The Model LT for Material Handling Vehicles is similar to the Model LT systems used in several automotive racing applications, with the exception that it is designed to be mounted in the inverted position. Typical applications include fork lifts, material transport equipment, and waste disposal vehicles.

Discharge Head

The Model LT extinguisher has a unique design that allows the cylinder to be positioned and then the top of the discharge head rotated for the pull cable hook-up, or push knob location. To rotate the head, loosen the set screw at the perimeter of the discharge head – rotate it to the desired position – **tighten the set screw**. The head may be a little tight when rotated – this is normal. The discharge ports on the Model LT do not rotate. The extinguisher comes with 1 or 2 outlets (#4 flare fitting) installed in the head. The 2nd port may be plugged. To use the 2nd port remove the plug and install the supplied fitting.

Pull Cable Activation – see picture on next page

The safety pin or the pull cable is used to keep the spring loaded plunger in the “cocked” position. **Either of these must be in place or the extinguisher will discharge!!** The hole in which the inner cable passes through is close tolerance, so the inner cable can be a little hard to get through. To install the pull cable we suggest a **minimum 12 inch bend radius** for the cable. If you use the cable as supplied, sand or file the end of the inner cable to a smooth blunt end before inserting it through the head. If you need to shorten the cable, remove the inner cable from the outer cable conduit. Install the outer cable and secure it. It can be cut with a pair of heavy wire cutters, then insure that the inner cable run through it smoothly. Install the inner cable all the way through the conduit and let it pass through the head of the extinguisher. We suggest that the inner cable **NOT** extend out of the head more than **1/2 inch**. Ensure that the cut end is free from burrs. We suggest that you sand or file a smooth blunt end on the inner cable.

After the pull cable is installed you can remove the safety pin. The safety pin must be removed for the extinguisher to activate.

Push Knob Activation – see picture on next page

If you purchased a push knob activation extinguisher, we suggest you mount the extinguisher within easy reach of the driver. The safety pin is installed in the knob shaft and must be removed to activate the extinguisher. **Ensure that the set screw on the side of the discharge head is tight after you set the location of the push knob.**

Discharge Line and Nozzles

Some kits are supplied with 10 ft. of ¼ inch aluminum or steel tubing. Do not crimp the tubing when routing, use a tube bender. Slide the flare nuts and ferrules onto the lines before flaring the tube. A single flare is all that is required. A normal flaring tool can be used, the type you can get at any hardware store. The fittings have a 37 degree AN type of flare. The spray nozzles provide about a 120 degree spray pattern, both vertically and horizontally. Mount in the desired location to provide an unobstructed spray to the desired location. **DO NOT** use any other brand of spray nozzles with Safecraft extinguisher systems. If your kit came with blue and red nozzles, use the **blue nozzle for the driver** and the **red nozzles for the engine and or fuel cell**. Otherwise use the red nozzles for all locations.

Extinguishers with Novec 1230 extinguishing agent use the same nozzles for all locations.

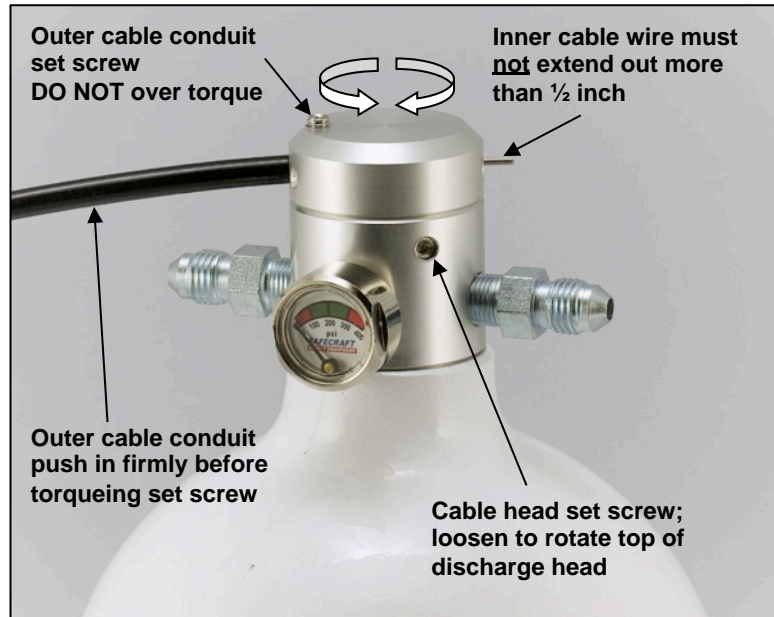


SAFECRAFT
SAFETY EQUIPMENT

Model LT - Pull / Push

Installation Guidelines

Model LT - Pull Cable



Model LT - Push Knob

