



**RUST
BUSTER**
FRAMEWORKS

RB4011R

**Jeep® TJ Wrangler
Front Control Arm Section - Passenger**



REQUIRED TOOLS

Jack Stands or Lift
Mig Welder
Paint/Primer
Locking Pliers
Hand Grinder
Cutting Wheel or Torch
Welding Gloves
Welding Hood/Shield
Ear & Eye Protection
Sockets & Ratchet
Fire Extinguisher
Large C-Clamps
Dead Blow Hammer
Body Clip Removal Tool

KIT CONTAINS

Front Control Arm Section - Passenger
M10 Hex Bolt
M14 Hex Bolt
M14 Nyloc Nut

QTY

1
1
1
1



RB4011R

Jeep® TJ Wrangler
Front Control Arm Section - Passenger

1) **PREPARING YOUR VEHICLE**

Begin by disconnecting your battery prior to starting your installation.

Inspect your vehicle for leaking fuel lines, fuel tank and engine components. If you have fuel leaks repair all leaks prior to starting your installation. If your fuel tank is near your welding area **remove your tank prior to welding.**

Remove all combustible items above the work area such as seats, carpets, padding, etc.

Keep all flammable materials away from the vehicle work area.

2) **PREPARING YOUR WORKSTATION**

Keep a fire extinguisher and water close by in the case of fire and make sure you always have a designated "Fire Watch" to assist during the cutting or welding phases.

Abide by all apprenticed welding safety standards and practices.

Always use appropriate welding eye protection, ear protection, and work and fire safety gloves during the installation and within the work area.



WARNING!

If you are unsure on how to perform the installation or how to operate any of the required tools listed above, it is **HIGHLY** advised that you enlist the work of a certified welder/installer.

Failure to follow proper safety precautions and instructions may result in serious injury. **The user assumes all liability when installing the product.**



RB4011R

Jeep® TJ Wrangler Front Control Arm Section - Passenger

3) PREPARING FOR YOUR INSTALL

Lift your vehicle.

Remove the front passenger wheel and set it out of the way.

Support your front axle using two jack stands for the passenger side and the pinion yoke to prevent axle roll.



Remove lower control arm bolt from frame side bracket using a 21mm socket and 21mm wrench.



Remove upper control arm bolt from frame side bracket using 15mm socket.



Remove both control arms from the brackets.

Remove back three clips holding the inner fender liner on, using a body clip removal tool. Fold the inner fender liner out of your way.

Remove the bolt that holds the brake line bracket to the frame using a T40 Torx bit socket.





RB4011R

Jeep® TJ Wrangler Front Control Arm Section - Passenger

While using a tape measure, measure 1.5 inches from the top of the frame rail. Mark along the top of the frame from the front body mount bracket to the frame hole using a paint marker.



Using a tape measure, measure in from the front body mount bracket 1.5 inches and make a mark using a paint marker.



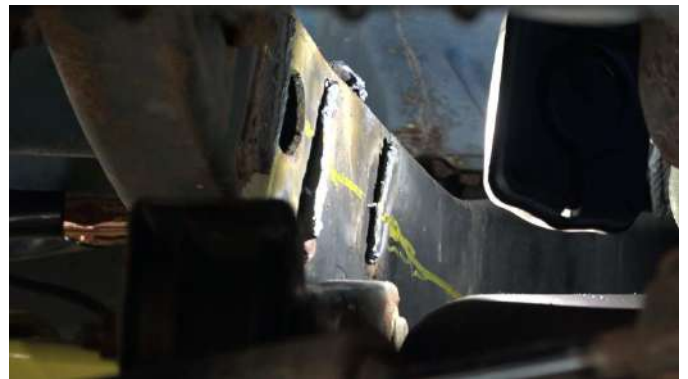
Repeat previous steps on inside of the frame rail once you cut away the upper control arm mount.



Depending on how you intend to cut, clean the cut zones free of rust and down to bare metal.

4) **CUT**

Begin cutting away the upper control arm mount from inside the frame rail.



Cut along the drawn lines.





RB4011R

Jeep® TJ Wrangler Front Control Arm Section - Passenger

5) TEST FIT PART

Attempt to push the part into place and over the frame rails. Take note of any difficulties and cut away any obstructions.



The part may fit snugly and require force. Ensure the frame rail is flush and the lower control arm bolt holes measure 57" +/- .5" from center of front bolt hole to center of rear bolt hole.



NOTE: If you have trouble getting the upper control arm bracket around the front exhaust section separate the front and rear exhaust sections to allow the front to flex.



NOTE: If other frame repair components have been installed previously, additional modifications to the frame may be required.

6) WELDING PREP

Once the part has been fitted, prepare your weld zones by clearing away any rust or debris, revealing bare metal.



(OPTIONAL): Coat the part with a weld-able primer or other rust inhibitor to help prevent or reduce the risk of rust formation.



RB4011R

Jeep® TJ Wrangler Front Control Arm Section - Passenger

Replace the part and C-clamp and tack weld it into place to prevent it from moving later.



7) WELD

Remove any remaining potential fire hazards on both the vehicle and surrounding area. Following proper welding procedures begin welding the part onto the frame rails.

100% weld around all edges.



8) PAINT AND PROTECT

If you chose not to protect your frame section in (Step 6), coat the part and work area with a primer or other rust inhibitor to help prevent or reduce the risk of rust formation.

9) REASSEMBLE VEHICLE

Begin reassembling your vehicle by starting with the lower control arm using a 22mm socket and 22mm wrench.



Reinstall upper control arm using 17mm socket.



Reinstall exhaust.

Reinstall your wheel.

Reconnect your battery.

Check out the collection of chassis frames and body we offer.